

92-05410
 92MR25 P1 1:52
 DIVISION OF REEDS

92-05410

FINAL PLAT FOWLER ADDITION

BEING A REPLATTING OF THE EAST ONE-HALF OF THE NORTHEAST ONE-QUARTER OF SECTION 16, TOWNSHIP 13 NORTH, RANGE 12 EAST OF THE SIXTH PRINCIPAL MERIDIAN, SARPY COUNTY, NEBRASKA.

SURVEYOR'S CERTIFICATE
 THIS IS TO CERTIFY THAT I HAVE ACCURATELY SURVEYED THE SUBDIVISION HEREIN, AND HAVE PLACED IRON PINS AT THE CORNERS OF EACH SECTION AS SHOWN ON THE PLAT. I HAVE ALSO PLACED IRON PINS AT THE CORNERS OF EACH SECTION AS SHOWN ON THE PLAT. I HAVE ALSO PLACED IRON PINS AT THE CORNERS OF EACH SECTION AS SHOWN ON THE PLAT. I HAVE ALSO PLACED IRON PINS AT THE CORNERS OF EACH SECTION AS SHOWN ON THE PLAT. I HAVE ALSO PLACED IRON PINS AT THE CORNERS OF EACH SECTION AS SHOWN ON THE PLAT.

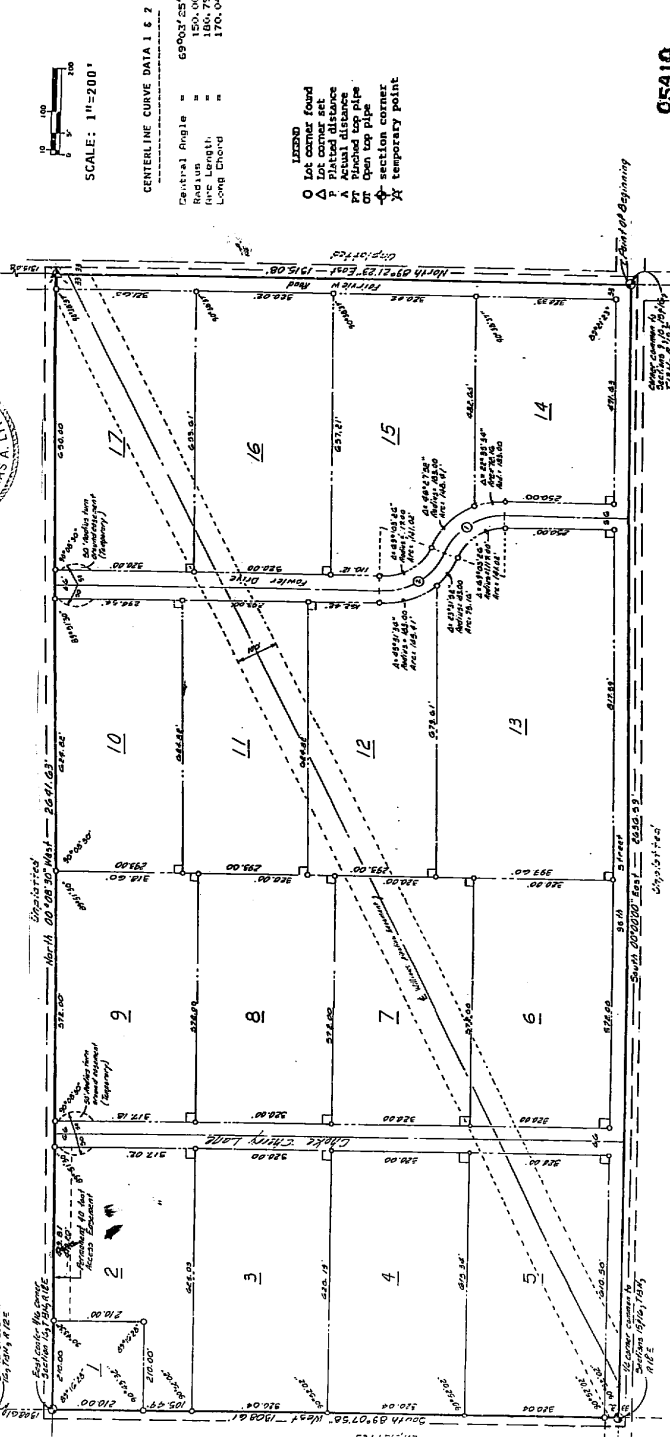
NOTARY PUBLIC
 I HEREBY APPROVE THIS PLAT OF FOWLER ADDITION (LOTS ONE THROUGH 17 INCLUSIVE) THROUGH 17 INCLUSIVE, THIS 15th DAY OF MARCH, 1992.

APPROVAL OF SARPY COUNTY PLANNING COMMISSION
 THIS PLAT OF FOWLER ADDITION (LOT ONE THROUGH 17 INCLUSIVE) HAS BEEN APPROVED BY THE PLANNING COMMISSION ON THE 15th DAY OF MARCH, 1992.



APPROVAL OF SARPY COUNTY SURVEYOR
 I HEREBY APPROVE THIS PLAT OF FOWLER ADDITION (LOTS ONE THROUGH 17 INCLUSIVE), THIS 15th DAY OF MARCH, 1992.

APPROVAL OF SARPY COUNTY TREASURER
 THIS IS TO CERTIFY THAT I FIND NO TAXES, DUE OR DELINQUENT, ARE SHOWN IN THE PLAT AS SHOWN BY THE RECORDS OF THIS OFFICE.



APPROVAL OF SARPY COUNTY BOARD OF COMMISSIONERS
 THIS PLAT OF FOWLER ADDITION (LOT ONE THROUGH 17 INCLUSIVE) HAS BEEN APPROVED BY THE SARPY COUNTY BOARD OF COMMISSIONERS ON THE 15th DAY OF MARCH, 1992.

05410

Revised 3/16/92