

THIRD AMENDMENT TO PROTECTIVE COVENANTS

WHEREAS, The Farm, Ltd., a Nebraska limited partnership, as the "Declarant", placed of record certain covenants, conditions, restrictions and easements on certain real property, which is more particularly described on Exhibit "A" attached hereto and incorporated herein by reference, which covers Lots 1 through 201, inclusive, in The Farm, a subdivision as surveyed, platted and recorded in Douglas County, Nebraska;

WHEREAS, said covenants, conditions, restrictions and easements for the subdivision dated the 7th day of June, 1977, were recorded in Book 590 at Page 388 in the office of the Register of Deeds of Douglas County, Nebraska; said covenants, conditions, restrictions and easements are hereinafter referred to as "Covenants",

WHEREAS, said Covenants were amended by a document entitled "Amendment to Protective Covenants", dated the 12th day of March, 1979, and recorded in Book 612 at Page 40 in the Register of Deeds of Douglas County, Nebraska; and

WHEREAS, said Covenants were amended by a document entitled "Second Amendment to Protective Covenants", dated the 18th day of September, 1979, and recorded in Book 621 at Page 75 in the Register of Deeds of Douglas County, Nebraska; and

WHEREAS, The Farm, Ltd., a Nebraska limited partnership, has by quit claim deeds dated June 5, 1981, conveyed to the under-signed Lots 1, 3, 4, 5, 41 through 175, inclusive, and 177 through



foregoing Third Amendment to Protective Covenants, and acknowledged the execution thereof to be their voluntary act and deed.

Witness my hand and Notarial Seal the day and year last above written.

*John R. McCormack*  
NOTARY PUBLIC

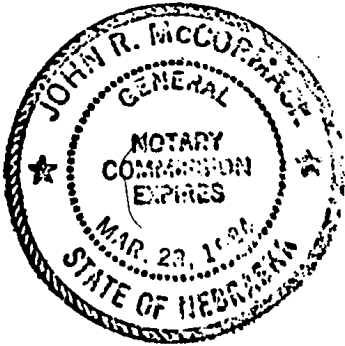


EXHIBIT "A"

BOOK 681 PAGE 28

Presented to The Office of  
GEORGE E. EHRHART  
County Surveyor and Engineer  
Douglas County

Notes.

and existing corners at points A, B, C, D, E, F, G, H, & J. Set point N at intersection  
lines D to E and E to H. Produced and chained line A to D 2652.87 feet setting point K  
line one half the distance (1326.44) south of A. Produced and chained line B to H  
1.80' setting point L on line one half the distance (1325.90) south of B. Produced and  
lined line D to N 2651.31' setting point M on line one half the distance (1325.66) east  
J. Chained line K to L 2643.45'; D to F 2651.12', F to G 1372.89' and G to H 2648.45  
t. At points K, L, M, and N set 5/8 inch x 30 inch rebar, wood hub, and lath. All  
ss produced with Wild Theodolite T16-158165 ED. All distances measured with 100 foot  
of chain.

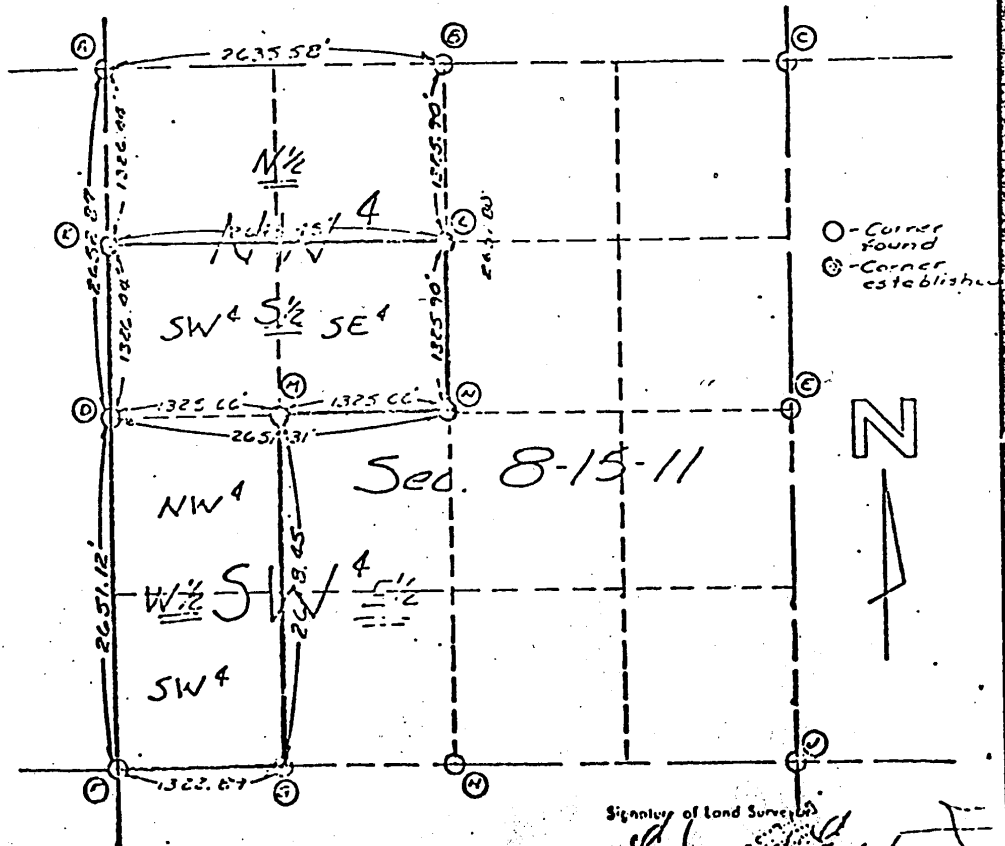
LAND SURVEYOR'S CERTIFICATE

I hereby certify that this plot, map, survey or report was made by me or under my direct personal supervision and that I am  
a duly Registered Land Surveyor under the laws of the State of Nebraska.

Description

South half of the Northwest Quarter and the West half of the Southwest Quarter, Section  
8 Township 15 Range 11 East of the 6th P.M., Douglas County, Nebraska, containing 161.16  
Acres.

to scale showing tract surveyed with all pertinent points.



Signature of Land Surveyor  
*George E. Ehrhart*

RECEIVED  
Board  
Index  
Field  
S. H. R. 1/18/74

Page 110  
Date June 3, 1974  
No. 101

RECEIVED  
PH 3-40  
1974

RECEIVED  
1982 DEC -9 PM 2:23

C. HAROLD OSTLER  
REGISTER OF DEEDS  
DOUGLAS COUNTY, NEBR.

18  
613  
110  
18  
18  
18

RECEIVED  
INDEXED  
COMPILED  
18  
18  
18

POOR INSTRUMENT FILED