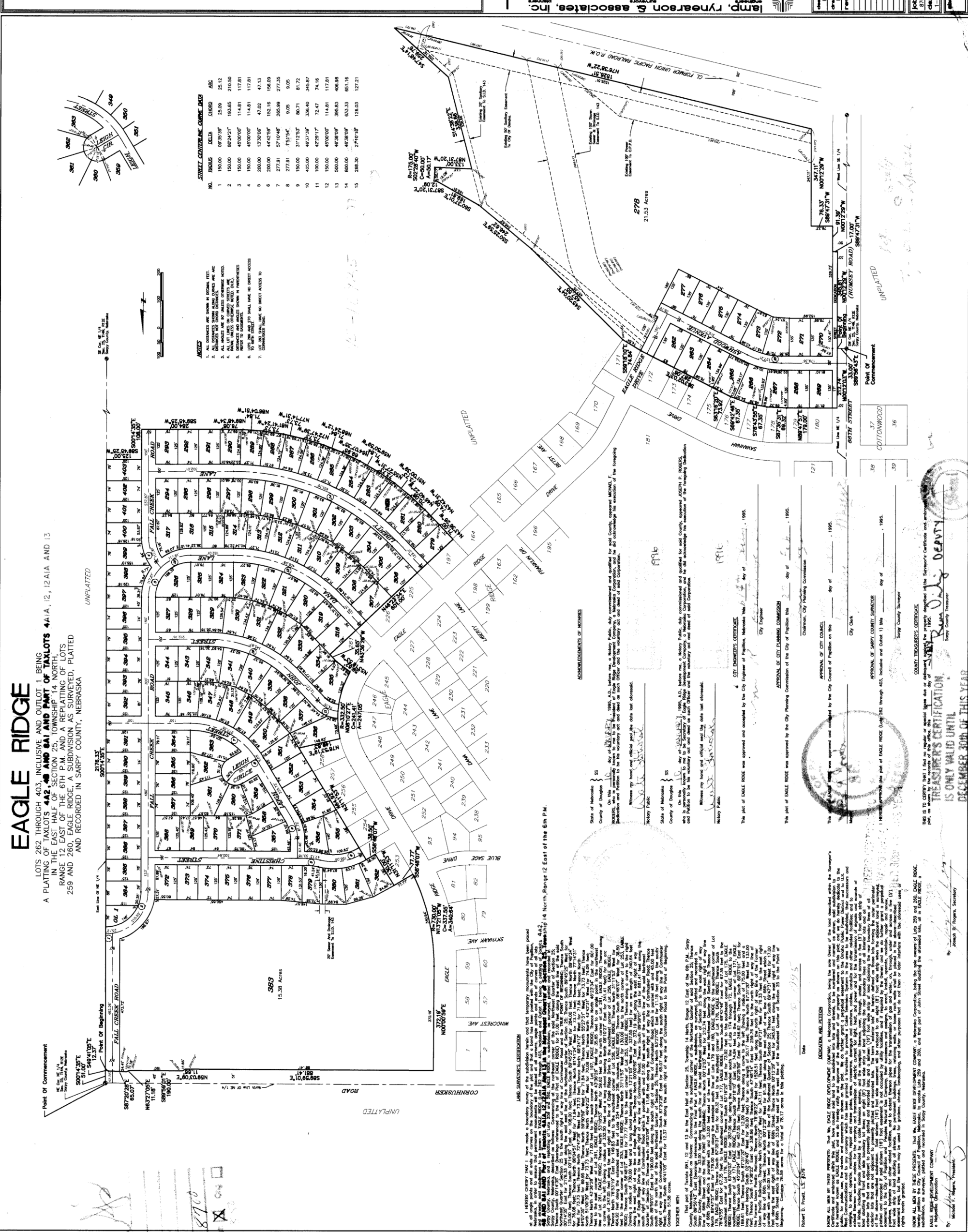


# EAGLE RIDGE

LOTS 262 THROUGH 403, INCLUSIVE AND OUTLOT 1 BEING A PLATING OF TAXLOTS 442, 48 AND PART OF TAXLOTS 4A1A, 12, 12A AND 13 IN THE EAST HALF OF SECTION 25, TOWNSHIP 14 NORTH, RANGE 12 EAST OF THE 6TH P.M. AND A REPLATING OF LOTS 259 AND 260, EAGLE RIDGE, A SUBDIVISION AS SURVEYED, PLATED AND RECORDED IN SARP COUNTY, NEBRASKA

UNPLATED



**AREAS**

1. ALL BORDERS ARE SHOWN IN RED INK. FEET.
2. ALL AREAS ARE MEASURED FROM THE CENTER OF THE LOTS.
3. ALL AREAS ARE MEASURED TO THE CENTER OF THE LOTS.
4. ALL AREAS ARE MEASURED TO THE CENTER OF THE LOTS.
5. ALL AREAS ARE MEASURED TO THE CENTER OF THE LOTS.
6. ALL AREAS ARE MEASURED TO THE CENTER OF THE LOTS.
7. ALL AREAS ARE MEASURED TO THE CENTER OF THE LOTS.

NO.	BOUNDARY	BEARING	DISTANCE	AREA
1	DELTA	09°23'30"	23.09	25.12
2	DELTA	09°23'30"	23.09	25.12
3	DELTA	09°23'30"	23.09	25.12
4	DELTA	09°23'30"	23.09	25.12
5	DELTA	09°23'30"	23.09	25.12
6	DELTA	09°23'30"	23.09	25.12
7	DELTA	09°23'30"	23.09	25.12
8	DELTA	09°23'30"	23.09	25.12
9	DELTA	09°23'30"	23.09	25.12
10	DELTA	09°23'30"	23.09	25.12
11	DELTA	09°23'30"	23.09	25.12
12	DELTA	09°23'30"	23.09	25.12
13	DELTA	09°23'30"	23.09	25.12
14	DELTA	09°23'30"	23.09	25.12
15	DELTA	09°23'30"	23.09	25.12

FINAL PLAN

8700  
C. DWG/B720P4  
1/10

**LEGAL DESCRIPTION**

THESE ARE THE SEVERAL LOTS IN SECTION 25, TOWNSHIP 14 NORTH, RANGE 12 EAST OF THE 6TH P.M., SARP COUNTY, NEBRASKA. THESE LOTS ARE BEING PLATED AND RECORDED IN SARP COUNTY, NEBRASKA.

APPROVAL OF CITY ENGINEER  
APPROVAL OF CITY PLANNING COMMISSION  
APPROVAL OF CITY COUNCIL  
APPROVAL OF SARP COUNTY SUPERVISOR

**TREASURER'S CERTIFICATION**  
IS ONLY VALID UNTIL  
DECEMBER 30TH OF THIS YEAR

