

FILED NO. S2126
PLAT 300K J3 PAGE 65
DEC 11 PM 12:49
DAVID C. ROBERTSON
LOUIE A. THOMPSON
RECORDED
HARRIS COUNTY, TEXAS

FINAL PLAT OF
EAGLE RIDGE ACRES, PHASE III
LOTS 51 THROUGH 58

NOTE: A PART OF LAND LOCATED IN A PART OF THE NORTHEAST QUARTER SECTION 3, T78N, R44W, COUNTY OF HARRIS, TEXAS, IS NOT BEING PLATTED HEREON. THE PART OF LAND NOT BEING PLATTED HEREON IS DESCRIBED AS FOLLOWS: THE SOUTHWEST QUARTER SECTION 3, T78N, R44W, COUNTY OF HARRIS, TEXAS.

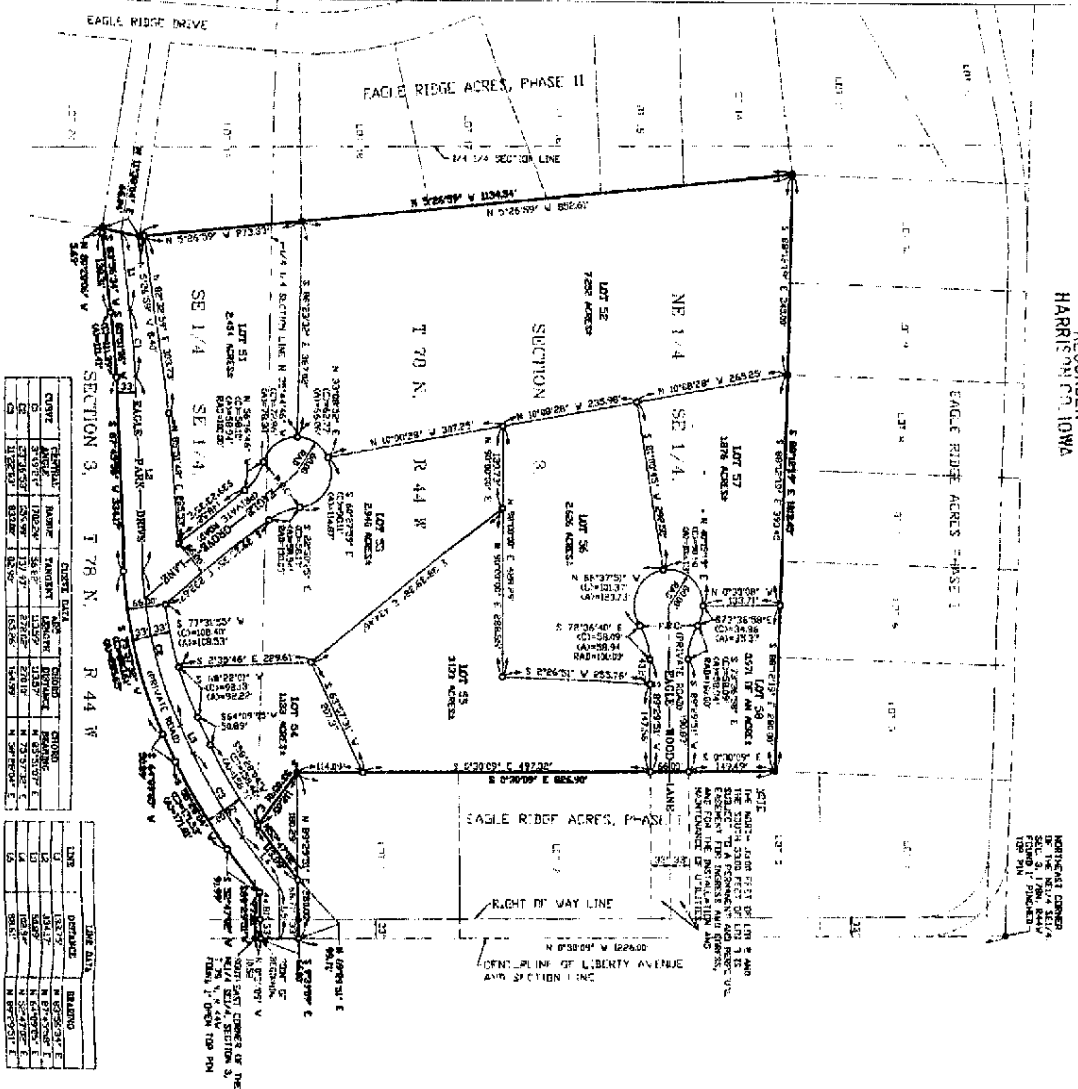


Table with 4 columns: CHAIN, BEARING, DISTANCE, AREA. It lists survey data for various points and lines on the plat.

Table with 4 columns: CHAIN, BEARING, DISTANCE, AREA. It lists survey data for various points and lines on the plat.

Table with 4 columns: CHAIN, BEARING, DISTANCE, AREA. It lists survey data for various points and lines on the plat.

NOTICE: THIS DOCUMENT HAS BEEN RECORDED.
I, David C. Robertson, County Clerk of Harris County, Texas, do hereby certify that the foregoing is a true and correct copy of the original as recorded in my office.

NOTICE: THIS DOCUMENT HAS BEEN RECORDED.
I, Louie A. Thompson, County Clerk of Harris County, Texas, do hereby certify that the foregoing is a true and correct copy of the original as recorded in my office.

NOTICE: THIS DOCUMENT HAS BEEN RECORDED.
I, James C. D., County Clerk of Harris County, Texas, do hereby certify that the foregoing is a true and correct copy of the original as recorded in my office.

NOTICE: THIS DOCUMENT HAS BEEN RECORDED.
I, [Signature], County Clerk of Harris County, Texas, do hereby certify that the foregoing is a true and correct copy of the original as recorded in my office.

NOTICE: THIS DOCUMENT HAS BEEN RECORDED.
I, [Signature], County Clerk of Harris County, Texas, do hereby certify that the foregoing is a true and correct copy of the original as recorded in my office.

NOTICE: THIS DOCUMENT HAS BEEN RECORDED.
I, [Signature], County Clerk of Harris County, Texas, do hereby certify that the foregoing is a true and correct copy of the original as recorded in my office.

NOTICE: THIS DOCUMENT HAS BEEN RECORDED.
I, [Signature], County Clerk of Harris County, Texas, do hereby certify that the foregoing is a true and correct copy of the original as recorded in my office.

NOTICE: THIS DOCUMENT HAS BEEN RECORDED.
I, [Signature], County Clerk of Harris County, Texas, do hereby certify that the foregoing is a true and correct copy of the original as recorded in my office.

NOTICE: THIS DOCUMENT HAS BEEN RECORDED.
I, [Signature], County Clerk of Harris County, Texas, do hereby certify that the foregoing is a true and correct copy of the original as recorded in my office.

NOTICE: THIS DOCUMENT HAS BEEN RECORDED.
I, [Signature], County Clerk of Harris County, Texas, do hereby certify that the foregoing is a true and correct copy of the original as recorded in my office.

NOTICE: THIS DOCUMENT HAS BEEN RECORDED.
I, [Signature], County Clerk of Harris County, Texas, do hereby certify that the foregoing is a true and correct copy of the original as recorded in my office.

NOTICE: THIS DOCUMENT HAS BEEN RECORDED.
I, [Signature], County Clerk of Harris County, Texas, do hereby certify that the foregoing is a true and correct copy of the original as recorded in my office.

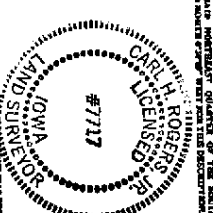


Table with 4 columns: CHAIN, BEARING, DISTANCE, AREA. It lists survey data for various points and lines on the plat.