

PLATERS

SECOND ADDITION

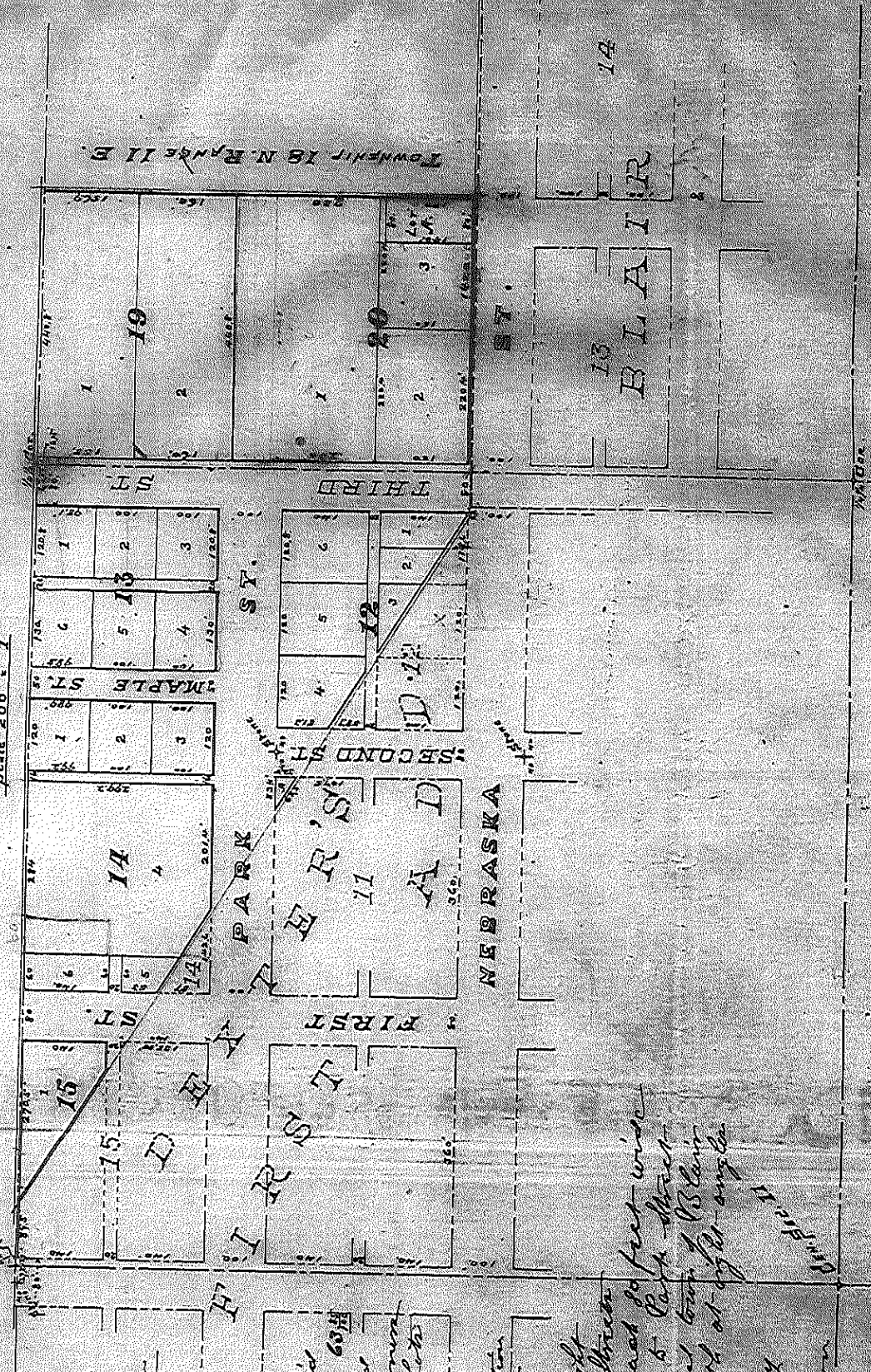
TO

BLAIR

WASHINGTON CO.

NEB.

Scale 200' = 1"



of Blair
 in
 Top of
 W. Neb.
 East of
 E. 1/4 of said
 sec. 17 is 60 1/2
 P. 8 1/4 of same
 - the corner
 of the lots
 - place
 continuation
 section 8
 with at right
 of of Blair
 we are each 60 feet wide
 angles to Park Street
 the original town of Blair
 was laid out at right angles
 to an Alley
 as shown
 here.