

DEERFIELD REPLAT I

(LOTS 1R THROUGH 20R, INCLUSIVE,
BEING A REPLAT OF LOTS 5A THROUGH
17B, DEERFIELD SUBDIVISION)

FILED SEPTEMBER 14, 2001

PLAT BOOK 2

PAGES 1088-1091

INSTRUMENT NO 200104228

*Slide # 230 in plat
Cabinet*

DEERFIELD REPLAT I

KNOW ALL MEN BY THESE Association, MORTGAGEE, be being subdivided, as show last date shown hereon.

LOTS 1R THROUGH 20R, INCLUSIVE, BEING A REPLAT OF LOTS 5A THROUGH 17B, DEERFIELD SUBDIVISION, CITY OF BLAIR, WASHINGTON COUNTY, NEBRASKA

OWNER

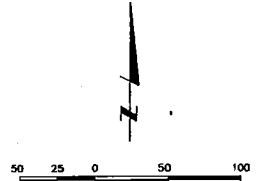
JCM Investments, Inc.
By Judith C. Morrison, Pr

FILED

01 SEP 14 AM 8:02

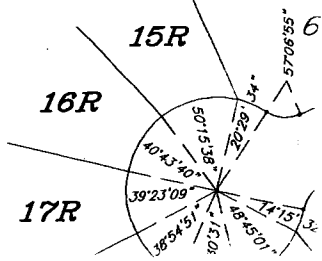
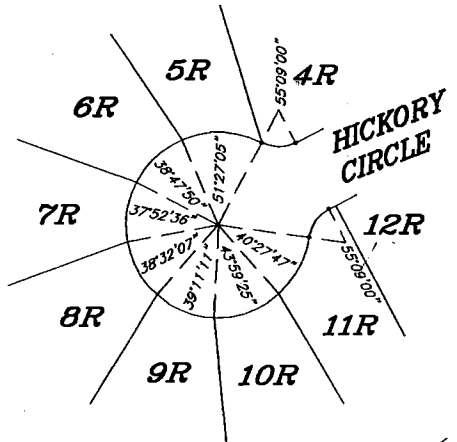
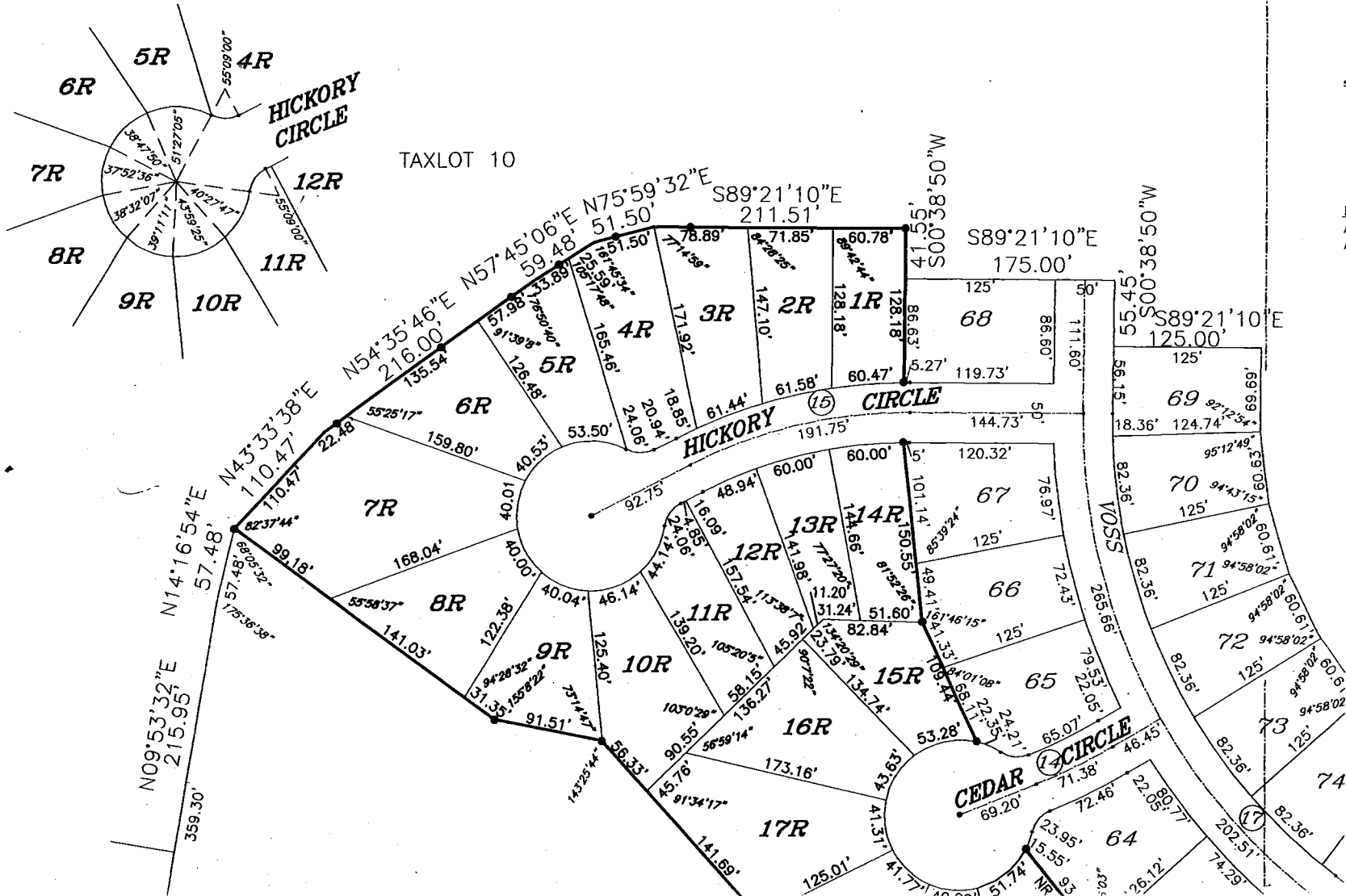
CHARLOTTE L. PETERSEN
WASHINGTON COUNTY CLERK
BLAIR, NEBR.

NW COR., NW1/4, SE1/4,
Sec. 2, T18N, R11E,
Washington County, Ne.

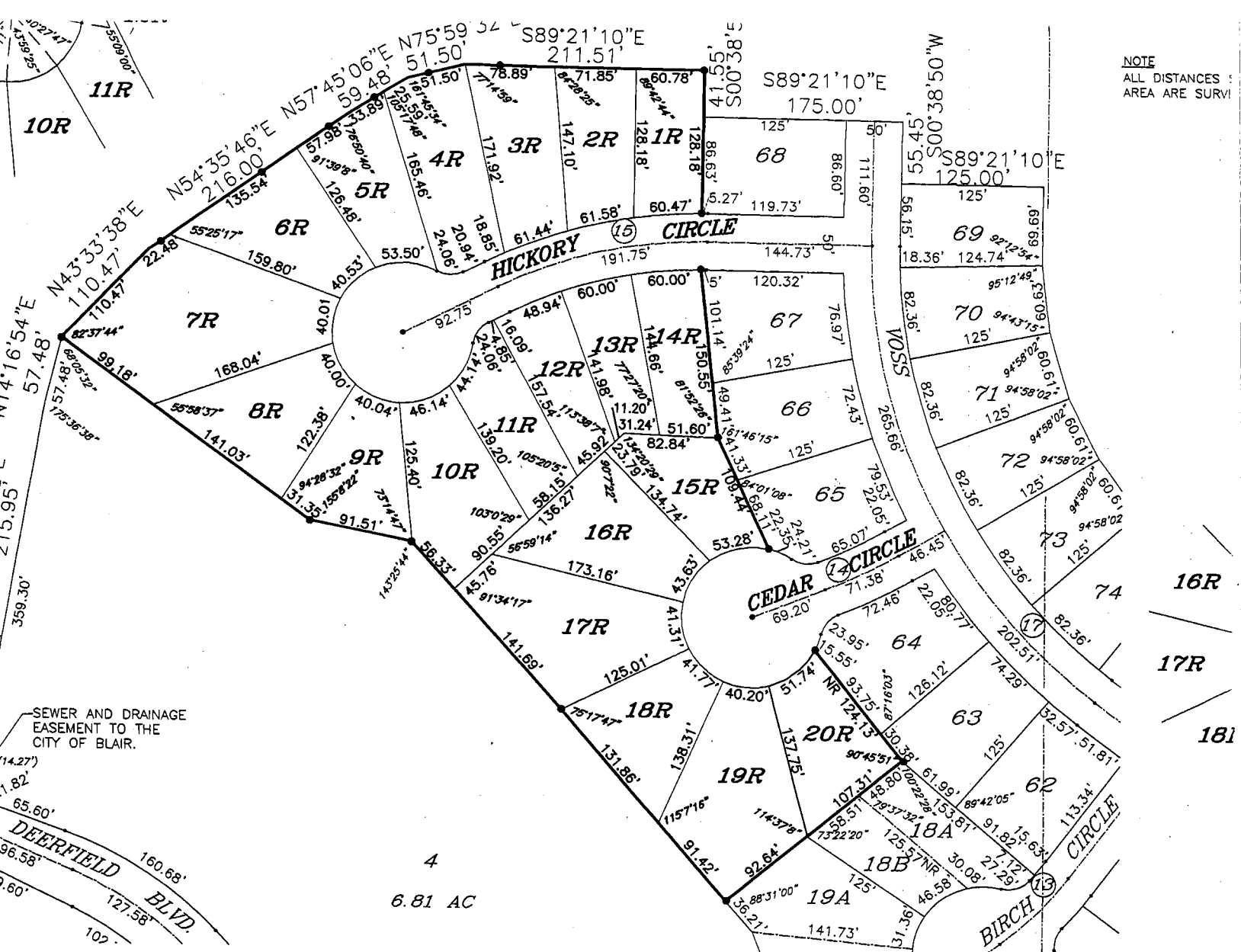


- = FOUND 5/8" REBAR
- = FOUND NAIL WITH PLASTIC CAP

NOTE
ALL DISTANCES SHOWN IN THE REPLAT AREA ARE SURVEYED DIMENSIONS.



NOTE
ALL DISTANCES &
AREA ARE SURV



LOT REPLAT TABULATION

LOT WIDTH AT BUILDING SETBACK	LOT AREA (SF)	LOT NO.	LOT WIDTH AT BUILDING SETBACK	LOT AREA (SF)
60.47'	7,887.44	11R	60.75'	8,924.42
61.58'	9,140.58	12R	62.33'	8,924.10
61.44'	10,906.62	13R	60.00'	7,252.56
63.05'	11,967.66	14R	60.00'	8,372.74
60.00'	9,990.87	15R	61.94'	8,925.34
60.00'	11,431.51	16R	60.25'	12,678.78
60.00'	21,433.82	17R	62.82'	15,866.63
60.00'	12,004.57	18R	62.41'	10,607.98
60.00'	10,077.53	19R	60.87'	15,408.45
60.00'	12,211.85	20R	63.07'	9,809.77

CENTERLINE CURVE DATA

CURVE	RADIUS	ARC LENGTH	CHORD LEN	CHORD BEARING
C14	500.00'	71.38'	71.32'	N64°17'40"E
C15	400.00'	191.75'	189.92'	N76°54'51"E

Recorded _____
 General _____
 Numerical _____
 Photostat _____
 Printed _____

STATE OF NEBRASKA COUNTY
 ENTERED IN NUMERICAL INDEX
 THIS 14th DAY OF Sept
 AT 8:22 O'CLOCK A. M.
 Plat Book 3 AT PAGE 108
 COUNTY CLERK Charles
 DEPUTY Kaseval M.