

FILED

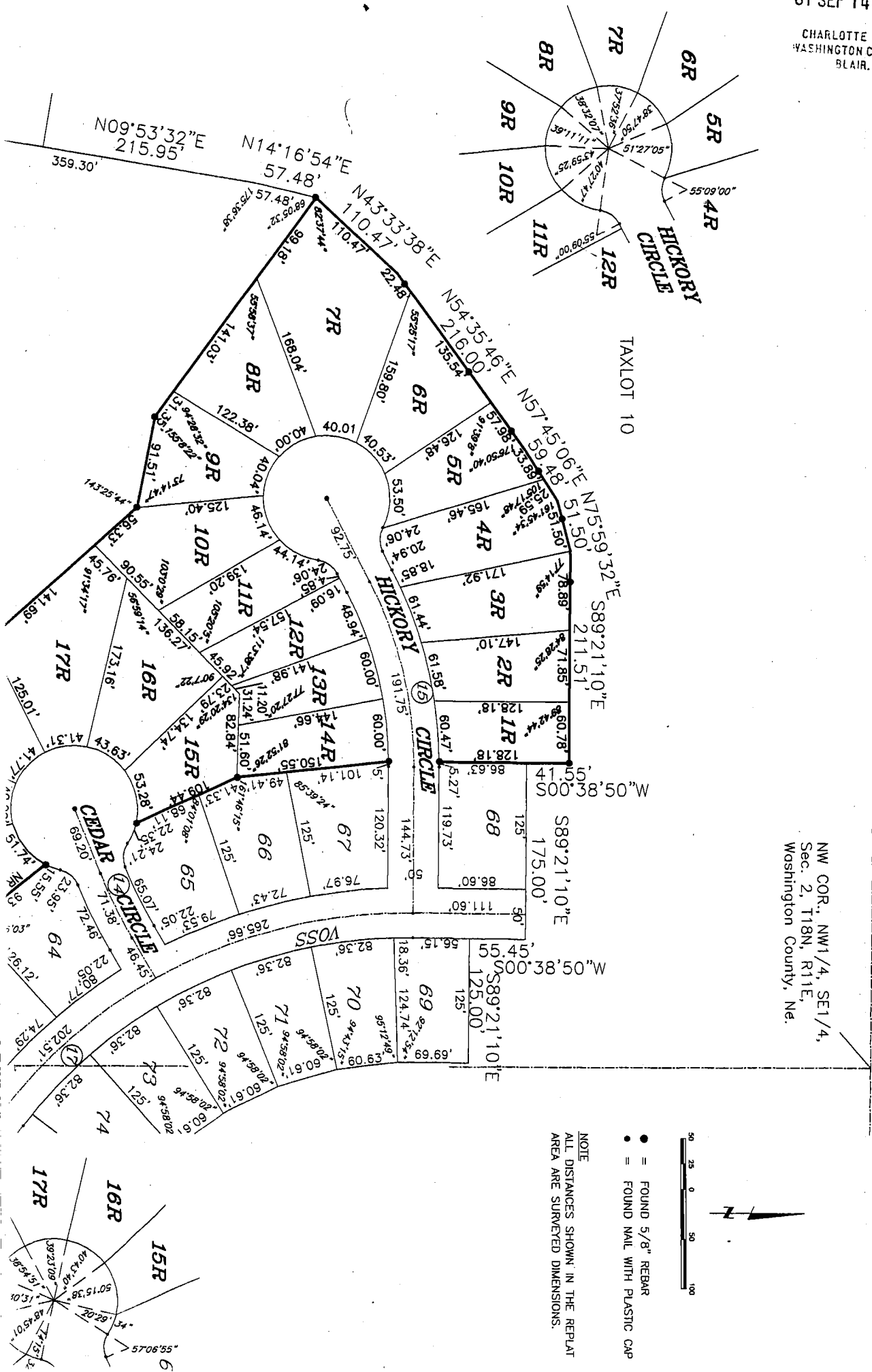
01 SEP 14 AM 8:02

CHARLOTTE L. PETERSEN  
WASHINGTON COUNTY CLERK  
BLAIR, NEBR.

# DEERFIELD REPLAT I

LOTS 1R THROUGH 20R, INCLUSIVE, BEING A REPLAT OF LOTS 5A THROUGH 17B,  
DEERFIELD SUBDIVISION, CITY OF BLAIR, WASHINGTON COUNTY, NEBRASKA

NW COR., NW1/4, SE1/4,  
Sec. 2, T18N, R11E,  
Washington County, Ne.



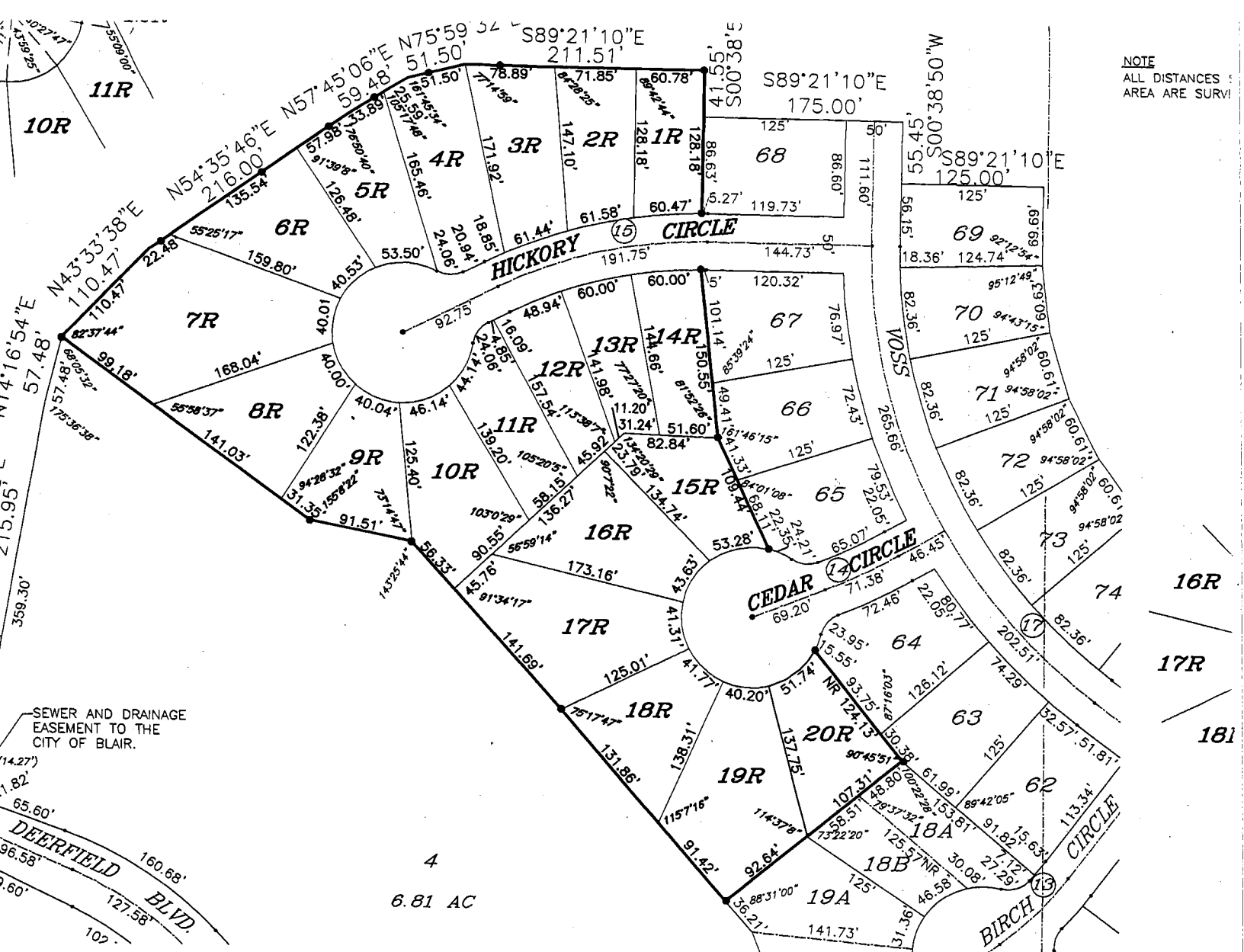
KNOW ALL MEN BY THESE  
ASSOCIATION, MORTGAGEE, b  
being subdivided, as show  
last date shown, hereon.

OWNER  
JCM Investments, Inc.  
By Judith C. Morrison, Pr

NOTE  
ALL DISTANCES SHOWN IN THE REPLAT  
AREA ARE SURVEYED DIMENSIONS.

- = FOUND 5/8" REBAR
- = FOUND NAIL WITH PLASTIC CAP

NOTE  
ALL DISTANCES &  
AREA ARE SURV



LOT REPLAT TABULATION

| LOT WIDTH AT BUILDING SETBACK | LOT AREA (SF) | LOT NO. | LOT WIDTH AT BUILDING SETBACK | LOT AREA (SF) |
|-------------------------------|---------------|---------|-------------------------------|---------------|
| 60.47'                        | 7,887.44      | 11R     | 60.75'                        | 8,924.42      |
| 61.58'                        | 9,140.58      | 12R     | 62.33'                        | 8,924.10      |
| 61.44'                        | 10,906.62     | 13R     | 60.00'                        | 7,252.56      |
| 63.05'                        | 11,967.66     | 14R     | 60.00'                        | 8,372.74      |
| 60.00'                        | 9,990.87      | 15R     | 61.94'                        | 8,925.34      |
| 60.00'                        | 11,431.51     | 16R     | 60.25'                        | 12,678.78     |
| 60.00'                        | 21,433.82     | 17R     | 62.82'                        | 15,866.63     |
| 60.00'                        | 12,004.57     | 18R     | 62.41'                        | 10,607.98     |
| 60.00'                        | 10,077.53     | 19R     | 60.87'                        | 15,408.45     |
| 60.00'                        | 12,211.85     | 20R     | 63.07'                        | 9,809.77      |

CENTERLINE CURVE DATA

| CURVE | RADIUS  | ARC LENGTH | CHORD LEN | CHORD BEARING |
|-------|---------|------------|-----------|---------------|
| C14   | 500.00' | 71.38'     | 71.32'    | N64°17'40"E   |
| C15   | 400.00' | 191.75'    | 189.92'   | N76°54'51"E   |

Recorded \_\_\_\_\_  
 General \_\_\_\_\_  
 Numerical \_\_\_\_\_  
 Proximal \_\_\_\_\_  
 Printed \_\_\_\_\_

STATE OF NEBRASKA COUNTY  
 ENTERED IN NUMERICAL INDEX  
 THIS 14<sup>th</sup> DAY OF Sept  
 AT 8:22 O'CLOCK A. M.  
 Plat Book 3 AT PAGE 108  
 COUNTY CLERK Charles  
 DEPUTY Kareem M.