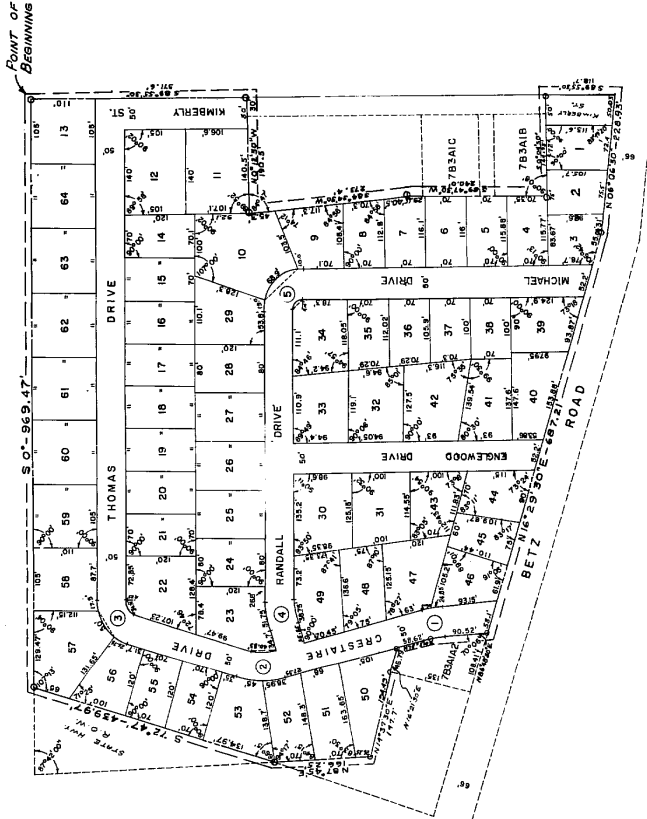
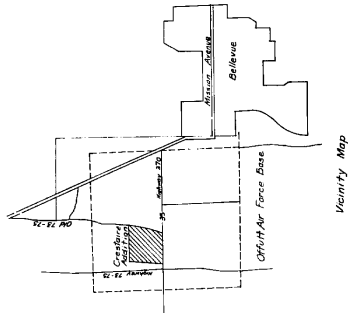


# CRESTAIRE ADDITION

AN ADDITION TO SARPY COUNTY, NEBRASKA, BEING A SUBDIVISION OF THE S 1/4 OF THE NW 1/4 OF SECTION 35, TOWNSHIP 14 NORTH, RANGE 13 EAST



- CURVE DATA**
- ① R 174.85  
T 181°
  - ② R 332.1130  
T 36.07°
  - ③ R 125.1  
T 125.1°
  - ④ R 72.4530  
T 36.84°
  - ⑤ R 30  
T 4° 35'
  - ⑥ R 175  
T 75°
  - ⑦ R 49.43  
T 39.82°
  - R 40°



## DEDICATION

KNOW ALL MEN BY THESE PRESENTS THAT I, EDITH A. WESTCOTT, BEING SOLE OWNER AND PROPRIETOR OF THE LAND DESCRIBED IN THE SURVEYOR'S CERTIFICATE AND EMBRACED WITHIN THIS PLAT HAVE CAUSED THE SAME TO BE SUBDIVIDED INTO LOTS AND STREETS, SAID SUBDIVISION TO BE HEREAFTER KNOWN AS CRESTAIRE ADDITION, THE LOTS NUMBERED AS SHOWN, AND I HEREBY RATIFY AND APPROVE THE DISPOSITION OF THE PROPERTY AS SHOWN ON THIS PLAT. I HEREBY DEDICATE TO THE PUBLIC USE THE STREETS AS SHOWN HEREIN, AND DEDICATE A 5' FOOT PERMANENT EASEMENT ALONG THE REAR AND SIDE LINES FOR TELEPHONE AND ELECTRIC POLES AND LINES. IN WITNESS WHEREOF I DO HEREBY SET MY HAND THIS 17<sup>th</sup> DAY OF July, 1963.

*Edith A. Westcott*  
EDITH A. WESTCOTT

FIELD FILED FOR RECORD IN SARPY COUNTY NEBR. August 2, 1963. At Omaha, Nebraska. J.M.H.  
AND RECORDED IN BOOK 22 OF Public Records - REGISTER OF DEEDS

BELLEVUE CITY ENGINEER'S APPROVAL  
APPROVED BY THE CITY ENGINEER OF BELLEVUE THIS 17<sup>th</sup> DAY OF October, 1962.

*James N. Johnson*  
JAMES N. JOHNSON  
REGISTERED LAND SURVEYOR

BELLEVUE CITY COUNCIL APPROVAL  
THIS SUBDIVISION OF CRESTAIRE ADDITION WAS APPROVED AND ACCEPTED BY THE CITY COUNCIL OF THE CITY OF BELLEVUE, NEBRASKA ON THIS 23<sup>rd</sup> DAY OF Sept, 1962, IN ACCORDANCE WITH THE STATE STATUTES OF NEBRASKA.  
ATTEST: *Robert W. Johnson*  
CITY CLERK

## SURVEYOR'S CERTIFICATE

I HEREBY CERTIFY THAT I HAVE SURVEYED AND STALLED IRON PIPES AS SHOWN ON THIS PLAT ALL CORNERS OF ALL LOTS AND STREETS IN CRESTAIRE ADDITION AN ADDITION IN THE SOUTH 1/2 OF THE NORTHWEST 1/4 OF SECTION 35, TOWNSHIP 14 NORTH, RANGE 13 EAST, OF THE 6<sup>th</sup> P.M., SARPY COUNTY, NEBRASKA, SAID ADDITION FORMERLY TAX LOTS 783A04, 783A03, 783A04, AND 783A05.

BEGINNING AT THE NORTHWEST CORNER SAID TAX LOT 783A04 WHICH POINT IS ALSO 1757.80 FEET ± WEST OF THE SOUTHEAST CORNER OF THE NORTH 1/2 OF THE NORTHWEST 1/4 OF SAID SECTION 35 THENCE SOUTH ALONG THE WEST LINE OF TAX LOT 783A04 ASSUMING THE WEST LINE TO RUN DUE NORTH AND SOUTH A DISTANCE OF 989.47 FEET, THENCE SOUTH 72° 47' EAST A DISTANCE OF 439.97 FEET; THENCE NORTH 87° 45' EAST A DISTANCE OF 166.25 FEET; THENCE NORTH 14° 37' 30" EAST A DISTANCE OF 147.7 FEET; THENCE NORTH 16° 21' 30" EAST A DISTANCE OF 46.75 FEET; THENCE NORTH 75° 03' 30" EAST A DISTANCE OF 58.62 FEET; THENCE NORTH 86° 49' 30" EAST A DISTANCE OF 90.62 FEET; THENCE NORTH 18° 29' 30" EAST A DISTANCE OF 687.21 FEET; THENCE NORTH 06° 06' 30" EAST A DISTANCE OF 228.93 FEET; THENCE SOUTH 89° 55' 30" WEST A DISTANCE OF 118.7 FEET; THENCE SOUTH 00° 04' 30" EAST A DISTANCE OF 184.95 FEET; THENCE SOUTH 85° 47' 30" WEST A DISTANCE OF 240.00 FEET; THENCE SOUTH 84° 34' 30" WEST A DISTANCE OF 273.4 FEET; THENCE NORTH 02° 30' W A DISTANCE OF 1905 FEET THENCE 89° 55' 30" W A DISTANCE OF 371.6 FEET TO THE POINT OF BEGINNING.

THIS TRACT CONTAINS 104 LOTS 783A04, 783A03, 783A04, AND 783A05. Containing 51.65 Acres

*James N. Johnson*  
JAMES N. JOHNSON  
REGISTERED LAND SURVEYOR



COUNTY SURVEYOR APPROVAL  
I FRANCIS I. WALTZ HEREBY APPROVE OF THE SURVEY AND SUBDIVISION OF THIS PLAT PROPERTY AS SHOWN ON THIS CERTIFICATE.  
DATE 10-17-62  
*Francis I. Waltz*  
SARPY COUNTY SURVEYOR



COUNTY TREASURER CERTIFICATE  
I HEREBY CERTIFY THAT THE RECORDS OF MY OFFICE SHOW NO TAXES DUE OR DELINQUENT UPON THE PROPERTY DESCRIBED IN THE CERTIFICATE OF SURVEY AS OF THIS 17<sup>th</sup> DAY OF October, 1962.  
*Francis J. Waltz*  
SARPY COUNTY TREASURER

PLANNING BOARD APPROVAL  
APPROVED BY THE BELLEVUE PLANNING COMMISSION THIS 17<sup>th</sup> DAY OF Oct, 1962.  
*Chairman: George*  
BELLEVUE PLANNING BOARD

## ACKNOWLEDGEMENT

STATE OF NEBRASKA  
COUNTY OF SARPY  
ON THIS 17 DAY OF October, 1962 BEFORE ME, A NOTARY PUBLIC, DULY COMMISSIONED AND QUALIFIED IN AND FOR SAID COUNTY, CAME EDITH A. WESTCOTT, WHO IS PERSONALLY KNOWN TO ME TO BE THE PERSON WHOSE NAME IS AFFIXED TO THE DEDICATION ON THIS PLAT AS OWNER OF THE PROPERTY DESCRIBED IN THE SURVEYOR'S CERTIFICATE ON THIS PLAT, AND SHE ACKNOWLEDGED THE SIGNING OF SAID TO BE HER VOLUNTARY ACT AND DEED.  
*Carol C. Johnson*  
NOTARY PUBLIC  
MY COMMISSION EXPIRES ON THE 27<sup>th</sup> DAY OF June, 1967

## FINAL PLAT

CRESTAIRE ADDITION  
AN ADDITION TO SARPY COUNTY, NEBRASKA, LOCATED IN THE S 1/2 OF THE NW 1/4 OF SECTION 35, T 14 N, R 13 E.  
NANCE ENGINEERING  
Engineers, Designers and Consultants  
OMAHA, NEBRASKA  
COUNCIL BLUFFS, IOWA

PROJECT NO.	CB II
SCALE	1" = 100'
DRAWN BY	R.F.B.
CHECKED BY	J.N.J.
DATE	SEPT. 4, 1962
SHEET NO.	1 OF 1

REVISED 4-12-63

98