

95-01704
ORDINANCE RECORD

ORDINANCE NO. 2820

AN ORDINANCE TO ANNEX TO THE CITY OF BELLEVUE, SARPY COUNTY, NEBRASKA, CERTAIN LANDS, LOTS AND REAL ESTATE LYING WITHIN THE BELOW DESCRIBED BOUNDARIES TO THE CITY OF BELLEVUE, SARPY COUNTY, NEBRASKA, AND DESIGNATING AN EFFECTIVE DATE.

WHEREAS, ALL OF THE LOTS, LANDS AND REAL ESTATE LYING WITHIN THE BOUNDARIES DESCRIBED AS FOLLOWS TO WIT:

Lots 1 thru 4, inclusive, and Outlot A, Cornhusker Center, being a replat of part of Tax 4F, located in the Northwest 1/4 of Section 27, T14N, R13E of the 6th P.M., Sarpy County, Nebraska,

(Dial Realty Development Corp.)

ARE CONTIGUOUS AND ADJACENT TO THE CITY OF BELLEVUE, NEBRASKA, AND ARE URBAN OR SUBURBAN IN CHARACTER, AND

WHEREAS, SAID REAL ESTATE WILL RECEIVE MATERIAL BENEFITS AND ADVANTAGES FROM ANNEXATION TO THE SAID CITY.

NOW, THEREFORE, BE IT ORDAINED BY THE MAYOR AND COUNCIL OF THE CITY OF BELLEVUE, NEBRASKA.

Section 1. All of the real estate lying within the area heretofore described be and the same hereby is included within the boundaries and territory of the City of Bellevue, Nebraska, and said lands and the persons residing thereon shall hereafter be subject to all of the rules, regulations, ordinances, taxes and all other burdens and benefits of other persons and territory included with the City of Bellevue, Nebraska.

Section 2. This ordinance shall take effect and be in full force and effect after its passage, approval and publication according to law.

ADOPTED by the Mayor and City Council this 26th day of September, 1994.



Stanley Banner
Mayor - Acting

Beverly J. Kelly
City Clerk

95-01704

First Reading: September 12, 1994

Second Reading: September 26, 1994

Third Reading: September 26, 1994

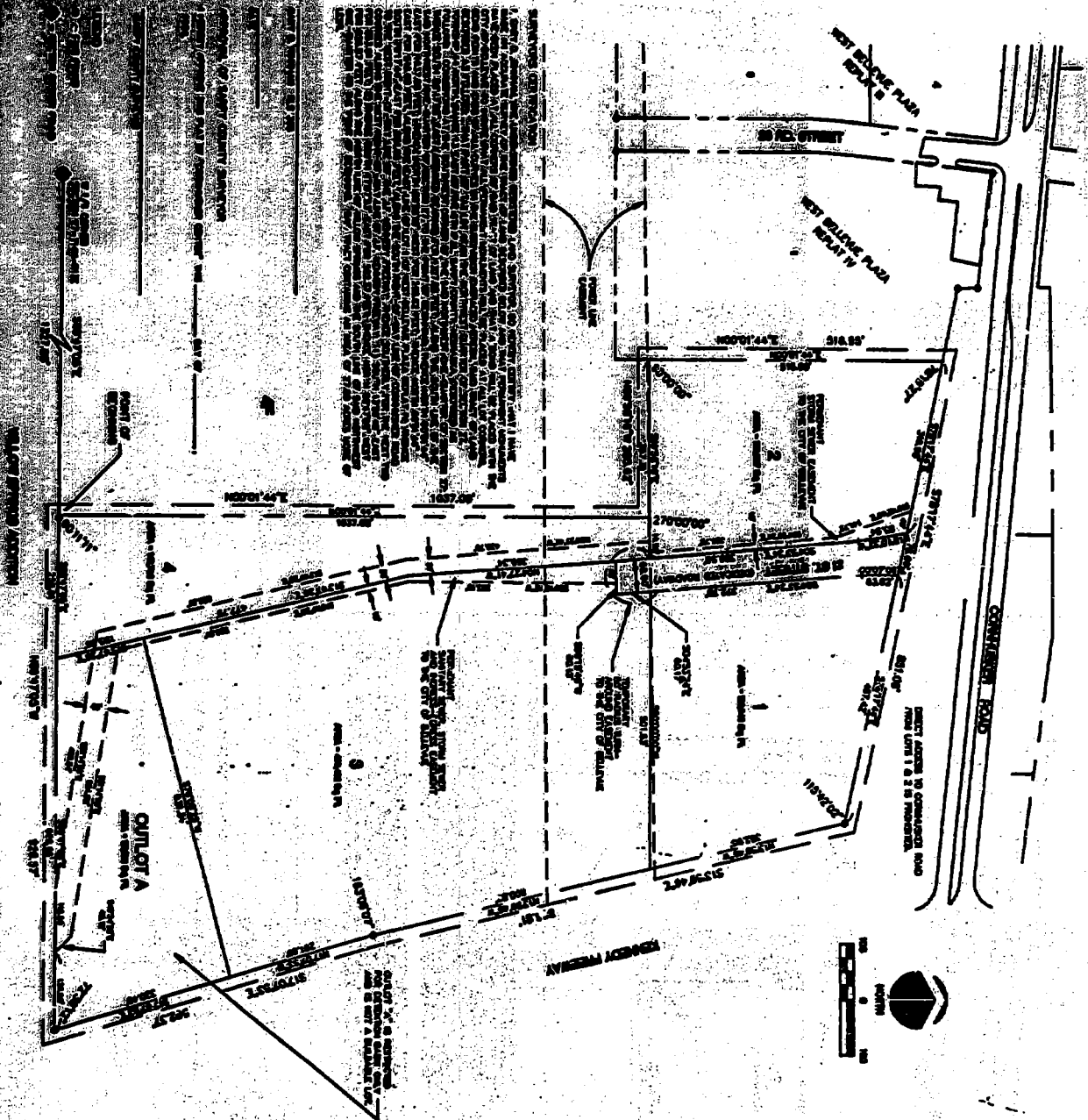
Proof	_____
D.E.	_____
Verify	_____ <i>m</i>
Filme	_____
Checked	_____
Fee \$	12.50

01704 *COB chg*

95-01704A

CORNHUSKER CENTER

AN ADDITION TO THE CITY OF BELLEVUE,
LOTS 14THRU 20 INCLUSIVE AND OUTLOT 'A', BEING A PART OF TAX LOT 4F
IN THE NW 1/4 OF SECTION 27, T4N, R3E, OF THE 6TH PM,
SARPY COUNTY, NEBRASKA



GENERAL NOTES

1. THE CITY OF BELLEVUE HAS REVIEWED THIS PLAN AND HAS APPROVED THE SAME FOR THE CITY OF BELLEVUE.
2. THE CITY OF BELLEVUE HAS REVIEWED THIS PLAN AND HAS APPROVED THE SAME FOR THE CITY OF BELLEVUE.
3. THE CITY OF BELLEVUE HAS REVIEWED THIS PLAN AND HAS APPROVED THE SAME FOR THE CITY OF BELLEVUE.
4. THE CITY OF BELLEVUE HAS REVIEWED THIS PLAN AND HAS APPROVED THE SAME FOR THE CITY OF BELLEVUE.
5. THE CITY OF BELLEVUE HAS REVIEWED THIS PLAN AND HAS APPROVED THE SAME FOR THE CITY OF BELLEVUE.

APPROVAL OF BELLEVUE CITY COUNCIL

The City of Bellevue hereby approves this plan and grants the authority to the applicant to carry out the same in accordance with the provisions of the City Ordinance No. 10-10-100, as amended, and the provisions of the Nebraska Uniform Land Use Ordinance, as amended.

APPROVED: _____
CITY CLERK

APPROVAL OF NEBRASKA PLANNING COMMISSION

The Nebraska Planning Commission hereby approves this plan and grants the authority to the applicant to carry out the same in accordance with the provisions of the Nebraska Uniform Land Use Ordinance, as amended.

APPROVED: _____
COMMISSIONER

APPROVAL OF SARPY COUNTY BOARD OF SUPERVISORS

The Sarpy County Board of Supervisors hereby approves this plan and grants the authority to the applicant to carry out the same in accordance with the provisions of the Nebraska Uniform Land Use Ordinance, as amended.

APPROVED: _____
CHAIRMAN

APPROVAL OF BELLEVUE PLANNING COMMISSION

The Bellevue Planning Commission hereby approves this plan and grants the authority to the applicant to carry out the same in accordance with the provisions of the Bellevue City Ordinance No. 10-10-100, as amended, and the provisions of the Nebraska Uniform Land Use Ordinance, as amended.

APPROVED: _____
CHAIRMAN

CREATED BY: [Name]

DATE: [Date]

RECEIVED
AUG 10 1994
PLANNING DEPT.