

CLERMONT COURT

AN ADDITION TO SARPY COUNTY, NEBR.
LOCATED IN THE NW 1/4 SEC. 26, T14N, R19E

CURVE DATA

① Δ = 17°46'10"	② Δ = 31°28'10"	③ Δ = 08°59'30"
D = 24.9008'	D = 14.6758'	D = 10.7171'
T = 40'	T = 11.00'	T = 40'
R = 256.89'	R = 390.42'	R = 534.62'
L = 79.36'	L = 214.44'	L = 79.86'
④ Δ = 17°46'10"	⑤ Δ = 31°28'10"	⑥ Δ = 08°59'30"
D = 24.9008'	D = 14.6758'	D = 10.7171'
T = 40'	T = 11.00'	T = 40'
R = 256.89'	R = 390.42'	R = 534.62'
L = 79.36'	L = 214.44'	L = 79.86'
⑦ Δ = 17°46'10"	⑧ Δ = 31°28'10"	⑨ Δ = 08°59'30"
D = 24.9008'	D = 14.6758'	D = 10.7171'
T = 40'	T = 11.00'	T = 40'
R = 256.89'	R = 390.42'	R = 534.62'
L = 79.36'	L = 214.44'	L = 79.86'

DEDICATION
These all maps by these presents that we, Arthur C. Peterson, Clerk of Sarpy County, Nebraska, do hereby certify that the streets and easements herein shown are to be subdivided into lots and streets as shown hereafter known as Clermont Court. Our intention is to be shown on this plat. We hereby dedicate to the public use the streets and easements shown on this plat. The easements provided for a temporary turn-around on the street beyond the south boundary of this plat. We do further dedicate a 5 foot wide easement along the rear and side lot lines for telephone and electric poles and lines.

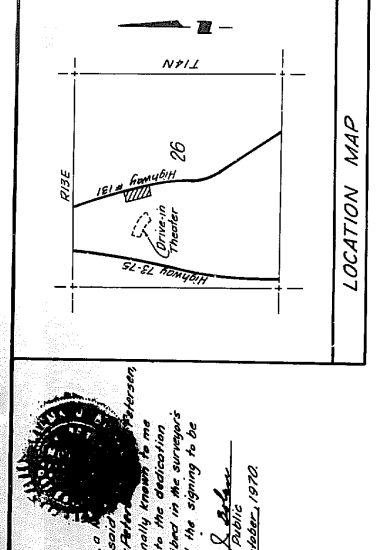
In witness whereof, we do hereunto set our hands and the day of August, 1966.
JERRY C. PETERSEN
Clerk of Sarpy County, Nebraska

DIAL REALTY, INC.
President
Secretary
City Clerk

ACKNOWLEDGEMENT
Shirley Nebraska
County of Sarpy

On this 18th day of August, 1966 before me, a duly commissioned and qualified Notary Public, Arthur C. Peterson, Clerk of Sarpy County, Nebraska, appeared the following persons, to-wit: **James E. Daniel, F. Day, who are personally known to me to be the persons whose names are, or are to be, on this plat as owners of the property described in the surveys; certificates on this plat and they acknowledged the signing to be their voluntary act and deed.**

My commission expires on the 28th day of October, 1972.
Notary Public



SURVEYOR'S CERTIFICATE
I hereby certify that I have surveyed and staked with iron pipes as shown on this plat all corners of all lots and streets in Clermont Court an addition in the North West 1/4 of Section 26, T14N, R19E of the 6th P.M., Sarpy County, Nebraska, said addition being formerly part of Tax Lot 641 more particularly described as follows: Commencing at the corner of said Section 26, thence N 90° 00' 00" W (assuming the South line being the West right-of-way line of Highway #191) a distance of 33 feet, thence N 18° 31' 10" W along the West right-of-way line of Highway #191 a distance of 432.65 feet to the point of beginning, thence S 78° 23' 10" W a distance of 140.00 feet, thence N 82° 05' 10" W a distance of 378.15 feet, thence N 27° 54' 10" E a distance of 140.00 feet, thence N 14° 11' 35" E a distance of 193.00 feet, thence N 60° 22' 50" W a distance of 433.03 feet, thence N 36° 23' 45" E a distance of 430.80 feet, thence N 77° 25' 20" E a distance of 72.82 feet, thence N 75° 23' 20" E a distance of 881.47 feet to the point of beginning. The West right-of-way line of Highway #191 a distance of 881.47 feet to the point of beginning. Said tract contains 12.13 acres, more or less.

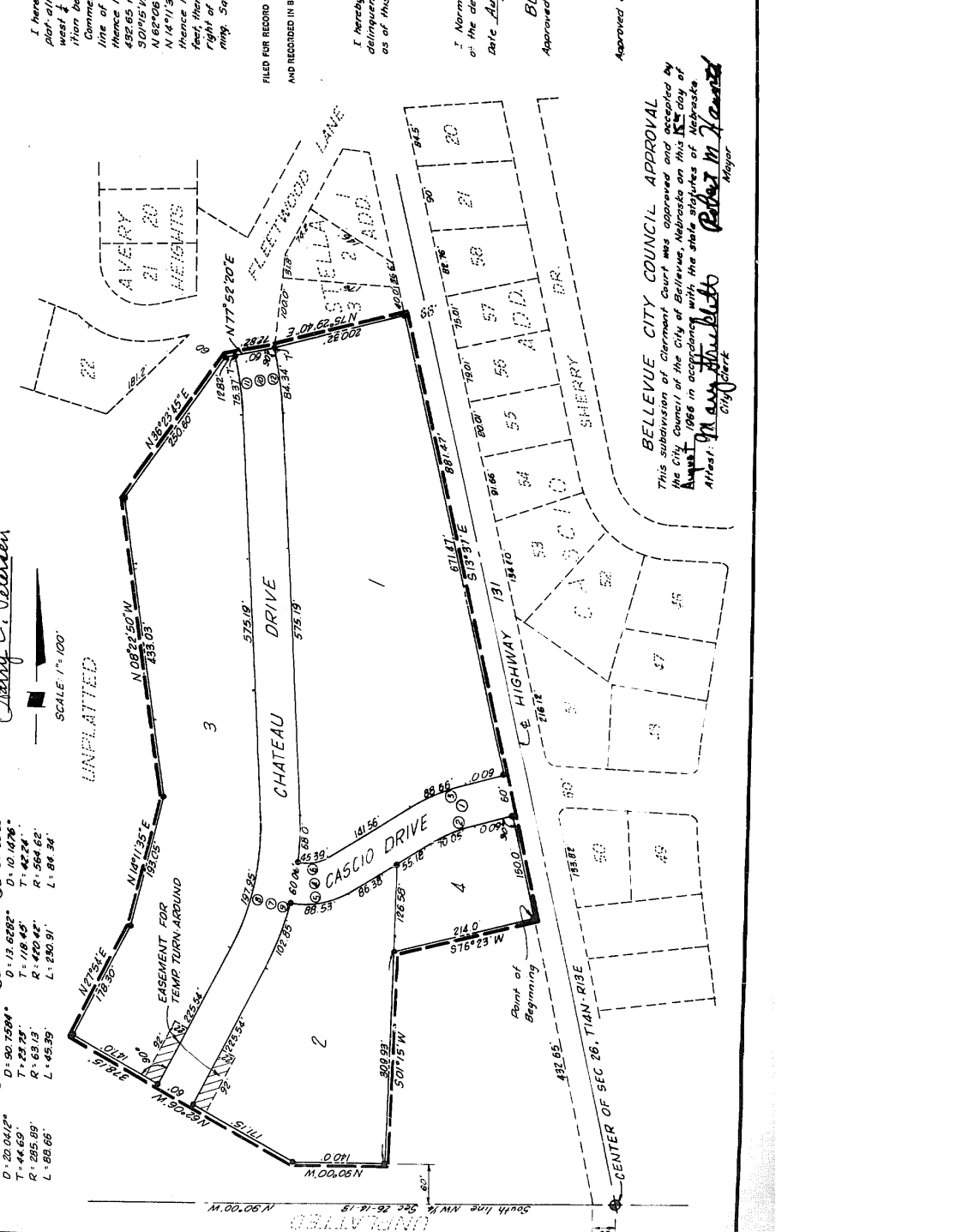
FILED FOR RECORD IN SARPY COUNTY, NEBR. ON AUG. 19, 1966, AT 1:30 O'CLOCK P.M.
AND RECORDED IN BOOK 1 OF PLATS, PAGE 111 (Official Book) REGISTER OF DEEDS

COUNTY TREASURER'S CERTIFICATE
I hereby certify that the records of my office show no taxes due or delinquent upon the property described in the certificate of survey as of this 8th day of August, 1966.
Don W. Smith
County Treasurer

COUNTY SURVEYOR APPROVAL
I Norman P. Whiting hereby approve of the survey and subdivision of the described property as shown on this plat.
Norman P. Whiting
County Surveyor

BELLEVUE CITY ENGINEER'S APPROVAL
Approved by the City Engineer of Bellevue this 15th day of August, 1966.
Bellevue City Engineer

PLANNING BOARD APPROVAL
Approved by the Bellevue Planning Commission this 15th day of August, 1966.
Bellevue Planning Board



BELLEVUE CITY COUNCIL APPROVAL
This subdivision of Clermont Court was approved and accepted by the City Council of the City of Bellevue, Nebraska on this 15th day of August, 1966 in accordance with the duties and powers of the City Council.
Robert M. Hansen
Mayor

FINAL PLAT
CLERMONT COURT
AN ADDITION TO SARPY COUNTY, NEBRASKA
LOCATED IN THE NW 1/4 OF SEC. 26, T14N, R19E
NIXON ENGINEERING COMPANY, INC.
6518 BLONDIE ST. OMAHA, NEBR.