

92-04252

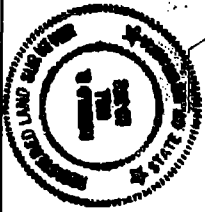
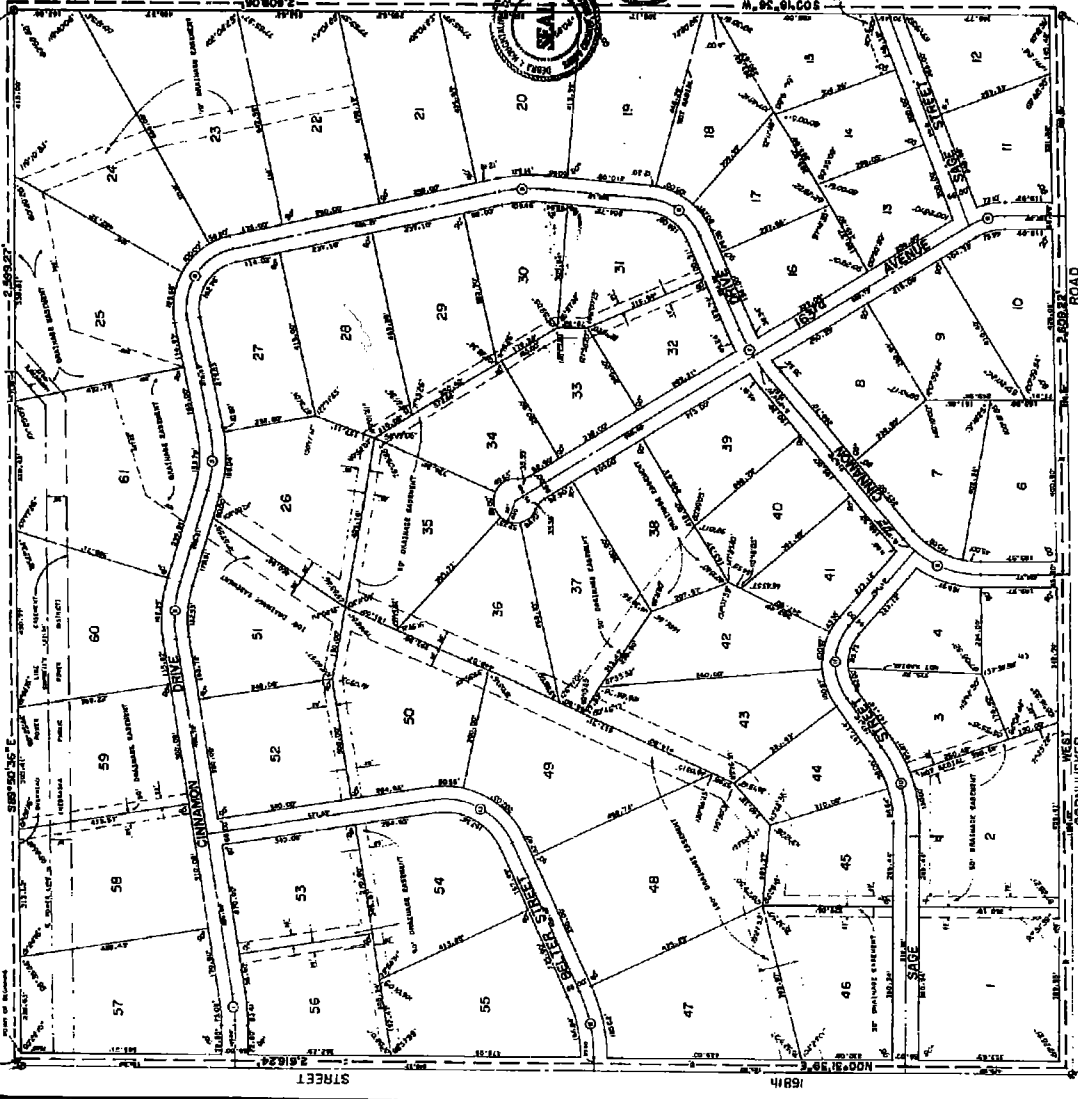
92-04252

NEBRASKA
COUNTY OF SHERIDAN
PLAT NO. 11442
RECORDED IN BOOK 11442 PAGE 11442

92-04252
CINNAMON ACRES
BEING A REPLAY OF THE SOUTHWEST QUARTER OF SECTION 22,
T. 14 N., R. 31 E., OF THE 6TH P.M., SARRY CO., NEBRASKA,
LOTS 1 THRU 61

CINNAMON ACRES

BEING A REPLAY OF THE SOUTHWEST QUARTER OF SECTION 22,
T. 14 N., R. 31 E., OF THE 6TH P.M., SARRY CO., NEBRASKA,
LOTS 1 THRU 61



STATE OF NEBRASKA
COUNTY OF SHERIDAN
PLAT NO. 11442
RECORDED IN BOOK 11442 PAGE 11442

Min-Belle Dandy, auto

STATE OF NEBRASKA
COUNTY OF SHERIDAN
PLAT NO. 11442
RECORDED IN BOOK 11442 PAGE 11442

STATE OF NEBRASKA
COUNTY OF SHERIDAN
PLAT NO. 11442
RECORDED IN BOOK 11442 PAGE 11442

STATE OF NEBRASKA
COUNTY OF SHERIDAN
PLAT NO. 11442
RECORDED IN BOOK 11442 PAGE 11442

STATE OF NEBRASKA
COUNTY OF SHERIDAN
PLAT NO. 11442
RECORDED IN BOOK 11442 PAGE 11442

STATE OF NEBRASKA
COUNTY OF SHERIDAN
PLAT NO. 11442
RECORDED IN BOOK 11442 PAGE 11442

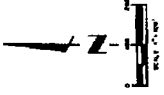
STATE OF NEBRASKA
COUNTY OF SHERIDAN
PLAT NO. 11442
RECORDED IN BOOK 11442 PAGE 11442

STATE OF NEBRASKA
COUNTY OF SHERIDAN
PLAT NO. 11442
RECORDED IN BOOK 11442 PAGE 11442

STATE OF NEBRASKA
COUNTY OF SHERIDAN
PLAT NO. 11442
RECORDED IN BOOK 11442 PAGE 11442

CENTERLINE CURVE DATA

STATION	CHORD BEARING	CHORD DISTANCE	ARC BEARING	ARC DISTANCE
1+00	N 89° 59' 59" E	100.00	89° 59' 59"	100.00
1+10	N 89° 59' 59" E	100.00	89° 59' 59"	100.00
1+20	N 89° 59' 59" E	100.00	89° 59' 59"	100.00
1+30	N 89° 59' 59" E	100.00	89° 59' 59"	100.00
1+40	N 89° 59' 59" E	100.00	89° 59' 59"	100.00
1+50	N 89° 59' 59" E	100.00	89° 59' 59"	100.00
1+60	N 89° 59' 59" E	100.00	89° 59' 59"	100.00
1+70	N 89° 59' 59" E	100.00	89° 59' 59"	100.00
1+80	N 89° 59' 59" E	100.00	89° 59' 59"	100.00
1+90	N 89° 59' 59" E	100.00	89° 59' 59"	100.00
2+00	N 89° 59' 59" E	100.00	89° 59' 59"	100.00
2+10	N 89° 59' 59" E	100.00	89° 59' 59"	100.00
2+20	N 89° 59' 59" E	100.00	89° 59' 59"	100.00
2+30	N 89° 59' 59" E	100.00	89° 59' 59"	100.00
2+40	N 89° 59' 59" E	100.00	89° 59' 59"	100.00
2+50	N 89° 59' 59" E	100.00	89° 59' 59"	100.00
2+60	N 89° 59' 59" E	100.00	89° 59' 59"	100.00
2+70	N 89° 59' 59" E	100.00	89° 59' 59"	100.00
2+80	N 89° 59' 59" E	100.00	89° 59' 59"	100.00
2+90	N 89° 59' 59" E	100.00	89° 59' 59"	100.00
3+00	N 89° 59' 59" E	100.00	89° 59' 59"	100.00
3+10	N 89° 59' 59" E	100.00	89° 59' 59"	100.00
3+20	N 89° 59' 59" E	100.00	89° 59' 59"	100.00
3+30	N 89° 59' 59" E	100.00	89° 59' 59"	100.00
3+40	N 89° 59' 59" E	100.00	89° 59' 59"	100.00
3+50	N 89° 59' 59" E	100.00	89° 59' 59"	100.00
3+60	N 89° 59' 59" E	100.00	89° 59' 59"	100.00
3+70	N 89° 59' 59" E	100.00	89° 59' 59"	100.00
3+80	N 89° 59' 59" E	100.00	89° 59' 59"	100.00
3+90	N 89° 59' 59" E	100.00	89° 59' 59"	100.00
4+00	N 89° 59' 59" E	100.00	89° 59' 59"	100.00
4+10	N 89° 59' 59" E	100.00	89° 59' 59"	100.00
4+20	N 89° 59' 59" E	100.00	89° 59' 59"	100.00
4+30	N 89° 59' 59" E	100.00	89° 59' 59"	100.00
4+40	N 89° 59' 59" E	100.00	89° 59' 59"	100.00
4+50	N 89° 59' 59" E	100.00	89° 59' 59"	100.00
4+60	N 89° 59' 59" E	100.00	89° 59' 59"	100.00
4+70	N 89° 59' 59" E	100.00	89° 59' 59"	100.00
4+80	N 89° 59' 59" E	100.00	89° 59' 59"	100.00
4+90	N 89° 59' 59" E	100.00	89° 59' 59"	100.00
5+00	N 89° 59' 59" E	100.00	89° 59' 59"	100.00
5+10	N 89° 59' 59" E	100.00	89° 59' 59"	100.00
5+20	N 89° 59' 59" E	100.00	89° 59' 59"	100.00
5+30	N 89° 59' 59" E	100.00	89° 59' 59"	100.00
5+40	N 89° 59' 59" E	100.00	89° 59' 59"	100.00
5+50	N 89° 59' 59" E	100.00	89° 59' 59"	100.00
5+60	N 89° 59' 59" E	100.00	89° 59' 59"	100.00
5+70	N 89° 59' 59" E	100.00	89° 59' 59"	100.00
5+80	N 89° 59' 59" E	100.00	89° 59' 59"	100.00
5+90	N 89° 59' 59" E	100.00	89° 59' 59"	100.00
6+00	N 89° 59' 59" E	100.00	89° 59' 59"	100.00
6+10	N 89° 59' 59" E	100.00	89° 59' 59"	100.00
6+20	N 89° 59' 59" E	100.00	89° 59' 59"	100.00
6+30	N 89° 59' 59" E	100.00	89° 59' 59"	100.00
6+40	N 89° 59' 59" E	100.00	89° 59' 59"	100.00
6+50	N 89° 59' 59" E	100.00	89° 59' 59"	100.00
6+60	N 89° 59' 59" E	100.00	89° 59' 59"	100.00
6+70	N 89° 59' 59" E	100.00	89° 59' 59"	100.00
6+80	N 89° 59' 59" E	100.00	89° 59' 59"	100.00
6+90	N 89° 59' 59" E	100.00	89° 59' 59"	100.00



92-04252

92-04252

92-04252

R W
W. Phil
FEE 46.00