



2093 284 DEED



08289 98 284-290

RICHARD N. TAKECHI
REGISTER OF DEEDS
DOUGLAS COUNTY, NE

98 JUN 25 PM 12:38

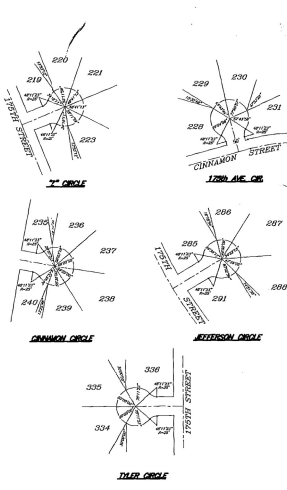
RECEIVED

h
THIS PAGE INCLUDED FOR INDEXING
PAGE DOWN FOR BALANCE OF INSTRUMENT

MI-06467
01-60000 Old
FEE _____ FB _____
B.P. *[Signature]* CO _____ *CO. MB*
DEL. *[Signature]* SEC. *dc* FY _____

CINNAMON CREEK 2ND ADDITION

LOTS 177 THROUGH 368, INCLUSIVE, AND OUTLOTS 2 THROUGH 5, INCLUSIVE, BEING A PLATTING OF PART OF THE SOUTHWEST QUARTER AND PART OF THE NORTHWEST QUARTER OF SECTION 9, C.T. 16R, TOWNSHIP 14 NORTH, RANGE 11 EAST OF THE 6TH P.M., DOUGLAS COUNTY, NEBRASKA

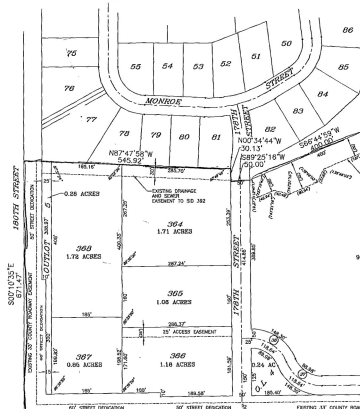


GENERATOR CURVE TABLE

CURVE	CHORD	ARC LENGTH	CHORD BEARING	CHORD BEARING	CHORD BEARING
C1	800.00	800.00	N00°00'00"W	S00°00'00"W	N00°00'00"W
C2	100.00	100.00	N00°00'00"W	S00°00'00"W	N00°00'00"W
C3	100.00	100.00	N00°00'00"W	S00°00'00"W	N00°00'00"W
C4	100.00	100.00	N00°00'00"W	S00°00'00"W	N00°00'00"W
C5	100.00	100.00	N00°00'00"W	S00°00'00"W	N00°00'00"W
C6	100.00	100.00	N00°00'00"W	S00°00'00"W	N00°00'00"W
C7	100.00	100.00	N00°00'00"W	S00°00'00"W	N00°00'00"W
C8	100.00	100.00	N00°00'00"W	S00°00'00"W	N00°00'00"W
C9	100.00	100.00	N00°00'00"W	S00°00'00"W	N00°00'00"W
C10	100.00	100.00	N00°00'00"W	S00°00'00"W	N00°00'00"W
C11	100.00	100.00	N00°00'00"W	S00°00'00"W	N00°00'00"W
C12	100.00	100.00	N00°00'00"W	S00°00'00"W	N00°00'00"W
C13	100.00	100.00	N00°00'00"W	S00°00'00"W	N00°00'00"W
C14	100.00	100.00	N00°00'00"W	S00°00'00"W	N00°00'00"W
C15	100.00	100.00	N00°00'00"W	S00°00'00"W	N00°00'00"W
C16	100.00	100.00	N00°00'00"W	S00°00'00"W	N00°00'00"W
C17	100.00	100.00	N00°00'00"W	S00°00'00"W	N00°00'00"W
C18	100.00	100.00	N00°00'00"W	S00°00'00"W	N00°00'00"W
C19	100.00	100.00	N00°00'00"W	S00°00'00"W	N00°00'00"W
C20	100.00	100.00	N00°00'00"W	S00°00'00"W	N00°00'00"W
C21	100.00	100.00	N00°00'00"W	S00°00'00"W	N00°00'00"W
C22	100.00	100.00	N00°00'00"W	S00°00'00"W	N00°00'00"W
C23	100.00	100.00	N00°00'00"W	S00°00'00"W	N00°00'00"W
C24	100.00	100.00	N00°00'00"W	S00°00'00"W	N00°00'00"W
C25	100.00	100.00	N00°00'00"W	S00°00'00"W	N00°00'00"W
C26	100.00	100.00	N00°00'00"W	S00°00'00"W	N00°00'00"W
C27	100.00	100.00	N00°00'00"W	S00°00'00"W	N00°00'00"W
C28	100.00	100.00	N00°00'00"W	S00°00'00"W	N00°00'00"W
C29	100.00	100.00	N00°00'00"W	S00°00'00"W	N00°00'00"W
C30	100.00	100.00	N00°00'00"W	S00°00'00"W	N00°00'00"W
C31	100.00	100.00	N00°00'00"W	S00°00'00"W	N00°00'00"W
C32	100.00	100.00	N00°00'00"W	S00°00'00"W	N00°00'00"W
C33	100.00	100.00	N00°00'00"W	S00°00'00"W	N00°00'00"W
C34	100.00	100.00	N00°00'00"W	S00°00'00"W	N00°00'00"W
C35	100.00	100.00	N00°00'00"W	S00°00'00"W	N00°00'00"W
C36	100.00	100.00	N00°00'00"W	S00°00'00"W	N00°00'00"W
C37	100.00	100.00	N00°00'00"W	S00°00'00"W	N00°00'00"W
C38	100.00	100.00	N00°00'00"W	S00°00'00"W	N00°00'00"W
C39	100.00	100.00	N00°00'00"W	S00°00'00"W	N00°00'00"W
C40	100.00	100.00	N00°00'00"W	S00°00'00"W	N00°00'00"W
C41	100.00	100.00	N00°00'00"W	S00°00'00"W	N00°00'00"W
C42	100.00	100.00	N00°00'00"W	S00°00'00"W	N00°00'00"W
C43	100.00	100.00	N00°00'00"W	S00°00'00"W	N00°00'00"W
C44	100.00	100.00	N00°00'00"W	S00°00'00"W	N00°00'00"W
C45	100.00	100.00	N00°00'00"W	S00°00'00"W	N00°00'00"W
C46	100.00	100.00	N00°00'00"W	S00°00'00"W	N00°00'00"W
C47	100.00	100.00	N00°00'00"W	S00°00'00"W	N00°00'00"W
C48	100.00	100.00	N00°00'00"W	S00°00'00"W	N00°00'00"W
C49	100.00	100.00	N00°00'00"W	S00°00'00"W	N00°00'00"W
C50	100.00	100.00	N00°00'00"W	S00°00'00"W	N00°00'00"W

NOTES

1. ALL DIMENSIONS ARE GIVEN IN DECIMAL FEET.
2. ALL LOTTERIES, VARIATIONS, ALIENS, CURVES, AND ARC DIMENSIONS ARE TO BE SHOWN.
3. ALL ALIENS ARE TO BE SHOWN.
4. ALL ALIENS ARE TO BE SHOWN.
5. ALL ALIENS ARE TO BE SHOWN.
6. ALL ALIENS ARE TO BE SHOWN.
7. ALL ALIENS ARE TO BE SHOWN.
8. ALL ALIENS ARE TO BE SHOWN.
9. ALL ALIENS ARE TO BE SHOWN.
10. ALL ALIENS ARE TO BE SHOWN.
11. ALL ALIENS ARE TO BE SHOWN.
12. ALL ALIENS ARE TO BE SHOWN.
13. ALL ALIENS ARE TO BE SHOWN.
14. ALL ALIENS ARE TO BE SHOWN.



LAND SURVEYOR'S CERTIFICATION

I, [Name], a duly Licensed Land Surveyor of the State of Nebraska, certify that I have personally surveyed the above described land and that I am the author of the same and that I have prepared this plan and certificate thereon in accordance with the laws and regulations of the State of Nebraska relating to the practice of the Surveying profession.

ACKNOWLEDGMENT OF DEEDS

State of Nebraska, County of Douglas, the day of [Date], 1997, I, [Name], County Clerk, do hereby certify that the foregoing instrument is a true and correct copy of the original as recorded in my office.

GENERAL NOTARY STATE OF NEBRASKA
DONALD M. PETERS
My Comm. Exp. Aug 22, 2000

SEALS: Douglas County Sealed, County Treasurer Seal, Official Seal, etc.