



Legal Description:

Inst #	Date	Type	Grantor	Grantee
34-625.	2/8/03	WD		
36-175.	2/8/03	WD	Isaac R Carpenter Laura nw	Bernhard Busckist
9-564		will's decree		
59-21		WD		
59-22		WD		
11-364		agmt.		
60-476.		WD		
36-419.				
114-48		ced		
114-51	7/11/03	WD	to August F R Sohl	Laura L Sohl
53-66	2/18/0	order.		
97116677	8/14/07	WD	Laura Sohl widow.	to same as tr Laura Sohl Trust
10022270	6/14/02	trd	Merlin Brugmann tr Laura Sohl	Merlin Brugmann
100223467	6/14/02	ced.	Merlin Brugmann. Barbara A nw.	tr of " " " rev trust 1/2
100223468	6/14/02	ced.	" "	Barbara A Brugmann tr " " " rev trust
100409003	3/14/04	Ease.	US 70, 71	
10040458	3/14/04	trd	Merline Brugmann tr. of Rev trust 1/2 int Barbara A " tr Barbara Brugmann	rev trust 1/2 Cheyenne County Est
100436432	9/21/04	flat	Cheyenne County Est	

# NUMERICAL INDEX

# SARDY COUNTY, NEBRASKA

OWNER	SECTION	TOWNSHIP	RANGE		MERIDIAN		ANGLE		BEARING	
			T. 27 S.	R. 10 W.	N. 12 E.	S. 12 E.	S. 12 E.	N. 12 E.	S. 12 E.	N. 12 E.
D. M. Rasmussen Hudson Road	27	27	34	34	122	122	122	122	122	122
M. W. Rasmussen Hudson Road	27	27	34	34	122	122	122	122	122	122
M. W. Rasmussen Hudson Road	27	27	34	34	122	122	122	122	122	122
M. W. Rasmussen Hudson Road	27	27	34	34	122	122	122	122	122	122
M. W. Rasmussen Hudson Road	27	27	34	34	122	122	122	122	122	122
M. W. Rasmussen Hudson Road	27	27	34	34	122	122	122	122	122	122
M. W. Rasmussen Hudson Road	27	27	34	34	122	122	122	122	122	122
M. W. Rasmussen Hudson Road	27	27	34	34	122	122	122	122	122	122
M. W. Rasmussen Hudson Road	27	27	34	34	122	122	122	122	122	122
M. W. Rasmussen Hudson Road	27	27	34	34	122	122	122	122	122	122

DATE: 12/12/2011 BY: [Signature]

NO.	ACRES	OWNER	ADDITION	REMARKS
1	160	D. M. Rasmussen		
2	160	M. W. Rasmussen		
3	160	M. W. Rasmussen		
4	160	M. W. Rasmussen		
5	160	M. W. Rasmussen		
6	160	M. W. Rasmussen		
7	160	M. W. Rasmussen		
8	160	M. W. Rasmussen		
9	160	M. W. Rasmussen		
10	160	M. W. Rasmussen		
11	160	M. W. Rasmussen		
12	160	M. W. Rasmussen		
13	160	M. W. Rasmussen		
14	160	M. W. Rasmussen		
15	160	M. W. Rasmussen		
16	160	M. W. Rasmussen		
17	160	M. W. Rasmussen		
18	160	M. W. Rasmussen		
19	160	M. W. Rasmussen		
20	160	M. W. Rasmussen		
21	160	M. W. Rasmussen		
22	160	M. W. Rasmussen		
23	160	M. W. Rasmussen		
24	160	M. W. Rasmussen		
25	160	M. W. Rasmussen		
26	160	M. W. Rasmussen		
27	160	M. W. Rasmussen		
28	160	M. W. Rasmussen		
29	160	M. W. Rasmussen		
30	160	M. W. Rasmussen		
31	160	M. W. Rasmussen		
32	160	M. W. Rasmussen		
33	160	M. W. Rasmussen		
34	160	M. W. Rasmussen		
35	160	M. W. Rasmussen		
36	160	M. W. Rasmussen		
37	160	M. W. Rasmussen		
38	160	M. W. Rasmussen		
39	160	M. W. Rasmussen		
40	160	M. W. Rasmussen		
41	160	M. W. Rasmussen		
42	160	M. W. Rasmussen		
43	160	M. W. Rasmussen		
44	160	M. W. Rasmussen		
45	160	M. W. Rasmussen		
46	160	M. W. Rasmussen		
47	160	M. W. Rasmussen		
48	160	M. W. Rasmussen		
49	160	M. W. Rasmussen		
50	160	M. W. Rasmussen		

NUMERICAL INDEX

SARPY COUNTY, NEBRASKA.

Section 32 Township 11 Range 11

OWNER	ACRES	SECTION	TOWNSHIP	RANGE	1/4	2/4	3/4	4/4
Peter Hendrickson & wife	80	11	11	11	1	1	1	1
John Jones	80	11	11	11	2	2	2	2
John Jones	80	11	11	11	3	3	3	3
John Jones	80	11	11	11	4	4	4	4
John Jones	80	11	11	11	5	5	5	5

OWNER	ACRES	SECTION	TOWNSHIP	RANGE	1/4	2/4	3/4	4/4
John Jones	80	11	11	11	1	1	1	1
John Jones	80	11	11	11	2	2	2	2
John Jones	80	11	11	11	3	3	3	3
John Jones	80	11	11	11	4	4	4	4
John Jones	80	11	11	11	5	5	5	5



LOT NOS. LOT NOS. LOT NOS. LOT NOS.  
 NE 1/4 NE 1/4 NW 1/4 NE 1/4 NW 1/4 SE 1/4 NE 1/4 SW 1/4 NE 1/4 SW 1/4 NW 1/4 SE 1/4 NW 1/4  
 TIMES-Perillion, Nebraska

SEC. 27 TWP. 14 R. 11  
 SARPY COUNTY NEBRASKA 414

DATE	GRANTOR	GRANTEE	WHD OR INSTR	RECORD		QUARTERS				ACRES	REMARKS	
				BOOK	PAGE	N.E. QUARTER	N.W. QUARTER	S.W. QUARTER	S.E. QUARTER			
	Jennie Stormer	Anthony Branchi & wif	X.C.	W	577					34	Pl. 88	
	Anthony Branchi & wif	Jennie Stormer	Mtg.	X	351					34	Can 37-610	
	Williams & Quasbit & wif	Building Loan of G.W. Clarke	Mtg.	X	431	1/2					Can 32-238	
	Anthony Branchi & wif	Thomas E. Dredhill	Mtg.	X	523			1	4	80	Can 35-351	
	Anthony Branchi	Anthony Branchi	W.D.	45	574				2,3			
	Chas. M. Johnson & wif	F. L. Hald	Agreement	7	521		3/4					
	Louis Branchi et al	Landers Lumber Co.	Mtg.	33	109		3/4				Can 45-101	
	A. F. Morrison	Whom it May Concern	Off.	5	76		3/4	1/2				
	Rebs Hand	Whom it May Concern	Off.	5	157		3/4					
	J. G. Sibbons & wif	Chas. M. Johnson et al	Mtg.	7	472		3/4			80	Can 38-11	
	Charles M. Johnson & wif	Joseph A. Sibbons	W.D.	50	571		3/4			80		
	Thomas E. Dredhill	Anthony E. Branchi	Rel.	35	251			1	4			
	Anthony E. Branchi & wif	Lincoln Joint Stock Land Lk	Mtg.	35	252			1/2	1/2		Part Rel 45-206 Part Can 42-349	
	Loa Branchi Sharples et al	Minnie Branchi	Rel.	51	674			1/2	3/4	1/2	3/4	Rel 45-251 Part Can. 42-349
	Minnie Branchi et al	Lincoln Joint Stock Land Lk	Mtg.	33	601				3/4	3/4		
	United States	D. Lebetin & Bucking Hand	C. Pat.	51	638				3/4	3/4		
	Jennie Stormer	Anthony Branchi et al	Rel.	37	610					3/4		
	Joseph G. Sibbons & wif	United States Trust Co.	Mtg.	33	627		3/4				Can 42-629	
	Leonard G. Johnson	J. G. Sibbons et al	Rel.	38	11		3/4					
	Bladys Branchi	Minnie Branchi	Rel.	53	641			1/2	3/4	1/2	3/4	Can 42-449 Can 42-350 Can m Margin
	Minnie Branchi	W. E. Shankley	and Mtg.	41	227			1/2	3/4	1/2	3/4	of 33-627 of 35-252 of 33-601
	J. G. Sibbons & wif	Emma Claussen	Mtg.	40	197		3/4					
	United States Trust Co.	Joseph G. Sibbons & wif	Rel.	42	261		3/4					
	Lincoln Joint Stock Land Lk	Anthony Branchi et al	Rel.	42	249			1/2				
	Lincoln Joint Stock Land Lk	Minnie Branchi et al	Rel.	42	349					3/4		
	W. E. Shankley	Lincoln Joint Stock Land Lk	Rel.	42	350			1/2	3/4	1/2	3/4	Part Rel 45-207 Rel 45-252
	Minnie Branchi	Lincoln Joint Stock Land Lk	Mtg.	42	351			1/2				
	Minnie Branchi	Lincoln Joint Stock Land Lk	Mtg.	42	352							



NE 1/4 NE 1/4 \_\_\_\_\_ NE 1/4 NW 1/4 \_\_\_\_\_ NE 1/4 SW 1/4 \_\_\_\_\_ NE 1/4 SE 1/4 \_\_\_\_\_  
 NW 1/4 NE 1/4 \_\_\_\_\_ NW 1/4 NW 1/4 \_\_\_\_\_ NW 1/4 SW 1/4 \_\_\_\_\_ NW 1/4 SE 1/4 \_\_\_\_\_  
 SW 1/4 NE 1/4 \_\_\_\_\_ SW 1/4 NW 1/4 \_\_\_\_\_ SW 1/4 SW 1/4 \_\_\_\_\_ SW 1/4 SE 1/4 \_\_\_\_\_  
 SE 1/4 NE 1/4 \_\_\_\_\_ SE 1/4 NW 1/4 \_\_\_\_\_ SE 1/4 SW 1/4 \_\_\_\_\_ SE 1/4 SE 1/4 \_\_\_\_\_

SEC. 27 TWP. 14 R. 11  
 SARY COUNTY  
 NEBRASKA 416

Times-Popular, Nebraska

DATE	GRANTOR	GRANTEE	KIND OF INTEREST	RECORD		QUARTERS				ACRES	REMARKS
				BOOK	PAGE	N.E. QUARTER	N.W. QUARTER	S.W. QUARTER	S.E. QUARTER		
	Dr. A.C. Kilsaback	Whom it May Concern	Gift	9	65			1 2 3 4	1 2 3 4		
	Lincolnville State Land Bank	Clara Johnson	Gift	57	161				1 2 3 4		
	Federal Land Bank	Maudie B. Thomas et al	Rel	45	235			1 2 3 4			of 45-19
	Fred Martens	Minnie Leonard et al	Rel	45	235			1 2 3 4			of 36-443
	State Land Commissioner	Maudie B. Thomas et al	Rel	45	236			1 2 3 4			of 45-21
	Lincolnville State Land Bank	Minnie Leonard et al	Rel	45	251				3 4	3 4	of 53-601
	Lincolnville State Land Bank	Minnie Leonard et al	Rel	45	252			1 2			of 42-352
	Lincolnville State Land Bank	Henry T. & Geneva Johnson	W.D.	56	685			1 2 3 4			Assign 45-261
	Henry T. Johnson & w/f	Lincolnville State Land Bank	W.D.	45	252			1 2 3 4			Rel 45-274
	Lincolnville State Land Bank	Union Bank	Assign	45	261			1 2 3 4			of 45-252
	Henry T. Johnson	Henry T. Johnson & w/f	Rel	45	274			1 2 3 4			of 45-252
	Henry T. Johnson & w/f	John Johnson	Mtg	45	274			1 2 3 4			of 45-252
	Fredrick Busckiet & w/f	William Mary Busckiet	W.D.	57	175	1 2					Rel 47-613
	William Busckiet	Fredrick Busckiet & w/f	Rel	45	315	1 2					of 39-160
	William Busckiet & w/f	Rep. House of G. W. Clarke	Mtg	45	320	1 2					Can 46-201
	William Busckiet & w/f	John E. Stearns	Cont'd	7	340	1 2					
	Albert G. Gflog & w/f	Assign to Albert G. Gflog	Assign	7	340	1 2					
	Rep. House of G. W. Clarke	Federal Land Bank	Mtg	46	157	1 2 3 4					Can 52-149
	William Busckiet & w/f	William Busckiet et al	Rel	46	201	1 2					of 45-320
	Louisa Daemon	Albert G. Gflog	W.D.	57	290	1 2					Re-Record of 32-324
	In Matter of Estate of	William J. Eichner	W.D.	58	357	1 2					
	Fredrick Busckiet & w/f	Louisa W. Bianchi, et al	W.D.	59	264		1 4				
	Martha King & h/b	Martha King	W.D.	59	21		1 2				
	Henry T. Johnson & w/f	Bernhard Busckiet & w/f	W.D.	59	22		1 2				
	Clara Johnson & w/f	Telephone Telegraph Co. of Neb.	W.D.	70	345			1 2 3 4			Assign Mar 27-8
	John Johnson	Telephone Telegraph Co. of Neb.	W.D.	70	347			1 2 3 4			Assign Mar 27-8
	Henry T. Johnson & w/f	Telephone Telegraph Co. of Neb.	W.D.	70	352			1 2 3 4			Assign Mar 27-8
	Maggie Busckiet	Henry T. Johnson & w/f	Rel	47	613			1 2 3 4			of 45-274
	Clara Johnson	Telephone Telegraph Co. of Neb.	W.D.	57	560			3			
	S.C. Kilsaback, M.D.	Ella L. Wandborg	Mtg	48	583		1 2				Rel 49-471
	Ella L. Wandborg	Henry T. Johnson	Rel	47	348			1 4	2 3		
	Maggie Busckiet	Whom it May Concern	Gift	47	364			1 2			
	Clara Johnson & w/f	Maggie Busckiet	Rel	49	491			1 2			of 48-583
	In Matter of Estate of	William King	W.D.	60	476			1 2			
	Federal Land Bank of Omaha	Clara C. Johnson	W.D.	62	466				1 2 3 4		
		Henry T. Johnson, et al	Rel	48	98			1 2 3 4			
		Louisa W. Bianchi, et al	Rel	50	571			3 4			of 45-43



LOT NOS. *Deaf road* LOT NOS.

LOT NOS.

LOT NOS.

SEC. *27* TWP. *14* RING. *11*

SARPY COUNTY  
NEBRASKA

NE 1/4 NE 1/4  
NW 1/4 NE 1/4  
SW 1/4 NE 1/4  
SE 1/4 NE 1/4

NE 1/4 NW 1/4  
NW 1/4 NW 1/4  
SW 1/4 NW 1/4  
SE 1/4 NW 1/4

NE 1/4 SW 1/4  
NW 1/4 SW 1/4  
SW 1/4 SW 1/4  
SE 1/4 SW 1/4

NE 1/4 SE 1/4  
NW 1/4 SE 1/4  
SW 1/4 SE 1/4  
SE 1/4 SE 1/4

TIMES-Papillon, Nebraska

GRANTOR GRANTEE KIND OF INSTRUMENT RECORD N.E. QUARTER N.W. QUARTER S.W. QUARTER S.E. QUARTER ACRES REMARKS DATE

GRANTOR	GRANTEE	KIND OF INSTRUMENT	RECORD	N.E. QUARTER	N.W. QUARTER	S.W. QUARTER	S.E. QUARTER	ACRES	REMARKS	DATE
Federal Land Bank	Estate of Louis W. Brinski	W.D.	12 135					3 4		
William C. Donchi	Albert G. Pfling & wife	W.D.	62 227					3 4		
Federal Land Bank	Albert G. Pfling, et al	W.D.	57 149	1 2 3 4					of 46-157	
Albert G. Pfling, et al	W. N. Bankley	W.D.	72 469					3 4		
Albert G. Pfling, et al	Frank G. Pfling, et al	W.D.	64 519					3 4		
Albert G. Pfling, et al	Frank G. Pfling	W.D.	64 520	1 2 3 4						
Roscoe Johnson, et al	Serena Johnson	W.D.	68 278					1 2 3 4		Under 1/2 Int
Allen Kelly, et al	Frank G. Pfling	W.D.	76 227	1 2 3 4						
Laura M. Foxover, et al	State of Nebraska	W.D.	87 145							
Hans C. Foxover, et al	Federal Land Bank of Omaha	Mtg.	117 662				1 2 3 4			Feb 184-318
Serena Johnson, et al	State of Nebraska	W.D.	89 364					1.51 ac		
Serena Johnson, et al	Highland Corp.	W.D.	69 562					1 2 3 4		Feb 179-302
Highland Corporation	Serena Johnson, et al	Mtg.	133 223					1 2 3 4		Feb 157-525
Highland Corporation	Metz Industries	W.D.	108 650					1 2 3 4		
By the Matter of Estate of the Matter of Estate	William Spring	W.D.	30 419					1 2		
Metz Industries, Inc.	Hans C. Foxover	W.D.	110 370					1 2 3 4		
Southroads Corporation	Southroads Corporation	Mtg.	134 698					1 2 3 4		Feb 179-57 Feb 159-257
Ella S. Foxover, et al	State of Nebraska	W.D.	111 559							.35 ac
Janice D. Spring	August F. R. Sohl & wife	W.D.	114 48					1 2		
August F. R. Sohl & wife	August F. R. Sohl & wife	W.D.	114 151					1 2		
Nebraska, State of	Foxover, Ella S. et al	W.D.	104 236					1 3 4		
Foxover, Roseann E. et al	American Telephone & Telegraph Co.	W.D.	35 542					1 2 3 4		Assign 115-578 8-26-64
Commissioners, Bd of County	Whom it May Concern	W.D.	35 577					2 3 4		8-31-65
Metz Industries, Inc.	Southroads Corporation	W.D.	159 257					9.88		9-27-65
Johnson, Serena & Ralph	Highland Corporation	W.D.	159 505					9.88		10-6-65
Southroads Corporation	Sanitary Improvement Dist.	W.D.	124 421					9.88		10-22-65
Continental Western Corp.	Metz Industries, Inc.	W.D.	179 59					1 2 3 4		of 134-698 6-4-68
Continental Western Corp.	Southroads Corp.	W.D.	137 106					1 2 3 4		T.L. 2 6-4-68
Southroads Corporation	Continental Western Corp.	W.D.	137 117					1 2 3 4		T.L. 2 6-6-68
Continental Western Corp.	Whom it May Concern	W.D.	140 141					1 2 3 4		157-106 6-12-68
Payl, Lawrence (as it is)	Whom it May Concern	W.D.	140 188					1 2 3 4		Assignment to Brown 6-25-68
Continental Western Corp.	Southwest Bank of Omaha	Mtg.	179 303					1 2 3 4		T.L. 2 6-25-68
Johnson, Serena & Ralph	Highland Corporation	W.D.	179 302					1 2 3 4		of 133-383 6-25-68

Proofed

NE1/4NW1/4	NE1/4NW1/4	NE1/4SW1/4	NE1/4SE1/4
NW1/4NE1/4	NW1/4NW1/4	NW1/4SW1/4	NW1/4SE1/4
SW1/4NE1/4	SW1/4NW1/4	SW1/4SW1/4	SW1/4SE1/4
SE1/4NE1/4	SE1/4NW1/4	SE1/4SW1/4	SE1/4SE1/4

SEC 27 TWP 14 R16 L1

SARPY COUNTY NEBRASKA 418

1885-Papillon, Nebraska

DATE	GRANTOR	GRANTEE	KIND OF INSTRUMENT	RECORD	QUARTERS				ADDRESS	REMARKS
					N.E.	N.W.	S.W.	S.E.		
11-1-68	Southwest Bank of Omaha	John Hancock Mut. Life Ins. Co.	181	661						Rel. 190-308
4-13-69	Fidelity Bank of Omaha	Rohwer, Harold + Eula J.	Rel.	184	318					of 171-363
5-2-69	Baker, Eula J. Rohwer et al	Juwenson, J. R.	W.D.	141	137					of 117-662
5-2-69	Juwenson, J. R.	Baker, Eula J. et al	W.D.	184	510					144 1/2
11-28-50	Am. Tele. & Telegraph Co. of Neb.	Am. Telephone & Telegraph Co.	W.D.	70	4					of 190-1108
4-24-70	Rohwer, Ralph et al	Juwenson, J. R.	W.D.	143	170					of 190-1108
11-27-70	Baker, Eula J. et al	Baker, Eula J. et al	Agree.	43	459					of 190-1108
12-15-70	Juwenson, J. R. + wife	Sarpy County of	W.D.	145	2187					66 Homelway
12-17-70	Juwenson, J. R. + wife	Antilles Corp.	W.D.	145	2145					144 1/2
12-17-70	Rohwer (Baker) Eula J. et al	Juwenson, J. R.	W.D.	189	2325					of 184-510
12-17-70	Antilles Corp.	Omaha Natl. Bank	W.D.	189	2322					of 190-297
12-17-70	Antilles Corp.	Omaha Natl. Bank	W.D.	189	2327					of 190-297
2-8-71	Antilles Corp.	Cassman, F. S. atty. trustee	W.D.	190	275					of 190-775
2-9-71	American Tele. & Telegraph Co.	Whom It May Concern	W.D.	44	66					of 190-775
3-17-71	Commissioners Sarpy County	Whom It May Concern	W.D.	44	127					of 190-1136
4-2-71	Nebraska State of	Sarpy County of	W.D.	44	157					Dec. City, Rel.
4-6-71	Antilles Corp.	Midlands Corp.	W.D.	190	761					of 88-04615
4-6-71	Cassman, F. S. atty. trustee	Antilles Corp.	W.D.	190	762					of 190-275
4-7-71	Omaha National Bank	Antilles Corp.	W.D.	190	775					of 187-2327
4-9-71	Neb. State of Dept of Roads	Antilles Corporation	W.D.	146	848					358±
5-25-71	Antilles Corporation	Omaha Public Power Dist.	W.D.	44	256					24 wide
5-28-71	Omaha National Bank	Antilles Corp.	W.D.	190	1370					of 189-2327
5-28-71	Cassman, F. S. atty. trustee	Antilles Corp.	W.D.	190	1371					of 190-275
5-28-71	Antilles Corporation	Happy Chief of Winoma Inc.	W.D.	146	926					of 40 ann.
6-1-71	Antilles Corporation	Cassman, F. S. atty. trustee	W.D.	190	1377					of 191-2088
6-2-71	Antilles Corporation	Omaha Public Power Dist.	W.D.	44	269					of 191-2088
6-4-71	Cassman, F. S. atty. trustee	Antilles Corp.	W.D.	190	1436					of 190-275
6-28-71	Happy Chief of Winoma Inc.	Antilles Corp.	W.D.	146	1185					of 190-275
6-30-71	Antilles Corp.	Sanitary Imp. Dist. #51	W.D.	44	322					of 191-2088
6-30-71	Antilles Corp.	Sanitary Imp. Dist. #51	W.D.	44	321					of 191-2088
7-8-71	Antilles Corp.	American Oil Company	W.D.	44	330					of 191-2088
7-12-71	Antilles Corp.	Happy Chief of Winoma Inc.	W.D.	146	1357					(Corrected)
7-13-71	Happy Chief of Winoma Inc.	Omaha Pub. Power Dist. et al	W.D.	44	340					of 191-2088
7-15-71	Happy Chief of Winoma Inc.	Omaha Natl. Bank	W.D.	190	2031					of 205-2667
7-15-71	Happy Chief of Winoma Inc.	Omaha Natl. Bank	W.D.	190	2032					of 205-2667
7-23-71	Antilles Corp.	Midland Bank of	W.D.	190	2156					of 191-2088
7-23-71	Antilles Corp.	Midland Bank of	W.D.	190	2157					of 191-2088
7-23-71	Antilles Corp.	Midland Bank of	W.D.	3	36					of 191-2088
7-30-71	Sanitary Imp. Dist. #32	Continental Western Corp.	W.D.	146	1489					of 191-2088
8-10-71	Rohwer, Eula J. Baker et al	Juwenson, J. R.	W.D.	190	2408					of 184-510
8-10-71	Antilles Corp. et al	Sanitary Improve Dist. #51	W.D.	44	297					of 190-1377
9-2-71	Cassman, F. S. atty. trustee	Antilles Corp.	W.D.	190	2704					of 190-1377
9-10-71	Antilles Corp. et al	Omaha National Bank	W.D.	190	2837					of 190-1377
9-10-71	Antilles Corp. et al	Omaha National Bank	W.D.	190	2838					of 190-1377
9-15-71	Omaha Natl. Bank	Antilles Corp.	W.D.	190	2897					of 190-1377
10-21-71	Antilles Corporation	Midlands Corporation	W.D.	3	74					of 88-04616
10-21-71	Antilles Corporation	Midlands Corporation	W.D.	190	3427					of 190-761

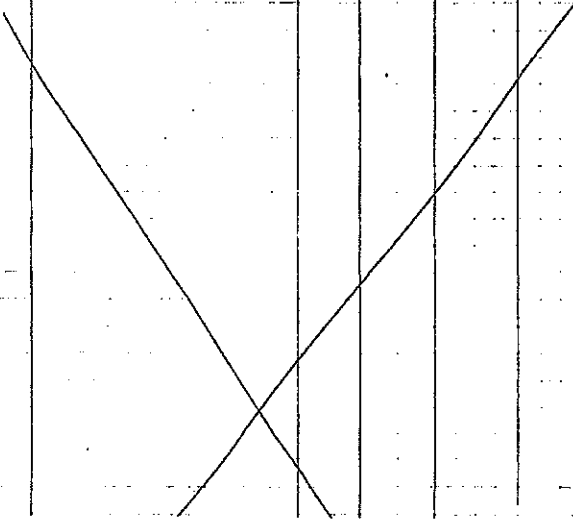


LOT NOS. LOT NOS. LOT NOS. LOT NOS.

NE1/4NE1/4 NW1/4NE1/4 SW1/4NE1/4 SE1/4NE1/4  
 NE1/4NW1/4 NW1/4NW1/4 SW1/4NW1/4 SE1/4NW1/4  
 NE1/4SE1/4 NW1/4SE1/4 SW1/4SE1/4 SE1/4SE1/4

SEC. 29 TWP. 14 RANG. 11  
 SARY COUNTY, NEBRASKA  
 420

DATE	GRANTOR	GRANTEE	KIND OF INSTRUMENT	RECORD		H. Q. QUARTER				ACRES	REMARKS
				BOOK	PAGE	N.E. 1/4	N.W. 1/4	S.E. 1/4	S.W. 1/4		
5-22-75	Antilles Corporation	U. S. of American Nat. B. Co.	U. S.	150	884						
6-22-75	Metro Nat. State Bonds	Antilles Corp. et al.	U. S.	194	184						
6-22-75	Cassman, F. S. Atty. Gen. et al.	Continental Western Corp.	U. S.	194	144						
5-29-75	Cassman, F. S. Atty. Gen. et al.	Continental Western Corp.	U. S.	194	144						
7-3-75	Cassman, F. S. Atty. Gen. et al.	Continental Western Corp.	U. S.	194	144						
7-8-75	Shippy, Harry, County	Metro Nat. State Bonds	U. S.	150	802						
7-10-75	District Court Clerk	Antilles Corp. et al.	U. S.	194	211						
7-21-75	Shippy, Harry, County	Antilles Corp. et al.	U. S.	150	802						
8-22-75	The Papillon Press	Whom it may concern	U. S.	48	457						
8-22-75	American Tel. & Tel. Co.	Northwestern Bell Tel. Co.	U. S.	150	1788						
8-27-75	Cassman, F. S. Atty. Gen. et al.	American Savings Co.	U. S.	150	1323						
9-9-75	United States of America	Continental Western Corp.	U. S.	194	491						
9-17-75	U. S. of America (Exec. Atty.)	Antilles Corp. et al.	U. S.	194	512						
11-12-75	Continental Western Corp.	Shippy, Harry, County	U. S.	194	211						
3-10-76	Cro-Mag, Inc.	American Savings Co.	U. S.	151	505						
3-22-76	Midland Corporation	American Savings Co.	U. S.	175	1022						
3-22-76	Antilles Corporation	American Savings Co.	U. S.	157	652						
6-2-76	American Savings Co.	The Way Home, Inc.	U. S.	151	284						
11-13-76	H. Way Home, Inc.	American Savings Co.	U. S.	151	274						
1-24-77	American Savings Company	Cro-Mag, Inc.	U. S.	52	53						
2-18-77	K. H. M. M. M. Co.	American Savings Co.	U. S.	4	34						
2-25-77	P. H. M. M. M. Co.	American Savings Co.	U. S.	4	30						
3-16-77	Continental Western Corp.	Whom it may concern	U. S.	194	110						
3-16-77	Continental Western Corp.	Whom it may concern	U. S.	194	110						
3-16-77	Continental Western Corp.	Whom it may concern	U. S.	194	110						
3-16-77	Continental Western Corp.	Whom it may concern	U. S.	194	110						
3-16-77	Continental Western Corp.	Whom it may concern	U. S.	194	110						
1-8-78	Cro-Mag, Inc.	American Sav. Co.	U. S.	153	142						
1-15-78	American Sav. Co.	Fischer, Thomas C. et al.	U. S.	51	41						
1-22-78	Shippy, Harry County	S. W. M. Inc.	U. S.	123	63						
1-25-78	S. W. M. Inc.	S. W. M. Investments	U. S.	153	142						
1-31-78	Bank of Millard	Antilles Corporation et al.	U. S.	52	63						
5-8-79	Cassman, F. S. Atty. Gen. et al.	Antilles Corporation	U. S.	194	211						
6-15-79	Cassman, F. S. Atty. Gen. et al.	Antilles Corp.	U. S.	194	211						
8-30-79	Fischer, Thomas C. et al.	American Savings Co.	U. S.	151	284						
8-30-79	American Savings Co.	Fischer, Thomas C. et al.	U. S.	151	284						
2-5-80	Shippy, Harry County	Whom it may concern	U. S.	53	66						
5-29-80	American Savings Co.	North Bond, Inc.	U. S.	53	305						
7-18-80	District Court Clerk	Antilles Corp. et al.	U. S.	194	211						
7-23-80	Shippy, Harry County	Bank of Millard	U. S.	153	142						
7-31-80	Shippy, Harry County	Bank of Millard	U. S.	194	211						
8-5-80	SW Investments	Whom it may concern	U. S.	7	127						
10-10-80	Fischer Nat. Bank and Sav.	Shippy, Harry County	U. S.	194	211						
12-21-80	American Savings Co.	American Investments, Inc.	U. S.	155	315						



LOT NOS.

LOT NOS.

LOT NOS.

LOT NOS.

SEC. 27 TWP. 14. RING. 11

SARPY COUNTY, NEBRASKA

NE1/4NE1/4
NW1/4NE1/4
SW1/4NE1/4
SE1/4NE1/4

NE1/4NW1/4
NW1/4NW1/4
SW1/4NW1/4
SE1/4NW1/4

NE1/4SW1/4
NW1/4SW1/4
SW1/4SW1/4
SE1/4SW1/4

NE1/4SE1/4
NW1/4SE1/4
SW1/4SE1/4
SE1/4SE1/4

Table with columns: GRANTOR, GRANTEE, KIND OF INSTRUMENT, RECORD (BOOK, PAGE), N.E. QUARTER, N.W. QUARTER, S.W. QUARTER, S.E. QUARTER, ACRES, REMARKS, DATE. Rows include entries from American Savings Co., Bank of Nebraska, Sarpy County Commissioner, and various individuals like Joseph E. Spreitzer and Riffel, Norman et al.

LOT NOS. LOT NOS. LOT NOS. LOT NOS.

NE 1/4 NE 1/4 \_\_\_\_\_ NE 1/4 NW 1/4 \_\_\_\_\_ NE 1/4 SW 1/4 \_\_\_\_\_ NE 1/4 SE 1/4 \_\_\_\_\_  
 NW 1/4 NE 1/4 \_\_\_\_\_ NW 1/4 NW 1/4 \_\_\_\_\_ NW 1/4 SW 1/4 \_\_\_\_\_ NW 1/4 SE 1/4 \_\_\_\_\_  
 SW 1/4 NE 1/4 \_\_\_\_\_ SW 1/4 NW 1/4 \_\_\_\_\_ SW 1/4 SW 1/4 \_\_\_\_\_ SW 1/4 SE 1/4 \_\_\_\_\_  
 SE 1/4 NE 1/4 \_\_\_\_\_ SE 1/4 NW 1/4 \_\_\_\_\_ SE 1/4 SW 1/4 \_\_\_\_\_ SE 1/4 SE 1/4 \_\_\_\_\_

SEC. 21 TWP. 14 R. 11

SARPY COUNTY  
NEBRASKA 422

DATE	GRANTOR	GRANTEES	KIND OF INSTRUMENT	RECORD		N.E. QUARTER				N.W. QUARTER				S.W. QUARTER				S.E. QUARTER				ACRES	REMARKS
				BOOK	PAGE	N.E.	N.W.	S.E.	S.W.	N.E.	N.W.	S.E.	S.W.	N.E.	N.W.	S.E.	S.W.	N.E.	N.W.	S.E.	S.W.		
12-2-87	Riffel, Norman D. & wife	First National Bank & Trust	1st Mort	60	2480																		
12-2-87	Riffel, Norman D. & wife	First National Bank & Trust	2nd Mort	206	11109																		
12-2-87	Riffel, Norman D. & wife	First National Bank & Trust	3rd Mort	60	2480																		
12-2-87	Riffel, Norman D. & wife	First National Bank & Trust	4th Mort	20	87																		
12-2-87	First Western Bank, Tr.	Riffel, Norman D. & wife	1st Mort	206	11119																		
12-2-87	First Western Bank, Tr.	Riffel, Norman D. & wife	2nd Mort	206	11120																		

1920  
1921  
1922  
1923  
1924  
1925  
1926  
1927  
1928  
1929  
1930  
1931  
1932  
1933  
1934  
1935  
1936  
1937  
1938  
1939  
1940

8 206-4372  
8 206-10358

# Numerical Land Index, Sarpy County, Nebraska

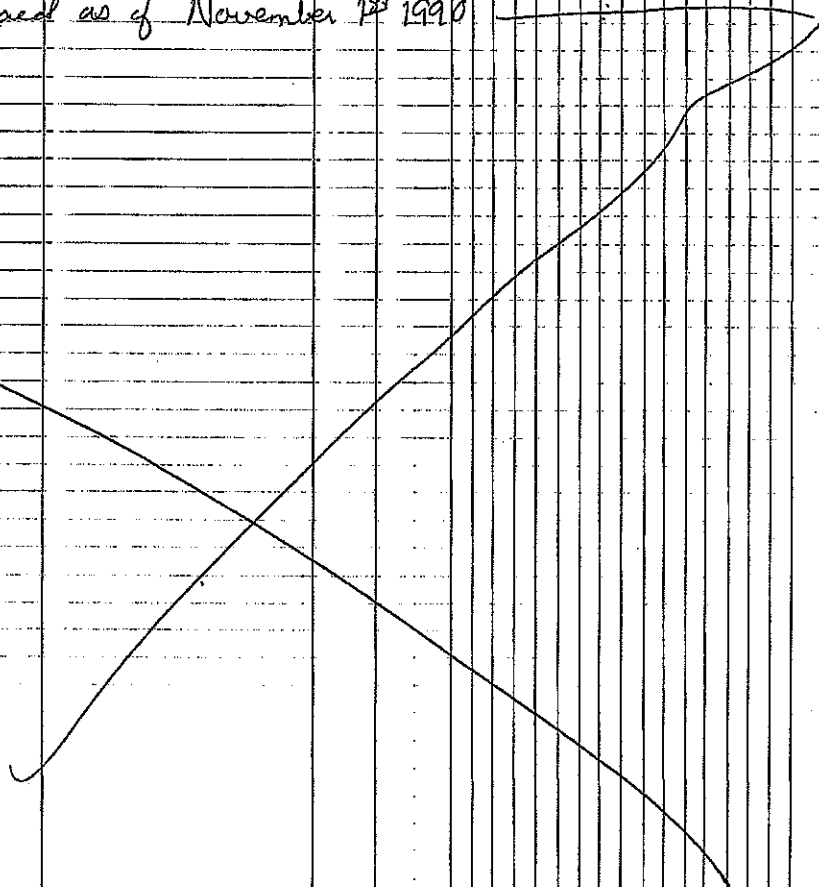
LOT NOS.	LOT NOS.	LOT NOS.	LOT NOS.
NE1/4NE1/4 _____	NE1/4NW1/4 _____	NE1/4SW1/4 _____	NE1/4SE1/4 _____
NW1/4NE1/4 _____	NW1/4NW1/4 _____	NW1/4SW1/4 _____	NW1/4SE1/4 _____
SW1/4NE1/4 _____	SW1/4NW1/4 _____	SW1/4SW1/4 _____	SW1/4SE1/4 _____
SE1/4NE1/4 _____	SE1/4NW1/4 _____	SE1/4SW1/4 _____	SE1/4SE1/4 _____

SEC. 37 TWP. 14 RNG. 11

SARPY COUNTY  
NEBRASKA 423

DATE	GRANTOR	GRANTEE	KIND OF INSTRUMENT	RECORD INSTRUMENT NUMBER	QUARTERS				ACRES	REMARKS
					N.E. QUARTER	N.W. QUARTER	S.W. QUARTER	S.E. QUARTER		
1-12-88	Hoffel, Jorman et al.	W. Central May, Co. Inc.	1st	88-2347						"Hoffel's List"
2-21-88	Spreitzer, Joseph E.	Boysen & Backlund	1st	88-2328						
2-21-88	Spreitzer, Joseph E.	Boysen & Backlund	1st	88-2329						
3-21-88	Spreitzer, Joseph E.	Boysen & Backlund	1st	88-2332						
3-22-88	First Nat. Bank, N.A. Omaha	Spreitzer, Joseph E.	1st	88-2357						of 17-81
3-23-88	First Nat. Bank, N.A. Omaha	Spreitzer, Joseph E.	1st	88-2341						of 204-1283
4-19-88	Midland Corp.	Antilow Corp.	Rel	88-0415						of 190-761
4-19-88	Midland Corp.	Antilow Corp.	Rel	88-0416						of 190-3407
7-17-88	Midland Timber, Inc.	Dively, Ronald L.	1st	88-0976						of 88-10208
2-24-88	Midland Timber, Inc.	Dively, Ronald L.	1st	88-10208						of 88-0986
9-12-88	Carlisle Insulation, Inc.	Dively, Ron + Ruth, Shop	1st	88-12492						of 89-13764
10-27-88	Homer, Lonette, Inc.	Welsh, Gay L., Trustee	WD	88-15648						(2550)
10-5-89	Carlisle Insulation, Inc.	R. D. Schroeder, 1103 S 30	1st	89-13764						of 88-12492
10-5-89	Dively, Ronald L. et al.	Carlisle State Bank	1st	89-12764						
10-5-89	Dively, Ronald L. et al.	Carlisle State Bank	1st	89-12764						
11-20-89	S.W.N. Partnership	University of N. Foundation	1st	89-16230						under 10-1762
11-20-89	S.W.N. Partnership	University of N. Foundation	1st	89-16231						Tr. 1001A (42)
1-2-90	Laramy, Inc.	First Nat. Bank of Omaha	1st	90-00103						
1-2-90	Laramy, Inc.	First Nat. Bank of Omaha	1st	90-00104						
1-2-90	Laramy, Inc.	First Nat. Bank of Omaha	1st	90-00103						
2-28-90	Laramy, Inc.	First Nat. Bank of Omaha	1st	90-00104						
4-6-90	Laramy, Inc.	First Nat. Bank of Omaha	1st	90-00104						
7-23-90	S.W.N.	University of N. Foundation	WD	90-10086						Tr. 90-104

Computers indexed as of November 1990

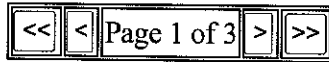


User = OMATITLE

Search Type Lands # Records Found 17

Search Criteria =Sec 27 Tns 14 Rng 11 Quarter - Quarter of the NW Quarter  
Images maybe DELAYED for viewing.

If the Image button says YES, but you get no image try again in a few hours.



Book Image Available

YES

Note: Loading may take a while because of file size.

NE NW SW SE NE NW SW SE NE NW SW SE NE NW SW SE

Instr # Image? Type Filed Date NE NW SW SE NE NW SW SE NE NW SW SE NE NW SW SE Lots Remarks

199716677  YES WD 1997-08-06 \* \* \* \* X X \* \* \* \* \* \* \* \* \* \* \* \* \* \* LAURA L SOHL TRUST

Grantor :SOHL LAURA L Grantee :SOHL LAURA L TR

200222270  YES TRD 2002-06-14 \* \* \* \* X X \* \* \* \* \* \* \* \* \* \* \* \*

Grantor :BRUGMANN MERLIN TR Grantee :BRUGMANN MERLIN

200223467  YES QCD 2002-06-24 \* \* \* \* X X \* \* \* \* \* \* \* \* \* \* \* \* \* \* MERLIN E BRUGMANN REVOCABLE TRUST UNDIVIDED 1/2 INT

Grantor :BRUGMANN MERLIN E ETAL Grantee :BRUGMANN MERLIN E TR

200223468  YES QCD 2002-06-24 \* \* \* \* X X \* \* \* \* \* \* \* \* \* \* \* \* \* \* BARBARA A BRUGMANN REVOCABLE TRUST UNDIVIDED 1/2 INT

Grantor :BRUGMANN MERLIN E ETAL Grantee :BRUGMANN BARBARA A TR

200353735  YES DOT 2003-09-22 \* \* \* \* X X \* \* \* \* \* \* \* \* \* \* \* \* \* \* BRUGMANN REVOCABLE TRUST

Grantor :BRUGMANN MERLIN TR ETAL Grantee :PINNACLE BANK ETAL

200406341  YES DOR 2004-02-25 \* \* \* \* X X \* \* \* \* \* \* \* \* \* \* \* \* \* \* 2003-53735

Grantor :PINNACLE BANK TR Grantee :MERLIN E BRUGMANN REV TRUST ETAL

200409003  YES EASE 2004-03-16 \* \* \* \* \* P \* \* \* \* \* \* \* \* \* \* \* \*

Grantor :CHEYENNE COUNTRY ESTATES LLC Grantee :METROPOLITAN UTILITIES DIST

200409458  YES TRD 2004-03-19 \* \* \* \* X X \* \* \* \* \* \* \* \* \* \* \* \* \* \* UNDIV 1/2 INT SEE INST FOR TRUST

Grantor :BRUGMANN MERLIN E TR ETAL Grantee :CHEYENNE COUNTRY ESTATES LLC

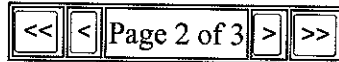


User = OMATITLE

Search Type Lands # Records Found 17

Search Criteria =Sec 27 Tns 14 Rng 11 Quarter - Quarter of the NW Quarter  
 Images maybe DELAYED for viewing.

If the Image button says YES, but you get no image try again in a few hours.



Book Image Available

YES

Note: Loading may take a while because of file size.

NE NW SW SE

Instr # Image? Type Filed Date NE NW SW SE NE NW SW SE NE NW SW SE NE NW SW SE Lots Remarks

200410085  YES DOT 2004-03-24 \* \* \* \* X X \* \* \* \* \* \* \* \* \* \*

Grantor :CHEYENNE COUNTRY ESTATES LLC Grantee :COMMERCIAL FED BANK ETAL

200415026  YES SID 2004-04-28 \* \* \* \* X X \* \* \* \* \* \* \* \* \* \*

CORR  
TO  
SHOW  
SID 255  
NOT 225  
1/10/05  
DH

Grantor :SID #255 Grantee :WHOM IT MAY CONCERN

200416336  YES EASE 2004-05-06 \* \* \* \* \* \* P \* \* \* \* \* \* \* \* \*

Grantor :PFLUG WILLIAM Grantee :METROPOLITAN UTILITIES DIST

200436432  YES PLAT 2004-09-21 \* \* \* \* X X \* \* \* \* \* \* \* \* \* \*

REPLAT  
PT NW  
1/4 27-  
14-11  
NKA  
LTS 1-71  
CHCOES

Grantor :CHEYENNE COUNTRY ESTATES LLC ETAL Grantee :WHOM IT MAY CONCERN

200720792  YES DEED 2007-07-12 \* \* \* \* \* \* X X \* \* \* \* \* \* \* \* \*

Grantor :PFLUG WILLIAM F Grantee :WELLS FARGO BANK TR

200729177  YES DEED 2007-09-21 \* \* \* \* \* \* X X \* \* \* \* \* \* \* \* \*

Grantor :WELLS FARGO BANK TR Grantee :PFLUG WILLIAM F

200829843  YES DEED 2008-10-30 \* \* \* \* \* \* P \* \* \* \* \* \* \* \* \*

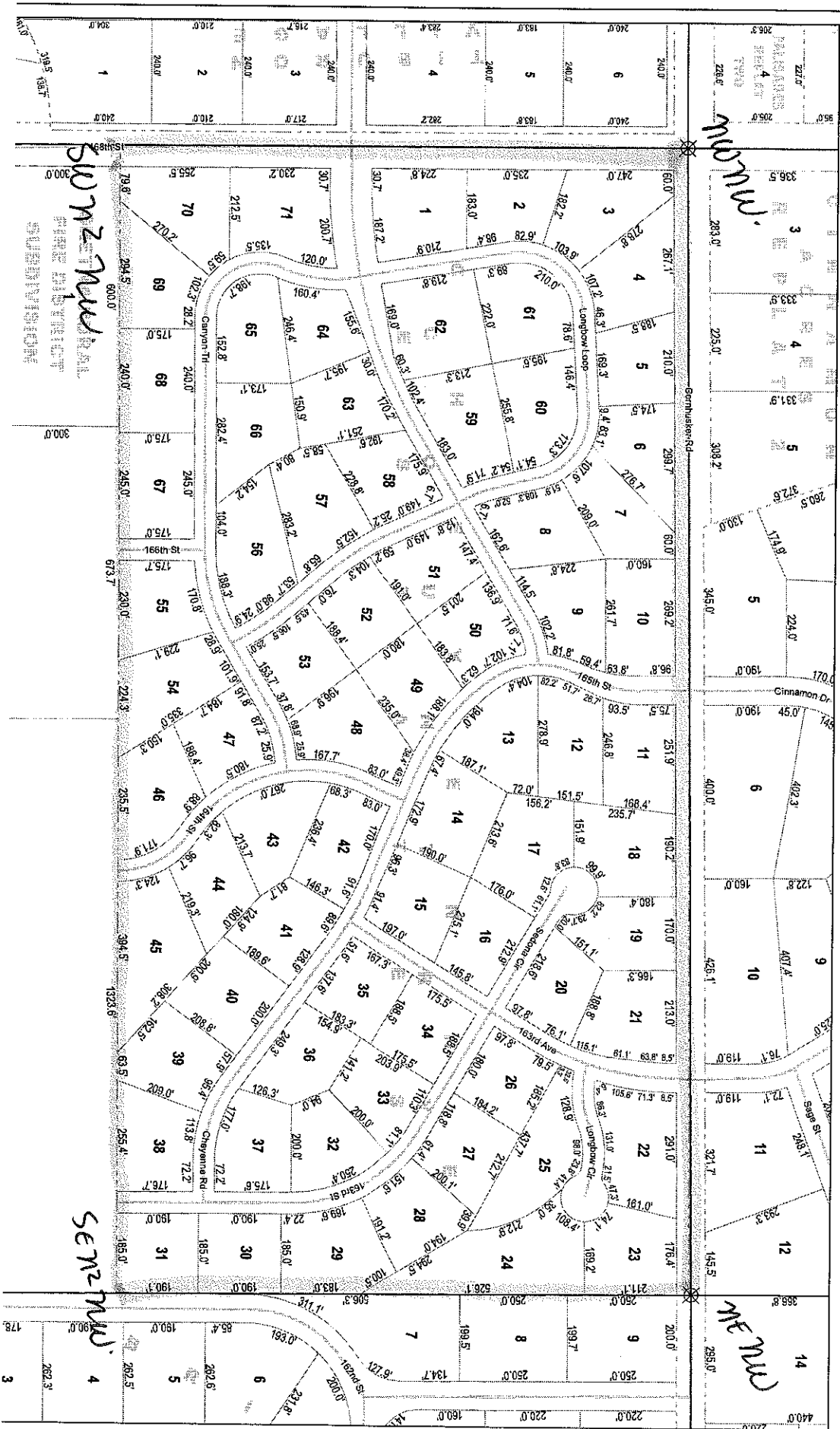
Grantor :PFLUG WILLIAM F Grantee :SARPY COUNTY OF

200829844  YES DEED 2008-10-30 \* \* \* \* \* \* P \* \* \* \* \* \* \* \* \*

Grantor :SARPY COUNTY OF Grantee :GRETNA RURAL FIRE DISTRICT

MO 27-14-11

1 inch = 200 feet



MOMMY

SUNZMUS

SENZMUS

MOMMY