

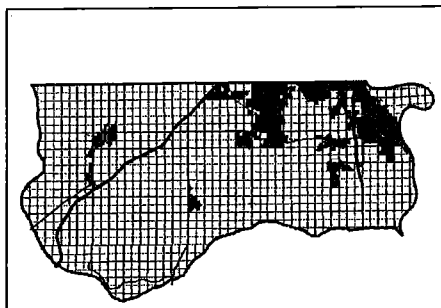


# NE1/4 SEC 26 T14N R13E

1 inch = 200 feet



SARPY COUNTY  
SURVEYOR'S OFFICE

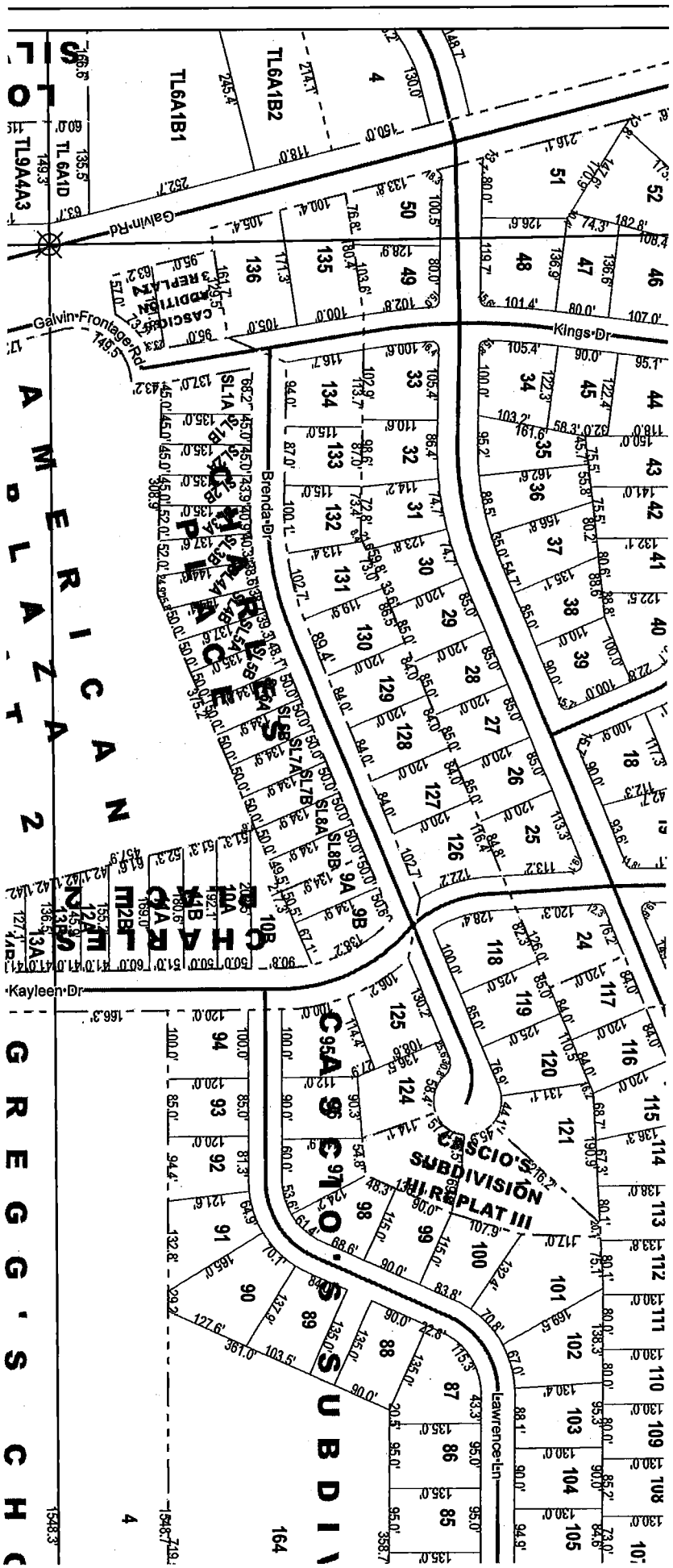


- Legend**
- Corners
  - Quarter Sections
  - Subdivisions
  - Rights of Way
  - Lots
  - Blocks
  - Railroads
  - Street Centerline

**NOTICE**

This map constitutes a representation based on information provided to the Sarpy County Surveyors Office by other individuals and organizations. Therefore no representations regarding the accuracy of the size, dimensions, measurements, condition, platting, or location of the within described area are made. Should such information be required for construction, zoning, or other purposes, the services of a private surveyor and/or title search should be secured.

This Map Was Printed On:  
6/23/2009



166.8  
 60.9 TL 6A1D  
 149.3  
 TL 19A4A3

AMERICAN  
 2

GREGG'S CHC

TL 6A1B1

TL 6A1B2

164

CASCIO'S SUBDIVISION III REPLAT III

CASCIO'S SUBDIVISION III REPLAT III

164

164

164

164

164

164

164

164

164

164

164

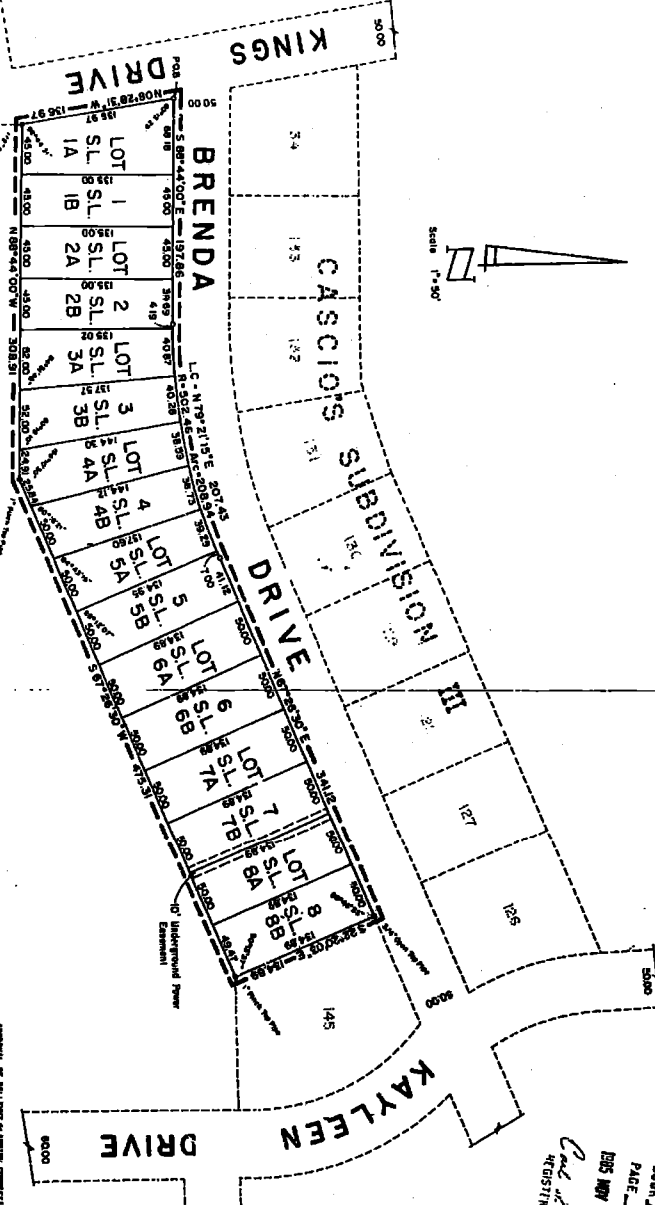
164

164

# CHARLES' PLACE

LOTS 1 THRU 9, INCLUSIVE  
CASCIO'S SUBDIVISION

BEING A REPLAT OF CASCIO'S SUBDIVISION SECTION 26, T14N, R13E OF THE 6TH P.M., SANGH COUNTY, NEBRASKA.



**LEGEND**  
 \* Center Point  
 \* Corner Set (24" Over the Face)  
 NOTE:  
 All Survey Lines are 90° unless otherwise noted.

FILED 16 50  
 BOOK 1 OF 11  
 PAGE 17  
 1905 NOV - 7 PM 2 17  
 C. W. HILLIS  
 REC'D BY HILLIS

Rec# 14091

APPROVED BY THE BOARD OF SUPERVISORS  
 COUNTY OF SANGH, NEBRASKA  
 AFTER: *Boyd Hill* *W. J. Hill*



*Wm. J. Hill*  
 County Engineer

**Davis Engineering and Associates, Inc.**  
 ENGINEERS LAND SURVEYORS  
 1000 S. 10th Street, Lincoln, Nebraska 68502  
 (402) 441-2100

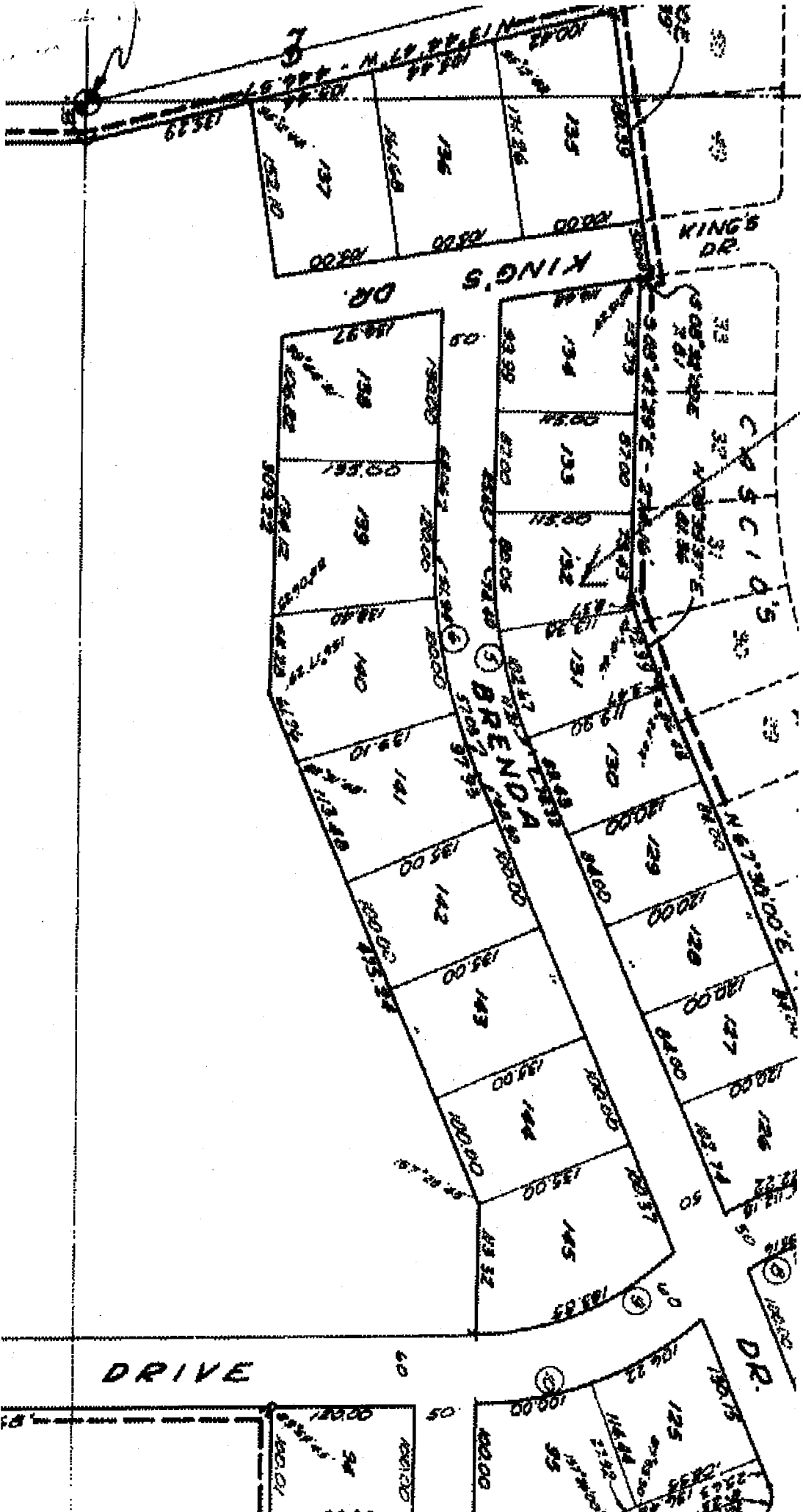


STATE OF NEBRASKA  
 DEPARTMENT OF AGRICULTURE  
 DIVISION OF LAND AND SURVEY  
 REC'D BY HILLIS

STATE OF NEBRASKA  
 COUNTY OF SANGH  
 I, *Wm. J. Hill*, County Engineer, do hereby certify that the above plat is a true and correct copy of the original plat on file in my office.

STATE OF NEBRASKA  
 COUNTY OF SANGH  
 I, *Wm. J. Hill*, County Engineer, do hereby certify that the above plat is a true and correct copy of the original plat on file in my office.

STATE OF NEBRASKA  
 COUNTY OF SANGH  
 I, *Wm. J. Hill*, County Engineer, do hereby certify that the above plat is a true and correct copy of the original plat on file in my office.



DRIVE

KING'S DR.

KING'S DR.

CASSIDY'S

BRENDA DRIVE

DR.

