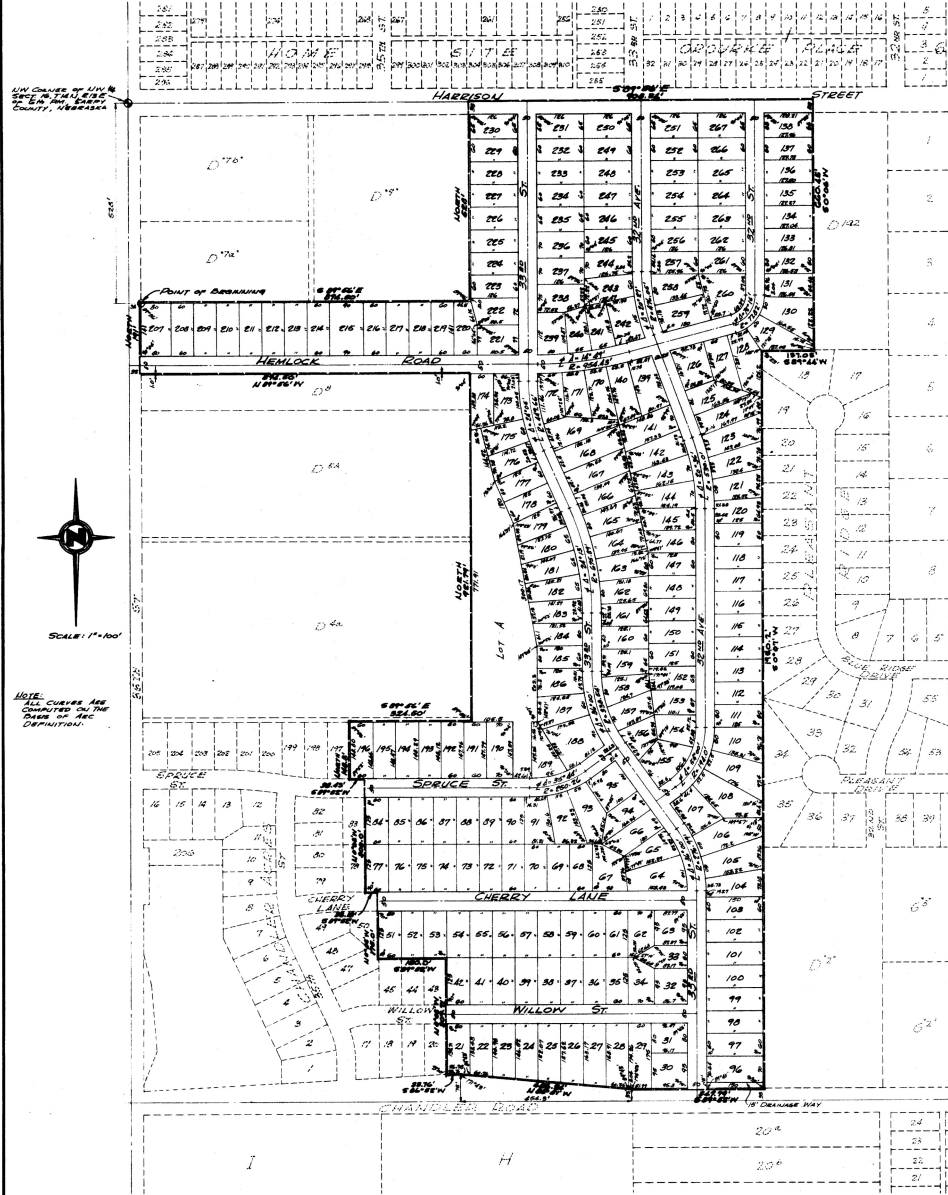


CHANDLER ACRES

LOTS 21 THRU 42 INCL., 51 THRU 77 INCL., 84 THRU 116 INCL., 127 THRU 167 INCL.
A PLATTING OF PART OF THE NW1/4 OF SEC. 16, T14N, R18E OF THE 6TH RM. SARDY COUNTY, NEBRASKA.



Know All Men By These Presents:

That [Name] Construction Co., a Nebraska corporation, and its president and proprietor of the land described in the foregoing certificate of platting and within this plat, has caused this plat to be established, laid out and approved as the same shall be hereinafter set forth, and as the same shall be hereinafter approved by the Board of Commissioners of the County of Sardy, Nebraska, and as the same shall be hereinafter approved by the Board of Supervisors of the County of Sardy, Nebraska, and as the same shall be hereinafter approved by the Board of Directors of said corporation, the Board of Supervisors of the County of Sardy, Nebraska, and the Board of Commissioners of the County of Sardy, Nebraska.

Witness my hand and seal of office this 28th day of June, 1960.

William F. Taylor
President

Amos J. Salomatsky
Secretary

APPROVED BY BOARD OF COMMISSIONERS
County of Sardy, Nebraska

[Signature]
Chairman

APPROVED BY BOARD OF SUPERVISORS
County of Sardy, Nebraska

[Signature]
Chairman

APPROVED BY COUNTY ATTORNEY
County of Sardy, Nebraska

[Signature]

APPROVED BY COUNTY CLERK
County of Sardy, Nebraska

[Signature]

APPROVED BY COUNTY ENGINEER
County of Sardy, Nebraska

[Signature]

APPROVED BY COUNTY TREASURER
County of Sardy, Nebraska

[Signature]

APPROVED BY COUNTY SHERIFF
County of Sardy, Nebraska

[Signature]

APPROVED BY COUNTY JUDGE
County of Sardy, Nebraska

[Signature]

APPROVED BY COUNTY CLERK
County of Sardy, Nebraska

[Signature]

APPROVED BY COUNTY ENGINEER
County of Sardy, Nebraska

[Signature]

APPROVED BY COUNTY TREASURER
County of Sardy, Nebraska

[Signature]

APPROVED BY COUNTY SHERIFF
County of Sardy, Nebraska

[Signature]

APPROVED BY COUNTY JUDGE
County of Sardy, Nebraska

[Signature]

APPROVED BY COUNTY CLERK
County of Sardy, Nebraska

[Signature]

APPROVED BY COUNTY ENGINEER
County of Sardy, Nebraska

[Signature]

APPROVED BY COUNTY TREASURER
County of Sardy, Nebraska

[Signature]

APPROVED BY COUNTY SHERIFF
County of Sardy, Nebraska

[Signature]

APPROVED BY COUNTY JUDGE
County of Sardy, Nebraska

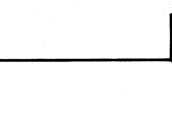
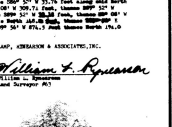
[Signature]

APPROVED BY COUNTY CLERK
County of Sardy, Nebraska

[Signature]

APPROVED BY COUNTY ENGINEER
County of Sardy, Nebraska

[Signature]



FILED 3-7-60

FILED 3-7-60

STATE OF NEBRASKA }
SARPY COUNTY }

Filed for record

A. D. 1960 at 10 o'clock A.M.
and recorded in Book # 2
of State of NEBRASKA Page 129
Fred Ruff County Clerk

\$4.50 fee

129