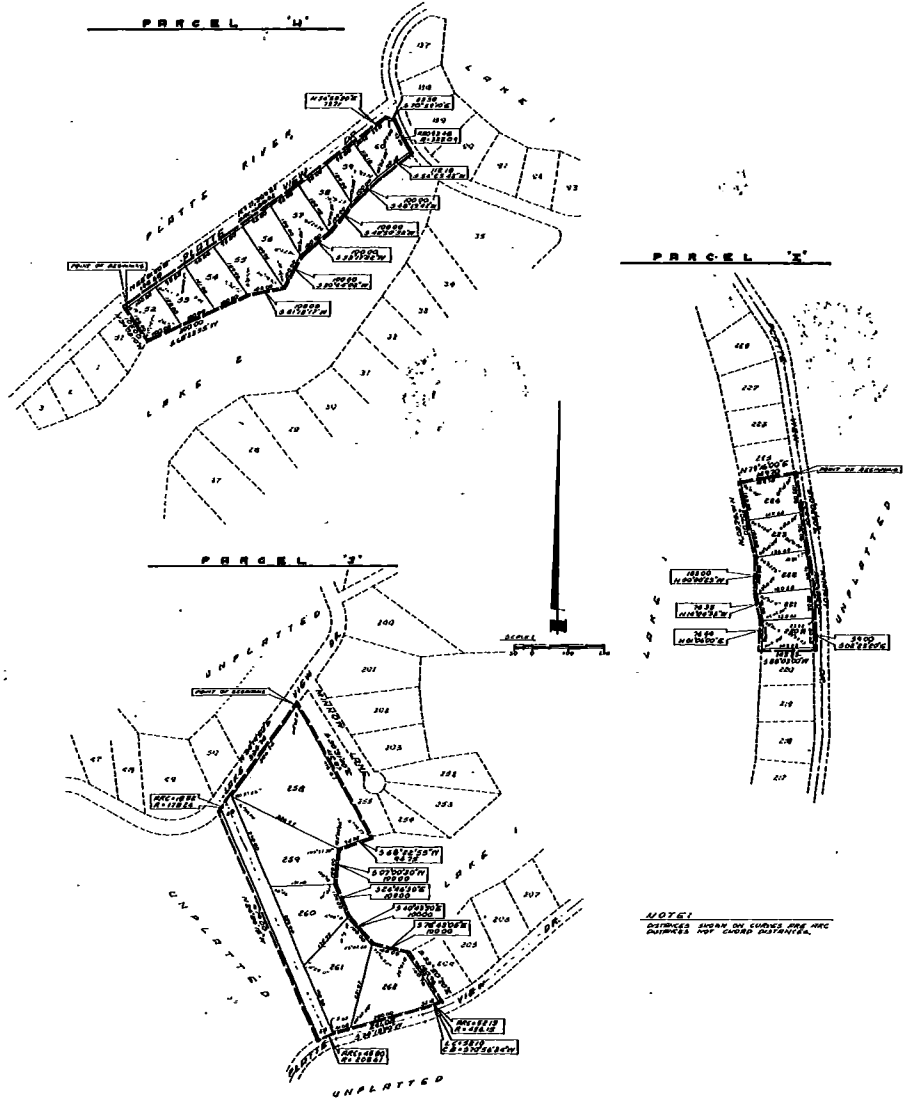


# CEDAR CREEK LAKES

LOTS 35 THRU 40, INCLUSIVE, LOTS 220 THRU 224, INCLUSIVE, AND LOTS 258 THRU 262, INCLUSIVE.

BEING A PLATTING OF PART OF THE NW 1/4 OF SECTION 3 T12N, PART OF THE NE 1/4 OF SECTION 6 T12N, AND PART OF THE SE 1/4 OF SECTION 31 T12N, ALL IN R12E OF THE 6th RM., CHAS COUNTY, NEBRASKA.



NOTICE: DISTANCE SHOWN ON CURVES ARE FOR BUSINESS PURPOSES ONLY - LEGAL DISTANCE.

### SURVEY & CORRECTIONS

I, *John C. Roll*, a duly sworn and licensed Surveyor of this State, do hereby certify that the above plat was prepared and made, with the exception of all errors, omissions, and corrections, in accordance with the provisions of the laws of this State relating to the platting of land.

Witness my hand and seal of office at *Omaha, Nebraska*, this *10th* day of *November*, 1910.

*John C. Roll*  
Surveyor

### REMARKS

This plat was prepared by *John C. Roll*, a duly sworn and licensed Surveyor of this State, and is hereby certified as correct by the undersigned, a Justice of the Peace for said County.

*John C. Roll*  
Justice of the Peace

STATE OF NEBRASKA  
COUNTY OF CHAS.  
I, *John C. Roll*, a duly sworn and licensed Surveyor of this State, do hereby certify that the above plat was prepared and made, with the exception of all errors, omissions, and corrections, in accordance with the provisions of the laws of this State relating to the platting of land.

Witness my hand and seal of office at *Omaha, Nebraska*, this *10th* day of *November*, 1910.

*John C. Roll*  
Surveyor

STATE OF NEBRASKA  
COUNTY OF CHAS.  
I, *John C. Roll*, a duly sworn and licensed Surveyor of this State, do hereby certify that the above plat was prepared and made, with the exception of all errors, omissions, and corrections, in accordance with the provisions of the laws of this State relating to the platting of land.

Witness my hand and seal of office at *Omaha, Nebraska*, this *10th* day of *November*, 1910.

*John C. Roll*  
Surveyor

Plat  
*John C. Roll*  
Public  
State of Nebraska  
Case County  
Entered on municipal index and filed for record in register of deeds office the *10th* day of *November*, 1910 at *10:15* o'clock, A.M. in Book *125* of *Plat* Book, 5 page, 36 on page *62* of *2* fee *3.50* \$.  
*John C. Roll*  
Register of Deeds  
By *Ch. Clark* Deputy

6-36