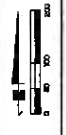


N.E. 1/4 SEC. 8-15-12

INFORMATION ON THIS SHEET SHOULD BE REFERRED WITH THE PLAT MAP BEING REFERRED TO.

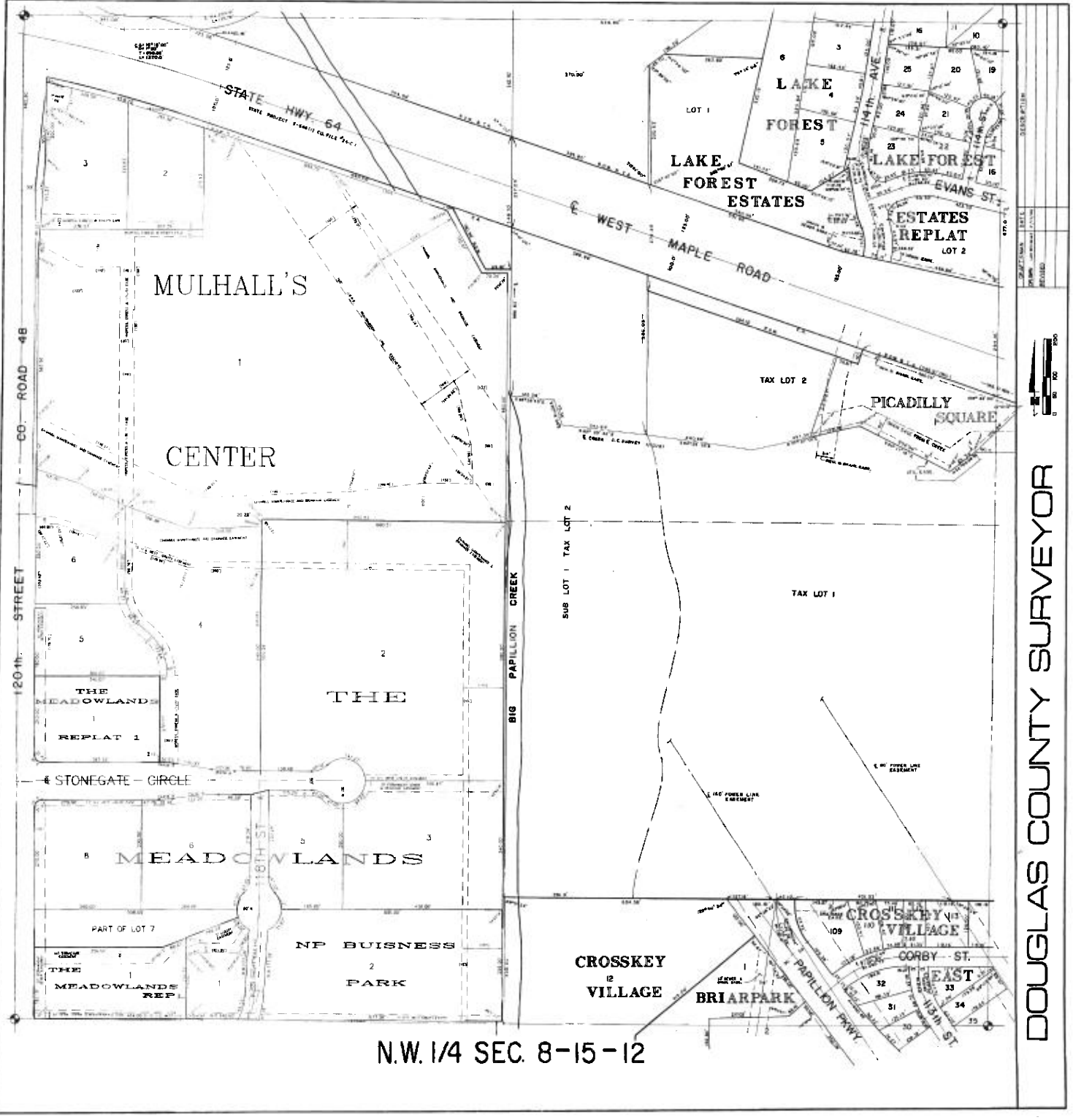
INFORMATION ON THIS SHEET SHOULD BE REFERRED WITH THE PLAT MAP BEING REFERRED TO.

DOUGLAS COUNTY SURVEYOR



DATE	DESCRIPTION



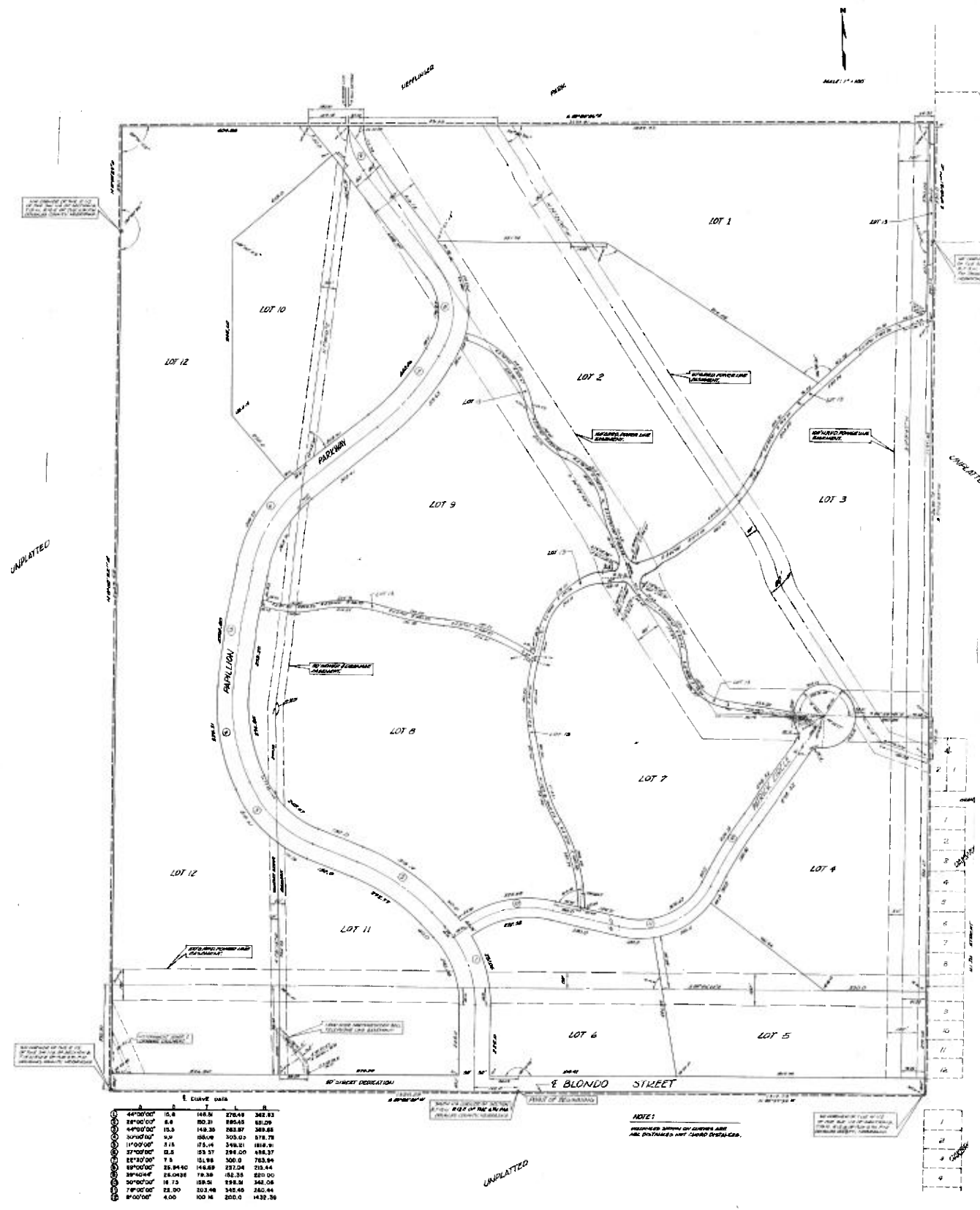


N.W. 1/4 SEC. 8-15-12

DOUGLAS COUNTY SURVEYOR

# CROSSKEY VILLAGES

LOTS 1 THRU 13 INCLUSIVE.  
 BEING A PLATTING OF THE E 1/2 OF THE SW 1/4, AND THE W 1/2 OF THE SE 1/4, AND THE SOUTH 330 FEET OF THE  
 E 1/2 OF THE NW 1/4 AND THE SOUTH 330 FEET OF THE W 1/2 OF THE NE 1/4 ALL IN SECTION 8, T16N, R16E OF THE 6TH  
 RM. DOUGLAS COUNTY, NEBRASKA.



Curve Data

Stationing	Length	PC	PT
44°00'00"	15.4	148.51	270.44
38°00'00"	8.6	202.31	285.65
44°00'00"	15.5	148.35	283.87
30°00'00"	9.9	258.09	305.02
17°00'00"	21.8	175.44	348.21
37°00'00"	12.2	153.37	294.00
27°00'00"	7.8	151.88	300.0
18°00'00"	28.940	148.89	221.04
39°00'00"	28.0438	78.38	152.35
30°00'00"	18.13	158.51	298.58
7°00'00"	22.00	302.48	345.45
8°00'00"	4.00	100.16	200.0

NOTE:  
 DIMENSIONS SHOWN ON CURVES ARE  
 ALL DISTANCES NOT CURVED DISTANCES.

1
2
3
4
5
6
7
8
9
10
11
12
13

