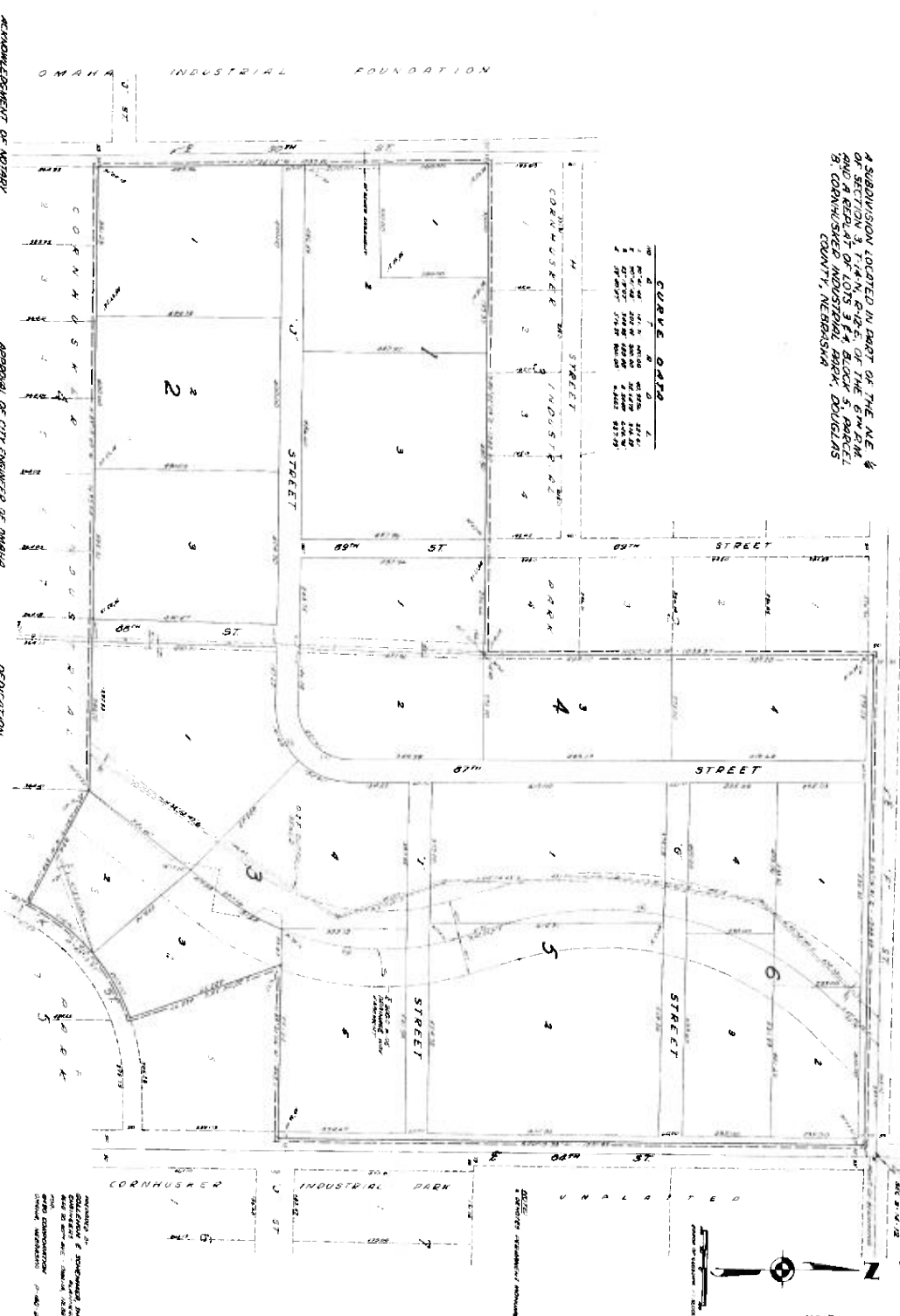


CORNHUSKER INDUSTRIAL PARK NO. 2

A SUBDIVISION LOCATED IN PART OF THE NE 1/4
OF SECTION 34, T. 1 N., R. 10 E., OF THE 6TH PRINCIPAL
MERCANTILE AND PLAT 20, CORNHUSKER INDUSTRIAL PARK, DOUGLASS
COUNTY, NEBRASKA



OMAHA INDUSTRIAL FOUNDATION

Table with 4 columns: Curve No., Stationing, Curve Type, Data. Contains details for three curves.

ACKNOWLEDGMENT OF NOTARY

On this 21st day of December, A.D. 1954, before me, the undersigned, Notary Public in and for the State of Nebraska, personally appeared the following persons, to-wit: ...

Signature of Notary

Signature of Applicant

APPROVAL OF CITY ENGINEER OF OMAHA

I, the undersigned, City Engineer of Omaha, Nebraska, do hereby approve of the foregoing plat and certify that it conforms to the requirements of the City of Omaha, Nebraska, and that it is in accordance with the laws and ordinances of said City.



APPROVAL OF OMAHA CITY ENGINEER

I, the undersigned, City Engineer of Omaha, Nebraska, do hereby approve of the foregoing plat and certify that it conforms to the requirements of the City of Omaha, Nebraska, and that it is in accordance with the laws and ordinances of said City.



BOARDING RESOLUTION

A resolution of the Board of Public Works of the City of Omaha, Nebraska, approving the foregoing plat.

Date: 12-17-54

DEDICATION

THE UNDERSIGNED, the Omaha Industrial Foundation, do hereby dedicate the streets and public grounds shown on this plat to the public use of the City of Omaha, Nebraska.

Signature of Omaha Industrial Foundation

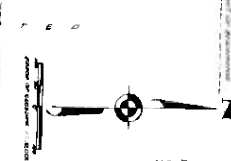
Signature of Representative

SUBMITTER'S CERTIFICATE

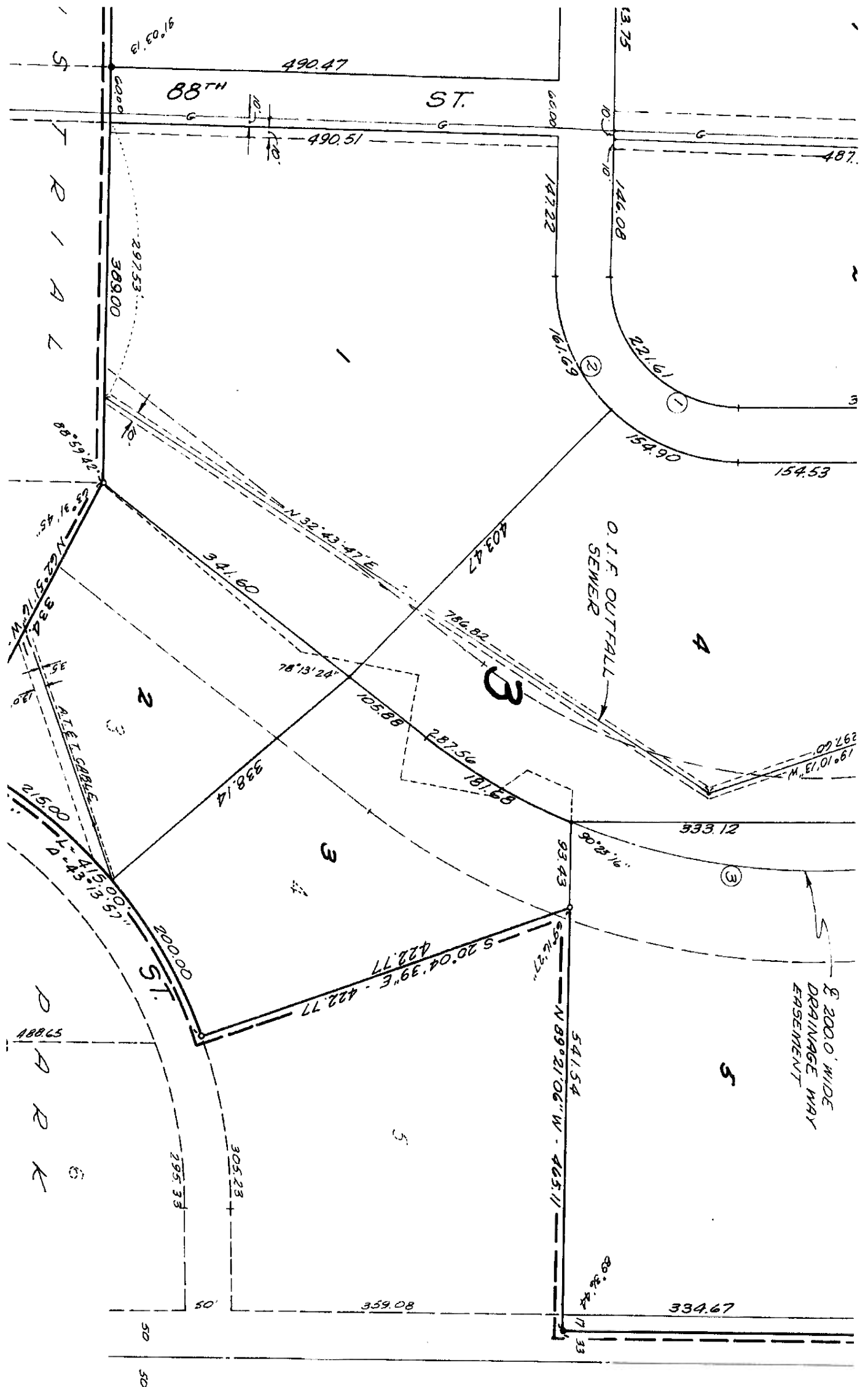
I, the undersigned, submitter of this plat, certify that it is a true and correct copy of the original plat filed with me, and that I am the owner of the land shown on this plat.

Signature of Submitter

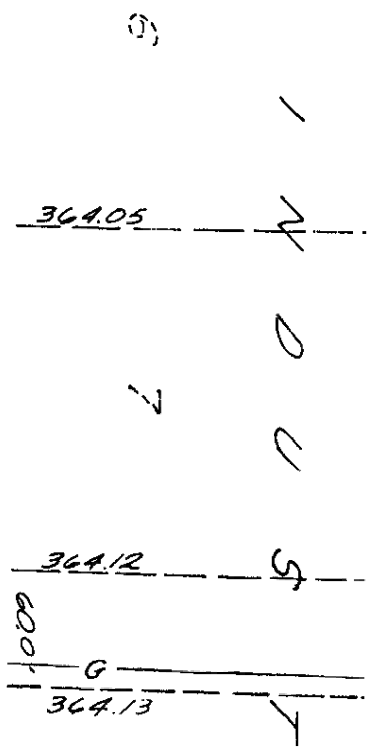
Signature of Submitter



Notary Seal for the State of Nebraska, with signature and text: 'I certify that my commission expires on the 31st day of December, 1955.' and 'Notary Public in and for the State of Nebraska.' Includes a large handwritten '1-17-54'.



PREPARED BY:
 GOLLEHON &
 ENGINEERS
 4660 SO. 60TH AVE
 FOR:



OF OMAHA

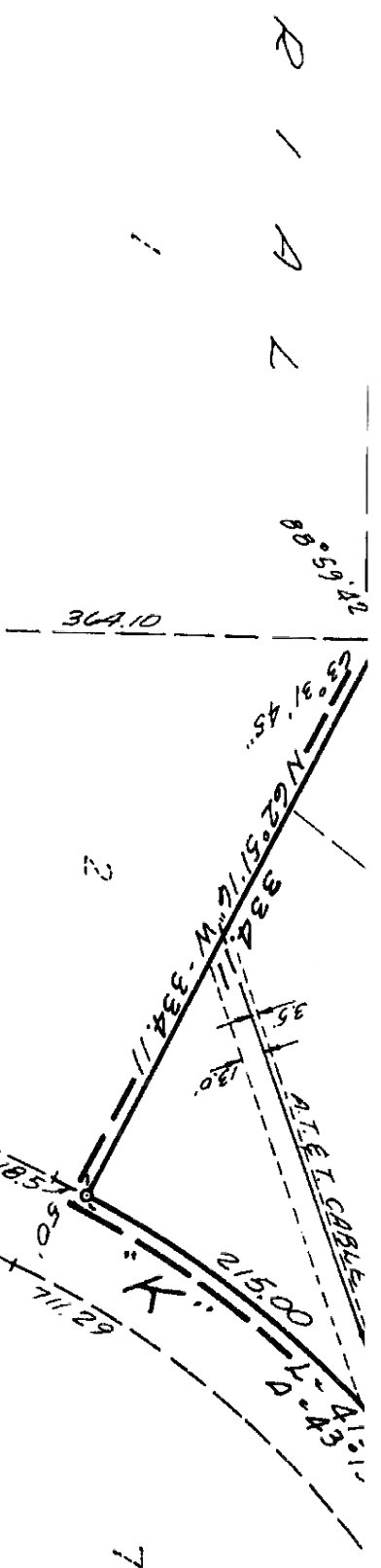
CORNHUSKER INDUSTRIAL
 CO. APR, 1965.

D.P. D. Boyd
 CITY ENGINEER

PLANNING BOARD

AT PARK NO. 2 WAS APPROVED
 ON THIS 16 DAY OF

Quinn D. Masterson
 CHAIRMAN OMAHA CITY
 PLANNING BOARD



DEDICATION

KNOW ALL MEN BY THESE PRESENTS: THAT THE 8490 CORPORATION, A NEBRASKA CORPORATION, WESTWOOD DEVELOPMENT CO, A NEBRASKA CORPORATION, MAURICE M. VERVAECKE AND LUCILLE A. VERVAECKE, HUSBAND AND WIFE, DONALD M. VERVAECKE AND JOYCE L. VERVAECKE, HUSBAND AND WIFE, JOE R. STEYSKAL AND JOSEPHINE STEYSKAL, HUSBAND AND WIFE, BEING SOLE OWNERS AND PROPRIETORS OF THE LAND DESCRIBED IN THE SURVEYORS CERTIFICATE AND EMBRACED WITHIN THIS PLAT, HAVE CAUSED THE SAME TO BE SUBDIVIDED INTO LOTS AND STREETS, SAID SUBDIVISION TO BE KNOWN AS CORNHUSKER INDUSTRIAL PARK NO. 2, THE LOTS AND BLOCKS NUMBERED AS SHOWN AND WE HEREBY RATIFY AND APPROVE OF THE DISPOSITION OF OUR PROPERTY AS SHOWN ON THIS PLAT AND WE HEREBY DEDICATE TO THE PUBLIC FOR PUBLIC USE THE STREETS SHOWN HEREIN. THE ABOVE OR FOREGOING SUBDIVISION LOCATED IN THE NORTHEAST QUARTER OF SECTION 3, TOWNSHIP 14 NORTH, RANGE 12 EAST OF THE 6TH PM, AS APPEARS ON PLAT, IS MADE WITH FREE CONSENT AND IN ACCORDANCE WITH THE DESIRE OF THE UNDERSIGNED OWNERS AND PROPRIETORS.

IN WITNESS WHEREOF WE DO HEREUNTO SET OUR HAND THIS 18 DAY OF May AD, 1965.

8490 CORPORATION

SUI
 I
 DES
 49
 THE
 PER
 COR.
 BLO
 REG
 THE
 EAS
 B.
 NOR
 THE
 EAS
 ALO,
 PAR
 5 20
 A D,
 LINE
 OF 4
 BLO,
 N 8