

LOTHROP HEIGHTS ADDITION

TO THE CITY OF CRETE, NEBRASKA

SURVEYOR'S CERTIFICATE

I HEREBY CERTIFY THAT I HAVE CAUSED TO BE SURVEYED THE SUBDIVISION DESCRIBED HEREIN AND THAT IRON PINS ARE SET AT ALL CORNERS MARKED THIS SAID SUBDIVISION LOCATED IN THE NE¹/₄ OF SECTION 35, T8N, R4E OF THE 6TH P.M., SALINE COUNTY, NEBRASKA AND MORE PARTICULARLY DESCRIBED AS FOLLOWS:

FOR THE PURPOSES OF THIS LEGAL DESCRIPTION THE WEST LINE OF THE NE¹/₄ OF SECTION 35 T8N, R4E, OF THE 6TH P.M., SALINE COUNTY NEBRASKA SHALL HAVE AN ASSUMED BEARING OF DUE SOUTH.

COMMENCING AT THE NW CORNER OF THE NE¹/₄ SECTION 35, T8N, R4E, OF THE 6TH P.M., SALINE COUNTY NEBRASKA: THENCE DUE SOUTH A DISTANCE OF 978.83 FEET TO THE POINT OF BEGINNING; THENCE N 89° 46' 30" E A DISTANCE OF 947.90 FEET; THENCE N 0° 13' 30" W A DISTANCE OF 76.00 FEET; THENCE S 89° 51' 30" E A DISTANCE OF 150.00 FEET; THENCE S 0° 13' 30" E A DISTANCE OF 355.04 FEET; THENCE S 89° 46' 30" W A DISTANCE OF 150.00 FEET; THENCE S 0° 13' 30" E A DISTANCE OF 350.00 FEET; THENCE S 34° 31' 30" W A DISTANCE OF 531.00 FEET; THENCE N 55° 28' 30" W A DISTANCE OF 213.21 FEET; THENCE S 34° 31' 30" W A DISTANCE OF 66.00 FEET; THENCE N 55° 28' 30" W A DISTANCE OF 276.07 FEET; THENCE DUE WEST A DISTANCE OF 209.62 FEET; THENCE DUE NORTH A DISTANCE OF 880.00 FEET TO THE POINT OF BEGINNING; CONTAINING A CALCULATED AREA OF 21.796 ACRES MORE OR LESS.

ALL DIMENSIONS ARE IN FEET AND DECIMALS OF A FOOT AND ALL DIMENSIONS ALONG CURVES ARE CHORD DISTANCES UNLESS OTHERWISE NOTED.

SIGNED THIS 17th DAY OF SEPTEMBER, 1976.

Deane H. Connelly
DEANE H. CONNELLY, L.S., 243



APPROVAL

THE FOREGOING PLAT WAS APPROVED BY THE CRETE PLANNING COMMISSION ON THIS 5th DAY OF OCTOBER, 1977. NOTICE WAS GIVEN TO THE SCHOOL DISTRICT OF THE CITY OF CRETE, IN THE COUNTY OF SALINE, IN THE STATE OF NEBRASKA, ALSO KNOWN AS SCHOOL DISTRICT NO. 2 OF SALINE COUNTY, NEBRASKA 10 DAYS PRIOR TO APPROVAL PURSUANT TO SEC. 79-4151 R.R.S. 1943.

ATTEST: *Yvonne Funch*
CHAIRMAN

ACCEPTANCE

THE FOREGOING PLAT AND DEDICATION WAS APPROVED AND ACCEPTED BY THE CITY COUNCIL OF THE CITY OF CRETE, NEBRASKA THE 18th DAY OF OCTOBER, 1977. THE STREET'S WERE APPROVED AND ACCEPTED BY ORDINANCE NO. 745 PASSED THE 18th DAY OF OCTOBER, 1977.

ATTEST: *Gary L. York*
CITY CLERK



1 $\Delta = 34^\circ 45' 00''$
 R = 125.00'
 L = 75.81'
 T = 39.11'

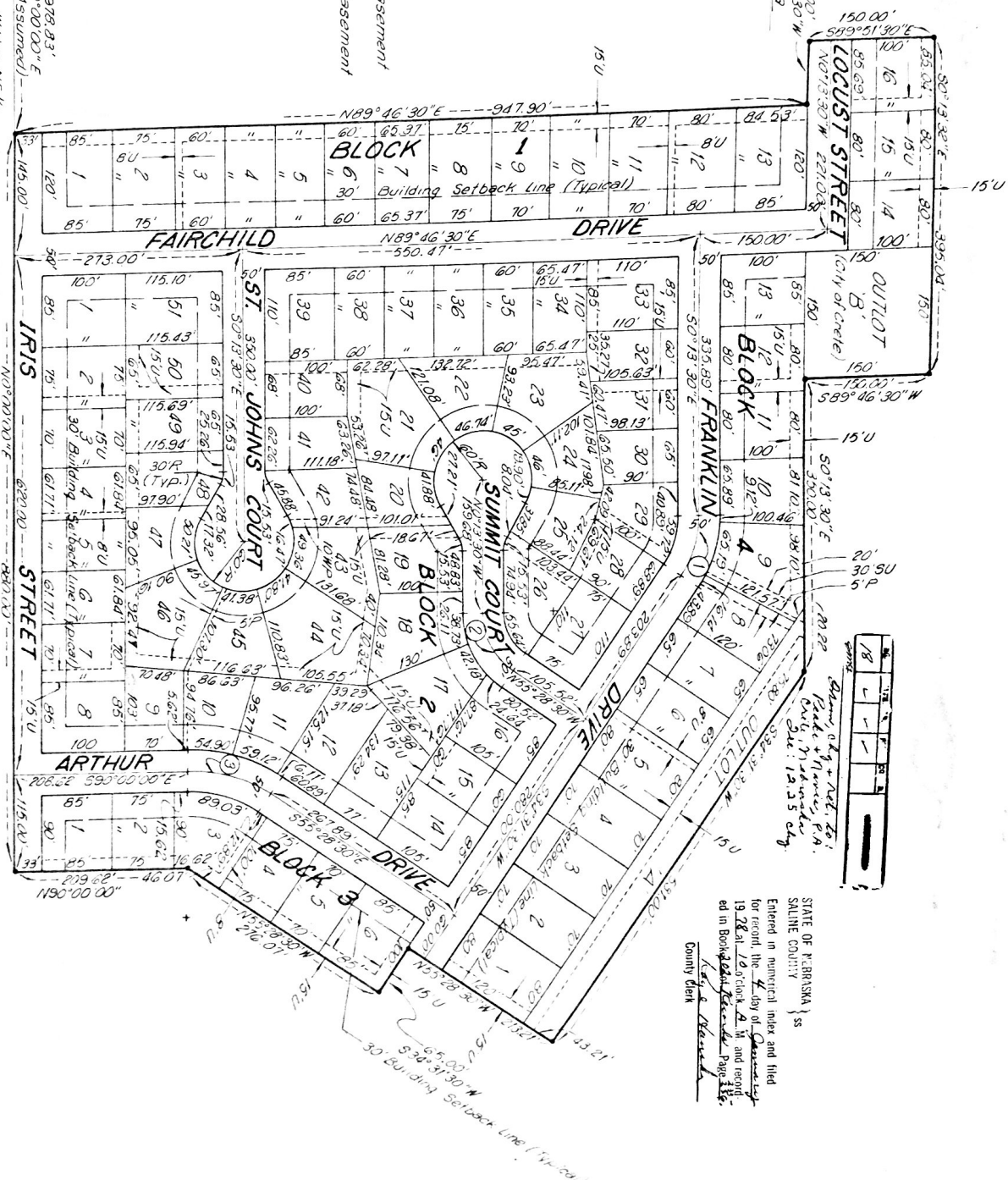
2 $\Delta = 55^\circ 15' 00''$
 R = 85.00'
 L = 81.97'
 T = 44.48'

3 $\Delta = 34^\circ 31' 30''$
 R = 175.00'
 L = 105.45'
 T = 51.38'

Easement Key
 U = Utility Easement
 SU = Storm Drain & Utility Easement
 P = Pedestrian Easement
 WP = Water Main & Pedestrian Easement

N/4 Cor. Sec. 35-8-4

378.83' 50°00'00" E (Assumed)
 W Line NE 1/4 Sec. 35-8-4



No.	Width	Depth	Area
1/8	15'	15'	225
1/4	15'	30'	450
3/8	15'	45'	675
1/2	15'	60'	900
5/8	15'	75'	1125
3/4	15'	90'	1350
7/8	15'	105'	1575
1	15'	120'	1800

STATE OF WISCONSINA }
 SALTINE COUNTY } ss
 Entered in numerical index and filed
 for record the 4 day of December
 19 28 at 10:10 A.M. and certified
 in Book 224, Page 315.
 Kelly H. Hensley
 County Clerk

Sheet 2 of 2