

CENTERLINE CURVE DATA				
CURVE	RADIUS	ARC LENGTH	CHORD LENGTH	DELTA ANGLE
C1	800.00'	131.63'	131.46'	9°25'39"
C2	100.00'	140.49'	129.22'	80°29'51"
C3	300.00'	98.52'	98.06'	18°48'55"
C4	100.00'	71.62'	70.10'	41°02'05"
C5	400.00'	10.27'	10.27'	1°28'15"
C6	400.00'	209.43'	207.05'	29°59'58"
C7	175.00'	113.32'	111.35'	37°06'06"
C8	225.00'	151.47'	148.63'	38°34'20"
C9	1230.00'	402.65'	400.86'	18°45'23"
C10	1230.00'	271.65'	271.10'	12°39'15"
C11	1230.00'	161.06'	160.94'	7°30'08"
C12	1720.00'	170.14'	170.07'	5°40'03"
C13	300.00'	174.38'	171.94'	33°18'15"
C14	950.00'	520.81'	514.31'	31°24'38"
C15	950.00'	124.39'	124.30'	7°30'08"
C16	2000.00'	509.76'	508.38'	14°36'13"
C17	100.00'	152.48'	138.13'	87°21'49"
C18	670.00'	338.48'	332.95'	28°46'27"
C19	670.00'	87.73'	87.67'	7°30'08"
C20	2280.00'	692.08'	689.42'	17°23'30"
C21	2280.00'	107.04'	107.03'	2°41'23"
C22	5000.00'	154.52'	154.52'	1°46'15"
C23	300.00'	31.51'	31.50'	6°01'07"
C24	800.00'	64.21'	64.19'	4°35'55"
C25	800.00'	84.04'	84.00'	6°01'07"
C26	400.00'	143.61'	142.84'	20°34'13"
C27	400.00'	177.07'	175.83'	25°21'49"
C28	400.00'	110.54'	110.19'	15°50'03"
C29	500.00'	104.02'	103.83'	11°55'11"
C30	1419.00'	169.27'	169.17'	6°50'05"
C31	1419.00'	325.07'	324.36'	13°07'33"
C32	1419.00'	192.39'	192.25'	7°48'08"
C33	300.00'	63.13'	63.01'	12°03'25"
C34	300.00'	63.13'	63.01'	12°03'25"
C35	500.00'	67.79'	67.74'	7°46'06"
C36	500.00'	182.34'	181.33'	20°53'39"

PARCEL CURVE TABLE				
CURVE #	RADIUS	CHORD BEARING	CHORD LENGTH	ARC LENGTH
C37	1461.50'	S74°21'14"W	192.04'	192.17'
C38	1538.50'	N74°02'25"E	203.78'	203.83'

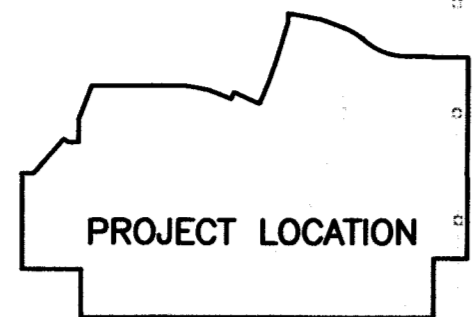
**SECTION CORNER TIES**

NW CORNER SE 1/4 SEC. 20, T14N, R11E  
 3/4" OF (10.5" B.S.)  
 5/8" REBAR  
 -SW 4.98' TO NAIL IN TOP OF OLD CORNER POST  
 -NE 9.20' TO 5/8" REBAR, 10.3' B.G.  
 -NW 7.20' TO 5/8" REBAR, 10.3' B.G.

SW CORNER SE 1/4 SEC. 20, T14N, R11E  
 1" OF  
 -SE 69.77' TO "X" NAILS IN NW FACE OF P.P., 13.5' A.G.  
 -SW 29.56' TO "X" NAILS IN NORTH FACE OF CORNER POST, 13.17' A.G.  
 -N 33.98' TO 3/4" REBAR, 10.2' B.G.

NE CORNER SE 1/4 SEC. 20-14-11  
 3/4" OF (10.5" B.S.)  
 -S4.68' W TO FOUND 800 NAIL IN S. FACE OF WOOD PP, 10.5' A.G.  
 -S3.46' E TO FOUND "X" NAILS IN SW FACE OF CORNER POST, 12' A.G.  
 -S6.87' NNE TO SET CHAMFER "X" IN TOP OF 2" CAMP  
 -S8.00' SSW TO SET CHAMFER "X" IN TOP OF 2" CAMP

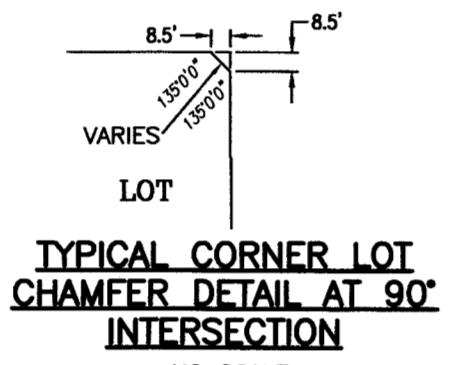
SW CORNER SE 1/4 SEC. 20-14-11  
 SURVEY SPINNS SHIRT (MISSING HEAD)  
 -E7.25' ESE TO FOUND "X" NAILS IN N. FACE OF WOOD PP, 11' A.G.  
 -E5.07' SW TO FOUND "X" NAILS IN NW FACE OF WOOD PP, 13.07' A.G.  
 -W4.21' NE TO SET CHAMFER "X" IN SW QUAD. NAIL HANG FOR FOUND ALL WOODS



**VICINITY MAP**

**NOTES**

- ALL DISTANCES ARE SHOWN IN DECIMAL FEET.
- ALL DISTANCES SHOWN ALONG CURVES ARE ARC DISTANCES NOT CHORD DISTANCES.
- ALL ANGLES ARE 90° UNLESS OTHERWISE NOTED.
- ALL LOT LINES ON CURVED STREETS ARE RADIAL UNLESS OTHERWISE NOTED WITH AN ANGLE TO CHORD IN BRACKETS.
- ALL CUL-DE-SAC RADI ARE 50 FEET UNLESS NOTED OTHERWISE.
- ALL CUL-DE-SAC THROAT RADI ARE 25 FEET UNLESS NOTED OTHERWISE.
- LOTS AND OUTLOTS WILL HAVE NO DIRECT VEHICULAR ACCESS TO S 180TH STREET, S 186TH STREET AND CORNHUSKER ROAD.
- OUTLOTS C AND F ARE DEDICATED DRAINAGEWAYS.
- OUTLOTS A, B, D AND E ARE DEDICATED WATER QUALITY BASINS.
- OUTLOT G IS FUTURE DEVELOPMENT.
- ALL EXISTING EASEMENTS ARE NOT BEING REDEDICATED AND ARE SHOWN FOR REFERENCE ONLY.
- PROPOSED STORM SEWER, DRAINAGE AND SANITARY SEWER EASEMENTS ARE TO SHD 333 VIA SEPARATE RECORDED INSTRUMENT UNLESS NOTED OTHERWISE.



**TYPICAL CORNER LOT CHAMFER DETAIL AT 90° INTERSECTION**

**COUNTY TREASURER'S CERTIFICATE**

THIS IS TO CERTIFY THAT I FIND NO REGULAR NOR SPECIAL TAXES DUE OR DELINQUENT AGAINST THE PROPERTY DESCRIBED IN THE LAND SURVEYOR'S CERTIFICATE AND EMBRACED IN THIS PLAT, AS SHOWN BY THE RECORDS OF THIS OFFICE, THIS

12 DAY OF Oct 2018.  
 SARY COUNTY TREASURER

TAXES ASSESSED AND PAID FOR THE CURRENT YEAR AND PRIOR YEAR DUE NOR PAID. TREASURER'S CERTIFICATE IS ONLY VALID UNTIL DECEMBER 30TH OF THIS YEAR.

**APPROVAL OF COUNTY PLANNING COMMISSION**

THIS PLAT OF HILLS OF ASPEN CREEK, LOTS 1 THROUGH 267, INCLUSIVE AND OUTLOTS A THROUGH G, INCLUSIVE WAS APPROVED AND ACCEPTED BY THE COUNTY PLANNING COMMISSION CHAIRMAN ON THIS

21st DAY OF Sept 2018.  
 Thomas F. Achley  
 COUNTY PLANNING COMMISSION CHAIRMAN

**APPROVAL OF COUNTY BOARD OF COMMISSIONERS**

THIS PLAT OF HILLS OF ASPEN CREEK, LOTS 1 THROUGH 267, INCLUSIVE AND OUTLOTS A THROUGH G, INCLUSIVE WAS APPROVED AND ACCEPTED BY THE BOARD OF COMMISSIONERS, THIS

11th DAY OF September 2018.  
 Registered County Clerk  
 Chairman, Board of Commissioners

**APPROVAL OF COUNTY PLANNING DIRECTOR**

THIS PLAT OF HILLS OF ASPEN CREEK, LOTS 1 THROUGH 267, INCLUSIVE AND OUTLOTS A THROUGH G, INCLUSIVE WAS APPROVED AND ACCEPTED BY THE COUNTY BUILDING INSPECTOR ON THIS

15th DAY OF October 2018.  
 County Planning Director

**REVIEW BY SARY COUNTY PUBLIC WORKS**

THIS PLAT OF HILLS OF ASPEN CREEK, LOTS 1 THROUGH 267, INCLUSIVE AND OUTLOTS A THROUGH G, INCLUSIVE WAS REVIEWED BY THE SARY COUNTY SURVEYOR'S OFFICE THIS

22nd DAY OF October 2018.  
 SARY COUNTY SURVEYOR/ENGINEER



**SARY COUNTY RD-50 AND RS-72 ZONING SETBACK REQUIREMENTS**

NO SCALE

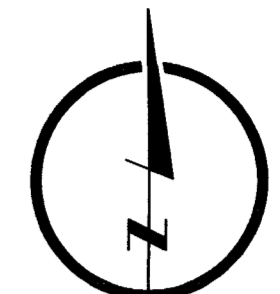
SE 1/4 SEC. 20, T14N, R11E  
 PT. TL1A1

**HILLS OF ASPEN CREEK**

LOTS 1 THROUGH 267, INCLUSIVE AND OUTLOTS A THROUGH G, INCLUSIVE, BEING A PLATTING OF PART OF TAX LOTS 1A1 AND 1A2 LOCATED IN THE SOUTHEAST QUARTER OF SECTION 20, TOWNSHIP 14 NORTH, RANGE 11 EAST OF THE 6TH P.M., SARY COUNTY, NEBRASKA

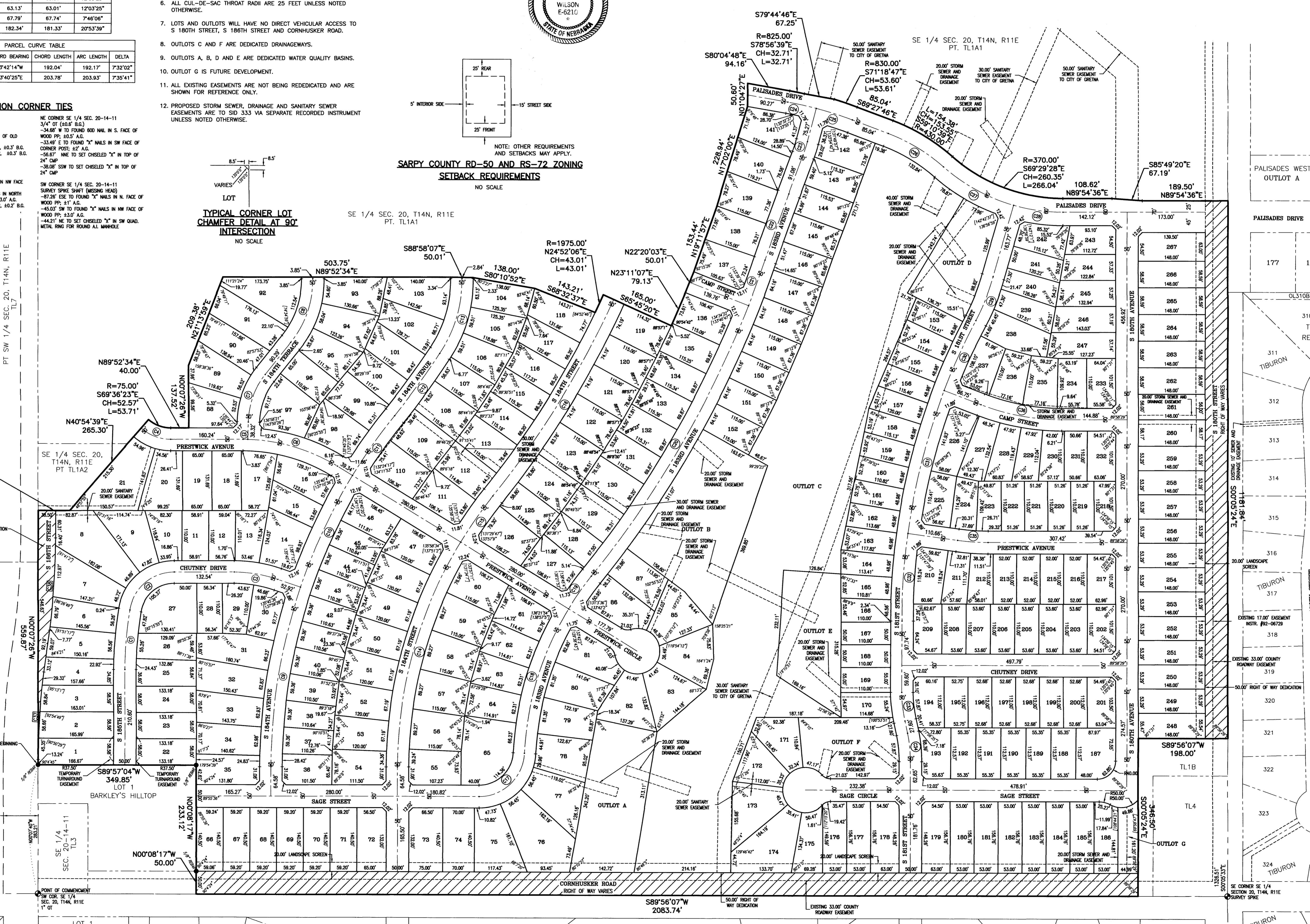
COUNTY: SARY  
 VERIFY: [initials]  
 PREPARED BY: [initials]  
 CHECKED BY: [initials]  
 DATE: [initials]

FILED SARY COUNTY NEBRASKA  
 INSTRUMENT NUMBER  
 2018-24567  
 10/17/2018 3:58:23 PM  
 REGISTER OF DEEDS



**LEGEND**

- OT OPEN TOP PIPE
- CORNER FOUND
- SECTION LINE
- SECTION CORNER
- BOUNDARY LINE
- LOT LINE
- EXISTING LOT LINE
- EASEMENT LINE
- STREET DEDICATION



**LAMP RYNEARSON**  
 14710 West Dodge Road, Suite 100  
 Omaha, Nebraska 68154-2027  
 www.LRA-inc.com

**HILLS OF ASPEN CREEK (LOTS 1-267 AND OUTLOTS A-G) SARY COUNTY, NEBRASKA**

**FINAL PLAT**

**SHEET 1 OF 2**

JOB: 24567



