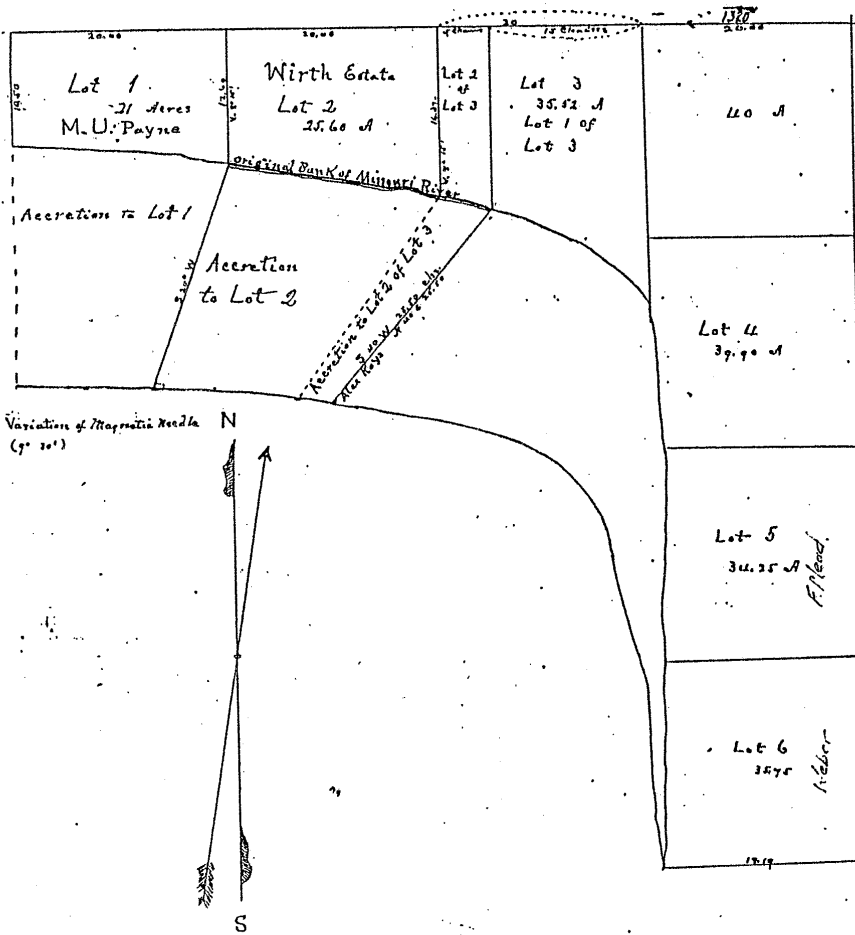


See Book 38 of Deeds Page 62, 63-64 for Survey of the 33
of Fractional
 Irregular Survey, Section Thirty-three 33, 68, 43



Filed Jan. 20-1913, at 1 P. M. E. Anderson, Recorder
 Fee \$1.00

State of Iowa
Des Moines County

I hereby certify that the above is a true and correct plat of Lots 1 and west part of Lot 3 in the fractional Section 33 in Township 68 N. of Range 43, West of the 5th P.M. The accretions of lands as shown above is as surveyed by me, and said accretions are described as follows: Commencing at a point on the original bank of Missouri River 17.80 chains south of the N.W. corner of Lot 2 of Government Survey Thence N. 25° W. 25.00 chains to the corner of Lot 2, thence N. 72° W. 2.16 ch, thence S. 70° W. 7.00 ch, thence S. 72° W. 25.00 chains, thence S. 72° W. 5.12 ch to S.E. corner of Lot 2, thence S. 72° W. 2.16 ch, thence S. 70° W. 7.00 ch, thence S. 72° W. 11 ch, to the place of beginning. Containing in all 54.76 Acres, the above includes only the accretion of land to Lot 1 & 2 and the accretion to Lot 3 of Lot 2 as shown above and marked in Red ink.

Done at the county of Des Moines this 18th day of November 1889.
 H. S. Gagnier,
 Platting Party bound & Officially.