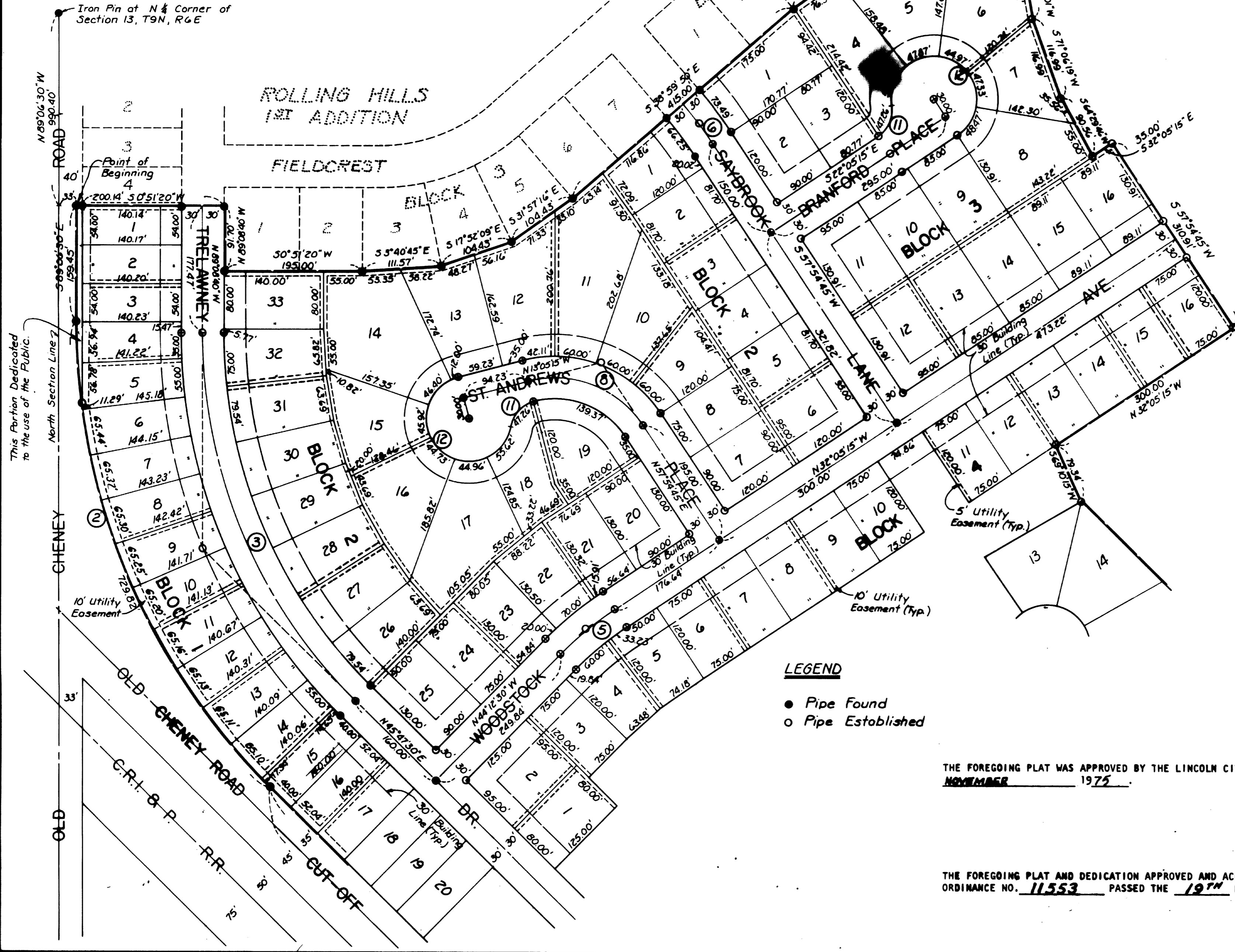


SKYLINE ROLLING HILLS 2ND ADDITION

Scale: 1" = 100'



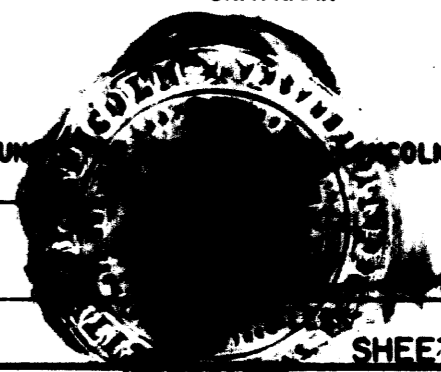
CURVE DATA

① Δ = 17° 56' 00" T = 136.36' R = 864.20' D = 6.62992° L = 270.49'	⑦ Δ = 90° 00' T = 150.00' R = 150.00' D = 38.19719° L = 235.62'
② Δ = 45° 06' 00" T = 385.00' R = 927.18' D = 6.17957° L = 729.82'	⑧ Δ = 71° 00' T = 106.99' R = 150.00' D = 38.19719° L = 185.87'
③ Δ = 45° 03' 50" T = 303.91' R = 732.55' D = 7.82142° L = 576.15'	⑨ Δ = 34° 14' T = 13.55' R = 44.00' D = 130.21768° L = 26.29'
④ Δ = 90° 00' T = 200.00' R = 200.00' D = 28.64789° L = 314.15'	⑩ Δ = 248° 28' T = 88.18' R = 60.00' D = 95.49297° L = 260.19'
⑤ Δ = 12° 07' 15" T = 50.00' R = 470.94' D = 12.16626° L = 99.62'	⑪ Δ = 64° 58' 16" T = 28.02' R = 44.00' D = 130.21768° L = 49.89'
⑥ Δ = 6° 54' 35" T = 35.00' R = 579.74' D = 9.88301° L = 69.91'	⑫ Δ = 244° 58' 16" T = -94.23' R = 60.00' D = 95.49297° L = 256.53'
	⑬ Δ = 14° 00' 00" T = 40.00' R = 325.77' D = 17.58780° L = 79.60'

LEGEND
 ● Pipe Found
 ○ Pipe Established

APPROVAL
 THE FOREGOING PLAT WAS APPROVED BY THE LINCOLN CITY-LANCASTER COUNTY PLANNING COMMISSION ON THIS 26TH DAY OF NOVEMBER 1975.
 ATTEST: *[Signature]*
 CHAIRMAN

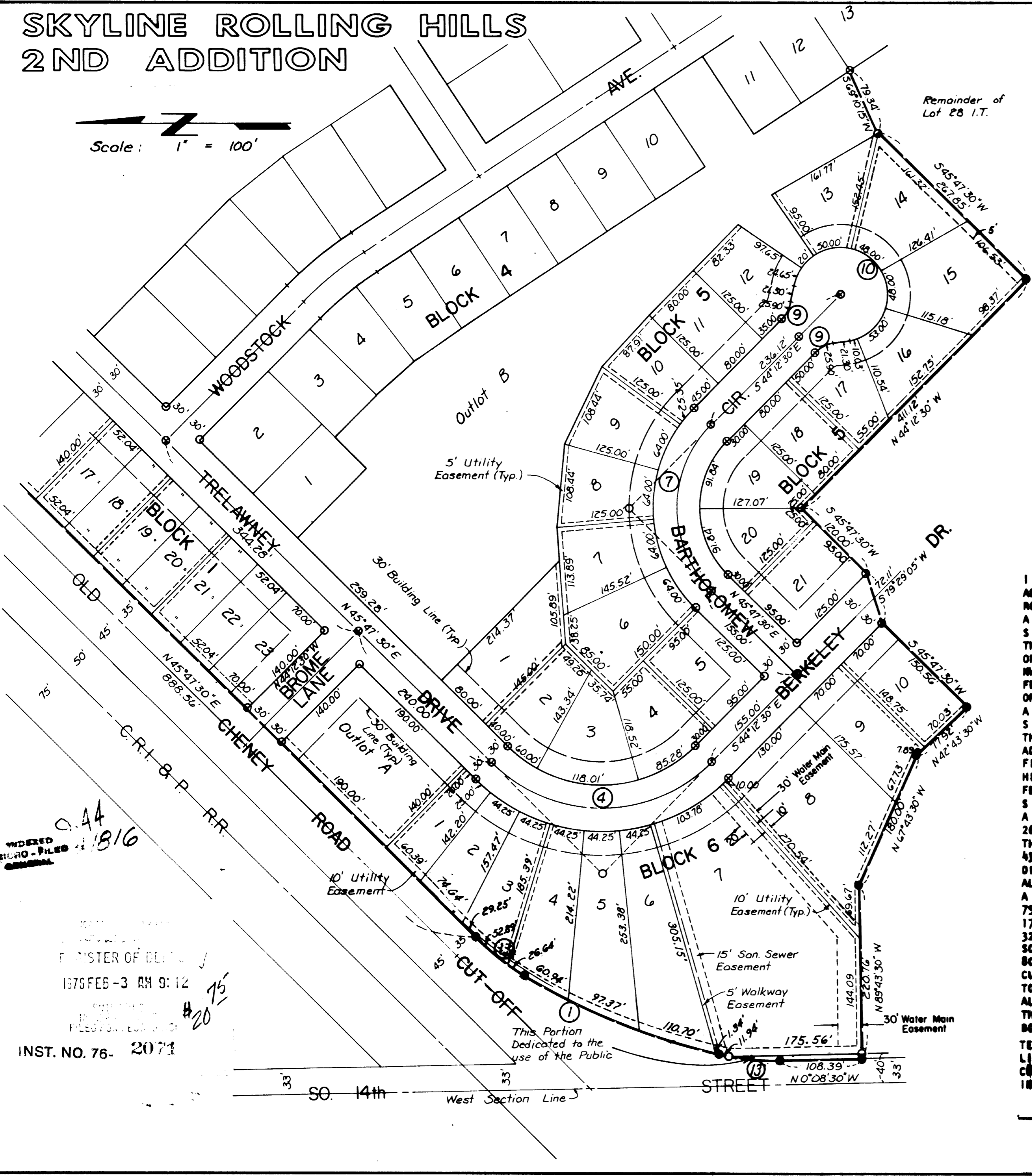
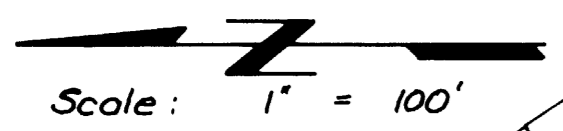
ACCEPTANCE
 THE FOREGOING PLAT AND DEDICATION APPROVED AND ACCEPTED BY THE CITY COUNCIL OF LINCOLN, NEBRASKA BY ORDINANCE NO. 11553 PASSED THE 19TH DAY OF January
 ATTEST: *[Signature]*



SKYLINE ROLLING HILLS 2ND ADDITION

DEDICATION

44A



THE FOREGOING PLAT, SKYLINE ROLLING HILLS SECOND ADDITION, A SUBDIVISION OF A PORTION OF LOTS 24 AND 28 I.T., LOCATED IN THE NW 1/4 OF SECTION 13, T9N, R6E OF THE 6TH P.M., LANCASTER COUNTY, NEBRASKA AND MORE PARTICULARLY DESCRIBED IN THE SURVEYOR'S CERTIFICATE. THIS DEDICATION IS MADE WITH THE FREE CONSENT AND IN ACCORDANCE WITH THE DESIRE OF THE UNDERSIGNED SOLE OWNER AND PROPRIETORS AND THE EASEMENTS SHOWN THEREON ARE HEREBY GRANTED IN PERPETUITY TO THE CITY OF LINCOLN, NEBRASKA, THE LINCOLN TELEPHONE AND TELEGRAPH CO. AND OTHER PUBLIC UTILITIES, THEIR SUCCESSORS AND ASSIGNS TO CONSTRUCT, OPERATE, MAINTAIN, REPAIR AND REPLACE STORM SEWER, SANITARY SEWER, WATER MAINS, CONDUITS, BURIED CABLES, WIRES, POLES, COMMERCIAL ANTENNA TELEVISION FACILITIES AND ALL APPURTENANCES THERETO, OVER, UPON OR UNDER THE EASEMENTS AS SHOWN ON THE FOREGOING PLAT, THE STREETS SHOWN THEREON ARE HEREBY DEDICATED TO THE USE OF THE PUBLIC. ALL UTILITY EASEMENTS ARE 10.00' IN WIDTH CENTERED ON LOT LINE UNLESS OTHERWISE SHOWN. THE SUBDIVIDER, HIS SUCCESSORS AND ASSIGNS RELINQUISH TO THE CITY OF LINCOLN NEBRASKA THE RIGHT OF DIRECT VEHICULAR ACCESS TO OLD CHENEY ROAD, OLD CHENEY ROAD CUT-OFF, BROMLEY LANE AND SOUTH 14TH STREET FROM ANY PROPERTY WITHIN THIS SUBDIVISION WHICH ABUTTS ON SAID STREET.

WITNESS OUR HANDS THIS 26th DAY OF NOVEMBER 1975.

By F. Pace Woods II
F. PACE WOODS II

ACKNOWLEDGMENT OF NOTARY

STATE OF NEBRASKA)
COUNTY OF LANCASTER) ss

ON THIS 26th DAY OF November 1975, BEFORE ME, THE UNDERSIGNED, A NOTARY PUBLIC, DULY COMMISSIONED, QUALIFIED AND RESIDING IN SAID COUNTY, PERSONALLY CAME F. PACE WOODS II TO ME PERSONALLY KNOWN TO BE THE IDENTICAL PERSON WHOSE NAME IS AFFIXED TO THE FOREGOING INSTRUMENT AS OWNER OF SKYLINE ROLLING HILLS SECOND ADDITION, AND HE ACKNOWLEDGED THE SAME TO BE HIS VOLUNTARY ACT AND DEED.

Rose A. Rosenstock
NOTARY PUBLIC

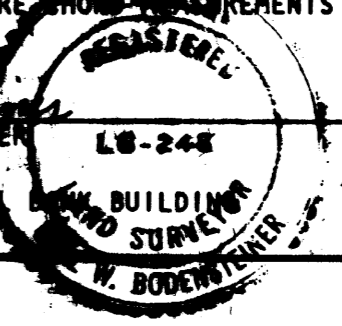
Rose A. Rosenstock
GENERAL NOTARIAL
STATE OF NEBRASKA
COMMISSION EXPIRES
August 16, 1979

MY COMMISSION EXPIRES ON THE 16th DAY OF August 1979.

I HEREBY CERTIFY THAT I HAVE ACCURATELY SURVEYED THE SUBDIVISION TO BE KNOWN AS SKYLINE ROLLING HILLS SECOND ADDITION, WHOSE METES AND BOUNDS DESCRIPTION IS AS FOLLOWS: COMMENCING AT THE NW CORNER OF SECTION 13, T9N, R6E OF THE 6TH P.M., LANCASTER COUNTY, NEBRASKA, THENCE N 89°06'30" W ALONG THE NORTH LINE OF SAID SECTION 13, A DISTANCE OF 990.40 FEET; THENCE S 0°51'20" W, A DISTANCE OF 33.00 FEET TO THE POINT OF BEGINNING, THENCE S 0°51'20" W, A DISTANCE OF 7.00 FEET TO THE NW CORNER OF LOT 4, BLOCK 1, SKYLINE ROLLING HILLS FIRST ADDITION; THENCE S 0°51'20" W, A DISTANCE OF 200.14 FEET; THENCE N 89°08'40" W, A DISTANCE OF 91.70 FEET TO THE NW CORNER OF LOT 1, BLOCK 3, SKYLINE ROLLING HILLS FIRST ADDITION; THENCE S 0°51'20" W, A DISTANCE OF 108.00 FEET TO THE NW CORNER OF LOT 3, BLOCK 3, SKYLINE ROLLING HILLS FIRST ADDITION; THENCE S 3°00'45" E, A DISTANCE OF 111.57 FEET TO THE NW CORNER OF LOT 4, BLOCK 3, SKYLINE ROLLING HILLS FIRST ADDITION; THENCE S 17°31'09" E, A DISTANCE OF 104.43 FEET TO THE NW CORNER OF LOT 5, BLOCK 3, SKYLINE ROLLING HILLS FIRST ADDITION; THENCE S 2°16'16" E, A DISTANCE OF 104.43 FEET TO THE NW CORNER OF LOT 6, BLOCK 3, SKYLINE ROLLING HILLS FIRST ADDITION; THENCE S 38°59'50" E, A DISTANCE OF 415.00 FEET TO THE NW CORNER OF LOT 3, BLOCK 4, SKYLINE ROLLING HILLS FIRST ADDITION; THENCE S 34°29'45" E, A DISTANCE OF 76.32 FEET TO THE NW CORNER OF LOT 4, BLOCK 4, SKYLINE ROLLING HILLS FIRST ADDITION; THENCE S 19°43'50" E, A DISTANCE OF 69.59 FEET TO THE NW CORNER OF LOT 5, BLOCK 4, SKYLINE ROLLING HILLS FIRST ADDITION; THENCE S 5°01'13" E, A DISTANCE OF 74.08 FEET TO THE SW CORNER OF LOT 5, BLOCK 4, SKYLINE ROLLING HILLS FIRST ADDITION; THENCE S 0°05'15" E, A DISTANCE OF 125.00 FEET; THENCE S 82°02'01" W, A DISTANCE OF 98.42 FEET; THENCE S 71°06'19" W, A DISTANCE OF 116.99 FEET; THENCE S 64°29'46" W, A DISTANCE OF 98.56 FEET; THENCE S 32°05'15" E, A DISTANCE OF 35.00 FEET; THENCE S 57°54'45" W, A DISTANCE OF 310.91 FEET; THENCE N 32°05'15" W, A DISTANCE OF 300.00 FEET; THENCE S 69°10'15" W, A DISTANCE OF 79.34 FEET; THENCE S 45°47'30" W, A DISTANCE OF 267.85 FEET; THENCE N 44°12'30" W, A DISTANCE OF 411.12 FEET; THENCE S 45°47'30" W, A DISTANCE OF 120.00 FEET; THENCE S 79°29'05" W, A DISTANCE OF 72.11 FEET; THENCE S 45°47'30" W, A DISTANCE OF 150.56 FEET; THENCE N 42°43'30" W, A DISTANCE OF 77.92 FEET; THENCE N 67°43'30" W, A DISTANCE OF 180.00 FEET; THENCE N 89°43'30" W, A DISTANCE OF 220.76 FEET TO A POINT 33.00 FEET EAST OF THE WEST LINE OF SAID SECTION 13, THENCE N 0°08'30" W ALONG A LINE 33.00 FEET EAST OF AND PARALLEL TO THE WEST LINE OF SAID SECTION 13 A DISTANCE OF 108.39 FEET TO A POINT OF CURVATURE, THENCE RIGHT ON A CURVE WHOSE RADIUS IS 325.77 FEET AND DELTA IS 14°00'00", A DISTANCE OF 79.60 FEET TO A POINT OF COMPOUND CURVATURE, THENCE RIGHT ON A CURVE WHOSE RADIUS IS 864.20 FEET AND DELTA IS 17°56'00", A DISTANCE OF 270.49 FEET TO A POINT OF COMPOUND CURVATURE, THENCE RIGHT ON A CURVE WHOSE RADIUS IS 325.77 FEET AND DELTA IS 14°00'00", A DISTANCE OF 79.60 FEET TO A POINT OF TANGENCY, SAID POINT BEING 80.00 FEET SOUTHEAST OF THE SOUTHEAST RIGHT-OF-WAY LINE OF THE C.R.I. & P RAILROAD; THENCE N 45°47'30" E, ALONG THE LINE 80.00 FEET SOUTHEAST OF AND PARALLEL TO SAID SOUTHEAST RIGHT-OF-WAY, A DISTANCE OF 888.96 FEET TO A POINT OF CURVATURE; THENCE RIGHT ON A CURVE WHOSE RADIUS IS 927.18 FEET AND DELTA IS 45°06'00" A DISTANCE OF 729.82 FEET TO A POINT OF TANGENCY, SAID POINT BEING 33.00 FEET SOUTH OF THE NORTH LINE OF SAID SECTION 13; THENCE S 89°06'30" E ALONG THE LINE 33.00 FEET SOUTH OF AND PARALLEL TO THE NORTH LINE OF SAID SECTION 13, A DISTANCE OF 159.45 FEET TO THE POINT OF BEGINNING, SAID TRACT CONTAINS 43.56 ACRES. IRON PIPE MONUMENTS HAVE BEEN PLACED OR FOUND AT ALL BOUNDARY CORNERS, STREET INTERSECTIONS, BLOCK CORNERS AND POINT OF TANGENCY AND CURVATURE AS SHOWN ON THE PLAT. TEMPORARY MARKERS HAVE BEEN PLACED AT ALL LOT CORNERS AND THE LOT SUBDIVIDER (OWNER) WILL FURNISH TO THE CITY OF LINCOLN A STAKING BOND TO INSURE THE PLACING OF IRON PIPE AT ALL CORNERS PRIOR TO THE CONSTRUCTION ON OR CONVEYANCE OF ANY LOT SHOWN ON THIS PLAT. ALL DIMENSIONS ARE IN FEET AND DECIMALS OF A FOOT.

1 December 1975
DATE

Carl W. Bodenstein
CARL W. BODENSTEIN
OLSSON ASSOCIATES
1701 FIRST NATIONAL
LINCOLN, NEBRASKA



LS-244
LAND SURVEYOR'S NUMBER

INDEXED
MICRO-FILMED
GENERAL

0.44
11816

REGISTER OF DEEDS
1975 FEB-3 AM 9:12

INST. NO. 76- 2071