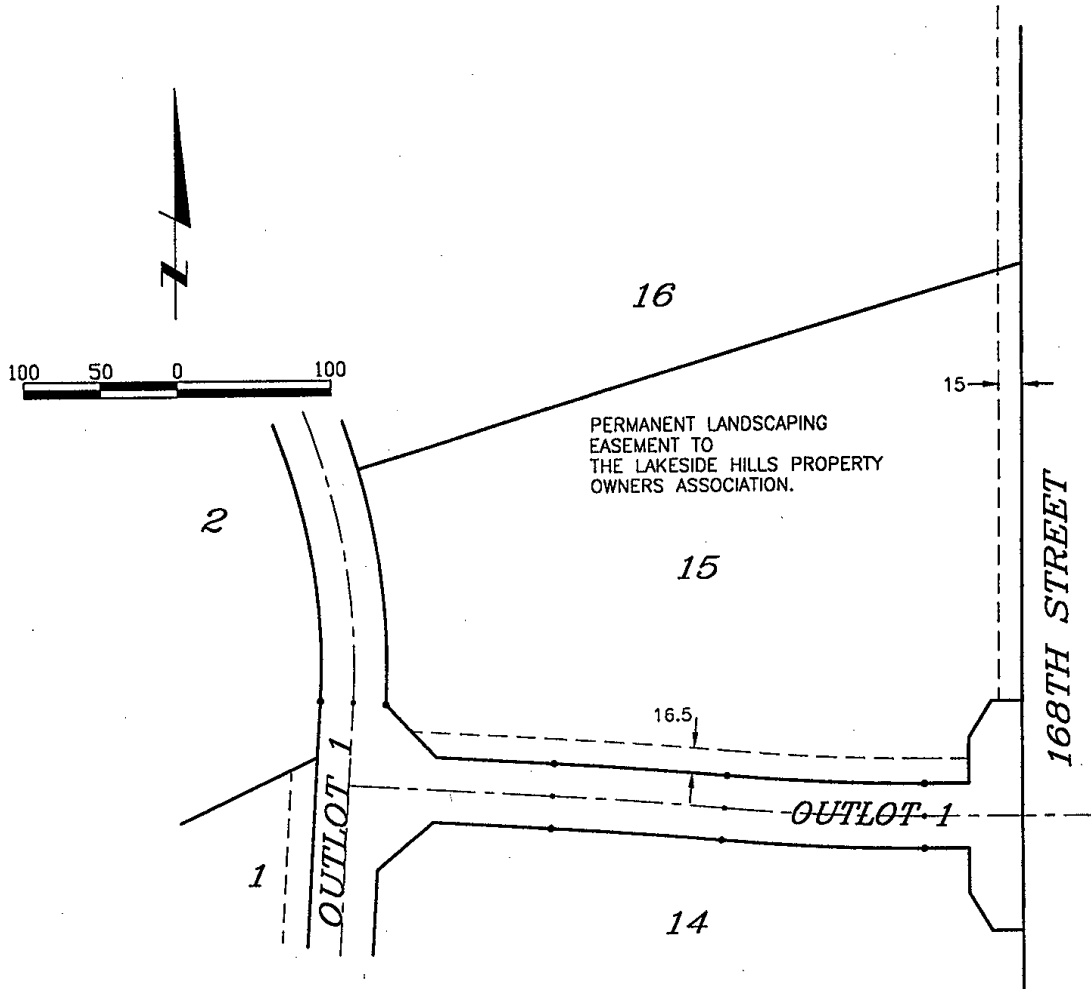


EXHIBIT "L"

LEGAL DESCRIPTION

A permanent easement for the construction and maintenance of landscaping over the South sixteen and a half feet (16.5') abutting Outlot 1 AND over the East fifteen foot (15') abutting 168th Street of Lot 15, LAKESIDE HILLS, a subdivision, as surveyed, platted and recorded in Douglas County, Nebraska.



89014\8914B110 LOT15

Book

Page

Date MAR-4-1997

Dwn.By AET

Job Number 89014-6573



lamp, ryneason & associates, inc.
engineers surveyors planners

14747 california street

omaha, nebraska 68154-1078

402-498-2498

FAX 402-498-2730

EXHIBIT "L"