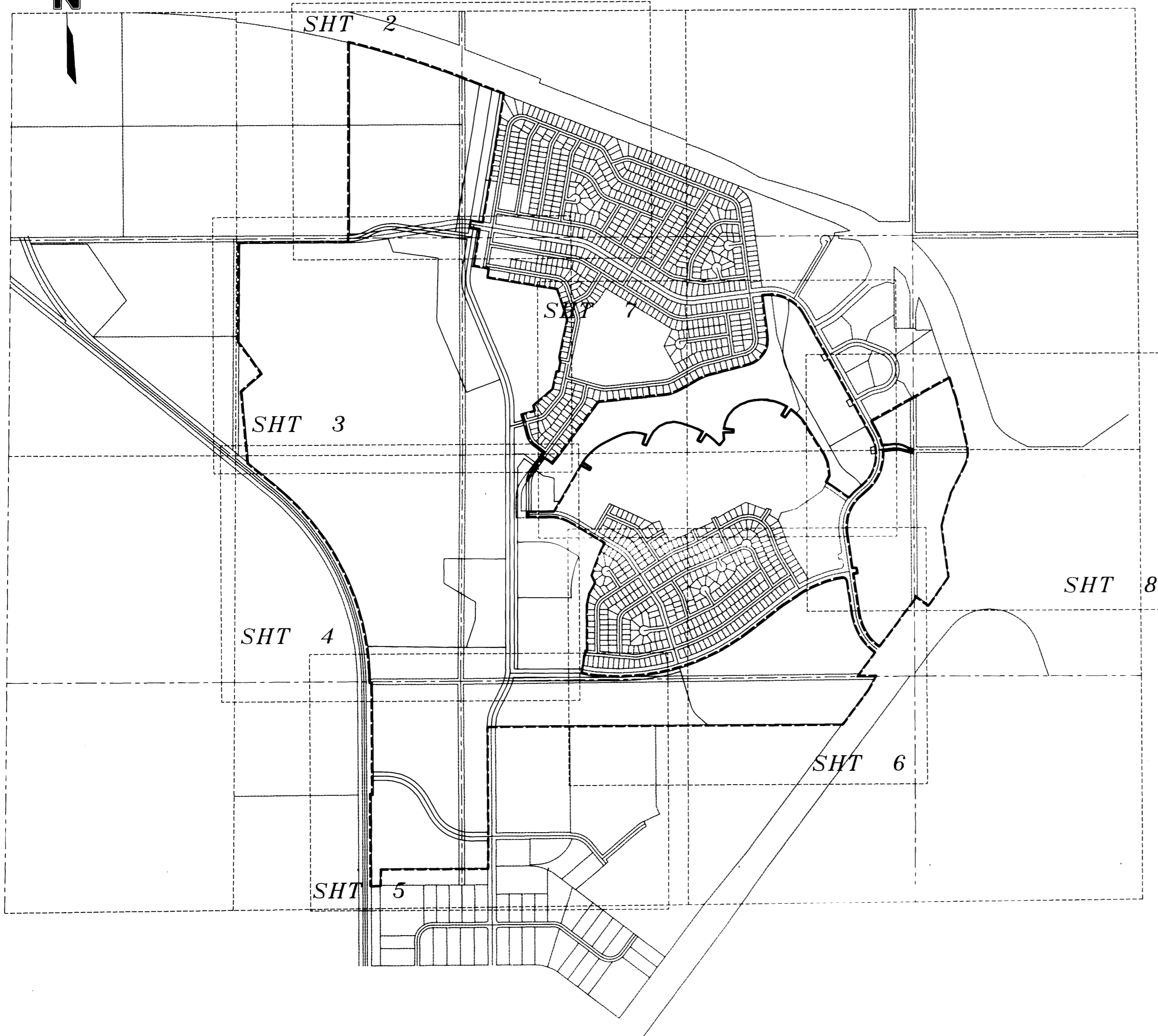


COVER SHEET

HIGHLANDS COALITION FINAL PLAT



INDEX OF SHEETS

- SHEET 1 - COVER SHEET
- SHEET 2 - FINAL PLAT
- SHEET 3 - FINAL PLAT
- SHEET 4 - FINAL PLAT
- SHEET 5 - FINAL PLAT
- SHEET 6 - FINAL PLAT
- SHEET 7 - FINAL PLAT
- SHEET 8 - FINAL PLAT
- SHEET 9 - LEGAL DOCUMENTS
- SHEET 10 - LEGAL DOCUMENTS

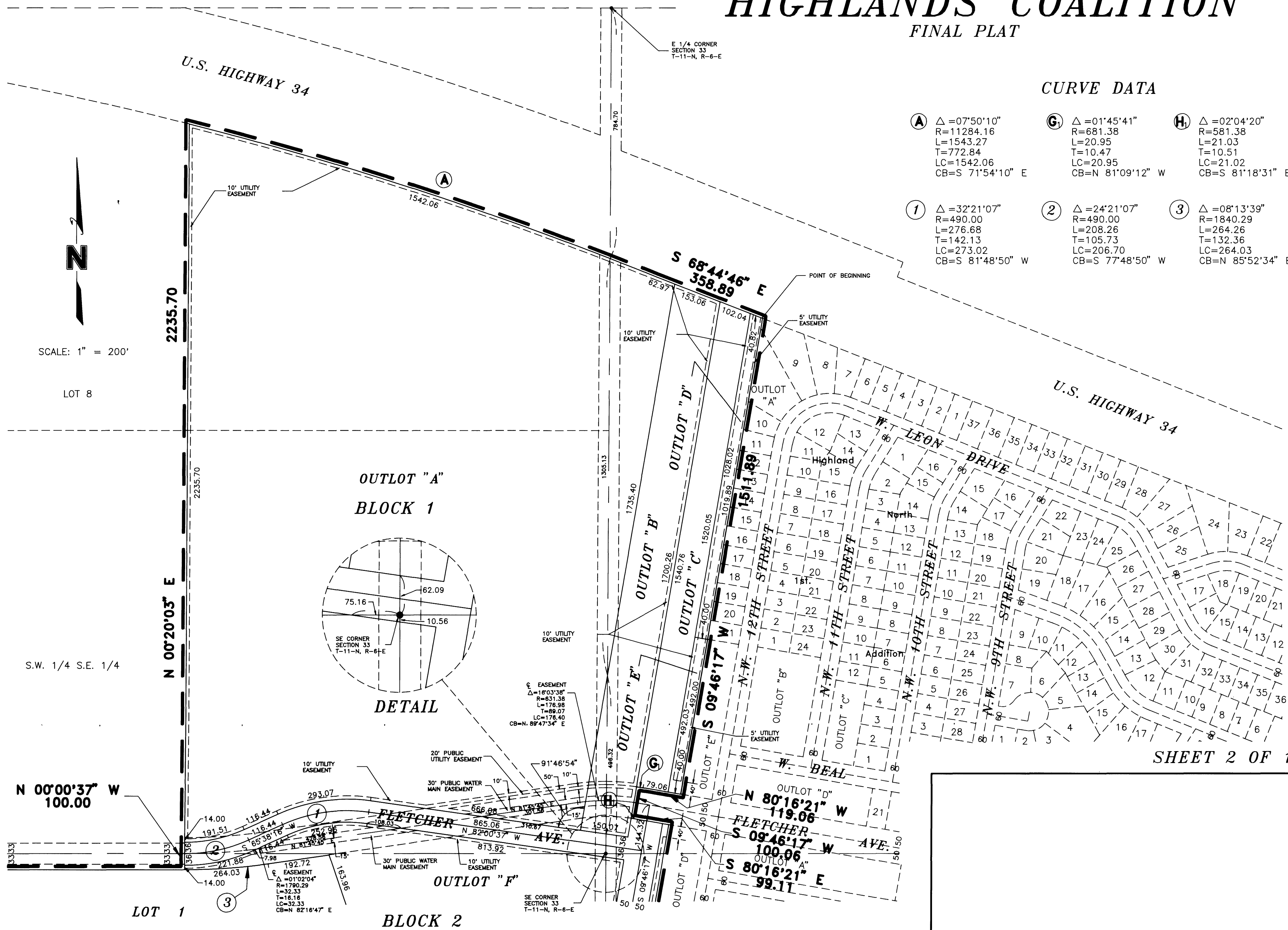
SHEET 1 OF 10

HIGHLANDS COALITION

FINAL PLAT

CURVE DATA

Ⓐ $\Delta = 07^{\circ}50'10''$ R=11284.16 L=1543.27 T=772.84 LC=1542.06 CB=S 71°54'10" E	Ⓒ $\Delta = 01^{\circ}45'41''$ R=681.38 L=20.95 T=10.47 LC=20.95 CB=N 81°09'12" W	Ⓓ $\Delta = 02^{\circ}04'20''$ R=581.38 L=21.03 T=10.51 LC=21.02 CB=S 81°18'31" E
① $\Delta = 32^{\circ}21'07''$ R=490.00 L=276.68 T=142.13 LC=273.02 CB=S 81°48'50" W	② $\Delta = 24^{\circ}21'07''$ R=490.00 L=208.26 T=105.73 LC=206.70 CB=S 77°48'50" W	③ $\Delta = 08^{\circ}13'39''$ R=1840.29 L=264.26 T=132.36 LC=264.03 CB=N 85°52'34" E

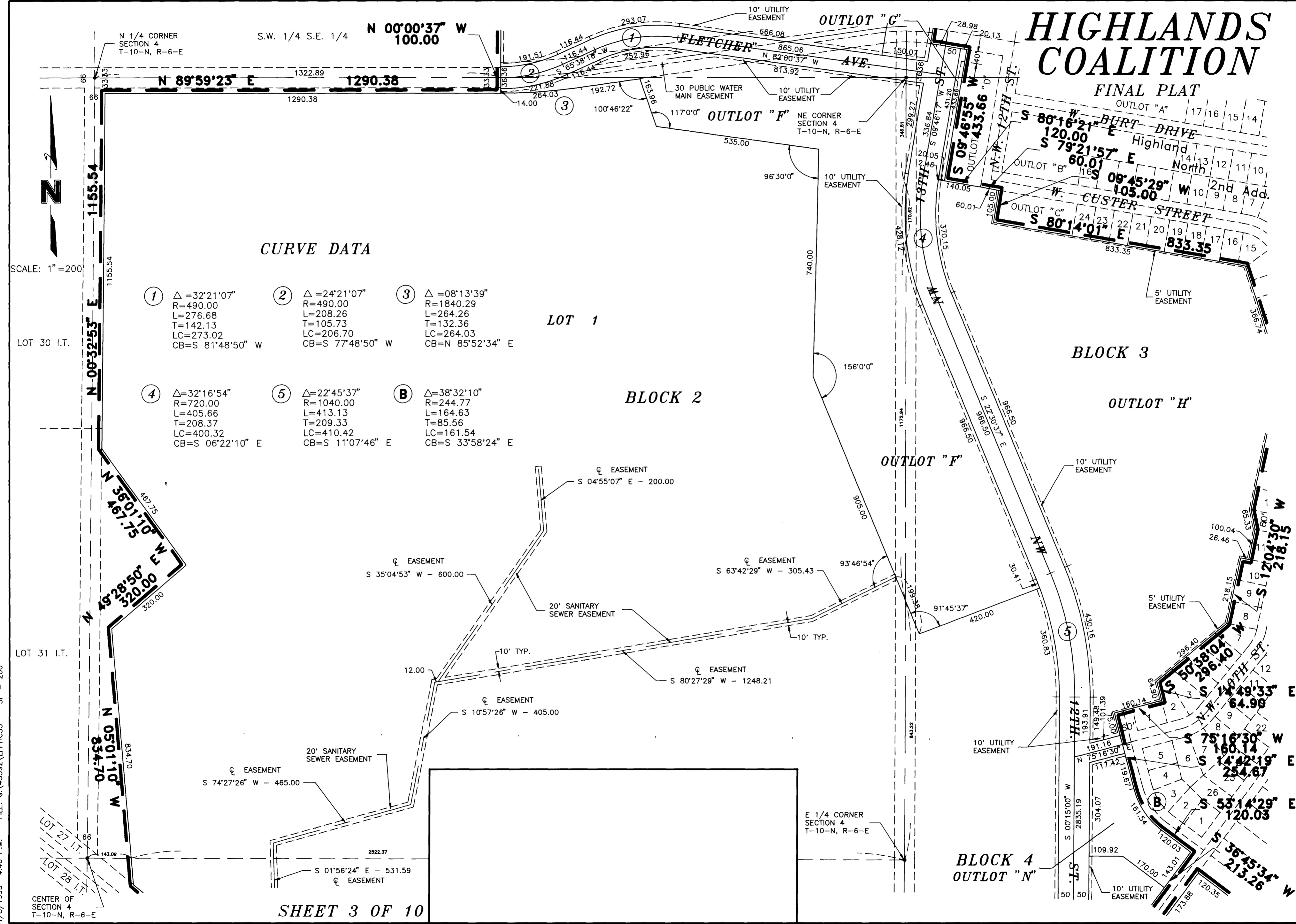


SHEET 2 OF 10

4/8/1993 4:38 P.M. FILE: G:\45592\LFPHCS2 SF = 200

HIGHLANDS COALITION

FINAL PLAT



CURVE DATA

①	$\Delta = 32^{\circ}21'07''$ R=490.00 L=276.68 T=142.13 LC=273.02 CB=S 81°48'50" W	②	$\Delta = 24^{\circ}21'07''$ R=490.00 L=208.26 T=105.73 LC=206.70 CB=S 77°48'50" W	③	$\Delta = 08^{\circ}13'39''$ R=1840.29 L=264.26 T=132.36 LC=264.03 CB=N 85°52'34" E
④	$\Delta = 32^{\circ}16'54''$ R=720.00 L=405.66 T=208.37 LC=400.32 CB=S 06°22'10" E	⑤	$\Delta = 22^{\circ}45'37''$ R=1040.00 L=413.13 T=209.33 LC=410.42 CB=S 11°07'46" E	Ⓑ	$\Delta = 38^{\circ}32'10''$ R=244.77 L=164.63 T=85.56 LC=161.54 CB=S 33°58'24" E

LOT 1

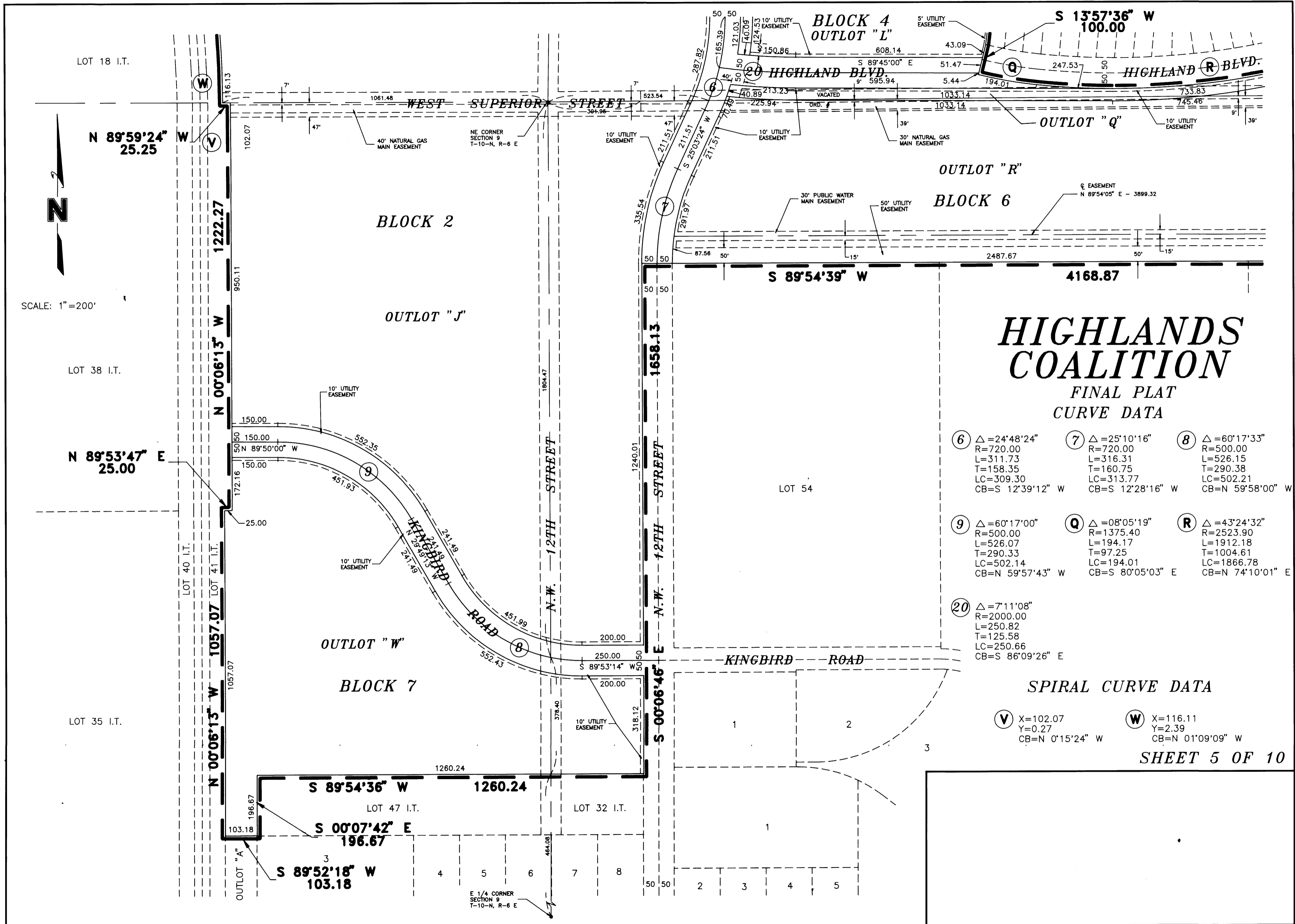
BLOCK 2

BLOCK 3

OUTLOT "H"

BLOCK 4
OUTLOT "N"

4/8/1993 4:40 P.M. FILE: G:\45592\LFPHCS3 SF = 200



HIGHLANDS COALITION

FINAL PLAT CURVE DATA

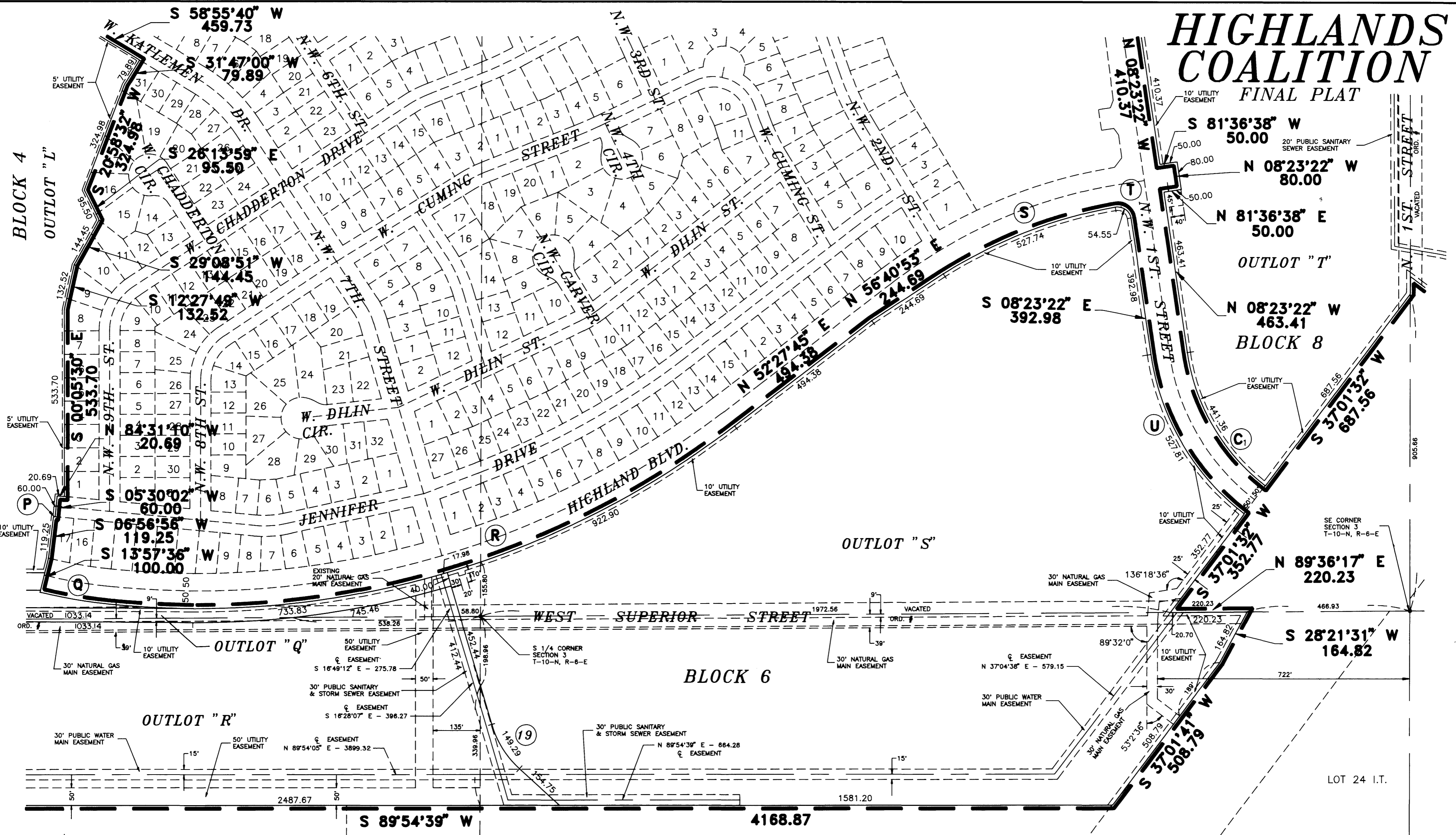
<p>⑥ Δ = 24°48'24" R = 720.00 L = 311.73 T = 158.35 LC = 309.30 CB = S 12°39'12" W</p>	<p>⑦ Δ = 25°10'16" R = 720.00 L = 316.31 T = 160.75 LC = 313.77 CB = S 12°28'16" W</p>	<p>⑧ Δ = 60°17'33" R = 500.00 L = 526.15 T = 290.38 LC = 502.21 CB = N 59°58'00" W</p>
<p>⑨ Δ = 60°17'00" R = 500.00 L = 526.07 T = 290.33 LC = 502.14 CB = N 59°57'43" W</p>	<p>Q Δ = 08°05'19" R = 1375.40 L = 194.17 T = 97.25 LC = 194.01 CB = S 80°05'03" E</p>	<p>R Δ = 43°24'32" R = 2523.90 L = 1912.18 T = 1004.61 LC = 1866.78 CB = N 74°10'01" E</p>
<p>⑳ Δ = 7°11'08" R = 2000.00 L = 250.82 T = 125.58 LC = 250.66 CB = S 86°09'26" E</p>		

SPIRAL CURVE DATA

<p>V X = 102.07 Y = 0.27 CB = N 0°15'24" W</p>	<p>W X = 116.11 Y = 2.39 CB = N 01°09'09" W</p>
---	--

HIGHLANDS COALITION

FINAL PLAT



CURVE DATA

P $\Delta = 01^{\circ}19'34''$ R=201.76 L=4.67 T=2.34 LC=4.67 CB=N 83°46'38" W	Q $\Delta = 08^{\circ}05'19''$ R=1375.40 L=194.17 T=97.25 LC=194.01 CB=S 80°05'03" E	R $\Delta = 43^{\circ}24'32''$ R=2523.90 L=1912.18 T=1004.61 LC=1866.78 CB=N 74°10'01" E	19 $\Delta = 31^{\circ}30'00''$ R=275.00 L=151.19 T=77.56 LC=149.29 CB=S 32°13'05" E
S $\Delta = 22^{\circ}03'34''$ R=1379.21 L=531.01 T=268.83 LC=527.74 CB=N 68°50'20" E	T $\Delta = 91^{\circ}44'31''$ R=38.00 L=60.85 T=39.17 LC=54.55 CB=S 54°15'38" E	U $\Delta = 44^{\circ}20'14''$ R=699.40 L=541.22 T=284.97 LC=527.81 CB=S 30°33'29" E	C1 $\Delta = 44^{\circ}17'35''$ R=585.39 L=452.54 T=238.26 LC=441.36 CB=N 30°32'10" W

SHEET 6 OF 10



SCALE: 1"=200'

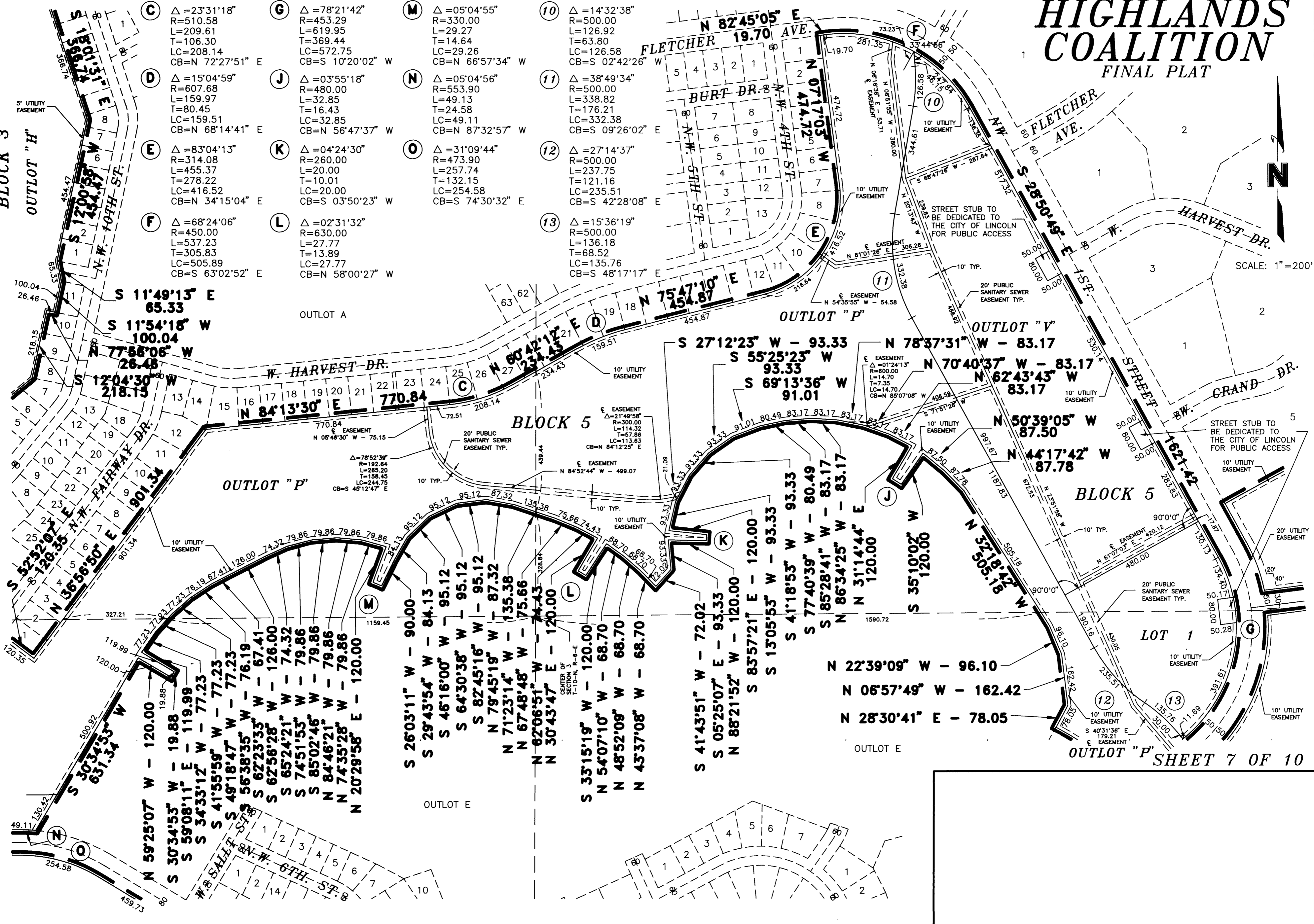
4/8/1993 4:49 P.M. FILE: G:\45592\LPHCS6 SF = 200

HIGHLANDS COALITION

FINAL PLAT

CURVE DATA

(C) Δ = 23°31'18" R = 510.58 L = 209.61 T = 106.30 LC = 208.14 CB = N 72°27'51" E	(G) Δ = 78°21'42" R = 453.29 L = 619.95 T = 369.44 LC = 572.75 CB = S 10°20'02" W	(M) Δ = 05°04'55" R = 330.00 L = 29.27 T = 14.64 LC = 29.26 CB = N 66°57'34" W	(10) Δ = 14°32'38" R = 500.00 L = 126.92 T = 63.80 LC = 126.58 CB = S 02°42'26" W
(D) Δ = 15°04'59" R = 607.68 L = 159.97 T = 80.45 LC = 159.51 CB = N 68°14'41" E	(J) Δ = 03°55'18" R = 480.00 L = 32.85 T = 16.43 LC = 32.85 CB = N 56°47'37" W	(N) Δ = 05°04'56" R = 553.90 L = 49.13 T = 24.58 LC = 49.11 CB = N 87°32'57" W	(11) Δ = 38°49'34" R = 500.00 L = 338.82 T = 176.21 LC = 332.38 CB = S 09°26'02" E
(E) Δ = 83°04'13" R = 314.08 L = 455.37 T = 278.22 LC = 416.52 CB = N 34°15'04" E	(K) Δ = 04°24'30" R = 260.00 L = 20.00 T = 10.01 LC = 20.00 CB = S 03°50'23" W	(O) Δ = 31°09'44" R = 473.90 L = 257.74 T = 132.15 LC = 254.58 CB = S 74°30'32" E	(12) Δ = 27°14'37" R = 500.00 L = 237.75 T = 121.16 LC = 235.51 CB = S 42°28'08" E
(F) Δ = 68°24'06" R = 450.00 L = 537.23 T = 305.83 LC = 505.89 CB = S 63°02'52" E	(L) Δ = 02°31'32" R = 630.00 L = 27.77 T = 13.89 LC = 27.77 CB = N 58°00'27" W	(13) Δ = 15°36'19" R = 500.00 L = 136.18 T = 68.52 LC = 135.76 CB = S 48°17'17" E	



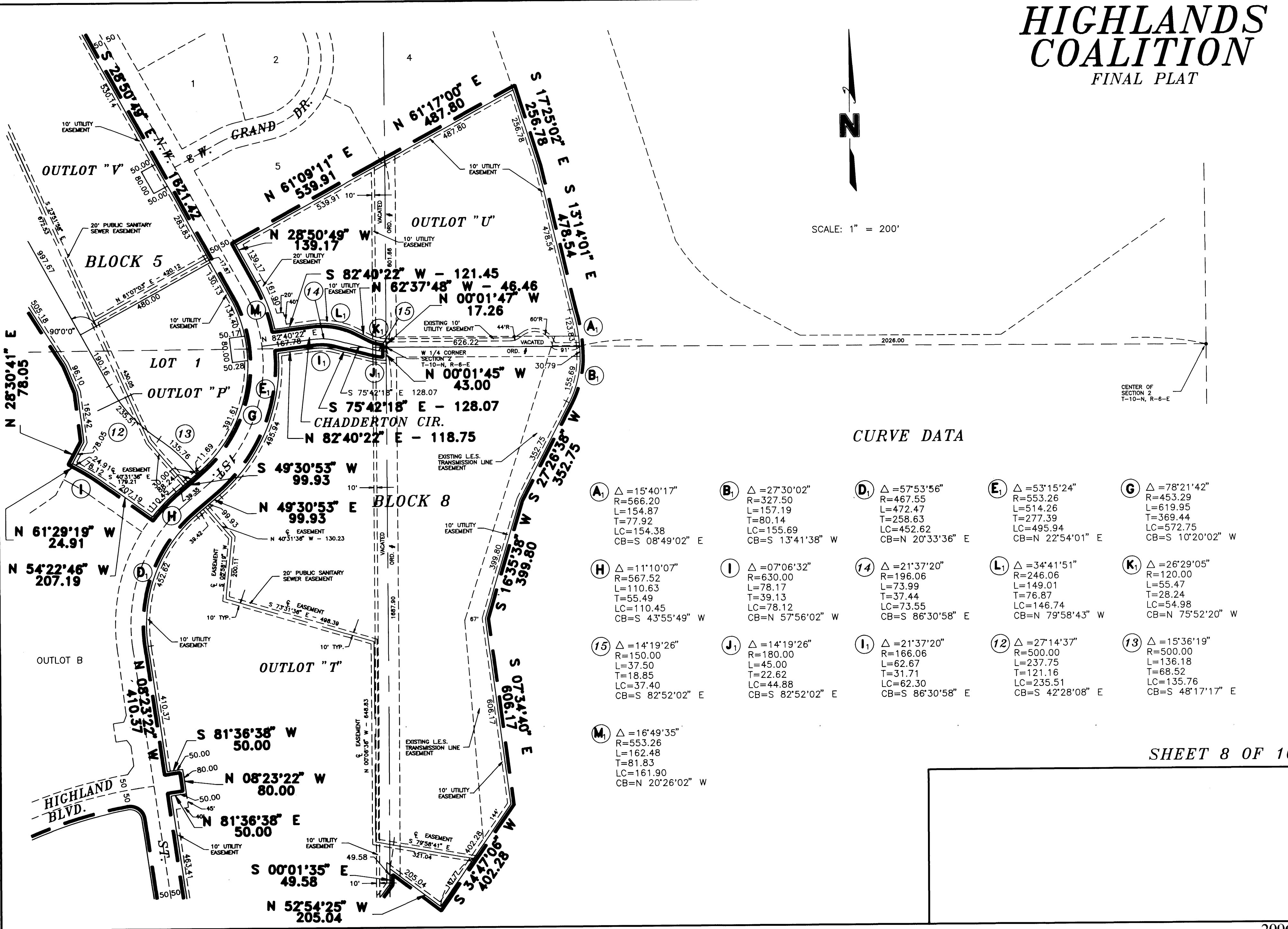
4/9/1993 7:52 A.M. FILE: G:\45592\LPHCST SF = 200

HIGHLANDS COALITION

FINAL PLAT



SCALE: 1" = 200'



CURVE DATA

A ₁ Δ = 15°40'17" R=566.20 L=154.87 T=77.92 LC=154.38 CB=S 08°49'02" E	B ₁ Δ = 27°30'02" R=327.50 L=157.19 T=80.14 LC=155.69 CB=S 13°41'38" W	D ₁ Δ = 57°53'56" R=467.55 L=472.47 T=258.63 LC=452.62 CB=N 20°33'36" E	E ₁ Δ = 53°15'24" R=553.26 L=514.26 T=277.39 LC=495.94 CB=N 22°54'01" E	G Δ = 78°21'42" R=453.29 L=619.95 T=369.44 LC=572.75 CB=S 10°20'02" W
H Δ = 11°10'07" R=567.52 L=110.63 T=55.49 LC=110.45 CB=S 43°55'49" W	I Δ = 07°06'32" R=630.00 L=78.17 T=39.13 LC=78.12 CB=N 57°56'02" W	14 Δ = 21°37'20" R=196.06 L=73.99 T=37.44 LC=73.55 CB=S 86°30'58" E	L ₁ Δ = 34°41'51" R=246.06 L=149.01 T=76.87 LC=146.74 CB=N 79°58'43" W	K ₁ Δ = 26°29'05" R=120.00 L=55.47 T=28.24 LC=54.98 CB=N 75°52'20" W
15 Δ = 14°19'26" R=150.00 L=37.50 T=18.85 LC=37.40 CB=S 82°52'02" E	J ₁ Δ = 14°19'26" R=180.00 L=45.00 T=22.62 LC=44.88 CB=S 82°52'02" E	I ₁ Δ = 21°37'20" R=166.06 L=62.67 T=31.71 LC=62.30 CB=S 86°30'58" E	12 Δ = 27°14'37" R=500.00 L=237.75 T=121.16 LC=235.51 CB=S 42°28'08" E	13 Δ = 15°36'19" R=500.00 L=136.18 T=68.52 LC=135.76 CB=S 48°17'17" E
M Δ = 16°49'35" R=553.26 L=162.48 T=81.83 LC=161.90 CB=N 20°26'02" W				

CENTER OF SECTION 2
T-10-N, R-6-E

SHEET 8 OF 10

SURVEYORS CERTIFICATE

I HEREBY CERTIFY THAT I HAVE CAUSED TO BE SURVEYED THE SUBDIVISION TO BE KNOWN AS HIGHLANDS COALITION, A SUBDIVISION COMPOSED OF THE FOLLOWING LOT 48 I.T. OF SECTION 9, TOWNSHIP 10 NORTH, RANGE 6 EAST, LOT 46 I.T., AND LOT 56 I.T. OF SECTION 10, TOWNSHIP 10 NORTH, RANGE 6 EAST, LOT 44 I.T. AND LOT 30 I.T. OF SECTION 2, TOWNSHIP 10 NORTH, RANGE 6 EAST, LOT 17 I.T., LOT 19 I.T., LOTS 1 THROUGH 6 & OUTLOT "A" HIGHLAND WOODS ADDITION, A PORTION OF THE EAST 1/2 OF SECTION 3, A PORTION OF THE SE 1/4 OF SECTION 3, A PORTION OF THE WEST 1/2 OF SECTION 3, OF SECTION 3, TOWNSHIP 10 NORTH, RANGE 6 EAST, LOT 23 I.T., LOT 24 I.T., LOT 32 I.T., A PORTION OF LOT 30 I.T., AND A PORTION LOT 31 I.T. OF SECTION 4, TOWNSHIP 10 NORTH, RANGE 6 EAST, LOT 20 I.T., LOT 6 I.T., AND A PORTION OF THE SE 1/4 OF SECTION 33, TOWNSHIP 11 NORTH, RANGE 6 EAST, AND A PORTION OF THE SW 1/4 OF SECTION 34, TOWNSHIP 11 NORTH, RANGE 6 EAST OF THE 6TH. P.M., CITY OF LINCOLN, LANCASTER COUNTY, NEBRASKA, AND MORE PARTICULARLY DESCRIBED AS FOLLOWS:

COMMENCING FROM THE NW CORNER OF LOT 9 BLK 3 HIGHLAND NORTH FIRST ADDITION, SAID POINT ALSO BEING THE TRUE POINT OF BEGINNING, THENCE SOUTH 9 DEGREES 46 MINUTES 17 SECONDS WEST, ALONG THE WEST LINE OF LOTS 9 THROUGH 21 AND OUTLOT A & E A DISTANCE OF 1511.89 FEET TO THE SW CORNER OF SAID OUTLOT E, THENCE NORTH 80 DEGREES 16 MINUTES 21 SECONDS WEST, ALONG THE NORTH ROW LINE OF FLETCHER AVE. A DISTANCE OF 119.06 FEET TO A POINT OF CURVATURE, THENCE AROUND A CURVE IN A COUNTERCLOCKWISE DIRECTION HAVING A DELTA ANGLE OF 1 DEGREE 45 MINUTES 41 SECONDS, AN ARC DISTANCE OF 20.95 FEET, A RADIUS OF 681.38 FEET, AND A CHORD OF NORTH 81 DEGREES 09 MINUTES 12 SECONDS WEST, A DISTANCE OF 20.95 FEET TO A POINT, THENCE SOUTH 9 DEGREES 46 MINUTES 17 SECONDS WEST, A DISTANCE OF 100.06 FEET TO A POINT, THENCE AROUND A CURVE IN A CLOCKWISE DIRECTION HAVING A DELTA ANGLE OF 2 DEGREES 04 MINUTES 20 SECONDS, AN ARC DISTANCE OF 21.03 FEET, A RADIUS OF 581.38 FEET, AND A CHORD OF SOUTH 81 DEGREE 18 MINUTES 31 SECONDS EAST, A DISTANCE OF 21.02 FEET TO A POINT, THENCE SOUTH 80 DEGREES 16 MINUTES 21 SECONDS EAST, ALONG THE SOUTH ROW LINE OF FLETCHER AVE. A DISTANCE OF 99.11 FEET TO THE NW CORNER OF OUTLOT D HIGHLAND NORTH 2ND ADDITION, THENCE SOUTH 9 DEGREES 46 MINUTES 55 SECONDS WEST, ALONG THE WEST LINE OF SAID OUTLOT D A DISTANCE OF 433.66 FEET TO THE SW CORNER OF SAID OUTLOT D, THENCE SOUTH 80 DEGREES 16 MINUTES 21 SECONDS EAST ALONG THE SOUTH LINE OF SAID OUTLOT D A DISTANCE OF 120.00 FEET TO THE SE CORNER OF SAID OUTLOT D, THENCE SOUTH 79 DEGREES 21 MINUTES 57 SECONDS EAST, ALONG THE SOUTH ROW LINE OF WEST CUSTER STREET A DISTANCE OF 60.01 FEET TO THE NW CORNER OF OUTLOT C HIGHLAND NORTH 2ND ADDITION, THENCE SOUTH 9 DEGREES 45 MINUTES 29 SECONDS WEST, ALONG THE WEST LINE OF OUTLOT C HIGHLAND NORTH 2ND ADDITION A DISTANCE OF 105.00 FEET TO THE SW CORNER OF SAID OUTLOT C, THENCE SOUTH 80 DEGREES 14 MINUTES 01 SECONDS EAST, ALONG THE SOUTH LINE OF SAID OUTLOT C AND LOTS 24 THROUGH 15 BLOCK 2 HIGHLAND NORTH 2ND ADDITION A DISTANCE OF 833.35 FEET TO THE NW CORNER OF LOT 14 BLK 2 HIGHLAND NORTH 2ND ADDITION, THENCE SOUTH 18 DEGREES 01 MINUTES 31 SECONDS EAST, ALONG THE WEST LINE OF LOTS 14 THROUGH 8 BLOCK 2 A DISTANCE OF 366.74 FEET TO A POINT, THENCE SOUTH 12 DEGREES 00 MINUTES 58 SECONDS WEST, ALONG THE WEST LINE OF LOTS 8 THROUGH 1 BLOCK 2 A DISTANCE OF 454.47 FEET TO THE SW CORNER OF SAID LOT 1, THENCE SOUTH 11 DEGREES 49 MINUTES 13 SECONDS EAST, ALONG THE WEST ROW LINE OF WEST HARVEST DRIVE A DISTANCE OF 65.33 FEET TO THE NW CORNER OF LOT 11 BLK 3 HIGHLAND NORTH 2ND ADDITION, THENCE SOUTH 11 DEGREES 54 MINUTES 18 SECONDS WEST, ALONG THE WEST LINE OF LOT 11 BLOCK 3 A DISTANCE OF 100.04 FEET TO THE SW CORNER OF SAID LOT 11, THENCE NORTH 77 DEGREES 56 MINUTES 06 SECONDS WEST, ALONG THE NORTH LINE OF LOT 10 BLOCK 3 A DISTANCE OF 26.46 FEET TO THE NW CORNER OF SAID LOT 10, THENCE SOUTH 12 DEGREES 04 MINUTES 30 SECONDS WEST, ALONG THE WEST LINE OF LOTS 10 THROUGH 8 BLOCK 3 A DISTANCE OF 218.15 FEET TO THE SW CORNER OF SAID LOT 8, THENCE SOUTH 50 DEGREES 38 MINUTES 04 SECONDS WEST, ALONG THE NORTHWEST LINE OF LOTS 7 THROUGH 2 BLOCK 3 A DISTANCE OF 296.40 FEET TO THE NW CORNER OF SAID LOT 2, THENCE SOUTH 14 DEGREES 49 MINUTES 33 SECONDS EAST, ALONG THE WEST LINE OF LOT 2 BLOCK 3 A DISTANCE OF 64.90 FEET TO THE NE CORNER OF LOT 1 BLK 3, THENCE SOUTH 75 DEGREES 16 MINUTES 30 SECONDS WEST, ALONG THE NORTH LINE OF LOT 1 BLOCK 3 AND THE NORTH ROW LINE OF WEST GREENFIELD STREET A DISTANCE OF 160.14 FEET TO A POINT, THENCE SOUTH 14 DEGREES 42 MINUTES 19 SECONDS EAST, ALONG THE WEST ROW LINE OF SAID WEST GREENFIELD STREET A DISTANCE OF 254.67 FEET TO A POINT OF CURVATURE, THENCE AROUND A CURVE IN A COUNTERCLOCKWISE DIRECTION HAVING A DELTA ANGLE OF 38 DEGREES 32 MINUTES 10 SECONDS, AN ARC DISTANCE OF 164.63 FEET, A RADIUS OF 244.77 FEET, AND A CHORD OF SOUTH 33 DEGREES 58 MINUTES 24 SECONDS EAST, A DISTANCE OF 161.54 FEET TO A POINT, THENCE SOUTH 53 DEGREES 14 MINUTES 29 SECONDS EAST, ALONG THE SOUTHWEST ROW LINE OF SAID WEST GREENFIELD STREET A DISTANCE OF 120.03 FEET TO A POINT, THENCE SOUTH 36 DEGREES 45 MINUTES 34 SECONDS WEST, A DISTANCE OF 213.26 FEET TO A POINT OF CURVATURE, THENCE AROUND A CURVE IN A COUNTERCLOCKWISE DIRECTION HAVING A DELTA ANGLE OF 35 DEGREES 5 MINUTES 49 SECONDS, AN ARC DISTANCE OF 202.14 FEET, A RADIUS OF 330.00 FEET, AND A CHORD OF SOUTH 19 DEGREES 12 MINUTES 40 SECONDS WEST, A DISTANCE OF 199.00 FEET TO A POINT ON THE SOUTHEAST R.O.W. LINE OF N.W. FAIRWAY DRIVE, THENCE NORTH 36 DEGREES 45 MINUTES 34 SECONDS EAST A DISTANCE OF 363.62 FEET TO THE WEST CORNER OF LOT 1 BLOCK 5 HIGHLANDS NORTH 2ND ADDITION, THENCE SOUTH 52 DEGREES 52 MINUTES 07 SECONDS EAST, ALONG THE SOUTHWEST LINE OF SAID LOT 1 BLOCK 5 A DISTANCE OF 120.35 FEET TO THE SE CORNER OF SAID LOT 1 BLK 5, THENCE NORTH 36 DEGREES 56 MINUTES 50 SECONDS EAST, ALONG THE SOUTHEAST LINE OF LOTS 1 THROUGH 12 BLOCK 5 HIGHLANDS NORTH 2ND ADDITION, A DISTANCE OF 901.34 FEET TO THE SE CORNER OF LOT 15 BLK 5, THENCE NORTH 84 DEGREES 13 MINUTES 30 SECONDS EAST, ALONG THE SOUTH LINE OF LOTS 15 THROUGH 24 A DISTANCE OF 770.84 FEET TO SE CORNER OF SAID LOT 24, THENCE AROUND A CURVE IN A COUNTERCLOCKWISE DIRECTION HAVING A DELTA ANGLE OF 23 DEGREES 31 MINUTES 18 SECONDS, AN ARC DISTANCE OF 209.61 FEET, A RADIUS OF 510.58 FEET, AND A CHORD OF NORTH 72 DEGREES 27 MINUTES 51 SECONDS EAST, A DISTANCE OF 208.14 FEET TO A POINT, THENCE NORTH 80 DEGREES 42 MINUTES 12 SECONDS EAST, ALONG THE SOUTHEAST LINE OF LOTS 27 AND 28 BLOCK 5, AND LOTS 22 AND 21 BLOCK 20 HIGHLAND NORTH ADDITION A DISTANCE OF 234.43 FEET TO A POINT OF CURVATURE, THENCE AROUND A CURVE IN A CLOCKWISE DIRECTION HAVING A DELTA ANGLE OF 15 DEGREES 04 MINUTES 59 SECONDS, AN ARC DISTANCE OF 159.97 FEET, A RADIUS OF 607.68 FEET, AND A CHORD OF NORTH 68 DEGREES 14 MINUTES 41 SECONDS EAST, A DISTANCE OF 159.51 FEET TO A POINT, THENCE NORTH 75 DEGREES 47 MINUTES 10 SECONDS EAST, ALONG THE SOUTH LINE OF LOTS 18 THROUGH 12 BLOCK 20 A DISTANCE OF 454.87 FEET TO A POINT OF CURVATURE, THENCE AROUND A CURVE IN A COUNTERCLOCKWISE DIRECTION HAVING A DELTA ANGLE OF 83 DEGREES 04 MINUTES 13 SECONDS, AN ARC DISTANCE OF 455.37 FEET, A RADIUS OF 314.08 FEET, AND A CHORD OF NORTH 34 DEGREES 15 MINUTES 04 SECONDS EAST, A DISTANCE OF 416.52 FEET TO A POINT, THENCE NORTH 7 DEGREES 17 MINUTES 03

SECONDS WEST, ALONG THE EAST LINE OF LOTS 7 THROUGH 1 BLOCK 20 A DISTANCE OF 474.72 FEET TO THE NE CORNER OF SAID LOT 1 BLK 20, THENCE NORTH 82 DEGREES 45 MINUTES 05 SECONDS EAST, ALONG THE NORTH LINE OF OUTLOT C HIGHLANDS EAST ADDITION A DISTANCE OF 19.70 FEET TO A POINT OF CURVATURE, THENCE AROUND A CURVE IN A CLOCKWISE DIRECTION HAVING A DELTA ANGLE OF 68 DEGREES 24 MINUTES 08 SECONDS, AN ARC DISTANCE OF 537.23 FEET, A RADIUS OF 450.00 FEET, AND A CHORD OF SOUTH 63 DEGREES 02 MINUTES 52 SECONDS EAST, A DISTANCE OF 505.89 FEET TO A POINT, THENCE SOUTH 28 DEGREES 50 MINUTES 49 SECONDS EAST, ALONG THE EAST LINE OF OUTLOT D HIGHLANDS EAST ADDITION A DISTANCE OF 1621.42 FEET TO A POINT OF CURVATURE, THENCE AROUND A CURVE IN A CLOCKWISE DIRECTION HAVING A DELTA ANGLE OF 78 DEGREES 21 MINUTES 42 SECONDS, AN ARC DISTANCE OF 619.95 FEET, A RADIUS OF 453.29 FEET, AND A CHORD OF SOUTH 10 DEGREES 20 MINUTES 02 SECONDS WEST, A DISTANCE OF 572.75 FEET TO A POINT, THENCE SOUTH 49 DEGREES 30 MINUTES 53 SECONDS WEST, ALONG THE SOUTHEAST LINE OF SAID OUTLOT D A DISTANCE OF 99.93 FEET TO A POINT, THENCE AROUND A CURVE IN A COUNTERCLOCKWISE DIRECTION HAVING A DELTA ANGLE OF 11 DEGREES 10 MINUTES 07 SECONDS, AN ARC DISTANCE OF 110.63 FEET, A RADIUS OF 567.52 FEET, AND A CHORD OF SOUTH 43 DEGREES 55 MINUTES 49 SECONDS WEST, A DISTANCE OF 110.45 FEET TO THE SOUTH CORNER OF SAID OUTLOT D, THENCE NORTH 54 DEGREES 22 MINUTES 46 SECONDS WEST, ALONG THE WEST LINE OF SAID OUTLOT D A DISTANCE OF 207.19 FEET TO A POINT OF CURVATURE, THENCE AROUND A CURVE IN A COUNTERCLOCKWISE DIRECTION HAVING A DELTA ANGLE OF 07 DEGREES 06 MINUTES 32 SECONDS, AN ARC DISTANCE OF 78.17 FEET, A RADIUS OF 630.00 FEET, AND A CHORD OF NORTH 57 DEGREES 56 MINUTES 02 SECONDS WEST, A DISTANCE OF 78.12 FEET TO A POINT, THENCE NORTH 61 DEGREES 29 MINUTES 19 SECONDS WEST, ALONG THE WEST LINE OF SAID OUTLOT D A DISTANCE OF 24.91 FEET TO A POINT, THENCE NORTH 28 DEGREES 30 MINUTES 41 SECONDS EAST, ALONG THE WEST LINE OF SAID OUTLOT D A DISTANCE OF 78.05 FEET TO A POINT, THENCE NORTH 6 DEGREES 57 MINUTES 49 SECONDS WEST, ALONG THE WEST LINE OF SAID OUTLOT D A DISTANCE OF 162.42 FEET TO A POINT, THENCE NORTH 22 DEGREES 39 MINUTES 09 SECONDS WEST, ALONG THE WEST LINE OF SAID OUTLOT D A DISTANCE OF 96.10 FEET TO A POINT, THENCE NORTH 32 DEGREES 18 MINUTES 42 SECONDS WEST, ALONG THE WEST LINE OF SAID OUTLOT D A DISTANCE OF 505.18 FEET TO A POINT, THENCE NORTH 44 DEGREES 17 MINUTES 42 SECONDS WEST, ALONG THE WEST LINE OF SAID OUTLOT D A DISTANCE OF 87.78 FEET TO A POINT, THENCE NORTH 50 DEGREES 39 MINUTES 05 SECONDS WEST, ALONG THE NORTH LINE OF OUTLOT E A DISTANCE OF 87.50 FEET TO A POINT, THENCE SOUTH 35 DEGREES 10 MINUTES 02 SECONDS WEST, ALONG THE NORTH LINE OF SAID OUTLOT E A DISTANCE OF 120.00 FEET TO A POINT, THENCE AROUND A CURVE IN A COUNTERCLOCKWISE DIRECTION HAVING A DELTA ANGLE OF 03 DEGREES 55 MINUTES 18 SECONDS, AN ARC DISTANCE OF 32.85 FEET, A RADIUS OF 480.00 FEET, AND A CHORD OF NORTH 56 DEGREES 47 MINUTES 37 SECONDS WEST, A DISTANCE OF 32.85 FEET TO A POINT, THENCE NORTH 31 DEGREES 14 MINUTES 44 SECONDS EAST, ALONG THE NORTH LINE OF SAID OUTLOT E A DISTANCE OF 120.00 FEET TO A POINT, THENCE NORTH 62 DEGREES 43 MINUTES 43 SECONDS WEST, ALONG THE NORTH LINE OF SAID OUTLOT E A DISTANCE OF 83.17 FEET TO A POINT, THENCE NORTH 70 DEGREES 40 MINUTES 37 SECONDS WEST, ALONG THE NORTH LINE OF SAID OUTLOT E A DISTANCE OF 83.17 FEET TO A POINT, THENCE NORTH 78 DEGREES 37 MINUTES 31 SECONDS WEST, ALONG THE NORTH LINE OF SAID OUTLOT E A DISTANCE OF 83.17 FEET TO A POINT, THENCE NORTH 86 DEGREES 34 MINUTES 25 SECONDS WEST, ALONG THE NORTH LINE OF SAID OUTLOT E A DISTANCE OF 83.17 FEET TO A POINT, THENCE SOUTH 85 DEGREES 28 MINUTES 41 SECONDS WEST, ALONG THE NORTH LINE OF SAID OUTLOT E A DISTANCE OF 83.17 FEET TO A POINT, THENCE SOUTH 77 DEGREES 40 MINUTES 39 SECONDS WEST, ALONG THE NORTH LINE OF SAID OUTLOT E A DISTANCE OF 80.49 FEET TO A POINT, THENCE SOUTH 69 DEGREES 13 MINUTES 36 SECONDS WEST, ALONG THE NORTH LINE OF SAID OUTLOT E A DISTANCE OF 91.01 FEET TO A POINT, THENCE SOUTH 55 DEGREES 25 MINUTES 23 SECONDS WEST, ALONG THE NORTH LINE OF SAID OUTLOT E A DISTANCE OF 93.33 FEET TO A POINT, THENCE SOUTH 41 DEGREES 18 MINUTES 53 SECONDS WEST, ALONG THE NORTH LINE OF SAID OUTLOT E A DISTANCE OF 93.33 FEET TO A POINT, THENCE SOUTH 27 DEGREES 12 MINUTES 23 SECONDS WEST, ALONG THE NORTH LINE OF SAID OUTLOT E A DISTANCE OF 93.33 FEET TO A POINT, THENCE SOUTH 13 DEGREES 05 MINUTES 53 SECONDS WEST, ALONG THE NORTH LINE OF SAID OUTLOT E A DISTANCE OF 93.33 FEET TO A POINT, THENCE SOUTH 83 DEGREES 57 MINUTES 21 SECONDS EAST, ALONG THE NORTH LINE OF SAID OUTLOT E A DISTANCE OF 120.00 FEET TO A POINT, THENCE AROUND A CURVE IN A COUNTERCLOCKWISE DIRECTION HAVING A DELTA ANGLE OF 04 DEGREES 24 MINUTES 30 SECONDS, AN ARC DISTANCE OF 20.00 FEET, A RADIUS OF 260.00 FEET, AND A CHORD OF SOUTH 3 DEGREES 50 MINUTES 23 SECONDS WEST, A DISTANCE OF 20.00 FEET TO A POINT, THENCE NORTH 88 DEGREES 21 MINUTES 52 SECONDS WEST, ALONG THE NORTH LINE OF SAID OUTLOT E A DISTANCE OF 120.00 FEET TO A POINT, THENCE SOUTH 5 DEGREES 25 MINUTES 07 SECONDS EAST, ALONG THE NORTH LINE OF SAID OUTLOT E A DISTANCE OF 93.33 FEET TO A POINT, THENCE SOUTH 41 DEGREES 43 MINUTES 51 SECONDS WEST, ALONG THE NORTH LINE OF SAID OUTLOT E A DISTANCE OF 72.02 FEET TO A POINT, THENCE NORTH 43 DEGREES 37 MINUTES 08 SECONDS WEST, ALONG THE NORTH LINE OF SAID OUTLOT E A DISTANCE OF 68.70 FEET TO A POINT, THENCE NORTH 48 DEGREES 52 MINUTES 09 SECONDS WEST, ALONG THE NORTH LINE OF SAID OUTLOT E A DISTANCE OF 68.70 FEET TO A POINT, THENCE NORTH 54 DEGREES 07 MINUTES 10 SECONDS WEST, ALONG THE NORTH LINE OF OUTLOT E A DISTANCE OF 68.70 FEET TO A POINT, THENCE SOUTH 33 DEGREES 15 MINUTES 19 SECONDS WEST, ALONG THE NORTH LINE OF SAID OUTLOT E A DISTANCE OF 120.00 FEET TO A POINT, THENCE AROUND A CURVE IN A COUNTERCLOCKWISE DIRECTION HAVING A DELTA ANGLE OF 02 DEGREES 31 MINUTES 32 SECONDS, AN ARC DISTANCE OF 27.77 FEET, A RADIUS OF 630.00 FEET, AND A CHORD OF NORTH 58 DEGREES 00 MINUTES 27 SECONDS WEST, A DISTANCE OF 27.77 FEET TO A POINT, THENCE NORTH 30 DEGREES 43 MINUTES 47 SECONDS EAST, ALONG THE NORTH LINE OF SAID OUTLOT E A DISTANCE OF 120.00 FEET TO A POINT, THENCE NORTH 62 DEGREES 06 MINUTES 51 SECONDS WEST, ALONG THE NORTH LINE OF SAID OUTLOT E A DISTANCE OF 74.43 FEET TO A POINT, THENCE NORTH 67 DEGREES 48 MINUTES 48 SECONDS WEST, ALONG THE NORTH LINE OF SAID OUTLOT E A DISTANCE OF 75.66 FEET TO A POINT, THENCE NORTH 71 DEGREES 23 MINUTES 14 SECONDS WEST, ALONG THE NORTH LINE OF SAID OUTLOT E A DISTANCE OF 135.38 FEET TO A POINT, THENCE NORTH 79 DEGREES 45 MINUTES 19 SECONDS WEST, ALONG THE NORTH LINE OF SAID OUTLOT E A DISTANCE OF 87.32 FEET TO A POINT, THENCE SOUTH 82 DEGREES 45 MINUTES 16 SECONDS WEST, ALONG THE NORTH LINE OF SAID OUTLOT E A DISTANCE OF 95.12 FEET TO A POINT, THENCE SOUTH 64 DEGREES 30 MINUTES 38 SECONDS WEST, ALONG THE NORTH LINE OF SAID OUTLOT E A DISTANCE OF 95.12 FEET TO A POINT, THENCE SOUTH 46 DEGREES 16 MINUTES 00 SECONDS WEST, ALONG THE NORTH LINE OF SAID OUTLOT E A DISTANCE OF 95.12 FEET TO A POINT, THENCE SOUTH 29 DEGREES 43 MINUTES 54 SECONDS WEST, ALONG THE NORTH LINE OF SAID OUTLOT E A DISTANCE OF 84.13 FEET TO A POINT, THENCE SOUTH 26 DEGREES 03 MINUTES 11 SECONDS WEST, ALONG THE NORTH LINE OF SAID OUTLOT E A DISTANCE OF 90.00 FEET TO A POINT, THENCE AROUND A CURVE IN A COUNTERCLOCKWISE DIRECTION HAVING A DELTA ANGLE OF 05 DEGREES 04 MINUTES 55 SECONDS, AN ARC DISTANCE OF 29.27 FEET, A RADIUS OF 330.00 FEET, AND A CHORD OF NORTH 66 DEGREES 57 MINUTES 34 SECONDS WEST, A DISTANCE OF 29.26 FEET TO A POINT, THENCE NORTH 20 DEGREES 29 MINUTES 58 SECONDS EAST, ALONG THE NORTH LINE OF SAID OUTLOT E A

DISTANCE OF 120.00 FEET TO A POINT, THENCE NORTH 74 DEGREES 35 MINUTES 28 SECONDS WEST, ALONG THE NORTH LINE OF SAID OUTLOT E A DISTANCE OF 79.86 FEET TO A POINT, THENCE NORTH 84 DEGREES 46 MINUTES 21 SECONDS WEST, ALONG THE NORTH LINE OF SAID OUTLOT E A DISTANCE OF 79.86 FEET TO A POINT, THENCE SOUTH 85 DEGREES 02 MINUTES 46 SECONDS WEST, ALONG THE NORTH LINE OF SAID OUTLOT E A DISTANCE OF 79.86 FEET TO A POINT, THENCE SOUTH 74 DEGREES 51 MINUTES 53 SECONDS WEST, ALONG THE NORTH LINE OF SAID OUTLOT E A DISTANCE OF 79.86 FEET TO A POINT, THENCE SOUTH 65 DEGREES 24 MINUTES 21 SECONDS WEST, ALONG THE NORTH LINE OF SAID OUTLOT E A DISTANCE OF 74.32 FEET TO A POINT, THENCE SOUTH 62 DEGREES 56 MINUTES 28 SECONDS WEST, ALONG THE NORTH LINE OF SAID OUTLOT E A DISTANCE OF 126.00 FEET TO A POINT, THENCE SOUTH 62 DEGREES 23 MINUTES 33 SECONDS WEST, ALONG THE NORTH LINE OF SAID OUTLOT E A DISTANCE OF 67.41 FEET TO A POINT, THENCE SOUTH 56 DEGREES 38 MINUTES 35 SECONDS WEST, ALONG THE NORTH LINE OF SAID OUTLOT E A DISTANCE OF 76.19 FEET TO A POINT, THENCE SOUTH 49 DEGREES 18 MINUTES 47 SECONDS WEST, ALONG THE NORTH LINE OF SAID OUTLOT E A DISTANCE OF 77.23 FEET TO A POINT, THENCE SOUTH 41 DEGREES 55 MINUTES 59 SECONDS WEST, ALONG THE NORTH LINE OF SAID OUTLOT E A DISTANCE OF 77.23 FEET TO A POINT, THENCE SOUTH 34 DEGREES 33 MINUTES 12 SECONDS WEST, ALONG THE NORTH LINE OF SAID OUTLOT E A DISTANCE OF 77.23 FEET TO A POINT, THENCE SOUTH 59 DEGREES 08 MINUTES 11 SECONDS EAST, ALONG THE NORTH LINE OF SAID OUTLOT E A DISTANCE OF 119.99 FEET TO A POINT, THENCE SOUTH 30 DEGREES 34 MINUTES 53 SECONDS WEST, ALONG THE NORTH LINE OF SAID OUTLOT E A DISTANCE OF 19.88 FEET TO A POINT, THENCE NORTH 59 DEGREES 25 MINUTES 07 SECONDS WEST, ALONG THE NORTH LINE OF SAID OUTLOT E A DISTANCE OF 120.00 FEET TO A POINT, THENCE SOUTH 30 DEGREES 34 MINUTES 53 SECONDS WEST, ALONG THE NORTHWEST LINE OF SAID OUTLOT E A DISTANCE OF 631.34 FEET TO A POINT, THENCE AROUND A CURVE IN A COUNTERCLOCKWISE DIRECTION HAVING A DELTA ANGLE OF 05 DEGREES 04 MINUTES 56 SECONDS, AN ARC DISTANCE OF 49.13 FEET, A RADIUS OF 553.90 FEET, AND A CHORD OF NORTH 87 DEGREES 32 MINUTES 57 SECONDS WEST, A DISTANCE OF 49.11 FEET TO A POINT, THENCE SOUTH 89 DEGREES 54 MINUTES 36 SECONDS WEST ALONG THE NORTH R.O.W. LINE OF WEST KATLEMEN DRIVE A DISTANCE OF 272.14 FEET TO A POINT, THENCE SOUTH 0 DEGREES 15 MINUTES 00 SECONDS EAST, A DISTANCE OF 80.00 FEET TO A POINT ON THE SOUTH ROW LINE OF W. KATLEMEN DRIVE, THENCE NORTH 89 DEGREES 54 MINUTES 36 SECONDS EAST ALONG THE SOUTH R.O.W. LINE OF WEST KATLEMEN DRIVE A DISTANCE OF 272.62 FEET TO A POINT, THENCE AROUND A CURVE IN A CLOCKWISE DIRECTION HAVING A DELTA ANGLE OF 31 DEGREES 09 MINUTES 44 SECONDS, AN ARC DISTANCE OF 257.74 FEET, A RADIUS OF 473.90 FEET, AND A CHORD OF SOUTH 74 DEGREES 30 MINUTES 32 SECONDS EAST, A DISTANCE OF 254.58 FEET TO A POINT, THENCE SOUTH 58 DEGREES 55 MINUTES 40 SECONDS EAST, ALONG THE SOUTH ROW LINE OF W. KATLEMEN DRIVE A DISTANCE OF 459.73 FEET TO THE NW CORNER OF LOT 31 BLK 12 HIGHLAND NORTH 3RD ADDITION, THENCE SOUTH 31 DEGREES 47 MINUTES 00 SECONDS WEST, ALONG THE WEST LINE OF LOT 31 BLOCK 12 HIGHLAND NORTH 3RD ADDITION A DISTANCE OF 79.89 FEET TO A POINT, THENCE SOUTH 20 DEGREES 58 MINUTES 32 SECONDS WEST, ALONG THE WEST LINE OF LOTS 31, & 18 THROUGH 16 SAID BLOCK 12 A DISTANCE OF 324.98 FEET TO A POINT, THENCE SOUTH 26 DEGREES 13 MINUTES 59 SECONDS EAST, ALONG THE WEST LINE OF LOTS 16 AND 15 OF SAID BLOCK 12 A DISTANCE OF 95.50 FEET TO NW CORNER OF LOT 11 BLK 12, THENCE SOUTH 29 DEGREES 08 MINUTES 51 SECONDS WEST, ALONG THE WEST LINE OF LOTS 11 AND 10 OF SAID BLOCK 12 A DISTANCE OF 144.45 FEET TO THE WEST CORNER OF SAID LOT 10, THENCE SOUTH 12 DEGREES 27 MINUTES 49 SECONDS WEST, ALONG THE WEST LINE LOTS 9 AND 8 SAID BLOCK 12 A DISTANCE OF 132.52 FEET TO A POINT, THENCE SOUTH 0 DEGREES 05 MINUTES 30 SECONDS EAST, ALONG THE WEST LINE OF LOTS 8 THROUGH 1 OF SAID BLOCK 12 A DISTANCE OF 533.70 FEET TO THE SW CORNER OF SAID LOT 1 BLK 12, THENCE NORTH 84 DEGREES 31 MINUTES 10 SECONDS WEST, ALONG THE NORTH ROW LINE OF WEST JENNIFER DRIVE A DISTANCE OF 20.69 FEET TO A POINT, THENCE SOUTH 5 DEGREES 30 MINUTES 02 SECONDS WEST, ALONG THE WEST ROW LINE OF SAID WEST JENNIFER DRIVE A DISTANCE OF 60.00 FEET TO A POINT, THENCE AROUND A CURVE IN A CLOCKWISE DIRECTION HAVING A DELTA ANGLE OF 01 DEGREES 19 MINUTES 34 SECONDS, AN ARC DISTANCE OF 4.67 FEET, A RADIUS OF 201.76 FEET, AND A CHORD OF NORTH 83 DEGREES 46 MINUTES 38 SECONDS WEST, A DISTANCE OF 4.67 FEET TO THE NW CORNER OF LOT 17 BLK 9 HIGHLAND NORTH 3RD ADDITION, THENCE SOUTH 6 DEGREES 56 MINUTES 56 SECONDS WEST, ALONG THE WEST LINE OF SAID LOT 17 BLOCK 9 A DISTANCE OF 119.25 FEET TO THE SW CORNER OF SAID LOT 17 BLK 9, THENCE SOUTH 13 DEGREES 57 MINUTES 36 SECONDS WEST ALONG THE WEST R.O.W. LINE OF HIGHLANDS BLVD. A DISTANCE OF 100.00 FEET TO A POINT, THENCE AROUND A CURVE IN A COUNTERCLOCKWISE DIRECTION HAVING A DELTA ANGLE OF 08 DEGREES 05 MINUTES 19 SECONDS, AN ARC DISTANCE OF 194.17 FEET, A RADIUS OF 1375.40 FEET, AND A CHORD OF SOUTH 80 DEGREES 05 MINUTES 03 SECONDS EAST, A DISTANCE OF 194.01 FEET TO A POINT OF CURVATURE, THENCE AROUND A CURVE IN A COUNTERCLOCKWISE DIRECTION HAVING A DELTA ANGLE OF 43 DEGREES 24 MINUTES 32 SECONDS, AN ARC DISTANCE OF 1912.18 FEET, A RADIUS OF 2523.90 FEET, AND A CHORD OF NORTH 74 DEGREES 10 MINUTES 01 SECONDS EAST, A DISTANCE OF 1866.78 FEET TO A POINT, THENCE NORTH 52 DEGREES 27 MINUTES 45 SECONDS EAST, ALONG THE SOUTH ROW LINE OF HIGHLAND BLVD. A DISTANCE OF 494.38 FEET TO A POINT, THENCE NORTH 56 DEGREES 40 MINUTES 53 SECONDS EAST, ALONG THE SOUTH ROW LINE OF SAID HIGHLAND BLVD. A DISTANCE OF 244.69 FEET TO A POINT, THENCE AROUND A CURVE IN A CLOCKWISE DIRECTION HAVING A DELTA ANGLE OF 22 DEGREES 03 MINUTES 34 SECONDS, AN ARC DISTANCE OF 531.01 FEET, A RADIUS OF 1379.21 FEET, AND A CHORD OF NORTH 68 DEGREES 50 MINUTES 20 SECONDS EAST, A DISTANCE OF 527.74 FEET TO A POINT OF CURVATURE, THENCE AROUND A CURVE IN A CLOCKWISE DIRECTION HAVING A DELTA ANGLE OF 91 DEGREES 44 MINUTES 31 SECONDS, AN ARC DISTANCE OF 60.85 FEET, A RADIUS OF 38.00 FEET, AND A CHORD OF SOUTH 54 DEGREES 15 MINUTES 38 SECONDS EAST, A DISTANCE OF 54.55 FEET TO A POINT, THENCE SOUTH 8 DEGREES 23 MINUTES 22 SECONDS EAST, ALONG THE WEST ROW LINE OF NORTHWEST 1ST STREET A DISTANCE OF 392.98 FEET TO A POINT OF CURVATURE, THENCE AROUND A CURVE IN A COUNTERCLOCKWISE DIRECTION HAVING A DELTA ANGLE OF 44 DEGREES 20 MINUTES 14 SECONDS, AN ARC DISTANCE OF 541.22 FEET, A RADIUS OF 699.40 FEET, AND A CHORD OF SOUTH 30 DEGREES 33 MINUTES 29 SECONDS EAST, A DISTANCE OF 527.81 FEET TO A POINT, THENCE SOUTH 37 DEGREES 01 MINUTES 32 SECONDS WEST, A DISTANCE OF 352.77 FEET TO A POINT ON THE NORTH LINE OF LOT 46 I.T., THENCE NORTH 89 DEGREES 36 MINUTES 17 SECONDS EAST, ALONG THE NORTH LINE OF SAID LOT 46 I.T. A DISTANCE OF 220.23 FEET TO THE NE CORNER OF SAID LOT 46 I.T., THENCE SOUTH 28 DEGREES 21 MINUTES 31 SECONDS WEST, ALONG THE EAST LINE OF SAID LOT 46 I.T. A DISTANCE OF 164.82 FEET TO A POINT, THENCE SOUTH 37 DEGREES 01 MINUTES 41 SECONDS WEST, ALONG THE EAST LINE OF SAID LOT 46 I.T. A DISTANCE OF 508.79 FEET TO THE SE CORNER OF SAID LOT 46 I.T., THENCE SOUTH 89 DEGREES 54 MINUTES 39 SECONDS WEST, ALONG THE SOUTH LINE OF SAID LOT 46 I.T. A DISTANCE OF 4168.87 FEET TO THE SW CORNER OF SAID LOT 46 I.T., THENCE SOUTH 0 DEGREES 06 MINUTES 46 SECONDS EAST, ALONG THE EAST LINE OF LOT 56 I.T. A DISTANCE OF 1658.13 FEET TO THE SE CORNER OF SAID LOT 56 I.T., THENCE SOUTH 89 DEGREES 54 MINUTES 36 SECONDS WEST, ALONG THE SOUTH LINE OF LOT 56 I.T. & LOT 48 I.T. A DISTANCE OF 1260.24 FEET TO A POINT, THENCE SOUTH 0 DEGREES 07 MINUTES 42 SECONDS EAST, ALONG THE SOUTHEAST LINE OF SAID LOT 48 I.T. A DISTANCE

HIGHLANDS COALITION FINAL PLAT

OF 196.67 FEET TO A POINT, THENCE SOUTH 89 DEGREES 52 MINUTES 18 SECONDS WEST, ALONG THE SOUTH LINE OF SAID LOT 48 I.T. A DISTANCE OF 103.18 FEET TO THE SW CORNER OF SAID LOT 48 I.T., THENCE NORTH 0 DEGREES 06 MINUTES 13 SECONDS WEST, ALONG THE WEST LINE OF SAID LOT 48 I.T. A DISTANCE OF 1057.07 FEET TO A POINT, THENCE NORTH 89 DEGREES 53 MINUTES 47 SECONDS EAST ALONG THE WEST LINE OF SAID LOT 48 I.T. A DISTANCE OF 25.00 FEET TO A POINT, THENCE NORTH 0 DEGREES 06 MINUTES 13 SECONDS WEST, ALONG THE WEST LINE OF SAID LOT 48 I.T. A DISTANCE OF 1222.27 FEET TO A POINT OF SPIRAL CURVATURE, THENCE NORTH 0 DEGREES 15 MINUTES 24 SECONDS WEST ALONG THE CHORD BEARING OF THE SPIRAL CURVE A DISTANCE OF 102.07 FEET TO A POINT, THENCE NORTH 89 DEGREES 59 MINUTES 24 SECONDS WEST, A DISTANCE OF 25.25 FEET TO A POINT, THENCE NORTH 1 DEGREE 09 MINUTES 09 SECONDS WEST, ALONG THE CHORD BEARING OF THE SPIRAL CURVE A DISTANCE OF 116.13 FEET TO A POINT OF CURVATURE, THENCE AROUND A CURVE IN A COUNTERCLOCKWISE DIRECTION HAVING A DELTA ANGLE OF 46 DEGREES 25 MINUTES 28 SECONDS, AN ARC DISTANCE OF 2402.36 FEET, A RADIUS OF 2964.93 FEET, AND A CHORD OF NORTH 25 DEGREES 24 MINUTES 57 SECONDS WEST, A DISTANCE OF 2337.18 FEET TO A POINT OF SPIRAL CURVATURE, THENCE NORTH 50 DEGREES 01 MINUTES 41 SECONDS WEST, ALONG THE CHORD BEARING OF THE SPIRAL CURVE A DISTANCE OF 217.33 FEET TO A POINT, THENCE NORTH 50 DEGREES 43 MINUTES 41 SECONDS WEST, ALONG THE SOUTHWEST LINE OF LOT 23 I.T. A DISTANCE OF 314.97 FEET TO A POINT, NORTH 05 DEGREES 01 MINUTES 10 SECONDS WEST, A DISTANCE OF 834.70 FEET TO A POINT, THENCE NORTH 49 DEGREES 28 MINUTES 50 SECONDS EAST A DISTANCE OF 320.00 FEET TO A POINT, THENCE NORTH 36 DEGREES 01 MINUTES 10 SECONDS WEST A DISTANCE OF 467.75 TO A POINT, THENCE NORTH 00 DEGREES 32 MINUTES 53 SECONDS EAST ALONG A LINE 33.00 FEET EAST OF AND PARALLEL TO THE WEST LINE OF THE NE 1/4 OF SECTION 4 A DISTANCE OF 1155.54 FEET TO A POINT, THENCE NORTH 89 DEGREES 59 MINUTES 23 SECONDS EAST ALONG A LINE 50.00 FEET SOUTH OF AND PARALLEL TO THE NORTH LINE OF SAID SECTION 4 A DISTANCE OF 1290.38 FEET TO A POINT, THENCE NORTH 0 DEGREES 00 MINUTES 37 SECONDS WEST A DISTANCE OF 100.00 FEET TO A POINT, THENCE NORTH 0 DEGREES 20 MINUTES 03 SECONDS EAST, ALONG THE WEST LINE OF LOTS 20 I.T. AND 6 I.T. A DISTANCE OF 2235.70 FEET TO THE NW CORNER OF LOT 6 I.T., THENCE AROUND A CURVE IN A CLOCKWISE DIRECTION HAVING A DELTA ANGLE OF 07 DEGREES 50 MINUTES 10 SECONDS, AN ARC DISTANCE OF 1543.27 FEET, A RADIUS OF 11284.16 FEET, AND A CHORD OF SOUTH 71 DEGREES 54 MINUTES 10 SECONDS EAST, A DISTANCE OF 1542.06 FEET TO A POINT, THENCE SOUTH 68 DEGREES 44 MINUTES 46 SECONDS EAST, ALONG THE NORTH LINE OF SAID LOT 6 I.T. A DISTANCE OF 358.89 FEET TO THE POINT OF BEGINNING. SAID TRACT CONTAINS A CALCULATED AREA OF 665.73 ACRES MORE OR LESS.

SHEET 9 OF 10

4/9/1993 8:01 A.M. FILE: G:\45592\LFPHCS9 SF = 20

DEDICATION

COMMENCING FROM THE SW CORNER OF LOT 5 HIGHLAND OFFICE PARK, SAID POINT ALSO BEING THE TRUE POINT OF BEGINNING, THENCE NORTH 61 DEGREES 09 MINUTES 11 SECONDS EAST, ALONG THE SOUTH LINE OF SAID LOT 5 A DISTANCE OF 539.91 FEET TO A POINT, THENCE NORTH 61 DEGREES 17 MINUTES 00 SECONDS EAST, ALONG THE SOUTH LINE OF LOT 4 OF SAID HIGHLAND OFFICE PARK A DISTANCE OF 487.80 FEET TO THE SE CORNER OF SAID LOT 4, THENCE SOUTH 17 DEGREES 25 MINUTES 02 SECONDS EAST, ALONG THE EAST LINE OF LOT 44 I.T. A DISTANCE OF 256.78 FEET TO A POINT, THENCE SOUTH 13 DEGREES 14 MINUTES 01 SECONDS EAST, ALONG THE EAST LINE OF SAID LOT 44 I.T. A DISTANCE OF 478.54 FEET TO A POINT, THENCE AROUND A CURVE IN A CLOCKWISE DIRECTION HAVING A DELTA ANGLE OF 15 DEGREES 40 MINUTES 17 SECONDS, AN ARC DISTANCE OF 154.87 FEET, A RADIUS OF 566.20 FEET, AND A CHORD OF SOUTH 8 DEGREES 49 MINUTES 02 SECONDS EAST, A DISTANCE OF 154.38 FEET TO A POINT, THENCE AROUND A CURVE IN A CLOCKWISE DIRECTION HAVING A DELTA ANGLE OF 27 DEGREES 30 MINUTES 02 SECONDS, AN ARC DISTANCE OF 157.19 FEET, A RADIUS OF 327.50 FEET, AND A CHORD OF SOUTH 13 DEGREES 41 MINUTES 38 SECONDS WEST, A DISTANCE OF 155.69 FEET TO A POINT, THENCE SOUTH 27 DEGREES 26 MINUTES 38 SECONDS WEST, ALONG THE EAST LINE OF LOT 30 I.T. A DISTANCE OF 352.75 FEET TO A POINT, THENCE SOUTH 16 DEGREES 35 MINUTES 38 SECONDS WEST, ALONG THE EAST LINE OF SAID LOT 30 I.T. A DISTANCE OF 399.80 FEET TO A POINT, THENCE SOUTH 7 DEGREES 34 MINUTES 40 SECONDS EAST, ALONG THE EAST LINE OF SAID LOT 30 I.T. A DISTANCE OF 606.17 FEET TO A POINT, THENCE SOUTH 34 DEGREES 47 MINUTES 06 SECONDS WEST, ALONG THE SOUTHWEST LINE OF SAID LOT 30 I.T. A DISTANCE OF 402.28 FEET TO A POINT, THENCE NORTH 52 DEGREES 54 MINUTES 25 SECONDS WEST, ALONG THE SOUTHWEST LINE OF SAID LOT 30 I.T. A DISTANCE OF 205.04 FEET TO A POINT, THENCE SOUTH 0 DEGREES 01 MINUTES 35 SECONDS EAST, A DISTANCE OF 49.58 FEET TO A POINT, THENCE SOUTH 37 DEGREES 01 MINUTES 32 SECONDS WEST, ALONG THE NORTHWEST ROW LINE OF INTERSTATE 80 A DISTANCE OF 687.56 FEET TO A POINT, THENCE AROUND A CURVE IN A CLOCKWISE DIRECTION HAVING A DELTA ANGLE OF 44 DEGREES 17 MINUTES 35 SECONDS, AN ARC DISTANCE OF 452.54 FEET, A RADIUS OF 585.39 FEET, AND A CHORD OF NORTH 30 DEGREES 32 MINUTES 10 SECONDS WEST, A DISTANCE OF 441.36 FEET TO A POINT, THENCE NORTH 8 DEGREES 23 MINUTES 22 SECONDS WEST, ALONG THE EAST ROW LINE OF NW 1ST STREET A DISTANCE OF 463.41 FEET TO A POINT, THENCE NORTH 81 DEGREES 36 MINUTES 38 SECONDS EAST, ALONG THE EAST LINE OF SAID NW 1ST STREET A DISTANCE OF 50.00 FEET TO A POINT, THENCE NORTH 8 DEGREES 23 MINUTES 22 SECONDS WEST, ALONG THE EAST LINE OF SAID NW 1ST STREET A DISTANCE OF 80.00 FEET TO A POINT, THENCE SOUTH 81 DEGREES 36 MINUTES 38 SECONDS WEST, ALONG THE EAST LINE OF SAID NW 1ST STREET A DISTANCE OF 50.00 FEET TO A POINT, THENCE NORTH 8 DEGREES 23 MINUTES 22 SECONDS WEST, ALONG THE EAST LINE OF SAID NW 1ST STREET A DISTANCE OF 410.37 FEET TO A POINT, THENCE AROUND A CURVE IN A CLOCKWISE DIRECTION HAVING A DELTA ANGLE OF 57 DEGREES 53 MINUTES 56 SECONDS, AN ARC DISTANCE OF 472.47 FEET, A RADIUS OF 467.55 FEET, AND A CHORD OF NORTH 20 DEGREES 33 MINUTES 36 SECONDS EAST, A DISTANCE OF 452.62 FEET TO A POINT, THENCE NORTH 49 DEGREES 30 MINUTES 53 SECONDS EAST, ALONG THE EAST LINE OF SAID NW 1ST STREET A DISTANCE OF 99.93 FEET TO A POINT, THENCE AROUND A CURVE IN A COUNTERCLOCKWISE DIRECTION HAVING A DELTA ANGLE OF 53 DEGREES 15 MINUTES 24 SECONDS, AN ARC DISTANCE OF 514.26 FEET, A RADIUS OF 553.26 FEET, AND A CHORD OF NORTH 22 DEGREES 54 MINUTES 01 SECONDS EAST, A DISTANCE OF 495.94 FEET TO THE INTERSECTION OF THE SOUTH R.O.W. LINE OF CHADDERTON CIRCLE AND THE EAST R.O.W. LINE OF NORTHWEST 1ST. STREET, THENCE NORTH 82 DEGREES 40 MINUTES 22 SECONDS EAST ALONG THE SOUTH R.O.W. LINE OF CHADDERTON CIRCLE A DISTANCE OF 118.75 FEET TO A POINT OF CURVATURE, THENCE AROUND A CURVE IN A CLOCKWISE DIRECTION HAVING A DELTA ANGLE OF 21 DEGREES 37 MINUTES 20 SECONDS, AN ARC DISTANCE OF 62.67 FEET, A RADIUS OF 166.06 FEET, AND A CHORD OF SOUTH 86 DEGREES 30 MINUTES 58 SECONDS EAST A DISTANCE OF 62.30 FEET TO A POINT, THENCE SOUTH 75 DEGREES 42 MINUTES 18 SECONDS EAST ALONG THE SOUTH R.O.W. LINE OF CHADDERTON CIRCLE A DISTANCE OF 128.07 FEET TO A POINT OF CURVATURE, THENCE AROUND A CURVE IN A COUNTERCLOCKWISE DIRECTION HAVING A DELTA ANGLE OF 14 DEGREES 19 MINUTES 26 SECONDS, AN ARC DISTANCE OF 45.00 FEET, A RADIUS OF 180.00 FEET, AND A CHORD OF SOUTH 82 DEGREES 52 MINUTES 02 SECONDS EAST, A DISTANCE OF 44.88 FEET TO A POINT, THENCE NORTH 0 DEGREES 01 MINUTES 45 SECONDS WEST ALONG THE EAST R.O.W. LINE OF SAID CHADDERTON CIRCLE A DISTANCE OF 43.00 FEET TO THE WEST 1/4 CORNER OF SAID SECTION 2, THENCE NORTH 0 DEGREES 01 MINUTES 47 SECONDS WEST ALONG THE WEST R.O.W. LINE OF SAID CHADDERTON CIRCLE A DISTANCE OF 17.26 FEET TO A POINT, THENCE AROUND A CURVE IN A CLOCKWISE DIRECTION HAVING A DELTA ANGLE OF 26 DEGREES 29 MINUTES 05 SECONDS, AN ARC DISTANCE OF 55.47 FEET, A RADIUS OF 120.00 FEET, AND A CHORD OF NORTH 75 DEGREES 52 MINUTES 20 SECONDS WEST A DISTANCE OF 54.98 FEET TO A POINT, THENCE NORTH 62 DEGREES 37 MINUTES 48 SECONDS WEST ALONG THE NORTH R.O.W. LINE OF SAID CHADDERTON CIRCLE A DISTANCE OF 46.46 FEET TO A POINT OF CURVATURE, THENCE AROUND A CURVE IN A COUNTERCLOCKWISE DIRECTION HAVING A DELTA ANGLE OF 34 DEGREES 41 MINUTES 51 SECONDS, AN ARC DISTANCE OF 149.01 FEET, A RADIUS OF 246.06 FEET, AND A CHORD OF NORTH 79 DEGREES 58 MINUTES 43 SECONDS WEST A DISTANCE OF 146.74 FEET TO A POINT, THENCE SOUTH 82 DEGREES 40 MINUTES 22 SECONDS WEST ALONG THE NORTH R.O.W. LINE OF CHADDERTON CIRCLE A DISTANCE OF 121.45 FEET TO THE INTERSECTION OF THE NORTH R.O.W. LINE OF SAID CHADDERTON CIRCLE AND THE EAST R.O.W. LINE OF NORTHWEST 1ST. STREET, THENCE AROUND A CURVE IN A COUNTERCLOCKWISE DIRECTION HAVING A DELTA ANGLE OF 16 DEGREES 49 MINUTES 35 SECONDS, AN ARC DISTANCE OF 162.48 FEET, A RADIUS OF 553.26 FEET, AND A CHORD OF NORTH 20 DEGREES 26 MINUTES 02 SECONDS WEST A DISTANCE OF 161.90 FEET TO A POINT, THENCE NORTH 28 DEGREES 50 MINUTES 49 SECONDS WEST ALONG THE EAST R.O.W. LINE OF NORTHWEST 1ST. STREET A DISTANCE OF 139.17 FEET TO THE POINT OF BEGINNING. SAID TRACT CONTAINS A CALCULATED AREA OF 59.20 ACRES MORE OR LESS.

PERMANENT MONUMENTS HAVE BEEN FOUND OR SET AT ALL BOUNDARY CORNERS, STREET INTERSECTIONS, BLOCK CORNERS, POINTS OF TANGENCY AND CURVATURE AS SHOWN ON THE PLAT IN ACCORDANCE WITH TITLE 26 OF THE LINCOLN MUNICIPAL CODE. TEMPORARY MARKERS HAVE BEEN PLACED AT ALL LOT CORNERS AND THE OWNER WILL FURNISH TO THE CITY OF LINCOLN A STAKING BOND TO INSURE THE PLACING OF PERMANENT MONUMENTS AT ALL SUCH LOT CORNERS PRIOR TO THE CONSTRUCTION ON OR CONVEYANCE OF ANY LOT SHOWN ON THIS FINAL PLAT. ALL DIMENSIONS ARE CHORD MEASUREMENTS UNLESS OTHERWISE SHOWN, AND ARE IN FEET AND DECIMALS OF A FOOT.

THE FOREGOING PLAT, IS KNOWN AS HIGHLANDS COALITION, A SUBDIVISION COMPOSED OF THE FOLLOWING LOT 48 I.T. OF SECTION 9, TOWNSHIP 10 NORTH, RANGE 6 EAST, LOT 46 I.T., AND LOT 56 I.T. OF SECTION 10, TOWNSHIP 10 NORTH, RANGE 6 EAST, LOT 44 I.T. AND LOT 30 I.T. OF SECTION 2, TOWNSHIP 10 NORTH, RANGE 6 EAST, LOT 17 I.T., LOT 19 I.T., LOTS 1 THROUGH 6 & OUTLOT "A" HIGHLAND WOODS ADDITION, A PORTION OF THE EAST 1/2 OF SECTION 3, A PORTION OF THE SE 1/4 OF SECTION 3, A PORTION OF THE WEST 1/2 OF SECTION 3, OF SECTION 3, TOWNSHIP 10 NORTH, RANGE 6 EAST, LOT 23 I.T., LOT 24 I.T., LOT 32 I.T., A PORTION OF LOT 30 I.T., AND A PORTION LOT 31 I.T. OF SECTION 4, TOWNSHIP 10 NORTH, RANGE 6 EAST, LOT 20 I.T., LOT 6 I.T., AND A PORTION OF THE SE 1/4 OF SECTION 33, TOWNSHIP 11 NORTH, RANGE 6 EAST, AND A PORTION OF THE SW 1/4 OF SECTION 34, TOWNSHIP 11 NORTH, RANGE 6 EAST OF THE 6TH. P.M., CITY OF LINCOLN, LANCASTER COUNTY, NEBRASKA, AND IS MORE PARTICULARLY DESCRIBED IN THE SURVEYOR'S CERTIFICATE. THIS DEDICATION IS MADE WITH THE FREE CONSENT AND IN ACCORDANCE WITH THE DESIRES OF THE UNDERSIGNED, SOLE OWNER(S), AND THE EASEMENTS SHOWN THEREON ARE HEREBY GRANTED IN PERPETUITY TO THE CITY OF LINCOLN, NEBRASKA, A MUNICIPAL CORPORATION, THE LINCOLN TELEPHONE AND TELEGRAPH COMPANY, TV TRANSMISSION, INC., MINNEGASCO, THEIR SUCCESSORS AND ASSIGNS, TO ALLOW ENTRY FOR THE PURPOSE OF CONSTRUCTION, RECONSTRUCTION, REPLACEMENT, REPAIR, OPERATION AND MAINTENANCE OF WIRES, CABLES, CONDUITS, FIXTURES, POLES, TOWERS, PIPES, AND EQUIPMENT FOR THE DISTRIBUTION OF ELECTRICITY AND GAS; TELEPHONE AND CABLE TELEVISION; WASTEWATER COLLECTORS; STORM DRAINS; WATER MAINS AND ALL APPURTENANCES THERETO, OVER, UPON, OR UNDER THE EASEMENTS AS SHOWN ON THE FOREGOING PLAT.

THE CONSTRUCTION OR LOCATION OF ANY BUILDING OR STRUCTURE, EXCLUDING FENCES, OVER, UPON, OR UNDER ANY EASEMENT SHOWN THEREON SHALL BE PROHIBITED.

THE CONSTRUCTION OR LOCATION OF ANY FENCE OR OTHER IMPROVEMENT WHICH OBSTRUCTS DRAINAGE SHALL BE PROHIBITED OVER, UPON, OR UNDER ANY STORM DRAIN EASEMENT OR DRAINAGE EASEMENT SHOWN THEREON.

THE CITY OF LINCOLN, ITS SUCCESSORS OR ASSIGNS ARE HEREBY HELD HARMLESS FOR THE COST OF REPLACEMENT OR DAMAGE TO ANY IMPROVEMENT OR VEGETATION OVER, UPON, OR UNDER ANY EASEMENT SHOWN THEREON.

THE STREETS SHOWN ARE HEREBY DEDICATED TO THE PUBLIC. THE ACCESS EASEMENTS AND THE PEDESTRIAN WAY EASEMENTS SHOWN THEREON SHALL BE USED FOR PUBLIC ACCESS AND THE PUBLIC IS HEREBY GRANTED THE RIGHT OF SUCH USE.

THE RIGHT OF DIRECT VEHICULAR ACCESS TO NW 1ST. STREET, HIGHLAND BLVD. NW 12TH. STREET, FLETCHER AVENUE, AND U.S. HIGHWAY NO. 34 FROM LOTS ABUTTING SAID STREET(S) IS HEREBY RELINQUISHED.

WITNESS MY HAND THIS 5th DAY OF May 1993

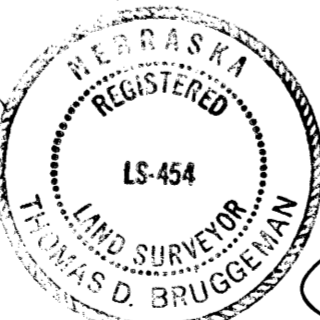
THE CITY OF LINCOLN, NEBRASKA
A MUNICIPAL CORPORATION
MAYOR MIKE JOHANNIS

DUNCAN AVIATION, INC.,
A NEBRASKA CORPORATION
J. ROBERT DUNCAN, PRESIDENT

CRETE CARRIER CORPORATION
A NEBRASKA CORPORATION
TONN M. OSTERGARD, PRESIDENT

ACCEPTANCE

THE FOREGOING PLAT AND DEDICATION WAS APPROVED AND ACCEPTED BY THE CITY COUNCIL OF THE CITY OF LINCOLN, NEBRASKA BY ORDINANCE NO. 16436 PASSED ON THIS 2nd DAY OF AUGUST 1993



APRIL 14th 1993
DATE

ATTEST: *Paula M. Maguire*
CITY CLERK

Thomas Bruggeman
THOMAS BRUGGEMAN
OLSSON ASSOCIATES
611 NBC CENTER
LINCOLN, NE. 68508

454
L.S. NUMBER

HIGHLANDS COALITION

FINAL PLAT

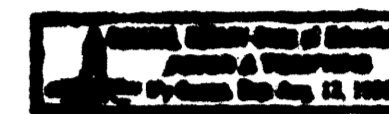
ACKNOWLEDGEMENT OF NOTARY

STATE OF NEBRASKA
COUNTY OF LANCASTER

ON THIS 27th DAY OF April 19 93, BEFORE ME, THE UNDERSIGNED, A NOTARY PUBLIC, DULY COMMISSIONED, QUALIFIED IN AND FOR SAID COUNTY AND STATE, PERSONALLY CAME TONN M. OSTERGARD WHO IS PERSONALLY KNOWN TO ME TO BE THE IDENTICAL PERSON WHOSE NAME IS AFFIXED TO THIS PLAT AS PRESIDENT OF CRETE CARRIER CORPORATION, A NEBRASKA CORPORATION, AND HE ACKNOWLEDGES THE EXECUTION THEREOF TO BE HIS VOLUNTARY ACT AND DEED AND THE VOLUNTARY ACT AND DEED OF SAID COMPANY.

MY COMMISSION EXPIRES ON THE 13th DAY OF August 19 93 A.D.

Peter J. Tompkins
NOTARY PUBLIC



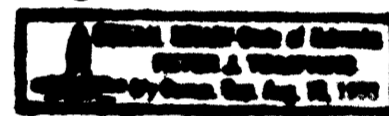
ACKNOWLEDGEMENT OF NOTARY

STATE OF NEBRASKA
COUNTY OF LANCASTER

ON THIS 27th DAY OF April 19 93, BEFORE ME, THE UNDERSIGNED, A NOTARY PUBLIC, DULY COMMISSIONED, QUALIFIED IN AND FOR SAID COUNTY AND STATE, PERSONALLY CAME J. ROBERT DUNCAN WHO IS PERSONALLY KNOWN TO ME TO BE THE IDENTICAL PERSON WHOSE NAME IS AFFIXED TO THIS PLAT AS PRESIDENT OF DUNCAN AVIATION, INC., A NEBRASKA CORPORATION, AND HE ACKNOWLEDGES THE EXECUTION THEREOF TO BE HIS VOLUNTARY ACT AND DEED AND THE VOLUNTARY ACT AND DEED OF SAID COMPANY.

MY COMMISSION EXPIRES ON THE 13th DAY OF August 19 93 A.D.

Peter J. Tompkins
NOTARY PUBLIC



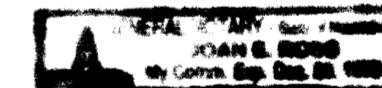
ACKNOWLEDGEMENT OF NOTARY

STATE OF NEBRASKA
COUNTY OF LANCASTER

ON THIS 5th DAY OF May 19 93, BEFORE ME, THE UNDERSIGNED, A NOTARY PUBLIC, DULY COMMISSIONED, QUALIFIED IN AND FOR SAID COUNTY AND STATE, PERSONALLY CAME MAYOR MIKE JOHANNIS WHO IS PERSONALLY KNOWN TO ME TO BE THE IDENTICAL PERSON WHOSE NAME IS AFFIXED TO THIS PLAT AS THE MAYOR OF THE CITY OF LINCOLN, NEBRASKA A MUNICIPAL CORPORATION AND HE ACKNOWLEDGES THE EXECUTION THEREOF TO BE HIS VOLUNTARY ACT AND DEED AND THE VOLUNTARY ACT AND DEED OF THE CITY OF LINCOLN.

MY COMMISSION EXPIRES ON THE 20 DAY OF December 19 93 A.D.

Joan E. Ross
NOTARY PUBLIC



APPROVAL

THE FOREGOING PLAT WAS APPROVED BY THE LINCOLN CITY-LANCASTER COUNTY PLANNING COMMISSION ON THIS 17th DAY OF February 19 93.

ATTEST: *Julianne Holbrook*
CHAIR

SHEET 10 OF 10

Handwritten notes and stamps: A-307, A-307A, A-308, A-308A, A-309, 10/26/80, INST. NO 93, 4365, 22400, 48320.