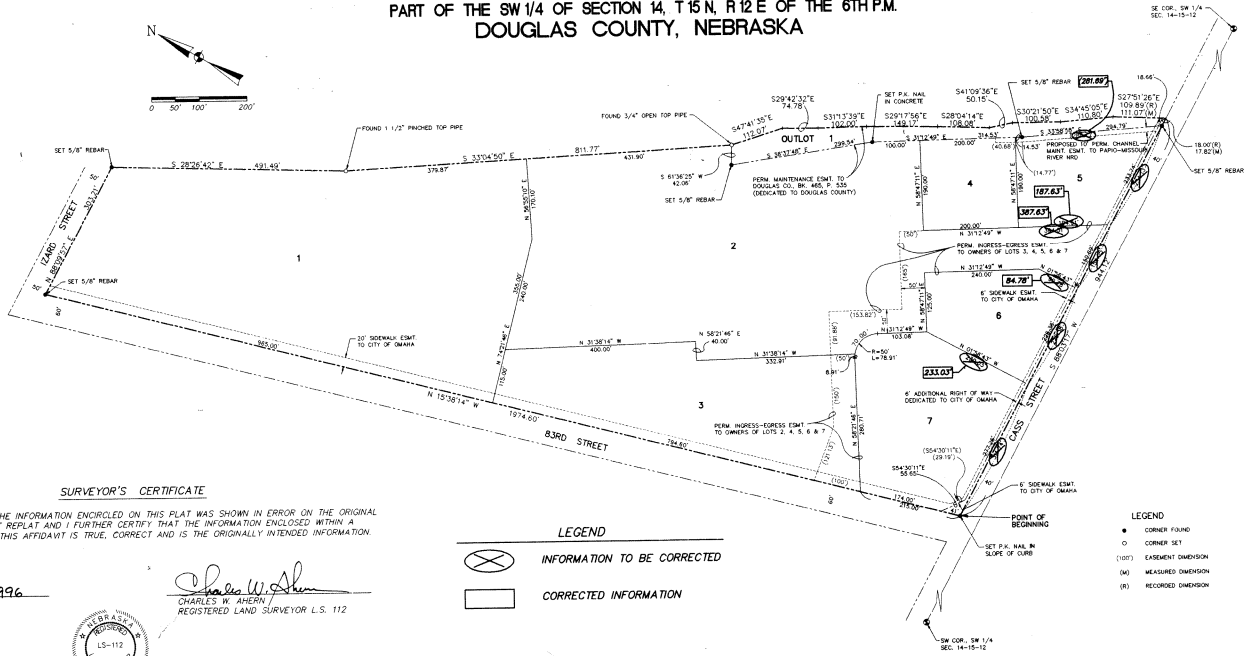


AFFIDAVIT

THESE ARE CORRECTIONS TO CASS STREET REPLAT
(CORRECTIONS TO LOTS 2, 5, 6, AND 7 ONLY)

CASS STREET REPLAT (CLUSTER SUBDIVISION)

LOTS 1 THRU 7, INCLUSIVE AND OUTLOT 1
PART OF THE SW 1/4 OF SECTION 14, T15 N, R12 E OF THE 6TH P.M.
DOUGLAS COUNTY, NEBRASKA



SURVEYOR'S CERTIFICATE

THIS IS TO CERTIFY THAT THE INFORMATION ENCLOSED ON THIS PLAT WAS SHOWN IN ERROR ON THE ORIGINAL PLATTING OF CASS STREET REPLAT AND I FURTHER CERTIFY THAT THE INFORMATION ENCLOSED WITHIN A RECTANGLE AS SHOWN ON THIS AFFIDAVIT IS TRUE, CORRECT AND IS THE ORIGINALLY INTENDED INFORMATION.

DATE Febr 14, 1996

Charles W. Ahern
CHARLES W. AHERN
REGISTERED LAND SURVEYOR L.S. 112



LEGEND

	INFORMATION TO BE CORRECTED
	CORRECTED INFORMATION

LEGEND

	CORNER FOUND
	CORNER SET
	EASEMENT DIMENSION
	MEASURED DIMENSION
	RECORDED DIMENSION

**KIRKHAM
MICHAEL**
CONSULTING ENGINEERS
1115 WEST 3000 ROAD, 215.000 21105, OMAHA, NEBRASKA 68114
(402) 392-5500 FAX (402) 355-3800

THIS IS TO CERTIFY THAT THE INFORMATION ENCLOSED ON THIS PLAT WAS SHOWN IN ERROR ON THE ORIGINAL PLATTING OF CASS STREET REPLAT AND I FURTHER CERTIFY THAT THE INFORMATION ENCLOSED WITHIN A RECTANGLE AS SHOWN ON THIS AFFIDAVIT IS TRUE, CORRECT AND IS THE ORIGINALLY INTENDED INFORMATION.
 DATE Febr 14, 1996
 CHARLES W. AHERN
 REGISTERED LAND SURVEYOR L.S. 112

