



RECEIVED

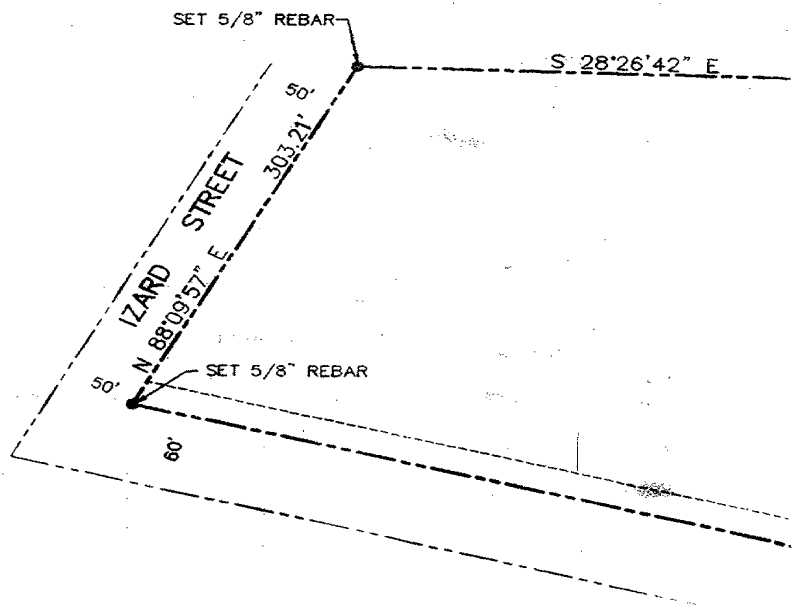
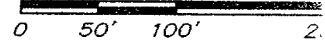
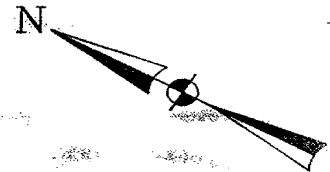
FEB 16 10 50 AM '96

GEORGE J. BUBLEWIGZ
REGISTER OF DEEDS
DOUGLAS COUNTY, NE

TH

Cash 01742 H

FEE 52.00	R	FB 53-05932
DEL.	C/O	COMP MB
LEGAL PG	SCAN	WV



RECEIVED

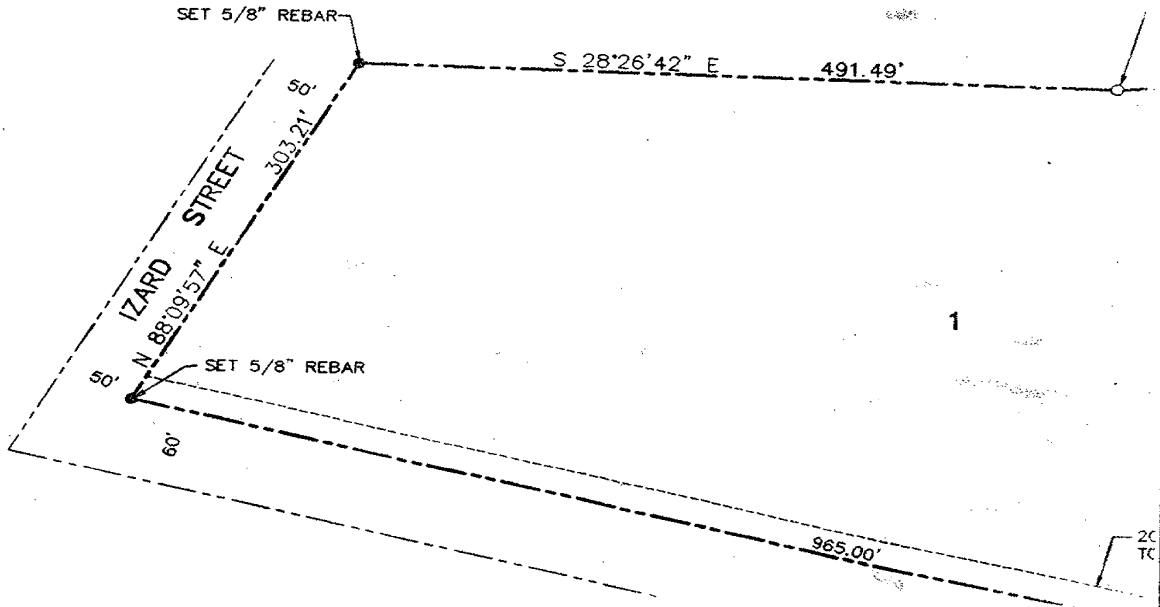
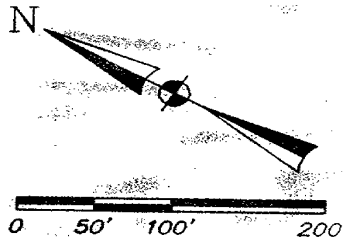
FEB 16 10 50 AM '96

GEORGE J. BUGLEWICZ
REGISTER OF DEEDS
DOUGLAS COUNTY, NE

THESE ARE

Case 01745 H

REC 5200	R	FB 53-05A32
DEL	C/O	COMP/MB
LEGAL PG	SCAN	FV

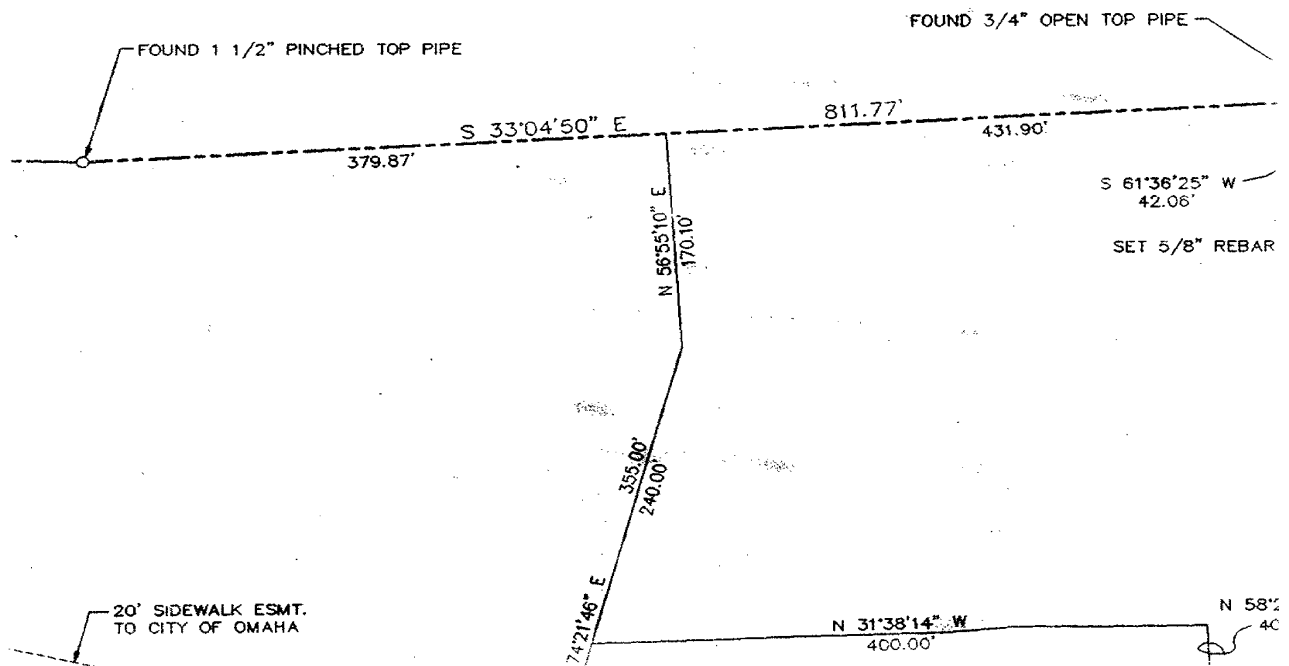


AFFIDAV

ARE CORRECTIONS TO ((CORRECTIONS TO LOTS 2, 5,

CASS STREET (CLUSTER SUBC

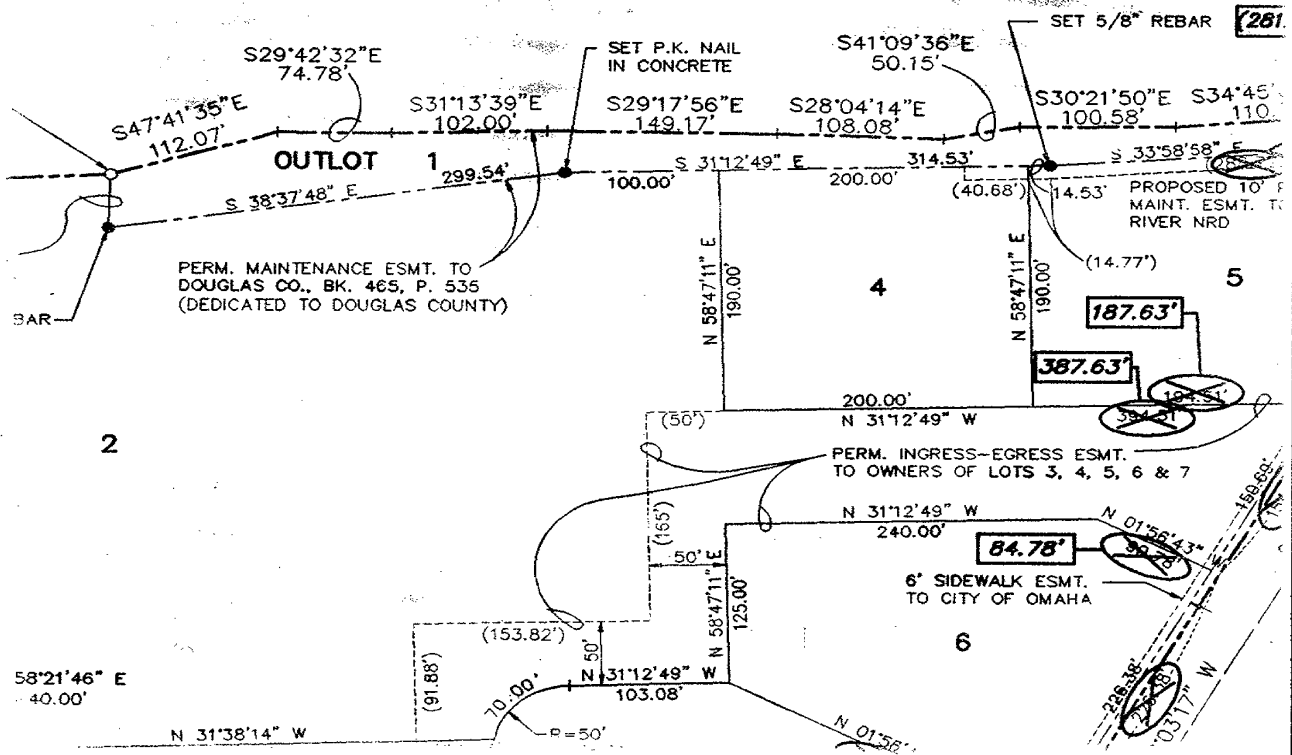
LOTS 1 THRU 7, INCLUSIVE A PART OF THE SW 1/4 OF SECTION 14, T 15 N DOUGLAS COUNTY, NE



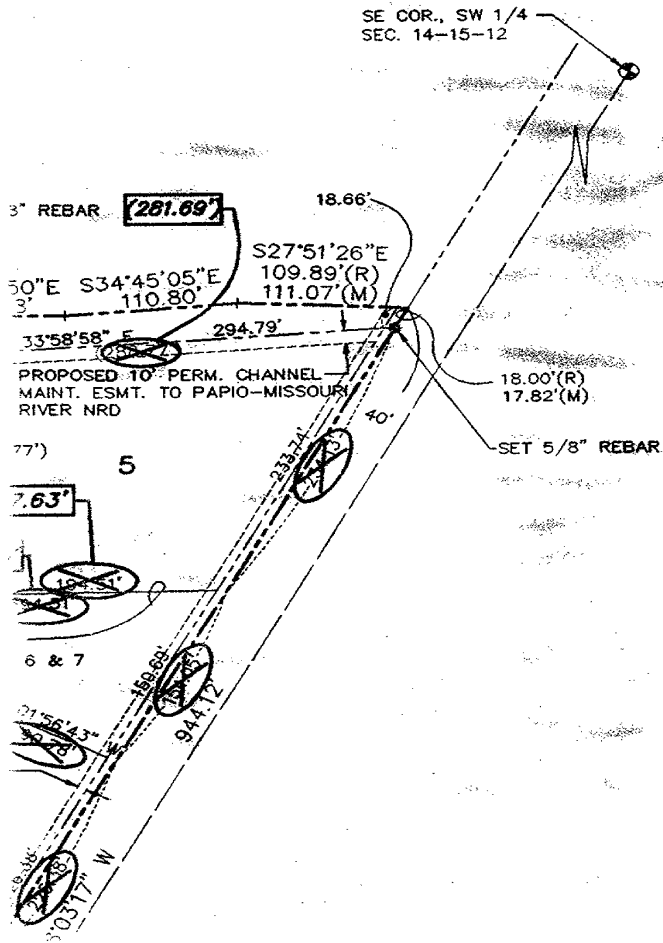
VIT

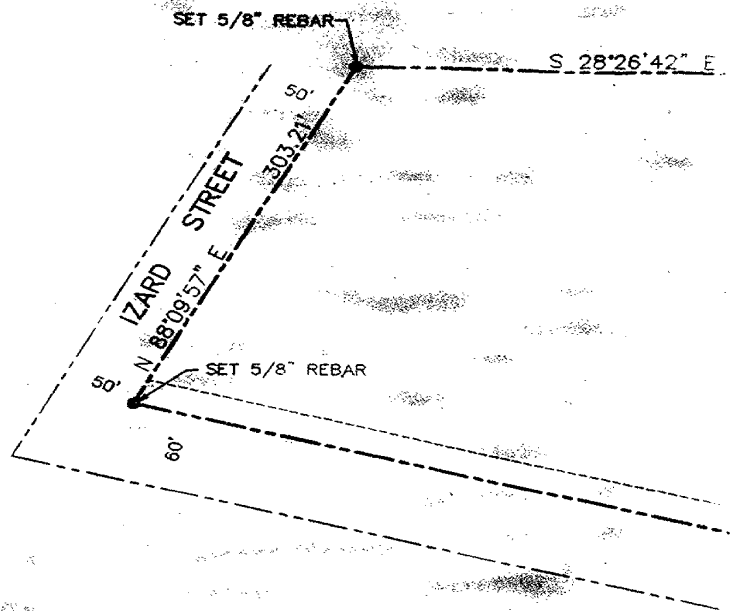
CASS STREET REPLAT (6, AND 7 ONLY)

REPLAT DIVISION) AND OUTLOT 1 N, R 12 E OF THE 6TH P.M. NEBRASKA



T



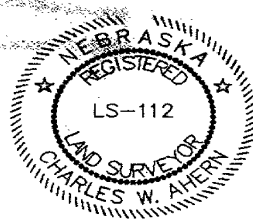


SURVEYOR'S CERTIFICATE

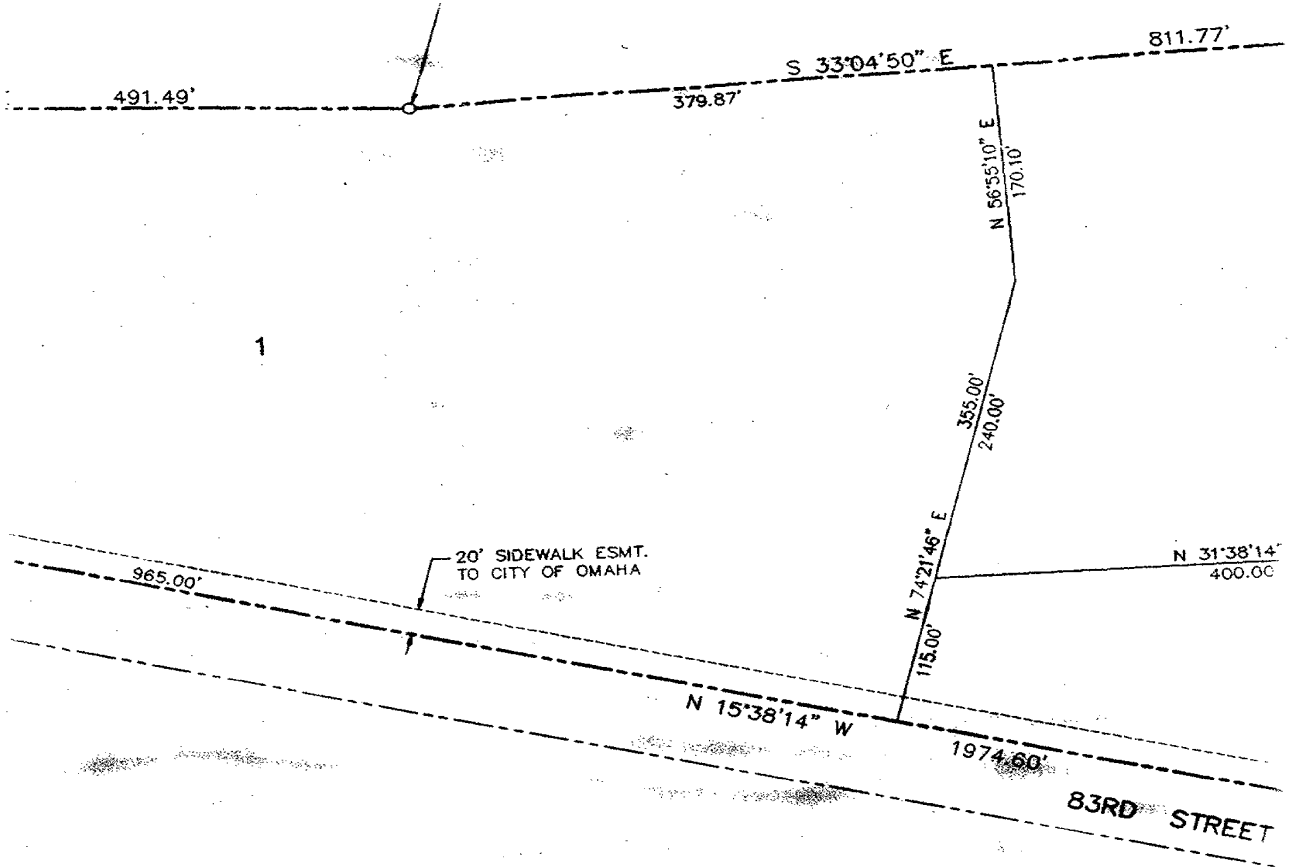
THIS IS TO CERTIFY THAT THE INFORMATION ENCIRCLED ON THIS PLAT WAS SHOWN ON THE ORIGINAL PLATTING OF CASS STREET REPLAT AND I FURTHER CERTIFY THAT THE INFORMATION CONTAINED IN THIS RECTANGLE AS SHOWN ON THIS AFFIDAVIT IS TRUE, CORRECT AND IS THE ORIGINAL

DATE Febr. 14, 1996

Charles W. Ahern
CHARLES W. AHERN
REGISTERED



1-13-1996
KMP: 940431
04-13-17
D/D
SUSAN M. HANSEN



SHOWN IN ERROR ON THE ORIGINAL
 INFORMATION ENCLOSED WITHIN A
 ORIGINALLY INTENDED INFORMATION.

W. Ahern
 W. AHERN
 SURVEYED LAND SURVEYOR L.S. 112

LEGEND



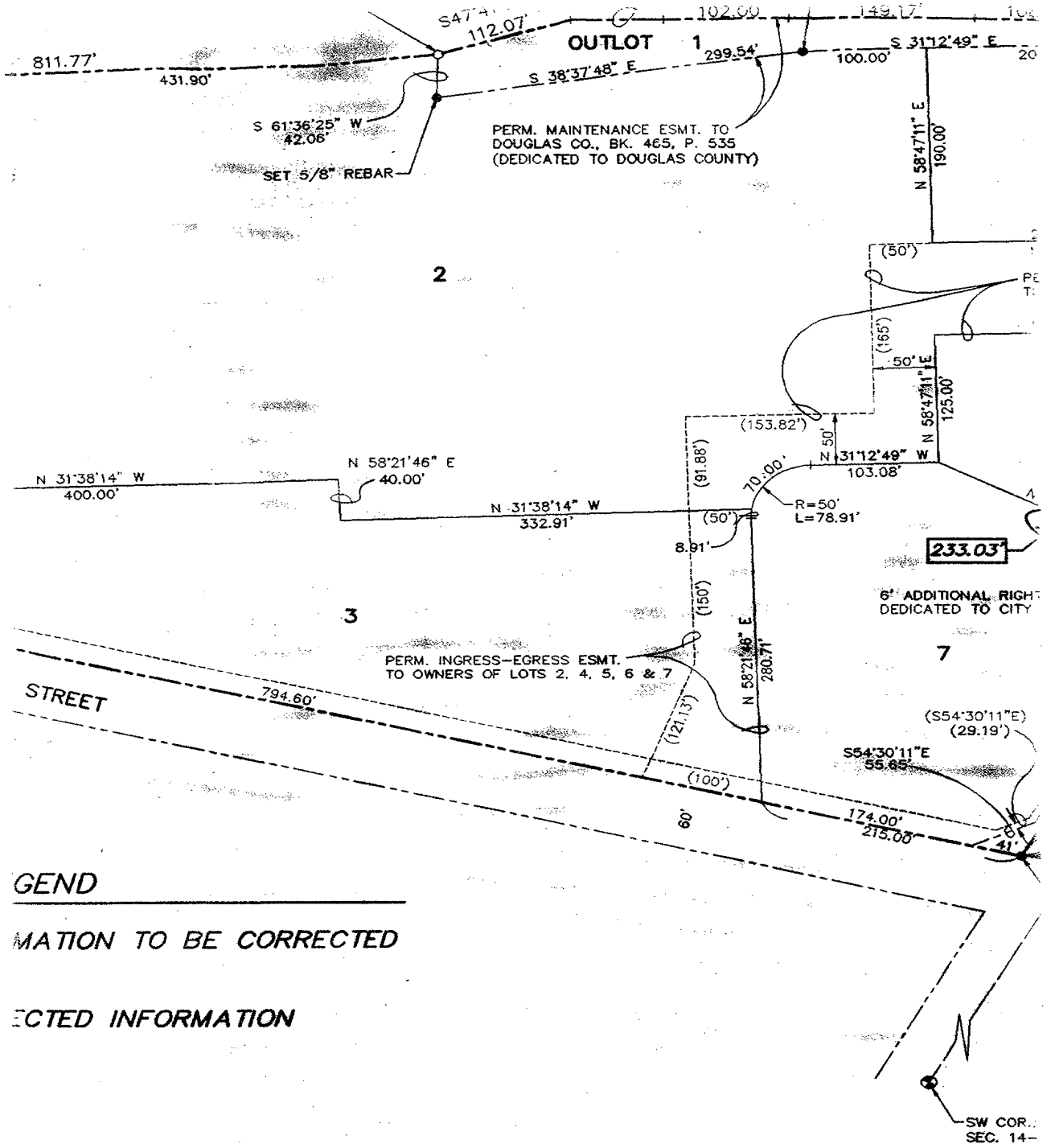
INFORMATION



CORRECTED

Return

KMI
CONSULTING
 9110 WEST DODGE ROAD, P.O. BOX 2
 (402) 393-5630 FAX

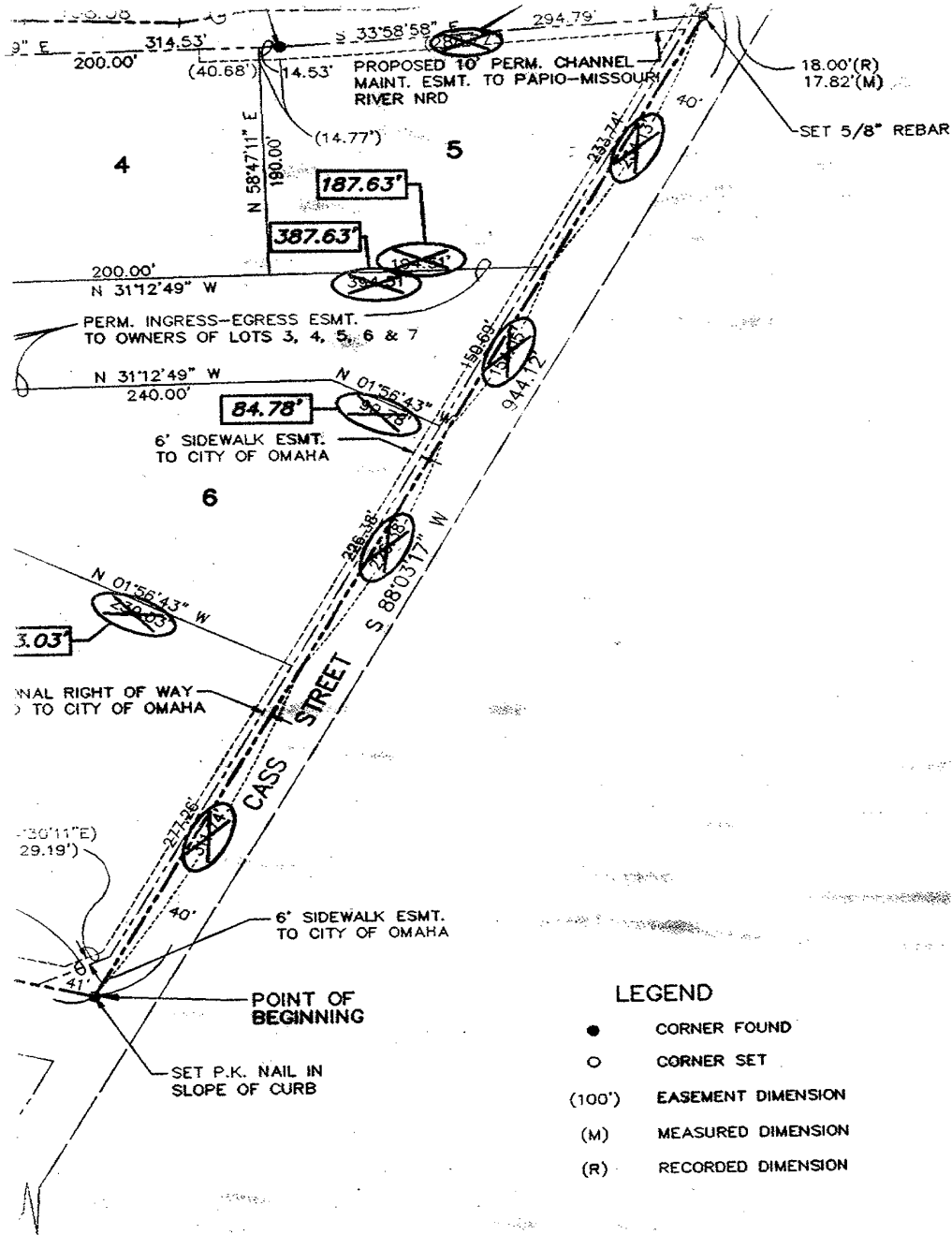


GEND

ATION TO BE CORRECTED

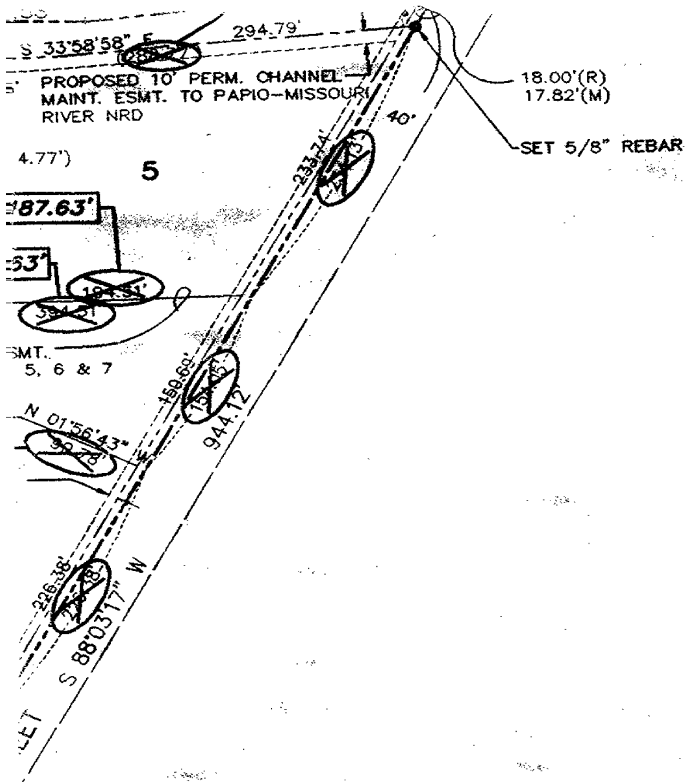
ECTED INFORMATION

**KIRKHAM
MICHAEL**
ING ENGINEERS
P.O. BOX 24129, OMAHA, NEBRASKA 68124
5630 FAX (402) 255-3850



- LEGEND**
- CORNER FOUND
 - CORNER SET
 - (100') EASEMENT DIMENSION
 - (M) MEASURED DIMENSION
 - (R) RECORDED DIMENSION

SW COR., SW 1/4
SEC. 14-15-12



EWALK ESMT.
TY OF OMAHA

OF
ING

LEGEND

- CORNER FOUND
- CORNER SET
- (100') EASEMENT DIMENSION
- (M) MEASURED DIMENSION
- (R) RECORDED DIMENSION

SHEET 1 OF 1
KM M950931