

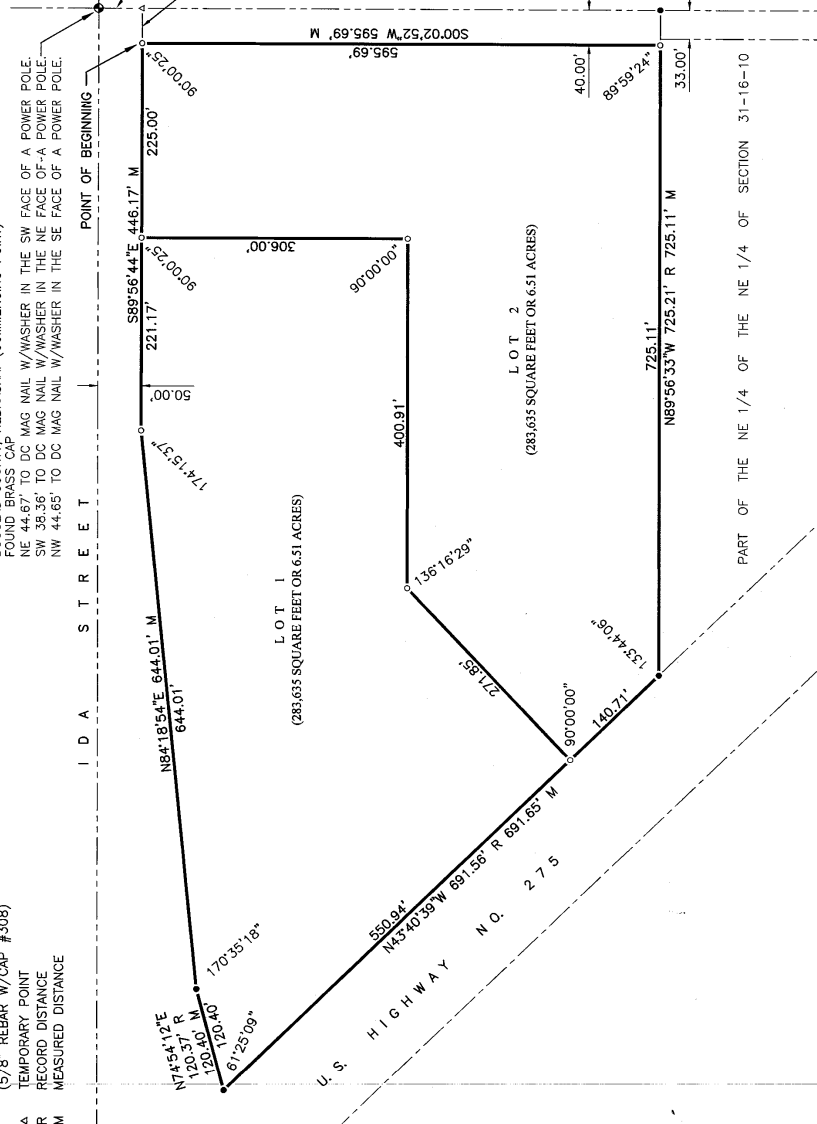
264 IDA

LOTS 1 AND 2

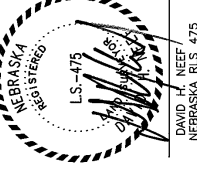
BEING A PLATTING OF THAT PART OF THE NE 1/4 OF SECTION 31, T16N, R10E OF THE 6TH P.M., DOUGLAS COUNTY, NEBRASKA, DESCRIBED AS FOLLOWS:
 COMMENCING AT THE NE CORNER OF SAID SECTION 31;
 THENCE S00°02'52"W (ASSUMED BEARING) 50.00 FEET ON THE EAST LINE OF SAID SECTION 31;
 THENCE N89°56'44"W 40.00 FEET ON A LINE 50.00 FEET SOUTH OF AND PARALLEL WITH THE NORTH LINE OF SAID SECTION 31 TO THE POINT OF BEGINNING;
 THENCE S00°02'52"W 595.69 FEET ON A LINE 40.00 FEET WEST OF AND PARALLEL WITH THE NORTH LINE OF SAID SECTION 31 TO THE SOUTH LINE ON A TRACT OF LAND DESCRIBED IN INSTRUMENT NUMBER 2014-089283 OF THE DOUGLAS COUNTY RECORDS AND HEREINAFTER CALLED TRACT "A";
 THENCE N89°56'33"W 725.11 FEET ON THE SOUTH LINE OF SAID TRACT "A" TO THE SW CORNER THEREOF, SAID CORNER BEING ON THE EAST LINE OF U.S. HIGHWAY NO. 275;
 THENCE N45°40'39"W 691.65 FEET ON THE EAST LINE OF U.S. HIGHWAY NO. 275;
 THENCE N74°54'12"E 120.40 FEET ON THE EAST LINE OF U.S. HIGHWAY NO. 275;
 THENCE N84°18'54"E 644.01 FEET ON THE NORTH LINE OF SAID SECTION 31;
 THENCE S89°56'44"W 44.17 FEET ON A LINE 60.00 FEET SOUTH OF AND PARALLEL WITH THE NORTH LINE OF SAID SECTION 31 TO THE POINT OF BEGINNING.

- LEGEND**
- CORNERS FOUND (5/8" REBAR UNLESS NOTED)
 - CORNERS SET (5/8" REBAR W/CAP #308)
 - ▲ TEMPORARY POINT
 - R RECORD DISTANCE
 - M MEASURED DISTANCE

NE CORNER OF SECTION 31, T16N, R10E OF THE 6TH P.M., DOUGLAS COUNTY, NEBRASKA, (COMMENCING POINT) FOUND BRASS C/P NE 44.67' TO DC MAG NAIL W/WASHER IN THE SW FACE OF A POWER POLE SW 38.36' TO DC MAG NAIL W/WASHER IN THE NE FACE OF A POWER POLE NW 44.65' TO DC MAG NAIL W/WASHER IN THE SE FACE OF A POWER POLE.



SURVEYOR'S CERTIFICATE
 I HEREBY CERTIFY THAT I AM A PROFESSIONAL LAND SURVEYOR, REGISTERED IN COMPLIANCE WITH THE LAWS OF THE STATE OF NEBRASKA, THAT THIS ADMINISTRATIVE SUBDIVISION OF THE SUBDIVISION OF 264 IDA, WAS APPROVED BY THE SUPERVISOR ON JUNE 6, 2019, THAT ANY CHANGES FROM THE DESCRIPTION APPEARING IN THE LAST RECORD TRANSFER OF THE LAND CONTAINED IN THE FINAL PLAT ARE SO INDICATED, THAT ALL MONUMENTS SHOWN THEREON ACTUALLY EXIST AS DESCRIBED OR WILL BE INSTALLED AND THEIR POSITION IS CORRECTLY SHOWN AND THAT ALL DIMENSIONAL DATA IS CORRECT.



DATE: JUNE 6, 2019

DAVID A. NEEF
 NEBRASKA RLS 475

OWNER'S CERTIFICATION
 THAT WE, FOUTCH PROPERTIES, L.L.C., THE UNDERSIGNED OWNERS OF THE REAL ESTATE SHOWN AND DESCRIBED HEREON, DO HEREBY CERTIFY THAT WE HAVE CAUSED TO BE LAID OUT, PLATTED AND SUBDIVIDED, AND DO HEREBY LAY OUT, PLAT AND SUBDIVIDE SAID REAL ESTATE IN ACCORDANCE WITH THIS PLAT. THIS PLAT IS THE FINAL PLAT FOR THE SUBDIVISION OF 264 IDA, AS SHOWN TO THE CITY OF VALLEY, NEBRASKA, CLEAR TITLE TO THE LAND CONTAINED IN THIS PLAT IS GUARANTEED. THERE ARE NO ENCUMBRANCES OR SPECIAL ASSESSMENTS.

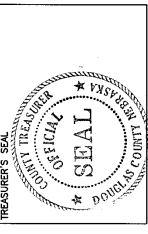
FOUTCH PROPERTIES, L.L.C.
 BY: BRIAN A. FOUTCH,
 MANAGING MEMBER

ACKNOWLEDGEMENT OF NOTARY
 STATE OF NEBRASKA
 COUNTY OF DOUGLAS

THE FOREGOING DEDICATION WAS ACKNOWLEDGED BEFORE ME THIS 29th DAY OF October, 2019 BY BRIAN A. FOUTCH, MANAGING-MEMBER OF FOUTCH PROPERTIES, L.L.C., ON BEHALF OF SAID L.L.C.

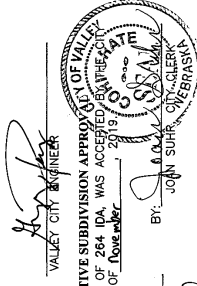
CHRIS E. DORNER
 GENERAL NOTARY - State of Nebraska
 My Comm. Expires 12/31/2023
 NOTARY PUBLIC

COUNTY TREASURER'S CERTIFICATE
 THIS IS TO CERTIFY THAT I FIND NO REGULAR OR SPECIAL TAXES DUE OR DELINQUENT AGAINST THE PROPERTY DESCRIBED IN THE SURVEYOR'S CERTIFICATE AND ENCASED WITHIN THIS PLAT AS SHOWN ON THE RECORDS OF THIS OFFICE THIS 29th DAY OF October, 2019.



Susan Strassheim
 DOUGLAS COUNTY TREASURER

APPROVAL BY THE CITY OF VALLEY CITY ENGINEER
 THIS ADMINISTRATIVE SUBDIVISION OF 264 IDA, LOTS 1 AND 2, WAS REVIEWED AND APPROVED BY THE VALLEY CITY ENGINEER ON THIS 6th DAY OF November, 2019.



JOHN SUHRE
 VALLEY CITY ENGINEER

BY: CARROLL SMITH, MAJOR
 MICHAEL BURNS, CHIEF BUILDING OFFICIAL

REVIEW BY THE DOUGLAS COUNTY ENGINEER
 THIS ADMINISTRATIVE SUBDIVISION OF 264 IDA WAS REVIEWED BY THE DOUGLAS COUNTY ENGINEER.

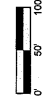


10/25/19
 DATE: 10/25/19
 DOUGLAS COUNTY ENGINEER



TD2 Engineering & Surveying, Inc.
 1528 North 14th Street
 Omaha, NE 68154
 P: 402.330.8680 F: 402.330.8686
 t2co.com

264 IDA
 LOTS 1 AND 2



No.	Description	MM-DD-YY

Job No.: 200-19-82(ADM)
 Drawn By: RJR
 Reviewed By: DHN
 Date: JUNE 6, 2019
 Book: 1921
 Pages: 4-8

CITY OF VALLEY
 ADMINISTRATIVE PLAT

SHEET NUMBER
SHEET 1 OF 1