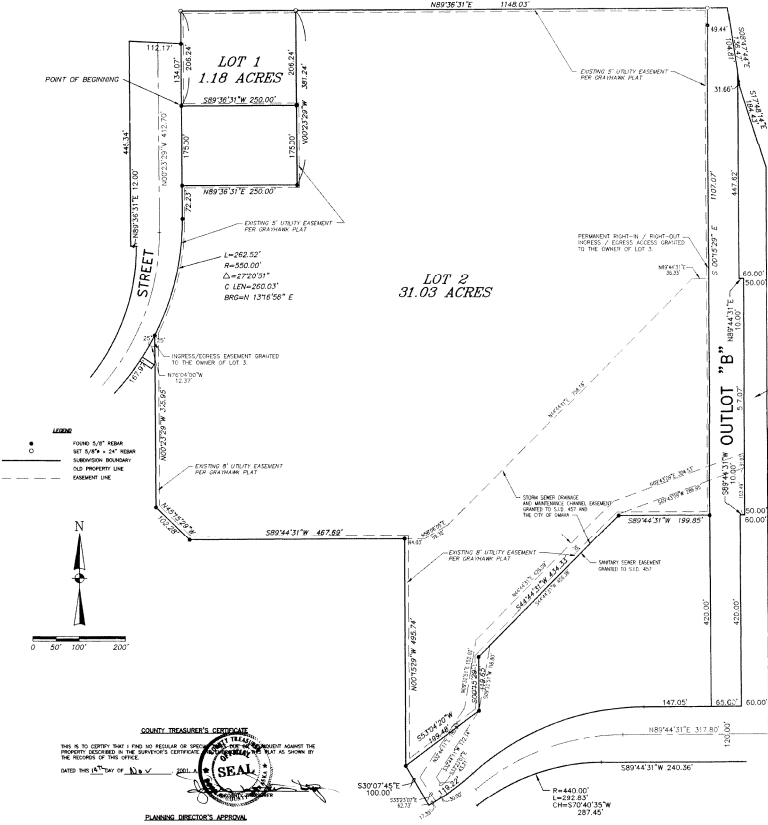


WEST MAPLE ROAD

# GRAYHAWK REPLAT 2

LOTS 1 AND 2 INCLUSIVE BEING A REPLAT OF LOTS 1 AND 3 GRAYHAWK AND A PORTION OF THE NE 1/4 OF SEC. 11, T 15 N, R 11 E, OF THE 6 TH P.M. DOUGLAS COUNTY, NEBRASKA

N.D.O.R. RIGHT-OF-WAY



**LEGAL DESCRIPTION**

LOTS 1 AND 2 GRAYHAWK, A PLATTED AND RECORDED SUBDIVISION, AND A PORTION OF THE NE 1/4 OF SECTION 11, T. 15 N., R. 11 E., OF THE 6 TH P.M., DOUGLAS COUNTY, NEBRASKA, BEING MORE PARTICULARLY DESCRIBED AS FOLLOWS:

**OWNER'S CERTIFICATE**

I, the undersigned, owner of the above described property in common, do hereby certify and warrant that the plat and map shown hereon are true and correct and that the same are in accordance with the original survey and plan thereon.

*Robert J. ...* 11/03/01  
*Kevin ...* 11/03/01  
*Paul ...* 11/03/01  
 11/09/01  
 11/09/01

**SUBDIVIDER'S CERTIFICATE**

I, the undersigned, as subdivider of the above described property in common, do hereby certify and warrant that the plat and map shown hereon are true and correct and that the same are in accordance with the original survey and plan thereon.

*Chad W. ...* 11/03/01  
 11/09/01

**COOPERATION ACKNOWLEDGMENT**

STATE OF NEBRASKA  
 COUNTY OF DOUGLAS  
 I, the undersigned, do hereby certify and warrant that the plat and map shown hereon are true and correct and that the same are in accordance with the original survey and plan thereon.

**LIEN HOLDERS CERTIFICATION**

I, the undersigned, as a lien holder on the above described property in common, do hereby certify and warrant that the plat and map shown hereon are true and correct and that the same are in accordance with the original survey and plan thereon.

*...* 11/01/01

**COOPERATION ACKNOWLEDGMENT**

STATE OF NEBRASKA  
 COUNTY OF DOUGLAS  
 I, the undersigned, do hereby certify and warrant that the plat and map shown hereon are true and correct and that the same are in accordance with the original survey and plan thereon.

**COOPERATION ACKNOWLEDGMENT**

STATE OF NEBRASKA  
 COUNTY OF DOUGLAS  
 I, the undersigned, do hereby certify and warrant that the plat and map shown hereon are true and correct and that the same are in accordance with the original survey and plan thereon.

**COOPERATION ACKNOWLEDGMENT**

STATE OF NEBRASKA  
 COUNTY OF DOUGLAS  
 I, the undersigned, do hereby certify and warrant that the plat and map shown hereon are true and correct and that the same are in accordance with the original survey and plan thereon.

**COOPERATION ACKNOWLEDGMENT**

STATE OF NEBRASKA  
 COUNTY OF DOUGLAS  
 I, the undersigned, do hereby certify and warrant that the plat and map shown hereon are true and correct and that the same are in accordance with the original survey and plan thereon.

**COOPERATION ACKNOWLEDGMENT**

STATE OF NEBRASKA  
 COUNTY OF DOUGLAS  
 I, the undersigned, do hereby certify and warrant that the plat and map shown hereon are true and correct and that the same are in accordance with the original survey and plan thereon.

**COOPERATION ACKNOWLEDGMENT**

STATE OF NEBRASKA  
 COUNTY OF DOUGLAS  
 I, the undersigned, do hereby certify and warrant that the plat and map shown hereon are true and correct and that the same are in accordance with the original survey and plan thereon.

**COOPERATION ACKNOWLEDGMENT**

STATE OF NEBRASKA  
 COUNTY OF DOUGLAS  
 I, the undersigned, do hereby certify and warrant that the plat and map shown hereon are true and correct and that the same are in accordance with the original survey and plan thereon.

**COOPERATION ACKNOWLEDGMENT**

STATE OF NEBRASKA  
 COUNTY OF DOUGLAS  
 I, the undersigned, do hereby certify and warrant that the plat and map shown hereon are true and correct and that the same are in accordance with the original survey and plan thereon.

**COOPERATION ACKNOWLEDGMENT**

STATE OF NEBRASKA  
 COUNTY OF DOUGLAS  
 I, the undersigned, do hereby certify and warrant that the plat and map shown hereon are true and correct and that the same are in accordance with the original survey and plan thereon.

**COOPERATION ACKNOWLEDGMENT**

STATE OF NEBRASKA  
 COUNTY OF DOUGLAS  
 I, the undersigned, do hereby certify and warrant that the plat and map shown hereon are true and correct and that the same are in accordance with the original survey and plan thereon.

**NOTES**

1. ALL EASEMENTS SHOWN ARE PERMANENT EASEMENTS GRANTED TO THE STATE OF NEBRASKA BY THE NEBRASKA HIGHWAY DEPARTMENT.
2. ALL CURB DATA IS BASED ON THE A.C. DEPARTMENT.
3. NO DIRECT VEHICULAR ACCESS WILL BE ALLOWED TO WEST MAPLE ROAD FROM LOTS 1 AND 2.
4. RIGHT OF WAY ACCESS TO 144TH STREET WILL BE ALLOWED AT A LOCATION SHOWN FOR LOT 1.
5. NO DIRECT VEHICULAR ACCESS WILL BE ALLOWED TO 144TH STREET FROM LOTS 1 AND 2.
6. PROPOSED IMPROVEMENTS TO 144TH STREET SHOWN LOTS 1 AND 2 WILL BE COMPLETED AT THE END OF DEVELOPMENT.

31-145 PG 133-332  
 01800-26 P12 P1-00  
 11/03/01 11/03/01