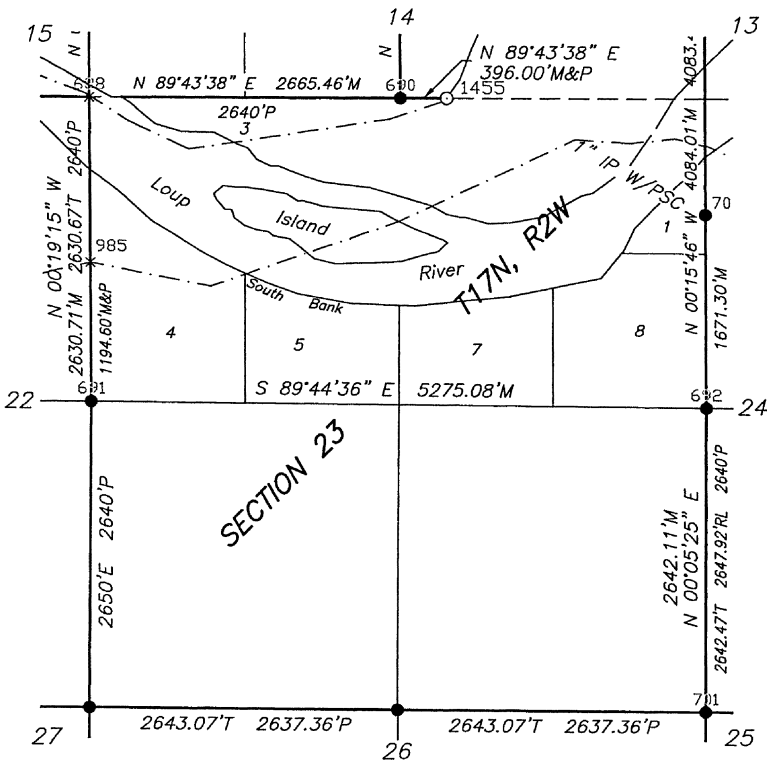


PLATTE COUNTY, NEBRASKA RECORD OF SURVEY

1" = 1320'



-Legend-

- Found Monument
- Set Monument
- x Computed Location
- M Measured this Survey
- P Platted Measurement General Land Office

Recorded Measurement:

- N Nebraska Dept. of Roads
- R L.F. Gottshalk
- T T.A. Tremel, L.S. #455
- J J.A. McMeekin, L.S. #165
- G B.L. Gilmore, L.S. #96
- W B.L. Willman, L.S. #316
- X I.R. Mierau, L.S. #285
- K F.C. Kuska, L.S. #234
- CW C.M. Wurdeman
- HW H.C. Wurdeman, L.S. #9
- RA R.A. Rystrom, L.S. #241
- RL R.L. Rossiter
- RB R.F. Burns, L.S. #39
- E J. Eusden
- V J.J. VETICK, L.S. #500
- B B.D. BENCK, L.S. #536
- JS J. Stibal
- VM V.M. Petersen, L.S. #119
- F CR Flowers, L.S. #357
- CM C.W. Marsh, L.S. #560
- C R.S. Clark
- NP NE Public Power District
- L LG Gerrard, L.S. #290
- JW JE Wallick
- GM GL Miller
- A State of NE Application Survey
- LP Loup (River) Public Power District
- OP O. Person
- EB EM Breuer, L.S. #586

All Bearings are referenced from True North
observed at the Northeast corner of Section 36, T17N, R1W.

Field Notes:

N17. Northeast Corner, Section 22, T17N, R2W – this corner falls in the river and the location was computed from the General Land Office survey on line and at proportionate measure between the E1/4 corner Section 22 and the E1/4 corner Section 15.
(Recorded February 12, 2009)

P17. E1/4 Corner, Section 22, T17N, R2W – found railroad spike, 6" deep, as recorded by T.A. Tremel, L.S. #455, February 12, 2009. After construction set MAG spike with washer at the surface of the asphalt. The railroad spike is still in place.
Ties: 42.67' SE to "X" nails in power pole
41.89' SW to "X" nails in corner fence post
32.48' NNW to "X" nails in telephone guard post
0.5' South to centerline of 197th Street E&W
2.0' West to centerline of 310th Avenue South

N19. N1/4 Corner, Section 23, T17N, R2W – found 1-1/4"x 4.3' iron pipe with the top 2.1' broken off. This monument was rebuilt by setting the remaining pipe down to 15" below the surface and perpetuating it with a 5/8"x 24" rebar and aluminum cap to 6" above grade.
Ties: 16.06' North to "X" nails in fence post
6.87' South to "X" nails in fence post
31.00' South to "X" nails in fence post
1.5' West to range of fence N&S
Set carsonite post in fence West of corner
(Recorded February 11, 2003)

M17/18. Meander corner between Sec. 14&23, T17N, R2W – set 5/8"x 24" rebar with aluminum cap by extending a line between the NW Corner and the N1/4 Corner, Section 23 at the General Land Office distance from the N1/4 Corner of Section 23. Set carsonite post 1 ft. North of corner.
Ties: 11.56' NW to 60d spike in 24" blazed tree
20.84' SE to 60d spike in 8" blazed tree
46.44' ENE to 60d spike in 24' blazed tree
(Recorded February 11, 2003)

Survey Record Repository
RECEIVED
NC
JAN 16 2014
PLATTE
1155 - 349 1/2

Field Notes Continued:

P21. E1/4 Corner, Section 23, T17N, R2W – found 5/8" rebar with aluminum cap as recorded by T.A. Tremel, L.S. #455, February 11, 2003. After construction set survey mark with washer at the surface of the asphalt. The 5/8" rebar with an aluminum cap is still in place.

Ties: 61.98' SW to "X" nails in gate post
 45.33' SE to "X" nails in power pole
 44.54' NE to "X" nails in power pole
 35.05' North to "X" in brace post
 3.4' West to range of fence North
 3.4' East to centerline of 295th Avenue South
 On centerline of 197th Street E&W

R17. Northeast Corner Section 27, T17N, R2W – found 6" x 10" x 2" limestone in a vertical position 12" deep. Set Magnet 4' deep and lowered stone to 3' deep and perpetuated with a 1" x 24" iron pipe and aluminum cap to 6" below the surface. The stone was found as recorded by J.A. McMeekin, L.S. #165,

April 10, 1973. Ties: 43.40' SW to "X" nails in top of fence post
 34.24' WSW to "X" nails in corner fence post
 37.93' NW to "X" nails in fence post
 34.0' West to range of fence North
 13'± East to centerline of county road (trail)
 On range of fence West
 (Recorded June 7, 2000)

R19. N1/4 Corner Section 26, T17N, R2W – Dug 15' x 15' x 4' area with backhoe and didn't find the corner. Re-established this corner on proportionate measure between the NE and NW section corners with a 5/8" x 24" rebar and plastic survey cap 3' deep and a 1" x 24" iron pipe with aluminum cap to 6" below the surface. Ties: 9.64' NE to NW corner of concrete pad for pivot

6.10' NE to "X" nails in end fence post
 36.06' West to "X" nails in lone fence post
 47.97' SE to "X" nails in stub power pole fence post
 6' East to carsonite post
 (Recorded June 7, 2000)

R21. Northeast Corner Section 26, T17N, R2W – found railroad spike in asphalt 2" deep as recorded by Thomas A. Tremel, L.S. #455 on June 7, 2000. After construction set survey mark with washer at the surface of the asphalt. The railroad spike is still in place.

Ties: 36.69' NW to SE corner of back column
 33.55' East to "X" nails in power pole
 41.33' SE to "X" nails in fence post
 38.76' SW to NE corner of brick column
 33.0' East to range of fence N&S
 33.5' East to range of power poles N&S
 0.7' North to range of power poles and fence West
 0.5' East to centerline of 295th Avenue N&S

Platte County Surveyor's Statement:

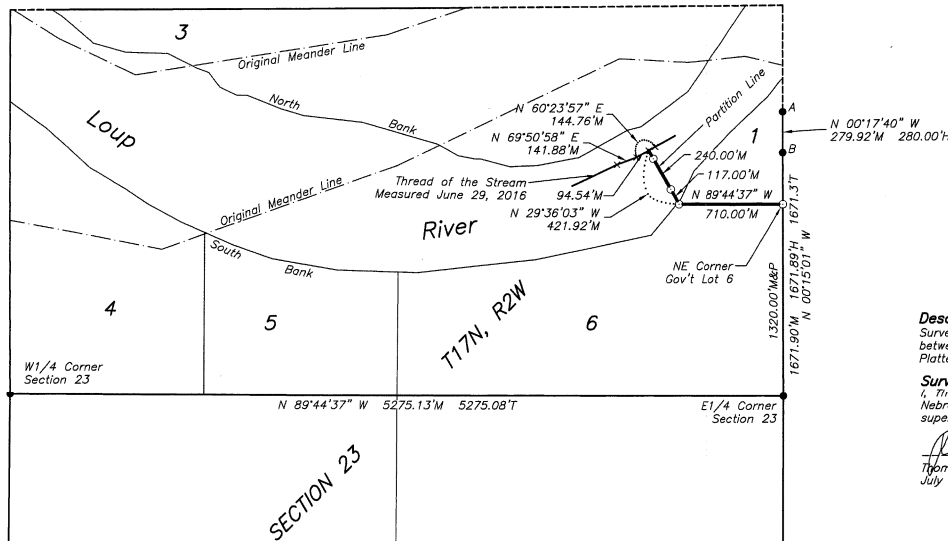
I, Thomas A. Tremel, a Registered Land Surveyor in the State of Nebraska, hereby state that this survey was conducted under my direct supervision and is correct to the best of my knowledge and belief.

Thomas A. Tremel

Thomas A. Tremel, L.S. #455
 Platte County Surveyor
 January 3, 2014

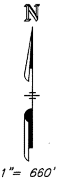


Note: All Bearings are referenced from True North observed at the Northeast Corner, Section 36, T17N, R1W.



-Legend-

- Found Monument
- Set 5/8" x 24" Rebar w/ Plastic Survey Cap
- × Thread of the Stream
- M Measured this Survey
- T Recorded Measurement T.A. Tremel, L.S. #455
- H Recorded Measurement C.C. Hays, L.S. #673
- P Plat Measurement General Land Office



Description:

Survey of the North Line of Government Lot 6 and survey of the partition line between Government Lots 1 and 6, Section 23, T17N, R2W of the 6th P.M., Platte County, Nebraska.

Surveyor's Statement:

I, Thomas A. Tremel, a Registered Land Surveyor in the State of Nebraska, hereby state that this survey was conducted under my direct supervision and is correct to the best of my knowledge and belief.

Thomas A. Tremel
 Thomas A. Tremel, L.S. #455
 July 8, 2016

Survey Record Repository
 RECEIVED

5th
 JUL 18 2016
 Platte
 1280-197



Field Notes:

Original Government Lot 2, Section 23, T17N, R2W no longer exists due to the movement of the Loup River.

A) Found 5/8" rebar with plastic cap as recorded by C.C. Hays, L.S. #673, January 4, 2016.

B) Found 1" iron pipe with plastic cap as recorded by C.C. Hays, L.S. #673, January 4, 2016.

Northeast Corner Government Lot 6, Section 23, T17N, R2W - set 5/8" x 24" rebar with plastic cap on line between Point B and the E1/4 Corner of Section 23, 1320.00 ft., plat measure, North of the E1/4 Corner of Section 23.

Ties: 9.25' SE to "X" nails in brace post
 7.30' ENE to "X" nails in corner fence post
 10.18' West to "X" nails in fence post
 1.8' North to range of West
 7.2' East to range of fence South

W1/4 Corner, Section 23, T17N, R2W - found MAG spike with washer at the surface of the asphalt, as recorded by T.A. Tremel, L.S. #455, January 3, 2014.

Ties: 42.67' SE to "X" nails in power pole
 44.97' SW to PK nail in plastic washer in corner fence post
 32.48' NNW to "X" nails in telephone guard post
 0.5' South to centerline of 197th Street E&W
 2.0' West to centerline of 310th Avenue South

E1/4 Corner, Section 23, T17N, R2W - found survey mark with washer at the surface of the asphalt as recorded by T.A. Tremel, L.S. #455, January 3, 2014.

Ties: 61.98' SW to "X" nails in gate post
 45.33' SE to "X" nails in power pole
 44.54' NE to "X" nails in power pole
 35.05' North to "X" nails in brace post
 3.4' West to range of fence North
 3.4' East to centerline of 295th Avenue South
 On centerline of 197th Street E&W

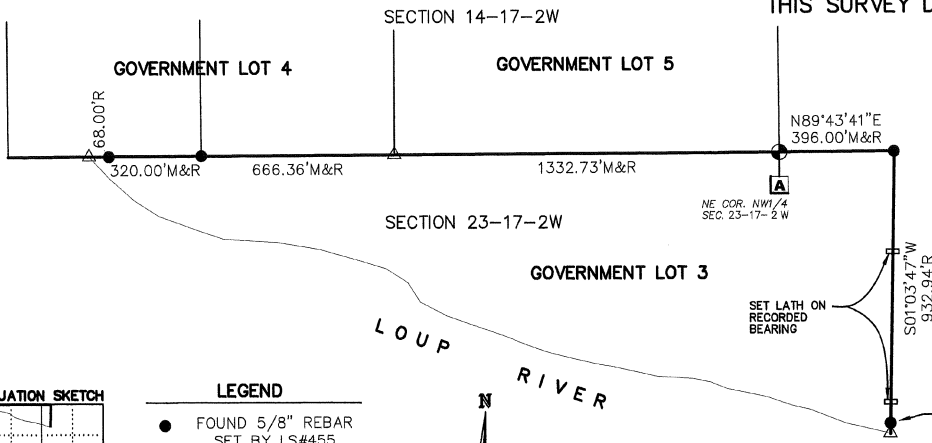
**SURVEY OF GOVERNMENT LINES
 BETWEEN GOVERNMENT LOTS 1&6
 S. 23, T17N, R2W, PLATTE CNTY, NE**

TA TREMEL	TA TREMEL	07/08/2016
DRAWN	SURVEYED	DATE

TREMEL TS SURVEYING
 INCORPORATED

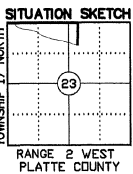
No. 1 Driftwood Drive - Columbus, NE 68601
 Phone (402) 563-4689 - Fax (402) 563-3922

THIS SURVEY DONE AT THE REQUEST OF DICK TREADWAY

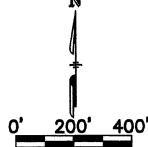


LEGAL DESCRIPTION:
THE NORTH LINE AND EAST LINE OF GOVERNMENT LOT 3, LOCATED IN SECTION 23, TOWNSHIP 17 NORTH, RANGE 2 WEST OF THE 6TH P.M., PLATTE COUNTY, NEBRASKA

SURVEY RECORD REPOSITORY
RECEIVED
NOV 18 2010
\$ 5
County Platte
993-256



- LEGEND**
- FOUND 5/8" REBAR SET BY LS#455
 - ⊙ SECTION CORNER
 - M MEASURED DISTANCE
 - R RECORDED DISTANCE



SURVEYOR'S CERTIFICATE:

I, CHRISTOPHER C. HAYS, A REGISTERED SURVEYOR OF THE STATE OF NEBRASKA, HEREBY CERTIFY THAT THIS SURVEY WAS MADE BY ME OR UNDER MY DIRECTION AUGUST 28, 2010 AND THAT SAID SURVEY IS CORRECT TO THE BEST OF MY KNOWLEDGE AND BELIEF.

STATE OF NEBRASKA) SS.
COUNTY OF PLATTE) SS.
Filed for Record on _____ day of _____
at _____ Book _____ of _____ Page _____
Fees: _____
REGISTER OF DEEDS Return to: _____

NEBRASKA REGISTERED SURVEYOR
CHRISTOPHER C. HAYS, NEBRASKA No. 673

SECTION CORNER TIES: SECTION 23, TOWNSHIP 17 NORTH, RANGE 2 WEST

- A NE COR. NW1/4
FOUND ALUM. CAP AS RECORDED IN PLATTE COUNTY SURVEY RECORDS, 0.5' ABOVE GRADE
1.5' W TO RANGE FENCE N-S
1.5' W TO CARSONITE POST
16.06' N TO "X" NAILS IN FP
6.87' S TO "X" NAILS IN FP
31.00' S TO "X" NAILS IN FP



TITLE:
BOUNDARY SURVEY
REQUESTED BY DICK TREADWAY

PROJECT:
GOVERNMENT LOT 3 LOCATED IN SECTION 23-17-2W, PLATTE CO., NE

160 NORTH POLK STREET, P.O. BOX 432, OSCEOLA, NE 68651 (402) 747-2126

DATE: 9/9/10
REVISIONS:
SHEET: 1 Of 1