

OAKWOOD

LOTS 1 THROUGH 32, INCLUSIVE, BLOCK 1; LOTS 1 THROUGH 17, INCLUSIVE, BLOCK 3; LOTS 1 THROUGH 12, INCLUSIVE, BLOCK 5.
BEING A PLATTING OF PART OF THE SE 1/4 R 12 E, OF THE 6th. P. M., DOUGLAS COUNTY

U N P L A T

CURVE DATA:

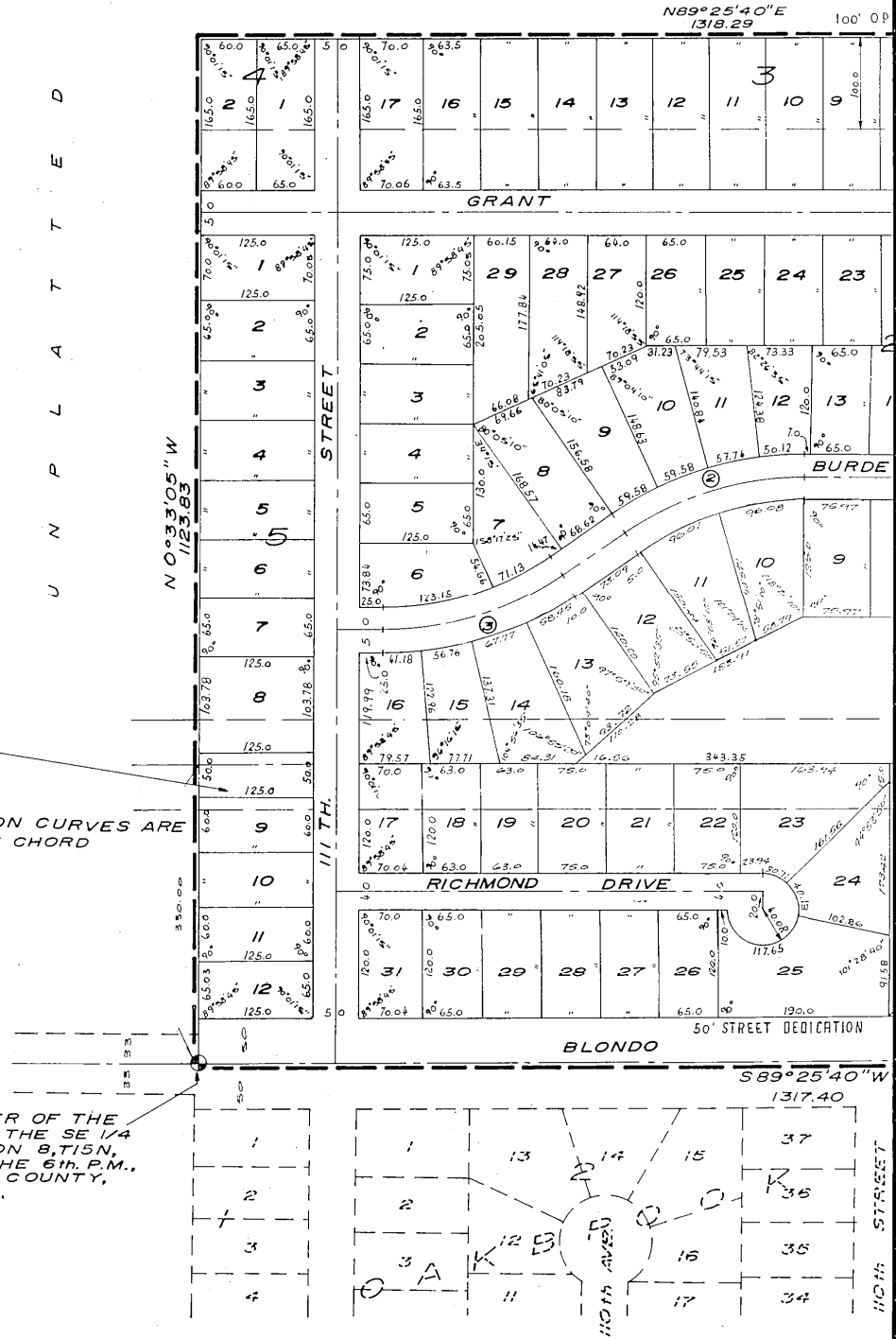
- ① Δ = 90°00'00"
D = 28.64790
T = 200.00
L = 314.16
R = 200.00
- ② Δ = 34°13'45"
D = 16.13966
T = 109.31
L = 212.08
R = 355.00
- ③ Δ = 34°15'00"
D = 16.370228
T = 107.64
L = 209.22
R = 350.00

50' DEDICATED DRAINAGEWAY

NOTE:

DISTANCES SHOWN ON CURVES ARE ARC DISTANCES NOT CHORD DISTANCES

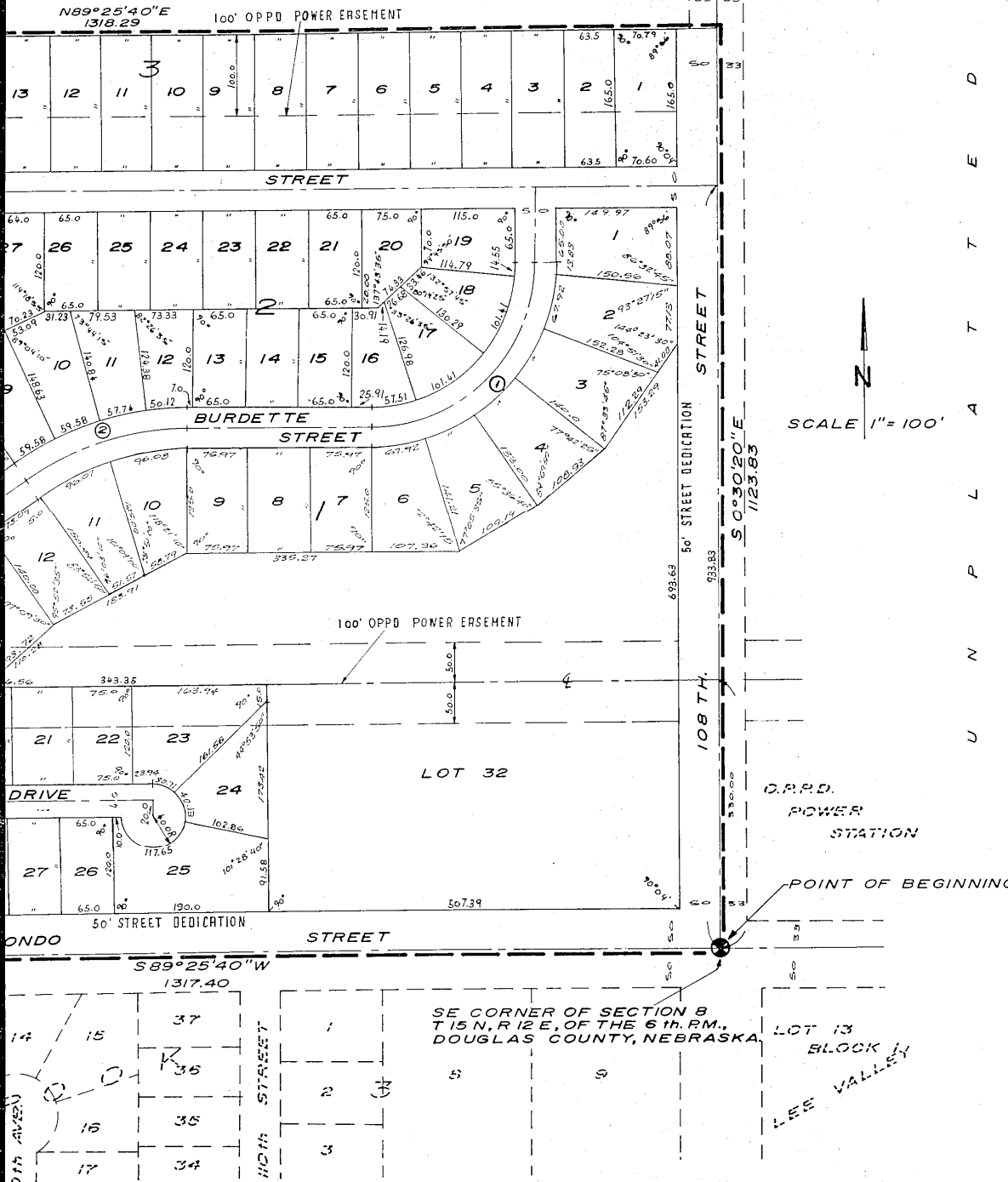
SW CORNER OF THE SE 1/4 OF THE SE 1/4 OF SECTION 8, T15N, R12E, OF THE 6th. P.M., DOUGLAS COUNTY, NEBRASKA.



KWOOD

VE, BLOCK 1; LOTS 1 THROUGH 29, INCLUSIVE, BLOCK 2;
VE, BLOCK 3; LOTS 1 AND 2, BLOCK 4; AND LOTS 1
K 5.
OF THE SE 1/4 OF THE SE 1/4 OF SECTION 8, T 15 N,
GLAS COUNTY, NEBRASKA.

L A T T E D



SCALE 1" = 100'



APPROVED
WAL. H. GREEN
DOUGLAS COUNTY
SURVEYOR

APPROVAL OF CITY ENGINEER

I HEREBY APPROVE the plat of OAKWOOD, on this 16th day of June, 1965.

[Signature]
Acting City Engineer

APPROVAL OF CITY PLANNING BOARD

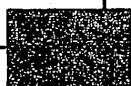
This Plat of OAKWOOD was approved by the City Planning Board of the City of Omaha, this 23rd day of June, 1965

[Signature]
Chairman, City Planning Board

APPROVAL OF OMAHA CITY COUNCIL

This Plat of OAKWOOD was approved and accepted by the City Council of Omaha on this 20th day of July, 1965

[Signature] Mayor
[Signature] President

 LAMP, RYNERSON & ASSOCIATES CONSULTING ENGINEERS - LAND SURVEYORS	SCALE AS SHOWN DRAWN BY E.J.J. DATE NOV. 1964 REVISIONS	OAKWOOD FINAL PLAT DRAWING NUMBER 62-7
	REVISIONS	

#15

RECORDED IN THE REGISTER OF DEEDS OFFICE IN BOULDER COUNTY, DENVER, COLORADO, ON 29 DAY July, 1965 AT 2:11 P M. THOMAS J. O'CONNOR, REGISTER OF DEEDS

33 25