

2015-26484

FILED IN THE PUBLIC RECORDS OFFICE OF NEBRASKA INSTRUMENT NUMBER 2015-26484

10/26/2015 5:25:25 PM  
MURRAY SAPP REPLAT 1  
MURRAY SAPP, A SUBDIVISION, AS SURVEYED, PLATTED AND RECORDED IN SAPP COUNTY, NEBRASKA

REGISTER OF DEEDS  
MURRAY SAPP, A SUBDIVISION, AS SURVEYED, PLATTED AND RECORDED IN SAPP COUNTY, NEBRASKA

REGISTER OF DEEDS  
MURRAY SAPP, A SUBDIVISION, AS SURVEYED, PLATTED AND RECORDED IN SAPP COUNTY, NEBRASKA

REGISTER OF DEEDS  
MURRAY SAPP, A SUBDIVISION, AS SURVEYED, PLATTED AND RECORDED IN SAPP COUNTY, NEBRASKA

REGISTER OF DEEDS  
MURRAY SAPP, A SUBDIVISION, AS SURVEYED, PLATTED AND RECORDED IN SAPP COUNTY, NEBRASKA

REGISTER OF DEEDS  
MURRAY SAPP, A SUBDIVISION, AS SURVEYED, PLATTED AND RECORDED IN SAPP COUNTY, NEBRASKA

REGISTER OF DEEDS  
MURRAY SAPP, A SUBDIVISION, AS SURVEYED, PLATTED AND RECORDED IN SAPP COUNTY, NEBRASKA

REGISTER OF DEEDS  
MURRAY SAPP, A SUBDIVISION, AS SURVEYED, PLATTED AND RECORDED IN SAPP COUNTY, NEBRASKA

REGISTER OF DEEDS  
MURRAY SAPP, A SUBDIVISION, AS SURVEYED, PLATTED AND RECORDED IN SAPP COUNTY, NEBRASKA

REGISTER OF DEEDS  
MURRAY SAPP, A SUBDIVISION, AS SURVEYED, PLATTED AND RECORDED IN SAPP COUNTY, NEBRASKA

REGISTER OF DEEDS  
MURRAY SAPP, A SUBDIVISION, AS SURVEYED, PLATTED AND RECORDED IN SAPP COUNTY, NEBRASKA

REGISTER OF DEEDS  
MURRAY SAPP, A SUBDIVISION, AS SURVEYED, PLATTED AND RECORDED IN SAPP COUNTY, NEBRASKA

REGISTER OF DEEDS  
MURRAY SAPP, A SUBDIVISION, AS SURVEYED, PLATTED AND RECORDED IN SAPP COUNTY, NEBRASKA

REGISTER OF DEEDS  
MURRAY SAPP, A SUBDIVISION, AS SURVEYED, PLATTED AND RECORDED IN SAPP COUNTY, NEBRASKA

REGISTER OF DEEDS  
MURRAY SAPP, A SUBDIVISION, AS SURVEYED, PLATTED AND RECORDED IN SAPP COUNTY, NEBRASKA

REGISTER OF DEEDS  
MURRAY SAPP, A SUBDIVISION, AS SURVEYED, PLATTED AND RECORDED IN SAPP COUNTY, NEBRASKA

REGISTER OF DEEDS  
MURRAY SAPP, A SUBDIVISION, AS SURVEYED, PLATTED AND RECORDED IN SAPP COUNTY, NEBRASKA

REGISTER OF DEEDS  
MURRAY SAPP, A SUBDIVISION, AS SURVEYED, PLATTED AND RECORDED IN SAPP COUNTY, NEBRASKA

REGISTER OF DEEDS  
MURRAY SAPP, A SUBDIVISION, AS SURVEYED, PLATTED AND RECORDED IN SAPP COUNTY, NEBRASKA

REGISTER OF DEEDS  
MURRAY SAPP, A SUBDIVISION, AS SURVEYED, PLATTED AND RECORDED IN SAPP COUNTY, NEBRASKA

REGISTER OF DEEDS  
MURRAY SAPP, A SUBDIVISION, AS SURVEYED, PLATTED AND RECORDED IN SAPP COUNTY, NEBRASKA

REGISTER OF DEEDS  
MURRAY SAPP, A SUBDIVISION, AS SURVEYED, PLATTED AND RECORDED IN SAPP COUNTY, NEBRASKA

REGISTER OF DEEDS  
MURRAY SAPP, A SUBDIVISION, AS SURVEYED, PLATTED AND RECORDED IN SAPP COUNTY, NEBRASKA

REGISTER OF DEEDS  
MURRAY SAPP, A SUBDIVISION, AS SURVEYED, PLATTED AND RECORDED IN SAPP COUNTY, NEBRASKA

REGISTER OF DEEDS  
MURRAY SAPP, A SUBDIVISION, AS SURVEYED, PLATTED AND RECORDED IN SAPP COUNTY, NEBRASKA

REGISTER OF DEEDS  
MURRAY SAPP, A SUBDIVISION, AS SURVEYED, PLATTED AND RECORDED IN SAPP COUNTY, NEBRASKA

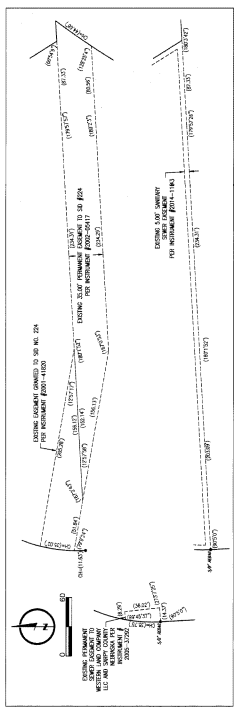
REGISTER OF DEEDS  
MURRAY SAPP, A SUBDIVISION, AS SURVEYED, PLATTED AND RECORDED IN SAPP COUNTY, NEBRASKA

REGISTER OF DEEDS  
MURRAY SAPP, A SUBDIVISION, AS SURVEYED, PLATTED AND RECORDED IN SAPP COUNTY, NEBRASKA

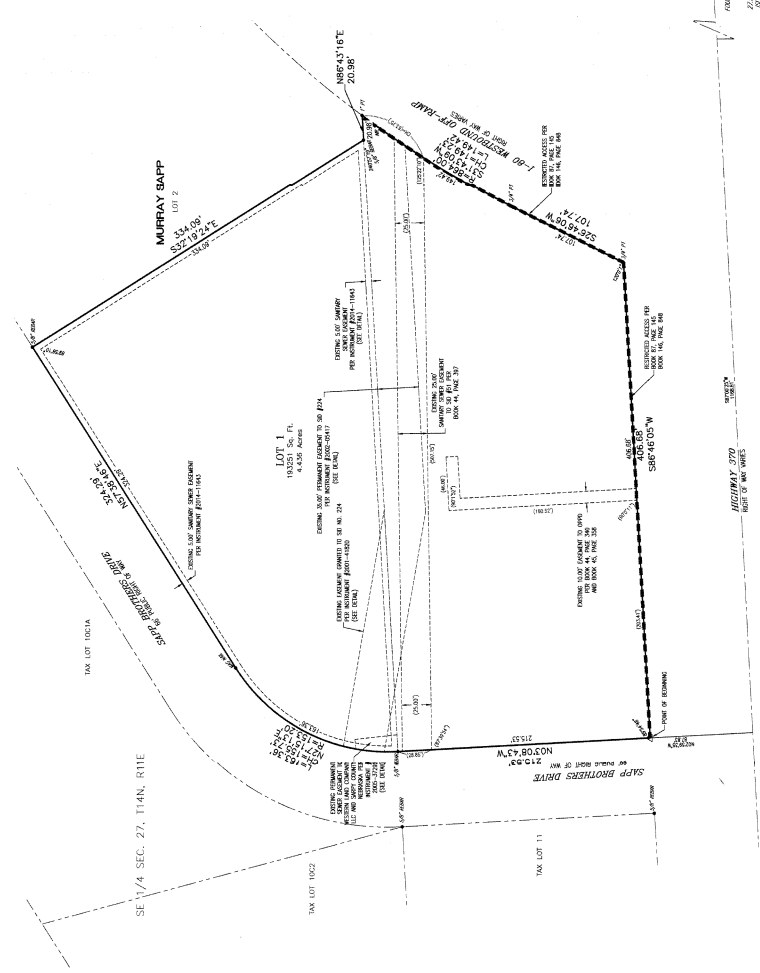
REGISTER OF DEEDS  
MURRAY SAPP, A SUBDIVISION, AS SURVEYED, PLATTED AND RECORDED IN SAPP COUNTY, NEBRASKA

MURRAY SAPP REPLAT 1

LOT 1, MURRAY SAPP REPLAT 1, BEING A PLATTING OF LOTS 6 & 14 OF THE SOUTHEAST QUARTER OF SECTION 27, TOWNSHIP 14 NORTH, RANGE 11 EAST OF THE 6TH P.M. MERIDIAN, NEBRASKA, TOGETHER WITH LOT 1, MURRAY SAPP, A SUBDIVISION, AS SURVEYED, PLATTED AND RECORDED IN SAPP COUNTY, NEBRASKA



EASEMENT DETAILS

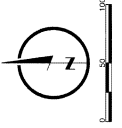


SECTION 22-BHS HIGHWAY SERVICE BUSINESS DISTRICT

Table with 2 columns: Description, Value. Includes items like 'BHS SAPP COUNTY ZONING SETBACK REQUIREMENTS'.

SECTION 32-HC HIGHWAY CORRIDOR OVERLAY DISTRICT

BHS SAPP COUNTY ZONING SETBACK REQUIREMENTS



LEGEND

- List of symbols and their meanings: PT - FINCH TOP PIPE, CONCRETE FOUNDATION, etc.

NOTES

- 1. ALL DISTANCES ARE SHOWN IN DECIMAL FEET.
2. ALL DISTANCES SHOWN ALONG CURVES ARE ARC DISTANCES NOT CHORD DISTANCES.
3. ALL ANGLES ARE 90° UNLESS OTHERWISE NOTED.
4. ALL LOT LINES ON CURVED STRETS ARE EQUAL.
5. REFERENCE AND ANGLES SHOWN IN PARENTHESES REFER TO EASEMENTS.
6. LOT 1 WILL HAVE NO DIRECT MEASURED ACCESS TO INTERSTATE 80 OR HIGHWAY 370.
7. ALL EXISTING EASEMENTS ARE NOT REFERRED TO UNLESS SHOWN AND SHOWN FOR REFERENCE ONLY.
8. ALL DISTANCES AND ANGLES SHOWN FOR REFERENCE ONLY.

DEDICATION

KNOW ALL PERSONS OF THESE PRESENTS THAT MURRAY SAPP REPLAT 1, BEING A PLATTING OF LOTS 6 & 14 OF THE SOUTHEAST QUARTER OF SECTION 27, TOWNSHIP 14 NORTH, RANGE 11 EAST OF THE 6TH P.M. MERIDIAN, NEBRASKA, TOGETHER WITH LOT 1, MURRAY SAPP, A SUBDIVISION, AS SURVEYED, PLATTED AND RECORDED IN SAPP COUNTY, NEBRASKA, IS HEREBY DEDICATED TO THE PUBLIC AS A HIGHWAY.

WILLIAM E. KENNY, S.S. 15-536

DATE 8-23-2015

WILLIAM E. KENNY, S.S. 15-536

WILLIAM E. KENNY, S.S. 15-536

WILLIAM E. KENNY, S.S. 15-536

WILLIAM E. KENNY, S.S. 15-536

WILLIAM E. KENNY, S.S. 15-536

WILLIAM E. KENNY, S.S. 15-536

WILLIAM E. KENNY, S.S. 15-536

WILLIAM E. KENNY, S.S. 15-536

WILLIAM E. KENNY, S.S. 15-536

WILLIAM E. KENNY, S.S. 15-536

WILLIAM E. KENNY, S.S. 15-536

WILLIAM E. KENNY, S.S. 15-536

WILLIAM E. KENNY, S.S. 15-536

WILLIAM E. KENNY, S.S. 15-536

WILLIAM E. KENNY, S.S. 15-536

WILLIAM E. KENNY, S.S. 15-536

WILLIAM E. KENNY, S.S. 15-536

WILLIAM E. KENNY, S.S. 15-536

WILLIAM E. KENNY, S.S. 15-536

WILLIAM E. KENNY, S.S. 15-536

WILLIAM E. KENNY, S.S. 15-536

WILLIAM E. KENNY, S.S. 15-536

WILLIAM E. KENNY, S.S. 15-536

WILLIAM E. KENNY, S.S. 15-536

WILLIAM E. KENNY, S.S. 15-536

WILLIAM E. KENNY, S.S. 15-536

WILLIAM E. KENNY, S.S. 15-536

WILLIAM E. KENNY, S.S. 15-536