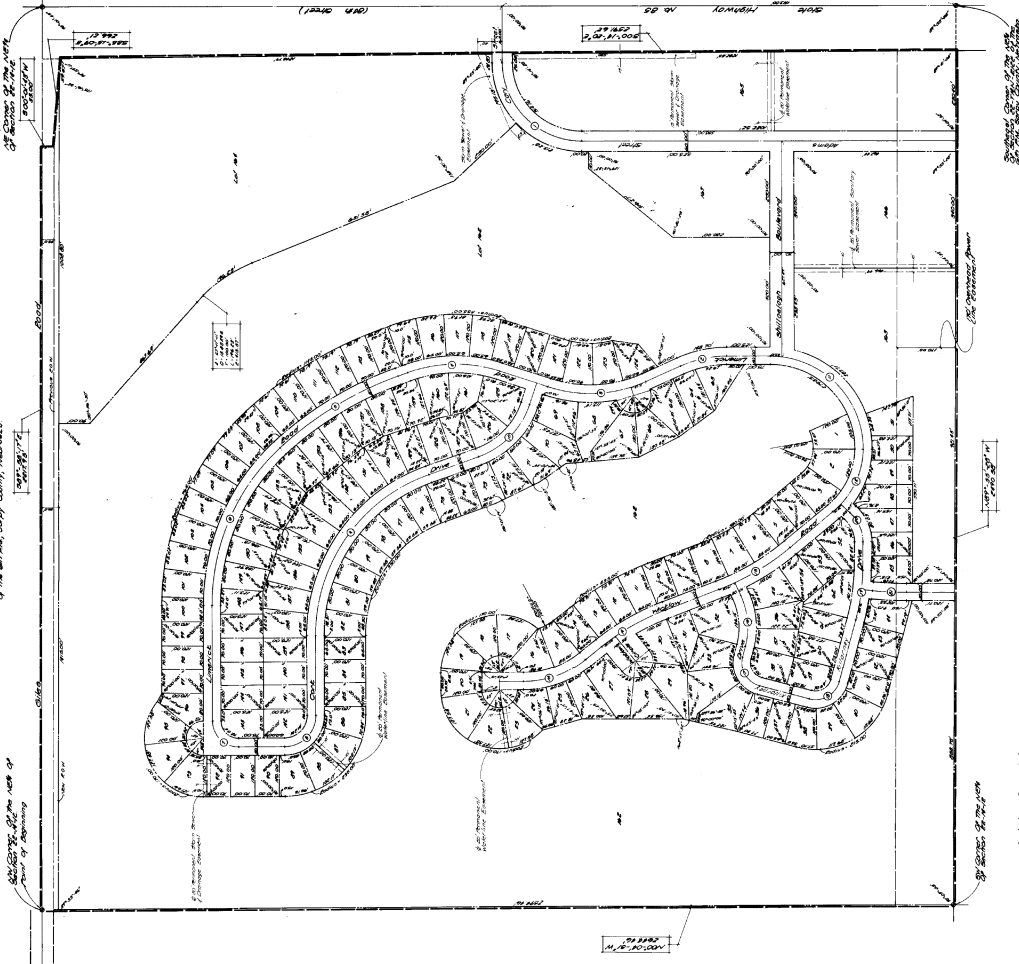


TARA HILLS •

1979 / 1987 / 1987 / 1987
 THE BOARD OF SUPERVISORS OF THE COUNTY OF SACRAMENTO, CALIFORNIA



Lot No.	Area (sq. ft.)	Area (sq. ft.)	Area (sq. ft.)	Area (sq. ft.)	Area (sq. ft.)
1	1,234	1,234	1,234	1,234	1,234
2	1,234	1,234	1,234	1,234	1,234
3	1,234	1,234	1,234	1,234	1,234
4	1,234	1,234	1,234	1,234	1,234
5	1,234	1,234	1,234	1,234	1,234
6	1,234	1,234	1,234	1,234	1,234
7	1,234	1,234	1,234	1,234	1,234
8	1,234	1,234	1,234	1,234	1,234
9	1,234	1,234	1,234	1,234	1,234
10	1,234	1,234	1,234	1,234	1,234

Sheet 5260



GENERAL NOTES:
 1. THE PROPERTY SHOWN ON THIS MAP IS THE PROPERTY OF THE COUNTY OF SACRAMENTO, CALIFORNIA.
 2. THE PROPERTY SHOWN ON THIS MAP IS SUBJECT TO ALL APPLICABLE ZONING ORDINANCES AND REGULATIONS.
 3. THE PROPERTY SHOWN ON THIS MAP IS SUBJECT TO ALL APPLICABLE EASEMENTS AND ENCUMBRANCES.
 4. THE PROPERTY SHOWN ON THIS MAP IS SUBJECT TO ALL APPLICABLE TAXES AND FEES.
 5. THE PROPERTY SHOWN ON THIS MAP IS SUBJECT TO ALL APPLICABLE DEEDS AND INSTRUMENTS.
 6. THE PROPERTY SHOWN ON THIS MAP IS SUBJECT TO ALL APPLICABLE RECORDS AND DOCUMENTS.
 7. THE PROPERTY SHOWN ON THIS MAP IS SUBJECT TO ALL APPLICABLE LAWS AND REGULATIONS.
 8. THE PROPERTY SHOWN ON THIS MAP IS SUBJECT TO ALL APPLICABLE ORDINANCES AND RESOLUTIONS.
 9. THE PROPERTY SHOWN ON THIS MAP IS SUBJECT TO ALL APPLICABLE ORDERS AND DECISIONS.
 10. THE PROPERTY SHOWN ON THIS MAP IS SUBJECT TO ALL APPLICABLE ACTIONS AND PROCEEDINGS.

APPROVED:
 COUNTY CLERK
 COUNTY SUPERVISOR
 COUNTY ATTORNEY
 COUNTY ENGINEER
 COUNTY PLANNER
 COUNTY ASSESSOR
 COUNTY RECORDER
 COUNTY COMMISSIONER
 COUNTY JUDGE
 COUNTY SHERIFF
 COUNTY DEPUTY SHERIFF
 COUNTY CORONER
 COUNTY CLERK
 COUNTY SUPERVISOR
 COUNTY ATTORNEY
 COUNTY ENGINEER
 COUNTY PLANNER
 COUNTY ASSESSOR
 COUNTY RECORDER
 COUNTY COMMISSIONER
 COUNTY JUDGE
 COUNTY SHERIFF
 COUNTY DEPUTY SHERIFF
 COUNTY CORONER

6-15-79 4:23p 7 plates 4588

94

TR 2
 THE COUNTY OF SACRAMENTO
 COUNTY CLERK
 COUNTY SUPERVISOR
 COUNTY ATTORNEY
 COUNTY ENGINEER
 COUNTY PLANNER
 COUNTY ASSESSOR
 COUNTY RECORDER
 COUNTY COMMISSIONER
 COUNTY JUDGE
 COUNTY SHERIFF
 COUNTY DEPUTY SHERIFF
 COUNTY CORONER