



# FINAL PLAT

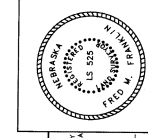
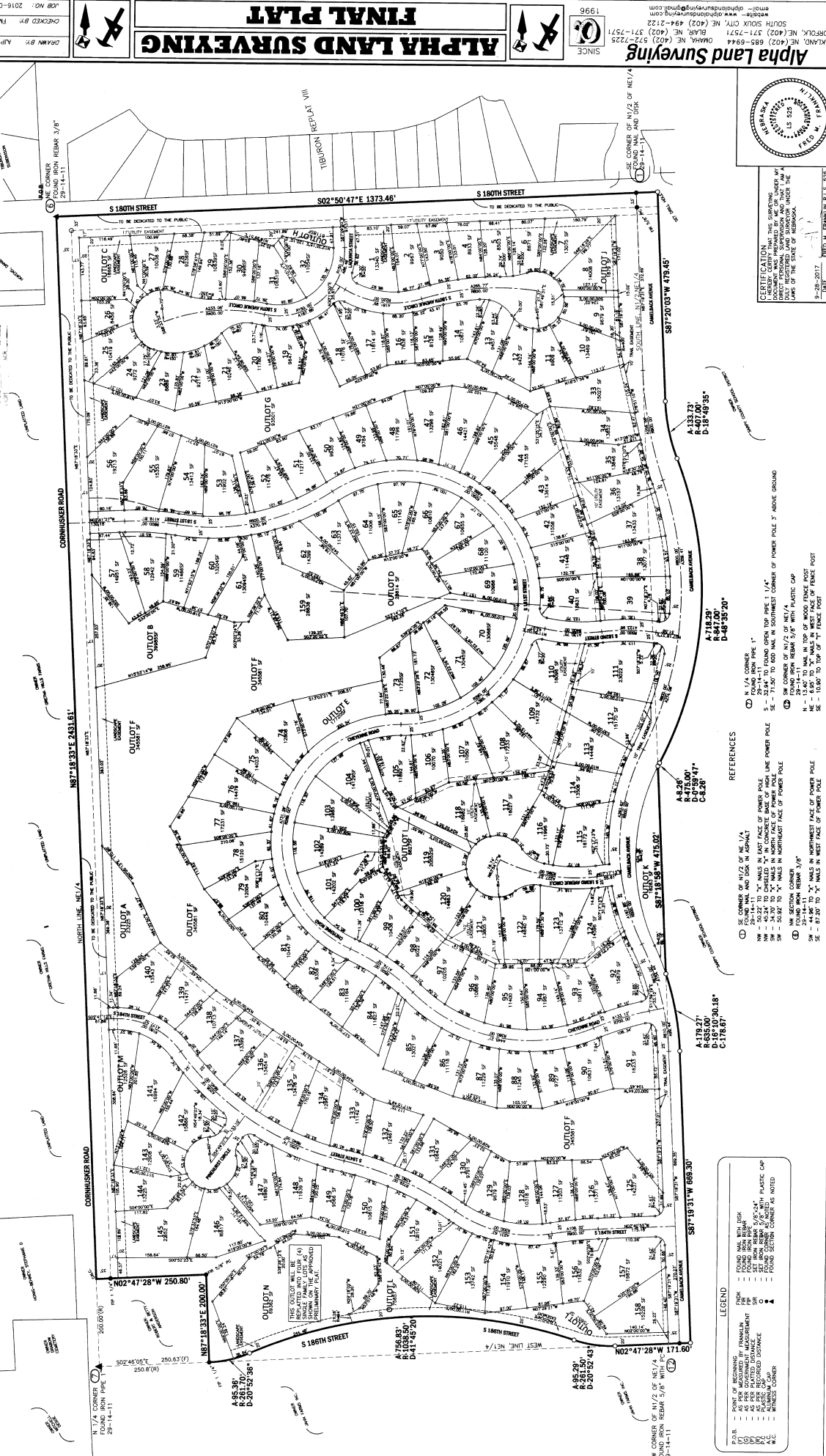
# BRIDGEPORT SUBDIVISION

**LOTS 1 THROUGH 159, INCLUSIVE AND OUTLOTS A THROUGH N, INCLUSIVE  
LOCATED IN THE NORTHEAST 1/4 OF SEC 29, T14N, R11E,  
OF THE 6TH P.M. SARPY COUNTY, NEBRASKA**

FILED IN SARPY COUNTY, NEBRASKA  
INSTRUMENT NUMBER:  
2017-24392  
10/09/2017 4:09:28 PM  
*Steph J. Deady*  
REGISTER OF DEEDS

DRAWN BY: AJP  
CHECKED BY: RMT  
DATE: 2-15-2017

Sheet 1 of 2



**Alpha Land Surveying**  
SINCE 1996  
SOUTH SIOUX CITY, NE (402) 494-2122  
BLAIR, NE (402) 571-7571  
GOMAH, NE (402) 571-2255  
NORFOLK, NE (402) 685-8944  
WWW.ALPHALANDSURVEYING.COM  
email: alpha@alphalandsurveying.com

**CERTIFICATION:** THE SURVING DOCUMENT WAS PREPARED BY ME OR UNDER MY CLOSE PERSONAL SUPERVISION AND I AM A DAILY REGISTERED LAND SURVEYOR UNDER THE LAWS OF THE STATE OF NEBRASKA.  
DATE: 2-15-2017  
BY: STEPH J. DEADY, REGISTERED LAND SURVEYOR, N.E.S. 525

- LEGEND**
- BOUNDARY
  - FOUND WALL WITH BENCH MARK
  - AS PER MEASURED BY FRANKLIN 29-14-11
  - AS PER PLATTED DISTANCE
  - SET BACK PER 68-24"
  - FOUND CORNER AS NOTED
  - FOUND CORNER AS NOTED
  - FOUND SECTION CORNER AS NOTED
  - WITNESS CORNER
- REFERENCES**
- ⊙ SE CORNER OF N1/2 OF NE1/4 29-14-11
  - ⊙ NW CORNER OF N1/2 OF NE1/4 29-14-11
  - ⊙ SW CORNER OF N1/2 OF NE1/4 29-14-11
  - ⊙ NW SECTION CORNER 29-14-11
  - ⊙ FOUND IRON BENCH 3/8"
  - ⊙ SW - 44.96 TO "X" NAILS IN NORTHWEST FACE OF POWER POLE
  - ⊙ SE - 87.80 TO "X" NAILS IN WEST FACE OF POWER POLE
  - ⊙ N 1/4 CORNER
  - ⊙ FOUND IRON PIPE 1" S - 32.84 TO FOUND OPEN TOP PIPE 1 1/4" SW - 71.50 TO 600 MAIL IN SOUTHWEST CORNER OF POWER POLE 3' ABOVE GROUND
  - ⊙ SW CORNER OF N1/2 OF NE1/4 29-14-11
  - ⊙ NW CORNER OF N1/2 OF NE1/4 29-14-11
  - ⊙ NE - 6.95 TO "X" NAILS IN WEST FACE OF FENCE POST
  - ⊙ SE - 10.90 TO TOP OF "Y" FENCE POST

2017-24392

1012

