

Lienemann's Subdivision No. 4

Being a plating of part of the Southwest 1/4 of Section 1, Township 13 North, Range 12 East of the 6th P.M. as surveyed and recorded in Sarpy County, Nebraska.

Counter 6-6
Verify FVA
D.E. SJK
Proof SA
Fee \$ 18.00
Ck Cash Chg

FILED SARPY CO. NE.
INSTRUMENT NUMBER
2001-05619
2001 NR-7 PM 3:12
Shirley J. Stuebing
REGISTER OF DEEDS

SURVEYOR'S CERTIFICATE

I, the undersigned, a duly licensed and recorded professional land surveyor in Sarpy County, Nebraska, do hereby certify that the plat and accompanying records of Lienemann's Subdivision No. 4, Lots 18, 27, 40, 52 and 53, being a plating of part of the Southwest 1/4 of Section 1, Township 13 North, Range 12 East of the 6th P.M., as surveyed and recorded in Sarpy County, Nebraska, and fully more particularly described on the plat, is correct and true to the original field notes and monuments thereon.

Parcel 1: East of the Southwest 1/4 of Section 1, Township 13 North, Range 12 East of the 6th P.M., as surveyed and recorded in Sarpy County, Nebraska, being more particularly described as follows:

Beginning at the Northwest corner of Lot 43, Lienemann's Subdivision No. 3, a surveyed plat and recorded subdivision in Sarpy County, Nebraska, being more particularly described as follows: Lot 43, bearing N 00° 00' 00" E, distance of 231.17 feet to a point on the West line of the Southwest 1/4 of Section 1, Township 13 North, Range 12 East of the 6th P.M., as surveyed and recorded in Sarpy County, Nebraska, bearing S 00° 00' 00" E, distance of 207.73 feet to a point on the West line of the Southwest 1/4 of Section 1, Township 13 North, Range 12 East of the 6th P.M., as surveyed and recorded in Sarpy County, Nebraska, bearing S 00° 00' 00" E, distance of 40.00 feet to the point of beginning, containing 145,880 square feet (3.3492 acres) more or less.

Parcel 2: Part of the Southwest 1/4 of Section 1, Township 13 North, Range 12 East of the 6th P.M., as surveyed and recorded in Sarpy County, Nebraska, being more particularly described as follows:

Beginning at the Northwest corner of Lot 43, Lienemann's Subdivision No. 3, a surveyed plat and recorded subdivision in Sarpy County, Nebraska, being more particularly described as follows: Lot 43, bearing N 00° 00' 00" E, distance of 231.17 feet to a point on the West line of the Southwest 1/4 of Section 1, Township 13 North, Range 12 East of the 6th P.M., as surveyed and recorded in Sarpy County, Nebraska, bearing S 00° 00' 00" E, distance of 207.73 feet to a point on the West line of the Southwest 1/4 of Section 1, Township 13 North, Range 12 East of the 6th P.M., as surveyed and recorded in Sarpy County, Nebraska, bearing S 00° 00' 00" E, distance of 40.00 feet to the point of beginning, containing 145,880 square feet (3.3492 acres) more or less.

Parcel 3: Part of the Southwest 1/4 of Section 1, Township 13 North, Range 12 East of the 6th P.M., as surveyed and recorded in Sarpy County, Nebraska, being more particularly described as follows:

Beginning at the Northwest corner of Lot 43, Lienemann's Subdivision No. 3, a surveyed plat and recorded subdivision in Sarpy County, Nebraska, being more particularly described as follows: Lot 43, bearing N 00° 00' 00" E, distance of 231.17 feet to a point on the West line of the Southwest 1/4 of Section 1, Township 13 North, Range 12 East of the 6th P.M., as surveyed and recorded in Sarpy County, Nebraska, bearing S 00° 00' 00" E, distance of 207.73 feet to a point on the West line of the Southwest 1/4 of Section 1, Township 13 North, Range 12 East of the 6th P.M., as surveyed and recorded in Sarpy County, Nebraska, bearing S 00° 00' 00" E, distance of 40.00 feet to the point of beginning, containing 145,880 square feet (3.3492 acres) more or less.

Parcel 4: Part of the Southwest 1/4 of Section 1, Township 13 North, Range 12 East of the 6th P.M., as surveyed and recorded in Sarpy County, Nebraska, being more particularly described as follows:

Beginning at the Northwest corner of Lot 43, Lienemann's Subdivision No. 3, a surveyed plat and recorded subdivision in Sarpy County, Nebraska, being more particularly described as follows: Lot 43, bearing N 00° 00' 00" E, distance of 231.17 feet to a point on the West line of the Southwest 1/4 of Section 1, Township 13 North, Range 12 East of the 6th P.M., as surveyed and recorded in Sarpy County, Nebraska, bearing S 00° 00' 00" E, distance of 207.73 feet to a point on the West line of the Southwest 1/4 of Section 1, Township 13 North, Range 12 East of the 6th P.M., as surveyed and recorded in Sarpy County, Nebraska, bearing S 00° 00' 00" E, distance of 40.00 feet to the point of beginning, containing 145,880 square feet (3.3492 acres) more or less.

Parcel 5: Part of the Southwest 1/4 of Section 1, Township 13 North, Range 12 East of the 6th P.M., as surveyed and recorded in Sarpy County, Nebraska, being more particularly described as follows:

Beginning at the Northwest corner of Lot 43, Lienemann's Subdivision No. 3, a surveyed plat and recorded subdivision in Sarpy County, Nebraska, being more particularly described as follows: Lot 43, bearing N 00° 00' 00" E, distance of 231.17 feet to a point on the West line of the Southwest 1/4 of Section 1, Township 13 North, Range 12 East of the 6th P.M., as surveyed and recorded in Sarpy County, Nebraska, bearing S 00° 00' 00" E, distance of 207.73 feet to a point on the West line of the Southwest 1/4 of Section 1, Township 13 North, Range 12 East of the 6th P.M., as surveyed and recorded in Sarpy County, Nebraska, bearing S 00° 00' 00" E, distance of 40.00 feet to the point of beginning, containing 145,880 square feet (3.3492 acres) more or less.

Parcel 6: Part of the Southwest 1/4 of Section 1, Township 13 North, Range 12 East of the 6th P.M., as surveyed and recorded in Sarpy County, Nebraska, being more particularly described as follows:

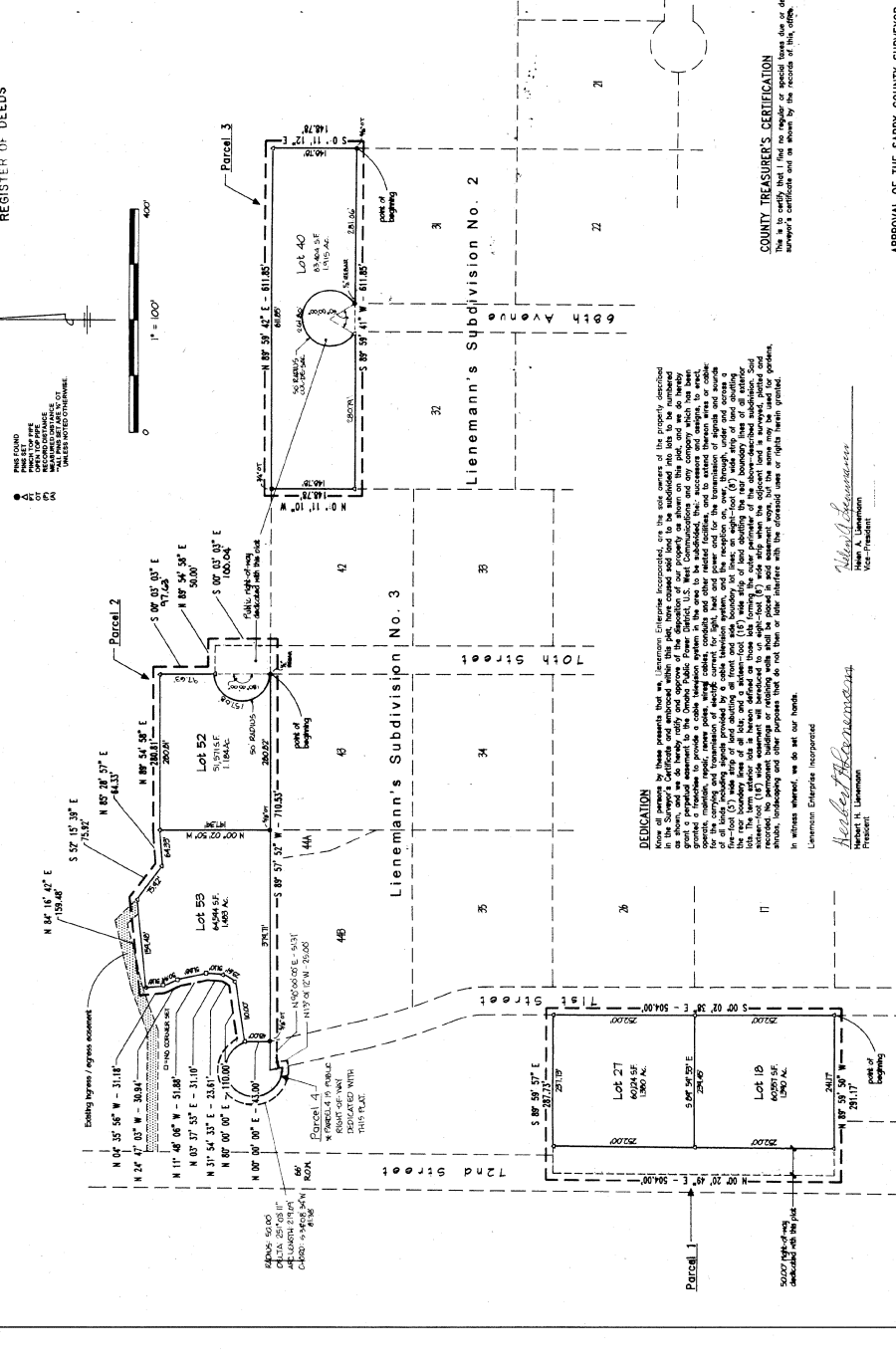
Beginning at the Northwest corner of Lot 43, Lienemann's Subdivision No. 3, a surveyed plat and recorded subdivision in Sarpy County, Nebraska, being more particularly described as follows: Lot 43, bearing N 00° 00' 00" E, distance of 231.17 feet to a point on the West line of the Southwest 1/4 of Section 1, Township 13 North, Range 12 East of the 6th P.M., as surveyed and recorded in Sarpy County, Nebraska, bearing S 00° 00' 00" E, distance of 207.73 feet to a point on the West line of the Southwest 1/4 of Section 1, Township 13 North, Range 12 East of the 6th P.M., as surveyed and recorded in Sarpy County, Nebraska, bearing S 00° 00' 00" E, distance of 40.00 feet to the point of beginning, containing 145,880 square feet (3.3492 acres) more or less.

Parcel 7: Part of the Southwest 1/4 of Section 1, Township 13 North, Range 12 East of the 6th P.M., as surveyed and recorded in Sarpy County, Nebraska, being more particularly described as follows:

Beginning at the Northwest corner of Lot 43, Lienemann's Subdivision No. 3, a surveyed plat and recorded subdivision in Sarpy County, Nebraska, being more particularly described as follows: Lot 43, bearing N 00° 00' 00" E, distance of 231.17 feet to a point on the West line of the Southwest 1/4 of Section 1, Township 13 North, Range 12 East of the 6th P.M., as surveyed and recorded in Sarpy County, Nebraska, bearing S 00° 00' 00" E, distance of 207.73 feet to a point on the West line of the Southwest 1/4 of Section 1, Township 13 North, Range 12 East of the 6th P.M., as surveyed and recorded in Sarpy County, Nebraska, bearing S 00° 00' 00" E, distance of 40.00 feet to the point of beginning, containing 145,880 square feet (3.3492 acres) more or less.

Parcel 8: Part of the Southwest 1/4 of Section 1, Township 13 North, Range 12 East of the 6th P.M., as surveyed and recorded in Sarpy County, Nebraska, being more particularly described as follows:

Beginning at the Northwest corner of Lot 43, Lienemann's Subdivision No. 3, a surveyed plat and recorded subdivision in Sarpy County, Nebraska, being more particularly described as follows: Lot 43, bearing N 00° 00' 00" E, distance of 231.17 feet to a point on the West line of the Southwest 1/4 of Section 1, Township 13 North, Range 12 East of the 6th P.M., as surveyed and recorded in Sarpy County, Nebraska, bearing S 00° 00' 00" E, distance of 207.73 feet to a point on the West line of the Southwest 1/4 of Section 1, Township 13 North, Range 12 East of the 6th P.M., as surveyed and recorded in Sarpy County, Nebraska, bearing S 00° 00' 00" E, distance of 40.00 feet to the point of beginning, containing 145,880 square feet (3.3492 acres) more or less.



DEDICATION
None of the persons by these presents... (text continues)

ACKNOWLEDGMENT OF NOTARY
STATE OF NEBRASKA
COUNTY OF SARPY
On this 13th day of February, 2001, before me, the undersigned a Notary Public, in and for said county and state, appeared the persons whose names are affixed to the dedication on this plat and acknowledged the same to be their voluntary act and deed.

WITNESS my hand and official Seal the day and year last above written.
Notary Public

APPROVAL OF THE SARPY COUNTY SURVEYOR
The plat of Lienemann's Subdivision No. 4, Lots 18, 27, 40, 52 & 53 was approved by the Sarpy County Surveyor on the 13th day of February, 2001.

APPROVAL OF THE CITY OF PAVILLION ENGINEER
The plat of Lienemann's Subdivision No. 4, Lots 18, 27, 40, 52 & 53 was approved by the City of Pavilion Engineer on the 13th day of February, 2001.

APPROVAL OF THE PAVILLION CITY COUNCIL
The plat of Lienemann's Subdivision No. 4, Lots 18, 27, 40, 52 & 53 was approved by the Pavilion City Council on the 13th day of February, 2001.

APPROVAL OF THE PAVILLION PLANNING COMMISSION
The plat of Lienemann's Subdivision No. 4, Lots 18, 27, 40, 52 & 53 was approved by the Pavilion Planning Commission on the 13th day of February, 2001.

APPROVAL OF THE CITY OF PAVILLION ENGINEER
The plat of Lienemann's Subdivision No. 4, Lots 18, 27, 40, 52 & 53 was approved by the City of Pavilion Engineer on the 13th day of February, 2001.

APPROVAL OF THE CITY OF PAVILLION ENGINEER
The plat of Lienemann's Subdivision No. 4, Lots 18, 27, 40, 52 & 53 was approved by the City of Pavilion Engineer on the 13th day of February, 2001.

APPROVAL OF THE CITY OF PAVILLION ENGINEER
The plat of Lienemann's Subdivision No. 4, Lots 18, 27, 40, 52 & 53 was approved by the City of Pavilion Engineer on the 13th day of February, 2001.

APPROVAL OF THE CITY OF PAVILLION ENGINEER
The plat of Lienemann's Subdivision No. 4, Lots 18, 27, 40, 52 & 53 was approved by the City of Pavilion Engineer on the 13th day of February, 2001.

APPROVAL OF THE CITY OF PAVILLION ENGINEER
The plat of Lienemann's Subdivision No. 4, Lots 18, 27, 40, 52 & 53 was approved by the City of Pavilion Engineer on the 13th day of February, 2001.

APPROVAL OF THE CITY OF PAVILLION ENGINEER
The plat of Lienemann's Subdivision No. 4, Lots 18, 27, 40, 52 & 53 was approved by the City of Pavilion Engineer on the 13th day of February, 2001.

APPROVAL OF THE CITY OF PAVILLION ENGINEER
The plat of Lienemann's Subdivision No. 4, Lots 18, 27, 40, 52 & 53 was approved by the City of Pavilion Engineer on the 13th day of February, 2001.

APPROVAL OF THE CITY OF PAVILLION ENGINEER
The plat of Lienemann's Subdivision No. 4, Lots 18, 27, 40, 52 & 53 was approved by the City of Pavilion Engineer on the 13th day of February, 2001.

APPROVAL OF THE CITY OF PAVILLION ENGINEER
The plat of Lienemann's Subdivision No. 4, Lots 18, 27, 40, 52 & 53 was approved by the City of Pavilion Engineer on the 13th day of February, 2001.

APPROVAL OF THE CITY OF PAVILLION ENGINEER
The plat of Lienemann's Subdivision No. 4, Lots 18, 27, 40, 52 & 53 was approved by the City of Pavilion Engineer on the 13th day of February, 2001.