

NUMERICAL INDEX, LANCASTER COUNTY
BLOCK NO. _____ CITY OF LINCOLN

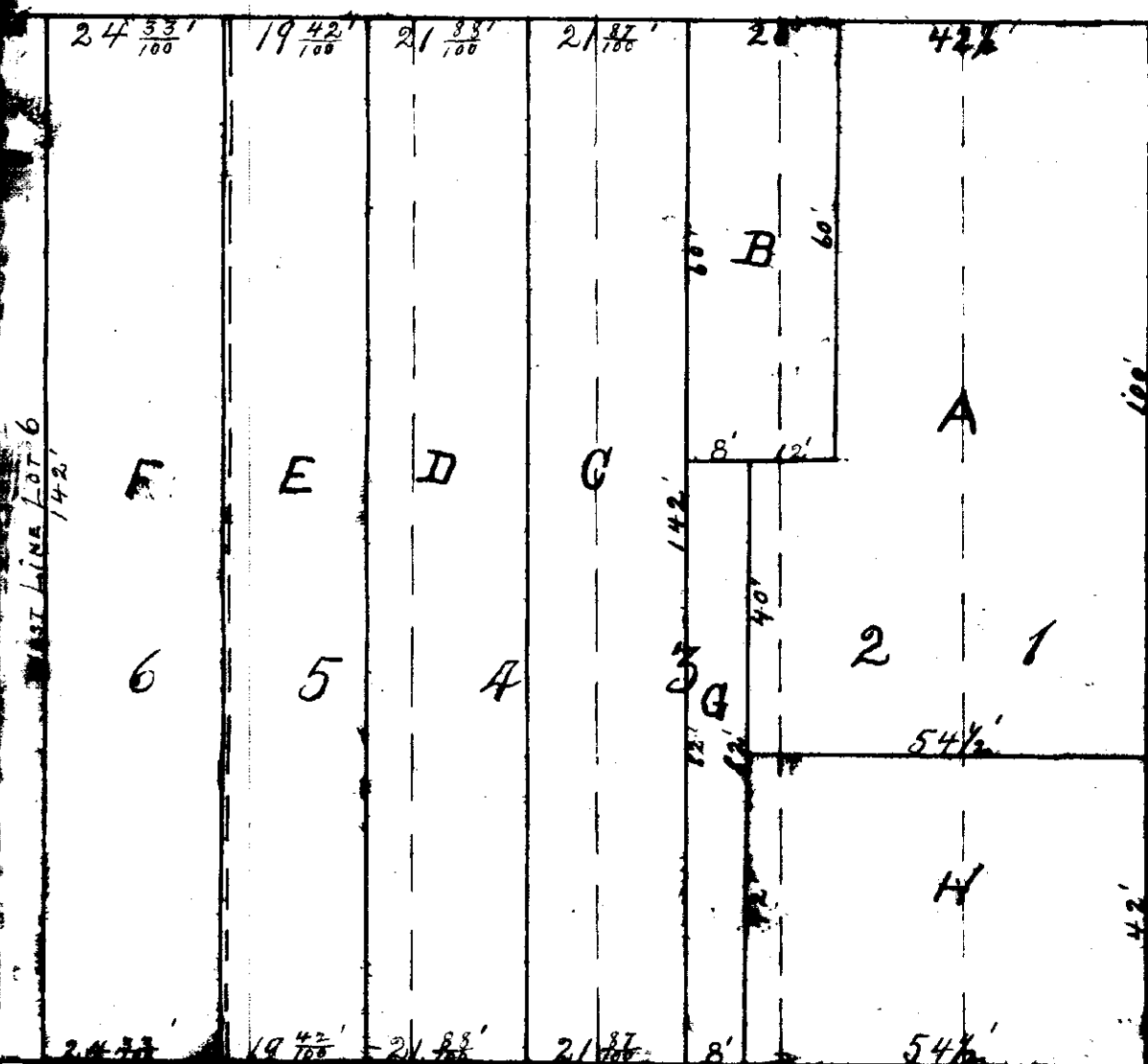
SUBDIVISION

OF
LOTS 1, 2, 3, 4, 5 & 6 BLOCK 54 LINCOLN.

Scale 1 inch = 25 feet.

22 Feb'y
at Lincoln
E. M.
County Clerk

0' STREET



LEGEND.

The annexed Plat shows the subdivision of Lots 1, 2, 3, 4, 5, and 6 Block 54 in the City of Lincoln, Lancaster County, Nebraska.

Dimensions of Lots are as marked in Red figures on the plat.

Boundaries of subdivision lots are shown by black lines.

Boundaries of old lots are shown by dotted Blue lines except where they coincide with boundaries of subdivision lots.

Blue figures show numbers of old lots.

Black letters A, B, C, etc. indicate the numbers of the subdivision lots.

BLOCK 54.

J. L. E. Cropsy, County Clerk, of Lancaster County, Nebraska, do hereby certify that the annexed plat of the subdivision of Lots 1, 2, 3, 4, 5, and 6, Block 54, Lincoln Nebraska, is executed by reason of the failure of the owners or proprietors, W. J. Cropsy, C. J. Dawson, & Aldus Cody, to do so and in accordance with the provisions of sections 113 and 114 of an act entitled "An Act to provide for the organization, government, and powers of cities and Villages". Approved March 1st, A. D. 1879.

Dated Feb'y, 22 1881.

J. L. E. Cropsy
County Clerk.

State of Nebraska. }
Lancaster County. } s. s.

On this 22 day of Feb'y, A. D. 1881, before me, a Notary Public, duly appointed, commissioned, and qualified for and residing in said county personally appeared J. L. E. Cropsy, County Clerk, who executed the above plat and acknowledged the same to be his voluntary act and deed.

[Signature]
Notary Public.