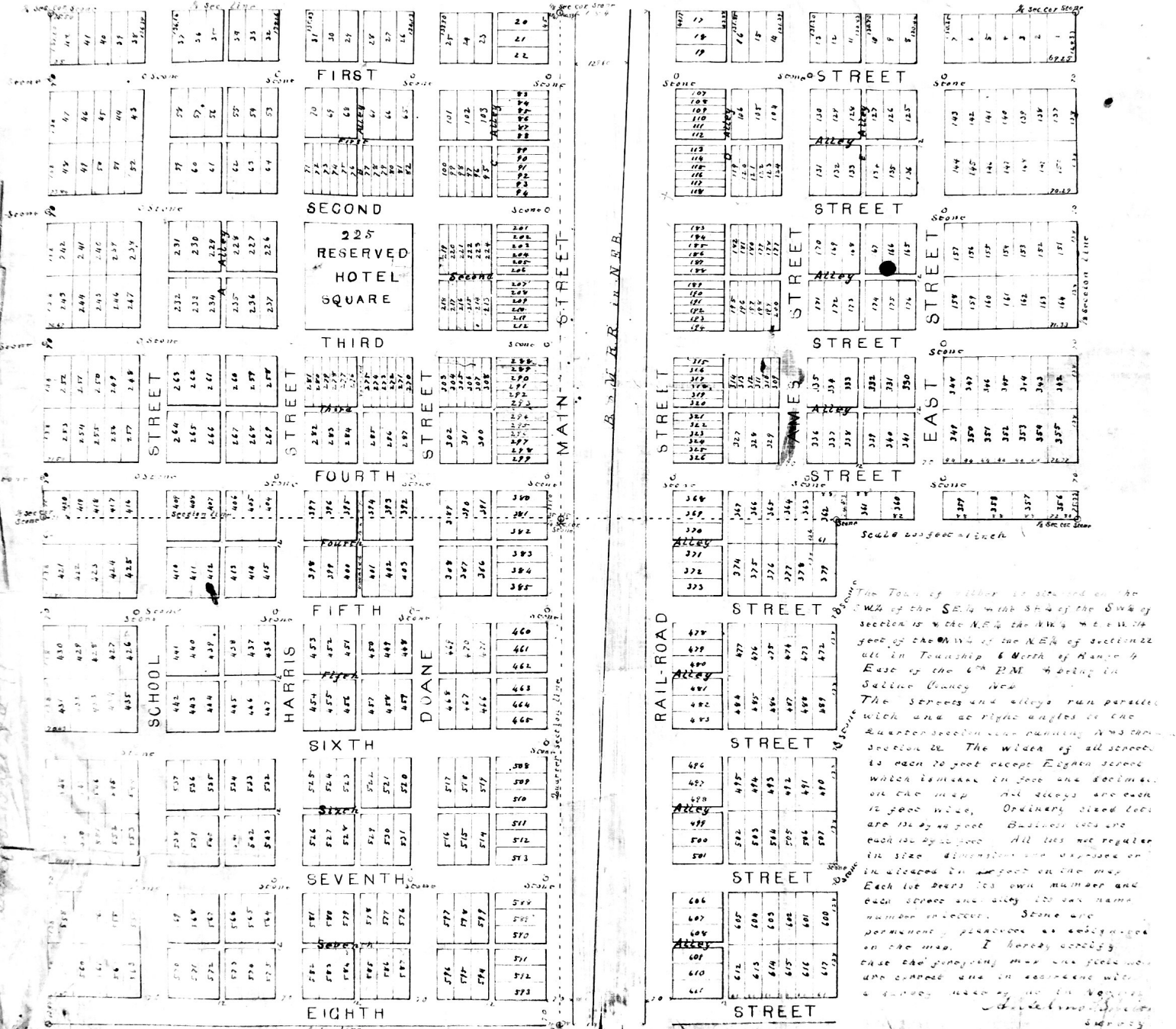


# WILBER

SALINE CO. NEB.



Surveyed and drawn by Anselm B. Smith

The Town of Wilber is situated on the NW 1/4 of the SE 1/4 of the SW 1/4 of section 15 in the NE 1/4 of the SW 1/4 of section 15 in Township 6 North of Range 4 East of the 6th P.M. Meridian in Saline County, Neb.

The streets and alleys run parallel with one another at right angles to the quarter section lines running N 45° W section 15. The width of all streets is 20 feet except Eighth street which is 24 feet in width and 20 feet in width on the map. All alleys are 12 feet wide. Ordinary sized lots are 120 by 44 feet. Business lots are 120 by 44 feet. All lots are regular in size dimensions and are shown on the plat in accordance with the map.

Each lot bears its own number and each street and alley has its name permanently placed as indicated on the map. I hereby certify that the foregoing map was prepared and is correct and in accordance with a survey made by me in accordance with the laws of Nebraska.

Anselm B. Smith

# SCHOOL

441
440
439

442
443
444

438
437
436

445
446
447

## HARRIS

453
452
451

454
455
456

450
449
448

457
458
459

## DOANE

468
470
471

468
467
466

460
461
462

463
464
465

## SIXTH

537
536
535

538
539
540

534
533
532

541
542
543

525
524
523

526
527
528

522
521
520

529
530
531

515
518
519

516
515
514

508
509
510

511
512
513

## SEVENTH

569
568
567

570
571
572

566
565
564

573
574
575

581
580
579

582
583
584

578
577
576

585
586
587

597
598
599

596
595
594

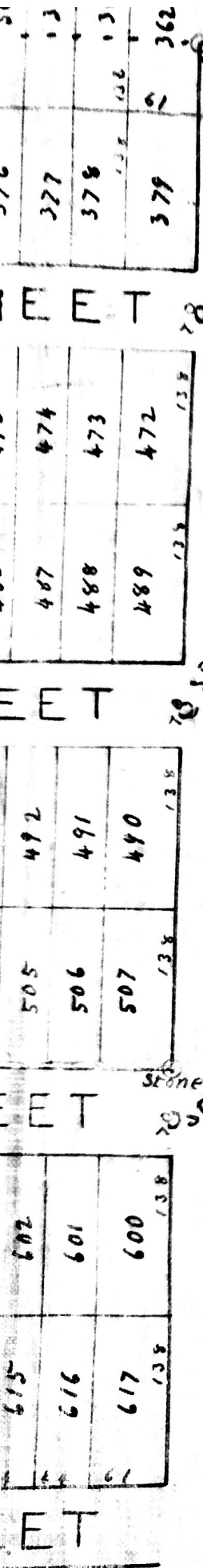
588
589
590

591
592
593

## EIGHTH

1/2 sec. line

and drawn by Anselmo B. Smith



Scale 200 feet = 1 inch

The Town of Wilber is situated on the SW<sup>1</sup>/<sub>4</sub> of the SE<sup>1</sup>/<sub>4</sub> & the SE<sup>1</sup>/<sub>4</sub> of the SW<sup>1</sup>/<sub>4</sub> of section 15 & the NE<sup>1</sup>/<sub>4</sub> the NW<sup>1</sup>/<sub>4</sub> & the W<sup>1</sup>/<sub>4</sub> of the NW<sup>1</sup>/<sub>4</sub> of the NE<sup>1</sup>/<sub>4</sub> of section 22 all in Township 6 North of Range 4 East of the 6<sup>th</sup> P.M. & being in Saline County Neb.

The streets and alleys run parallel with and at right angles to the quarter section line running N & S through section 22. The width of all streets is each 20 feet except Eighth street which is made in feet and decimals on the map. All alleys are each 12 feet wide. Ordinary sized lots are 132 by 44 feet. Business lots are each 132 by 22 feet. All lots not regular in size dimensions are expressed or indicated in feet on the map. Each lot bears its own number and each street and alley its own name, number or letter. Stone are permanently planted as designated on the map. I hereby certify that the foregoing map and field notes are correct and in accordance with a survey made by me in Nov. 1876.

*A. Belmont Smith*  
 Surveyor  
 Plattsmouth Neb.