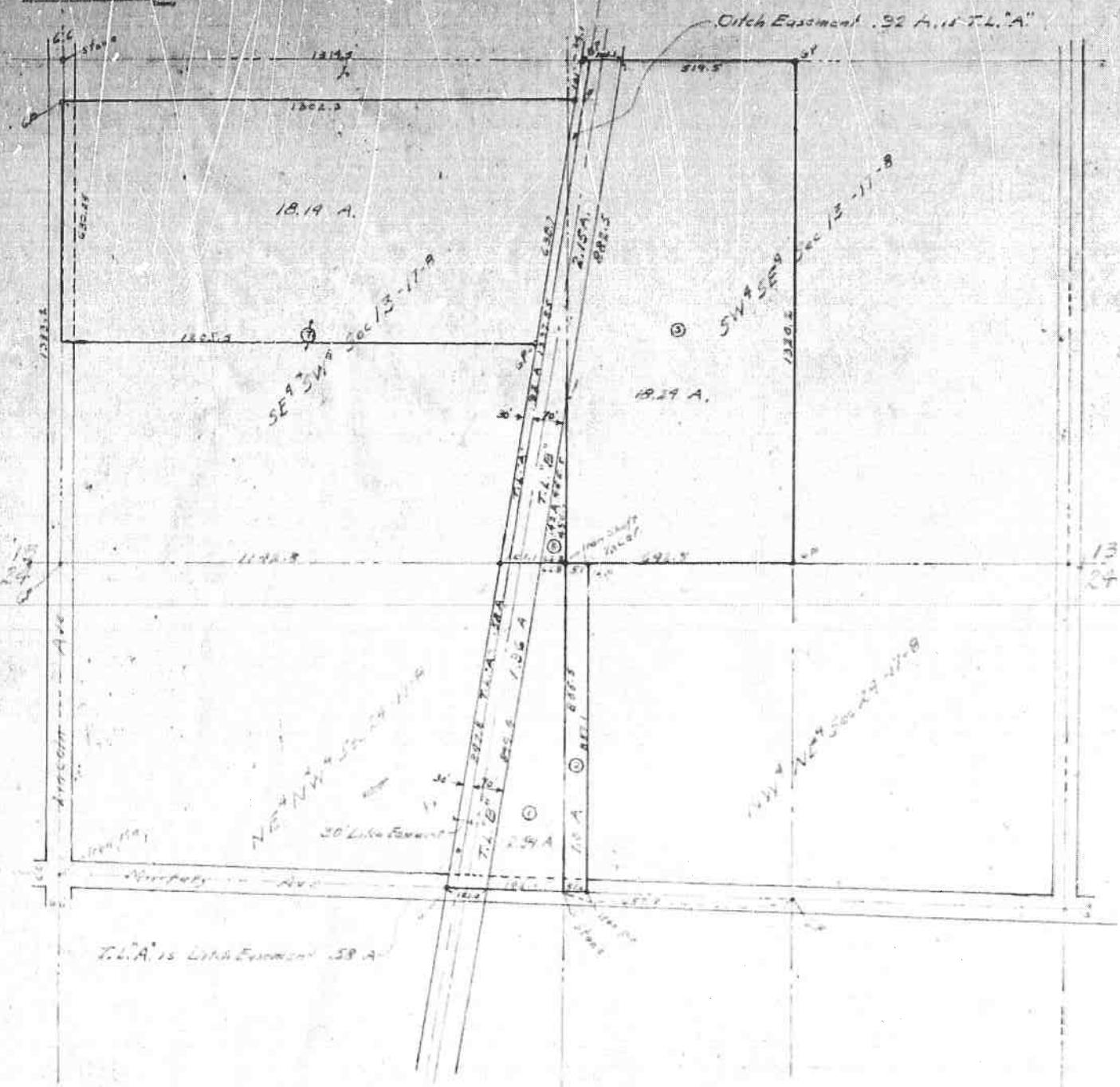


STATE OF IOWA  
 District Clerk  
 Filed for record this 5th day of May 1932  
 at 10:45 AM  
 at Des Moines, Iowa  
 Notary Public  
 Kettle A. Roush

INDEXED  
 GRANTED  
 RECORDED  
 COUNTY  
 PAGE 117

FLAT OF PARTS OF

SE<sup>1</sup> SW<sup>1</sup> SEC 13-17-8 & SW<sup>1</sup> SE<sup>1</sup> SEC 13-17-8  
 NE<sup>1</sup> NW<sup>1</sup> SEC 24-17-8 & NW<sup>1</sup> NE<sup>1</sup> SEC 24-17-8  
 Dodge, County IOWA



T.L.A. is L.I.A. Easement .58 A.

The foregoing plat was made from an actual survey and of the 10:45 AM at the County Clerk under Section 17-405 of the 1943 R.S. for November this 5th day of May 1932

L.A. Stahl Co. Clerk

The above plat was made from a survey made by me April 27, 28, 29 & 30, 1932, and is true and correct to the best of my knowledge and belief.

Notary Public  
 L.A. Stahl