



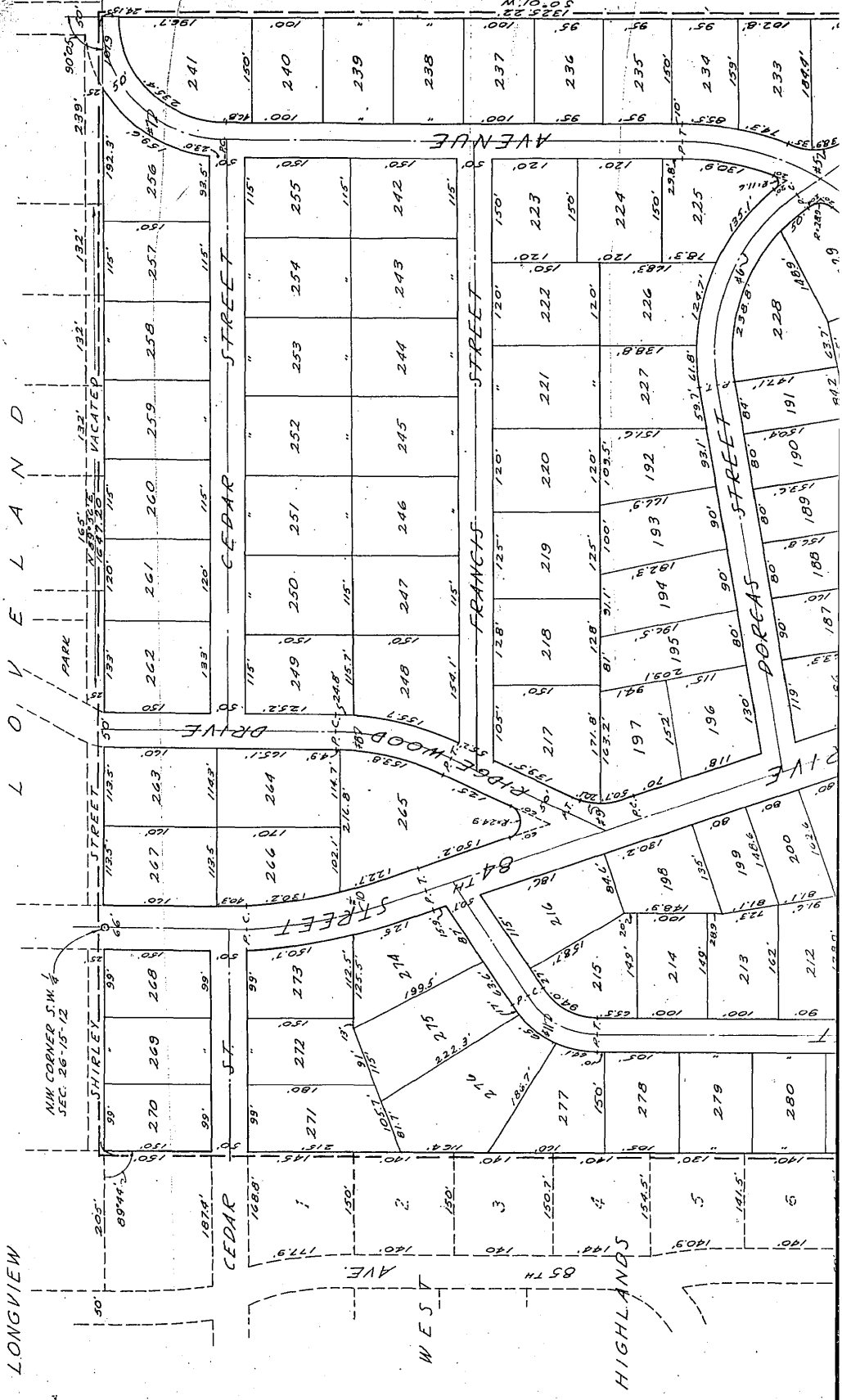
CEDAR HILLS (LOTS 83 - 291)

LOCATED IN THE SW 1/4 SECTION 26-T 15 N - R 12 E AND IN SE 1/4 Sec 27-15-12
DOUGLAS COUNTY, NEBRASKA

LONGVIEW



SCALE: 1"=100



VERGREEN CEMETARY

AVENUE

CEDAR STREET

FRANCIS STREET

PORCAS STREET

DRIVE

STREET

CEDAR

WEST AVE

HIGHLANDS

85TH

NW CORNER S.W. 1/4
SEC. 26-15-12

PARK

5060'

299'

192.3'

122'

122'

122'

122'

122'

122'

122'

122'

122'

122'

122'

122'

122'

122'

122'

241

240

239

238

237

236

235

234

233

232

231

230

229

228

227

226

225

224

241

240

239

238

237

236

235

234

233

232

231

230

229

228

227

226

225

224

241

240

239

238

237

236

235

234

233

232

231

230

229

228

227

226

225

224

241

240

239

238

237

236

235

234

233

232

231

230

229

228

227

226

225

224

241

240

239

238

237

236

235

234

233

232

231

230

229

228

227

226

225

224

241

240

239

238

237

236

235

234

233

232

231

230

229

228

227

226

225

224

241

240

239

238

237

236

235

234

233

232

231

230

229

228

227

226

225

224

241

240

239

238

237

236

235

234

233

232

231

230

229

228

227

226

225

224

241

240

239

238

237

236

235

234

233

232

231

230

229

228

227

226

225

224

241

240

239

238

237

236

235

234

233

232

231

230

229

228

227

226

225

224

241

240

239

238

237

236

235

234

233

232

231

230

229

228

227

226

225

224

241

240

239

238

237

236

235

234

233

232

231

230

229

228

227

226

225

224

241

240

239

238

237

236

235

234

233

232

231

230

229

228

227

226

225

224

241

240

239

238

237

236

235

234

233

232

231

230

229

228

227

226

225

224

241

240

239

238

237

236

235

234

233

232

231

230

229

228

227

226

225

224

241

240

239

238

237

236

235

234

233

232

231

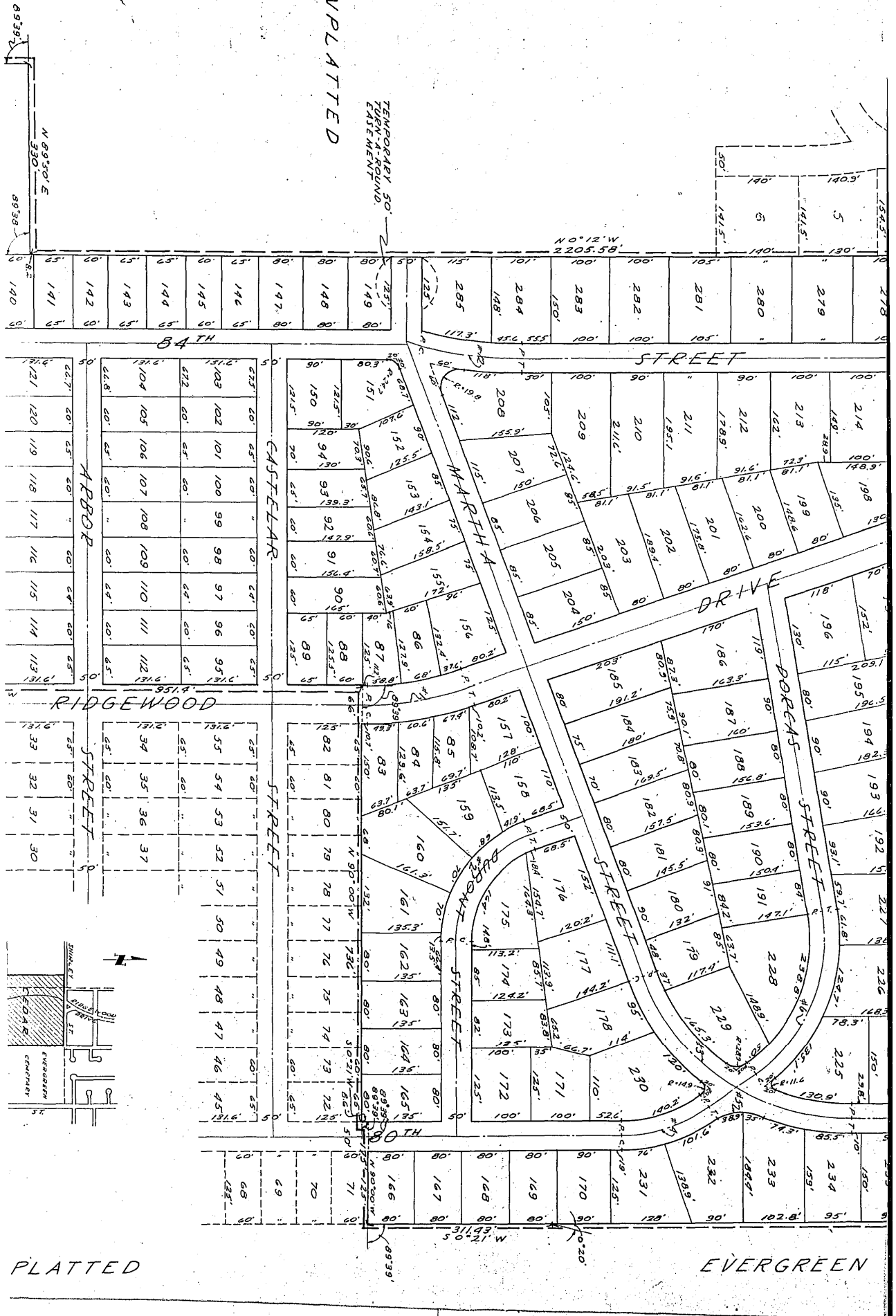
230

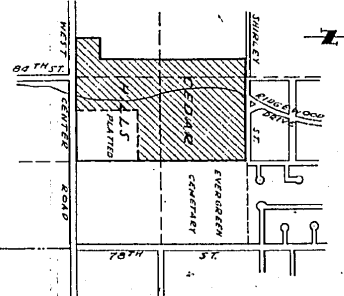
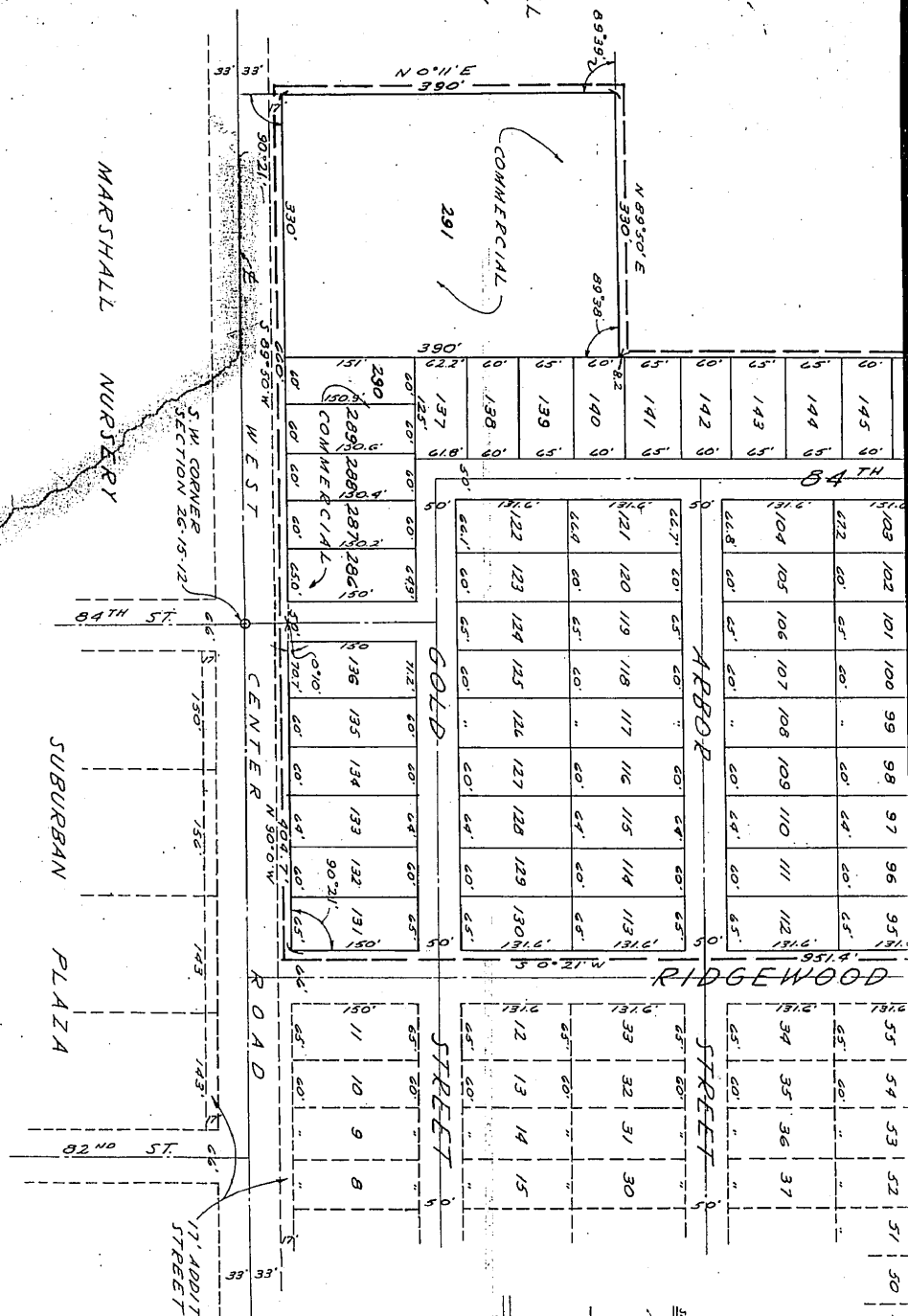
229

228

227

226





LOCATION MAP

UNPLATTED

CURVE NO.	Δ	R	T	L	D
1	30°10'	500'	88.50'	155.97'	11.46°
2	20°11'	189'	122.79'	231.54'	30.37°
3	20°10'	375'	243.40'	458.21'	16.28°
4	35°23'	230'	80.57'	155.84'	22.92°
5	67°34'	28.8'	41.0'	33.94'	83.27°
6	63°40'	284.6'	176.69'	316.24'	20.13°
7	89°35'	175'	174.23'	274.62'	32.74°
8	25°12'	385.6'	86.23'	169.77'	14.89°
9	45°06'	96.33'	40'	150.83'	59.47°
10	20°02'	756.2'	133.5'	264.4'	7.59°
11	59°49'	115'	66.13'	120'	48.82°
12	174°4'	531.45'	82.02'	170.64'	10.35°

SURVEYOR'S CERTIFICATE

I, THE UNDERSIGNED REGISTERED PROFESSIONAL ENGINEER, DO HEREBY CERTIFY THAT WE HAVE STAKED WITH IRON PIPE ALL CORNERS OF LOTS, STREETS, AVENUES, ANGLE POINTS AND ENDS OF ALL CURVES OF THIS PLAT OF CEDAR HILLS, (LOTS 83-291), AN ADDITION IN DOUGLAS COUNTY, NEBRASKA, AND THAT SAID PLAT IS A PART OF THE SW 1/4 OF SECTION 26, TOWNSHIP 15 NORTH, RANGE 12 EAST, OF THE 6TH P.M., AND PART OF THE SE 1/4 OF SECTION 27, TOWNSHIP 15 NORTH, RANGE 12 EAST, OF THE 6TH P.M., BOTH IN DOUGLAS COUNTY, NEBRASKA, MORE PARTICULARLY DESCRIBED AS FOLLOWS:

BEGINNING AT A POINT WHICH IS 50 FEET NORTH AND 404.7 FEET EAST OF THE SOUTHWEST CORNER OF SECTION 26-15-12, WHICH IS A POINT ON THE PROPOSED NORTH RIGHT-OF-WAY LINE OF WEST CENTER STREET ROAD; THENCE NORTHERLY AT AN ANGLE OF 89°39' LEFT A DISTANCE OF 951.4 FEET SAID LINE BEING THE WEST RIGHT-OF-WAY LINE OF PREVIOUSLY DEDICATED RIDGEWOOD AVENUE; THENCE EASTERLY AT AN ANGLE OF 89°39' RIGHT A DISTANCE OF 736.0 FEET; THENCE NORTHERLY AT AN ANGLE OF 89°39' LEFT A DISTANCE OF 8.6 FEET; THENCE EASTERLY AT AN ANGLE OF 89°39' RIGHT A DISTANCE OF 175.0 FEET; THENCE NORTHERLY AT AN ANGLE OF 89°39' LEFT A DISTANCE OF 388.43 FEET; THENCE NORTHERLY AT AN ANGLE OF 0°20' LEFT A DISTANCE OF 1325.22 FEET TO A POINT ON THE NORTH LINE OF THE SW 1/4 OF SAID SECTION 26; THENCE WESTERLY ALONG SAID NORTH QUARTER SECTION LINE AND EXTENDING INTO SAID SECTION 27 A DISTANCE OF 1647.20 FEET; THENCE SOUTHERLY AT AN ANGLE OF 89°44' LEFT A DISTANCE OF 2205.58 FEET; THENCE WESTERLY AND PARALLEL TO THE SOUTH LINE OF SAID SECTION 27 A DISTANCE OF 330.0 FEET; THENCE SOUTHERLY AT AN ANGLE OF 89°39' LEFT A DISTANCE OF 390.0 FEET TO A POINT ON THE PROPOSED NORTH RIGHT-OF-WAY LINE OF WEST CENTER STREET ROAD; THENCE EASTERLY ALONG SAID RIGHT-OF-WAY LINE A DISTANCE OF 660.0 FEET TO THE SOUTHEAST CORNER OF SAID SECTION 27, THENCE CONTINUING ALONG SAID NORTH RIGHT-OF-WAY LINE WHICH IS AT AN ANGLE OF 0°10' RIGHT A DISTANCE OF 404.7 FEET TO THE POINT OF BEGINNING.

B. H. BACKLUND AND ASSOCIATES, INC.
B.H. Backlund
REGISTERED PROFESSIONAL ENGINEER

DATE: *Nov. 1, '56*

DEDICATION

KNOW ALL MEN BY THESE PRESENTS: THAT WE, DANIEL CONSTRUCTION CO. AND LUMBERMAN'S TRANSIT SERVICE, INC., BEING SOLE OWNERS AND PROPRIETORS OF THE LAND DESCRIBED IN THE SURVEYOR'S CERTIFICATE AND EMBRACED WITHIN THIS PLAT HAVE CAUSED THE SAME TO BE SUBDIVIDED INTO LOTS, ADJOINING STREETS AND AVENUES WITH EASEMENT AT REAR AND SIDES OF LOTS FOR ELECTRIC AND TELEPHONE POLES AND LINES, SAID SUBDIVISION TO BE HEREINAFTER KNOWN AS CEDAR HILLS, (LOTS 83-291), AND WE HEREBY RATIFY AND APPROVE OF THE DISPOSITION OF OUR PROPERTY AS SHOWN ON THIS PLAT, AND WE HEREBY DEDICATE TO THE PUBLIC FOR PUBLIC USE, THE STREETS AS SHOWN HEREON, UNTIL JAN. 1, 1967 ONLY TWO VEHICULAR ENTRANCE OR CURB CUTS TO WEST CENTER ROAD SHALL BE PERMITTED TO SERVE THE TRACT OF LAND PLATTED AS LOTS 286 TO 291 BOTH INCLUSIVE.

III. WITNESS WHEREOF WE DO HEREBY SET OUR HANDS ON THE 31 DAY OF *October* 1956.
LUMBERMAN'S TRANSIT SERVICE, INC. DANIEL CONSTRUCTION CO.
BY: *Wilhelmina H. Pahl* PRESIDENT BY: *J. M. Youell* PRESIDENT
Einar Viren SECRETARY *Leonard Bourke* SECRETARY

ACKNOWLEDGEMENT OF NOTARY

STATE OF NEBRASKA '56
COUNTY OF DOUGLAS

ON THIS 31 DAY OF *October* A.D. 1956, BEFORE ME, NOTARY PUBLIC, DULY COMMISSIONED IN AND FOR SAID COUNTY, PERSONALLY CAME THE ABOVE J.M. YOUELL, PRESIDENT, AND LEONARD BOURKE, SECRETARY OF SAID DANIEL CONSTRUCTION CO.; WILHELMINA H. PAHL, PRESIDENT, AND EINAR VIREN, SECRETARY OF SAID LUMBERMAN'S TRANSIT SERVICE, INC., WHO ARE PERSONALLY KNOWN TO ME TO BE THE SAME IDENTICAL PERSONS WHOSE NAMES ARE AFFIXED TO THE ABOVE DEDICATION AND THEY ACKNOWLEDGE THE SIGNING OF SAID DEDICATION TO BE THEIR VOLUNTARY ACT AND DEED, AS SUCH OFFICERS AND THE VOLUNTARY ACT AND DEED OF SAID CORPORATIONS.

WITNESS MY HAND AND SEAL AT OMAHA, NEBRASKA, IN SAID COUNTY, ON THE DATE LAST AFFORSAID:
John W. Delehant
NOTARY PUBLIC
MY COMMISSION EXPIRES THE 16 DAY OF *September* A.D. 1960.

COUNTY TREASURER'S CERTIFICATE

THIS IS TO CERTIFY THAT I FIND NO DUPLICATION OR SPECIAL TAXES OR DELINQUENT TAXES ON THE PROPERTY DESCRIBED IN THE SURVEYOR'S CERTIFICATE AND EMBRACED WITHIN THIS PLAT AS SHOWN BY THE RECORDS OF THIS OFFICE.

DATE: *Nov 1 - 1956*
Sam J. Howell
COUNTY TREASURER
W. R. ...

APPROVAL OF OMAHA CITY PLANNING COMMISSION

THIS PLAT OF CEDAR HILLS, (LOTS 83-291), WAS APPROVED BY THE CITY PLANNING COMMISSION OF THE CITY OF OMAHA, THIS 26TH DAY OF Nov. 1956.

Harold J. Gove
CHAIRMAN OF CITY PLANNING COMMISSION

APPROVAL OF CITY ENGINEER OF OMAHA

I HEREBY APPROVE THE PLAT OF CEDAR HILLS, (LOTS 83-291), THIS 2 DAY OF Nov. 1956.

B. W. Woodbridge
CITY ENGINEER

OMAHA CITY COUNCIL ACCEPTANCE

THIS PLAT OF CEDAR HILLS, (LOTS 83-291), WAS APPROVED AND ACCEPTED BY THE CITY COUNCIL OF THE CITY OF OMAHA ON THE 4TH DAY OF December 1956.

ATTEST: M. J. Johnson
CITY CLERK

John R. ...
MAYOR AND PRESIDENT OF CITY COUNCIL

GRADE ACKNOWLEDGEMENT

I HEREBY CERTIFY THAT: ALL STREETS AND AVENUES EMBRACED WITHIN THIS PLAT OF CEDAR HILLS, (LOTS 83-291), HAVE BEEN GRADED TO FULL WIDTH AND APPROVED BY THE CITY ENGINEER.

B. H. BACKLUND AND ASSOCIATES, INC.

DATE: Oct. 1, '56

B. H. Backlund
REGISTERED PROFESSIONAL ENGINEER

