

Proofread

DATE	GRANTOR	GRANTEE	KIND OF INSTRUMENT	RECORD		QUARTERS				ACRES	REMARKS
				BOOK	PAGE	N.E. QUARTER	N.W. QUARTER	S.W. QUARTER	S.E. QUARTER		
						N.E. N.W. S.W. S.E.	N.E. N.W. S.W. S.E.	N.E. N.W. S.W. S.E.	N.E. N.W. S.W. S.E.		
	Elizabeth Mc Cormick	John Koch	W.D.	41	606					9 1/4	Lat A 1
	Margaret Langdon	Sarah M. Rishel	Q.C.D.	41	638					2	
	Frank Chapp	Mary Chapp	W.D.	40	552					3 6/8	Lat B 2
	P. J. + J. H. Langdon + wife	David S. Horn	W.D.	42	245					7 1/2	Lat M 2
	Lincoln Land Co.	Ernest Jimm	W.D.	42	264					7 1/2	Lat B 3
	Bridget J. Pendergast	John Koch	W.D.	43	225					9 1/4	Di. Lat E (E ³)
	John Koch + wf.	Benj. Brunk	W.D.	43	268					9 1/4	Lat A 1
	Benj. Brunk + wf.	Wm. P. Mangold, Cashier	Mtg.	X	359						Can. 32-170
	Sarah C. Figg + hus.	Wm. P. Mangold, Cashier	Mtg.	X	374						Can. 32-170
	Mary Chapp	Gosie Bottorff	Mtg.	X	393					3 6/8	Can. on margin
	Louis Leseur, Ex.	John Koch	Q.C.D.	38	532						Lat E 1
	Estate of Mary Lonergan	Heirs of Mary Lonergan	Trans.	38	534						Lat E 1
	Francis Mc Coy + wf.	John Koch	W.D.	43	555						Lat E 1
	John H. Langdon + wf.	Arthur East	Mtg.	29	259					1 1/2	Can. on margin
	Mary Chapp + hus.	Bank of Shetna	Mtg.	X	440					3 4/5	Lat 02 Can. 29-269
	Margaret Langdon et al	Mary Gertrude Gillespie	W.D.	43	576					2	
	Patrick J. Langdon + wf.	Mary Gertrude Gillespie	W.D.	43	575					2	
	Patrick J. Langdon et al	E. J. Hughes	W.D.	43	624						Tax Lat 9
	Thomas W. Langdon	Patrick J. Langdon	W.D.	45	21					2	Lat "A" 3
	So. Omaha Cream Co.	Samuel J. Purchase	Q.C.D.	44	470						
	David S. Horn + wf.	H. J. Tangeman	W.D.	45	46						Tax Lats 7+8
	Bernard Monohan	Maggie Nelson	W.D.	45	70						
	Ernest Jimm + wf.	Adolph H. Voss	Mtg.	29	416						Can. 32-170
	James N. Jordan + wf.	Robert D. Jordan	Q.C.D.	44	583						
	Mary J. Monohan Waterman	William H. Stewart et al.	W.D.	45	143					1/4	Tax Lat "H"
	Hans Peters, Referee	A. F. Breckinridge	Ref. Deed	44	645						Tax Lat "O"
	Robert D. Jordan + wf.	A. F. Breckinridge	Q.C.D.	44	646						" " "
	Sarah M. Rishel	George Jorgan	Mtg.	29	487						Can. 32
	E. J. Hughes, + wf.	B. H. Zimmerman	W.D.	45	179						Tax Lat 9
	Walter W. Sandy + wf.	M. D. Cameron	Mtg.	29	495					3	Can. 32-562
	B. H. Zimmerman	H. J. Tangeman	W.D.	45	180						Tax Lat 9
	Benj. Brunk + wf.	William M. Hrouch	W.D.	45	194					9 1/4	Lat A 1

LOT NOS. LOT NOS. LOT NOS. LOT NOS.
 NE 1/4 NE 1/4 NE 1/4 NW 1/4 NE 1/4 SE 1/4 SW 1/4 NE 1/4 SE 1/4
 NW 1/4 NE 1/4 NW 1/4 NW 1/4 SE 1/4 NW 1/4 SE 1/4
 SW 1/4 NE 1/4 SW 1/4 NW 1/4 SW 1/4 SW 1/4 SE 1/4
 SE 1/4 NE 1/4 SE 1/4 NW 1/4 SE 1/4 SW 1/4 SE 1/4 SE 1/4

SEC. 30 TWP. 14 RNG. 10

SARPY COUNTY
 NEBRASKA 350

TIMES-Repillion, Nebraska

GRANTOR	GRANTEE	KIND OF INSTRUMENT	RECORD		QUARTERS				ACRES	REMARKS	DATE	
			BOOK	PAGE	N.E. QUARTER	N.W. QUARTER	S.W. QUARTER	S.E. QUARTER				
			N.E.	N.W.	S.W.	S.E.	N.E.	N.W.	S.W.	S.E.		
Mary Jane Miles	Catherine A. Miles	W.D.	45	266					1/2	Lot 9 & 10		
William H. Stewart & w/f	Charles S. Witters	W.D.	46	247					1/4	Lot "H"		
Margaret Monahan	Maggie Nelson	Q.C.D.	46	267								
William Monahan & w/f	Maggie Nelson	Q.C.D.	46	274								
Charles S. Witters	William S. Carroll	W.D.	46	303					1/4	Lot "H"		
Robt. A. Bishop & w/f	Alice Rodgers	W.D.	45	392						10		
Sarah M. Rischel	H. C. Rodgers	W.D.	45	427					28 3/4	Lot "a"		
H. L. Rodgers	Sarah M. Rischel	Mtg.	30	215						Can. 32-608		
Samuel G. Purchas	Emma A. Purchas	W.D.	45	433						C		
Emma A. Purchas & H.	Whom it may concern	Off.	46	443								
Emma A. Purchas & H.	Marcus Moberg	W.D.	46	444						Lot "C"		
Patrick J. Langdon et al	Harry Selman Hearknt	W.D.	45	453						Lot "M", "C"		
William E. Carroll	Charles S. Witters	W.D.	46	481						Lot "H"		
P. J. Langdon et al	James W. Parks	W.D.	45	468						Lot "M", "C"		
James W. Parks & w/f	Charles Knoll	W.D.	45	485						Lot "M", "C"		
Matilda J. Lindquist	William M. Ferrell	W.D.	46	577						M 2		
William M. Ferrell & w/f	Occidental Bldg. & Loan Assn.	Mtg.	30	331						Can 32-12		
Warren M. Horn & w/f	Matilda J. Lindquist	Q.C.D.	46	587								
Fred B. Dierks & w/f	John Martens	W.D.	46	610						Part Lot F		
John A. Martens	Fred B. Dierks & w/f	Lease	46	610						" "		
William R. Patrick, Ref.	Ernest A. Ruff	Deed	46	681								
William M. Ferrel	Martha S. Ferrel	W.D.	45	624								
Henry J. Jangeman & w/f	E. J. Hughes	W.D.	45	637						Lot 8 & 9		
Martha S. Ferrel & H.	E. J. Hughes	W.D.	48	22						M 2		
E. J. Hughes & w/f	Heinrich Brausch	W.D.	48	31						M 3		
Henry J. Jangeman & w/f	Sievert Holling et al.	W.D.	48	47						Lot 7		
John Koch & w/f	Mary Koch	W.D.	48	86								
Patrick J. Langdon et al.	J. M. Fox	W.D.	47	316								
James M. Fox	Occidental Bldg. & Loan Assn.	Mtg.	32	144						Can. 32-153		
Harry Selman Hearknt	Nels Ekberg	W.D.	48	138								
James Fox	O. F. Mangold Cashier	Mtg.	31	103						Acct. 35-374 acct. 35-375 Ref. 35-377		
Walter W. Sandy & w/f	Hans Holling	W.D.	48	208					7 1/100			

LOT NOS. **Proof Recd** LOT NOS. **Received Original** LOT NOS. **Copy Book** LOT NOS.

NE 1/4 NE 1/4 _____ NE 1/4 NW 1/4 _____ NE 1/4 SW 1/4 _____ NE 1/4 SE 1/4 _____
 NW 1/4 NE 1/4 _____ NW 1/4 NW 1/4 _____ NW 1/4 SW 1/4 _____ NW 1/4 SE 1/4 _____
 SW 1/4 NE 1/4 _____ SW 1/4 NW 1/4 _____ SW 1/4 SW 1/4 _____ SW 1/4 SE 1/4 _____
 SE 1/4 NE 1/4 _____ SE 1/4 NW 1/4 _____ SE 1/4 SW 1/4 _____ SE 1/4 SE 1/4 _____

SEC. **36** WP. **111** RNG. **10**

SARPY COUNTY
NEBRASKA **351**

TILES - Pavilion, Nebraska

DATE	GRANTOR	GRANTEE	KIND OF INSTRUMENT	RECORD		N.E. QUARTER	N.W. QUARTER	S.W. QUARTER	S.E. QUARTER	ACRES	REMARKS
				BOOK	PAGE						
	Chas Krell	Mary Truman Yeacht	Rel	11	141						
	William E Carroll	Charles S Whitwer	WD	42	1109						Tax lot H
	Charles S Whitwer	Whom it may concern	apl	4	130						" "
	Charles S Whitwer + wif	Patrick J Langdon	WD	41	051						" Med canon managin.
	W & Gaarhant vs	James M Fox	Gen	C	69						Tax lot H
	Frank Bellmann + wif	Charles S Whitwer	QCD	47	421						" "
	Farmers & Merchants Bank	Augusta Ehlers, et al	Rel	32	389						" "
	Patrick & Hughes, et al	Joseph Schmitt	WD	47	476						Pt " "
	Ernest A Ruff	Geo. Ruff	WD	48	349					40	
	Farmers + Merchants Bank	Benjamin Baierke et al	Rel	32	416					9 1/4	Tax lot A:
	John V Wallace	Anna M Dunning	WD	48	397					2 1/2	" " A
	Wm P Mangold, Cashier	Sara C Fugg + ho	Rel	32	503					19 1/2	" " Pt + D
	Walter W Sandy, wif	Bank of Electra	Mtg	32	543					3	Car 34 80
	M D Cameron	Walter W Sandy + wif	Rel	32	562					3	
	John P Fleck + wif	Fred Hartman	Mtg	7	541						Tax lot G +
	James B Rishel, adm	W & Rodgers	Rel	32	608					2 5/8	" " 2
	Harvey L Rodgers	John P Fleck et al	WD	47	537					2 1/2	" " "
	Alice Rodgers	John P Fleck et al	WD	47	538					2	Tax lot 10
	John P Fleck + wif	John Severin	Mtg	7	595					3 1/2	Car 31-530
	P. D. McCormick adm	Eva McCormick	Rel	2	171					3 1/2	Car lot 2+10
	Mary Chapp	Theresa L Spethmann	WD	47	548					3 1/2	Tax lot B2
	Theresa L Spethmann	Mary Chapp	Mtg	31	233					3 1/2	Tax lot B2 Car 37-8
	Henry Huff, adm	John Huff	adm	47	639						" " M2
	Ernest M Dunning	E J La Bode	WD	48	560					2 1/2	" " Q2
	E J La Bode + wif	Patrick J Langdon	WD	48	561					2 1/2	" " "
	George Fergan	Sarah M Rishel	Rel	32	644						" " 2
	Patrick J Langdon et al	Christman A Peterson	WD	48	599					2	" " 5+48
	Henrich Braesch + wif	Walter F Davis	WD	48	667						" " M2
	Helan Hughes et al	Joseph Schmitt	QCD	49	35						w of ceasped
	Bank of Electra	Walter W Sandy	Rel	34	80					3	Pt of T 2 1/2

LOT NOS. Deed Recd LOT NOS. Re-Copy, Original or Duplicate LOT NOS. SEC 36 TWP 14 RNG 10

NE 1/4 NE 1/4 _____ NE 1/4 NW 1/4 _____ NE 1/4 SW 1/4 _____ NE 1/4 SE 1/4 _____

NW 1/4 NE 1/4 _____ NW 1/4 NW 1/4 _____ NW 1/4 SW 1/4 _____ NW 1/4 SE 1/4 _____

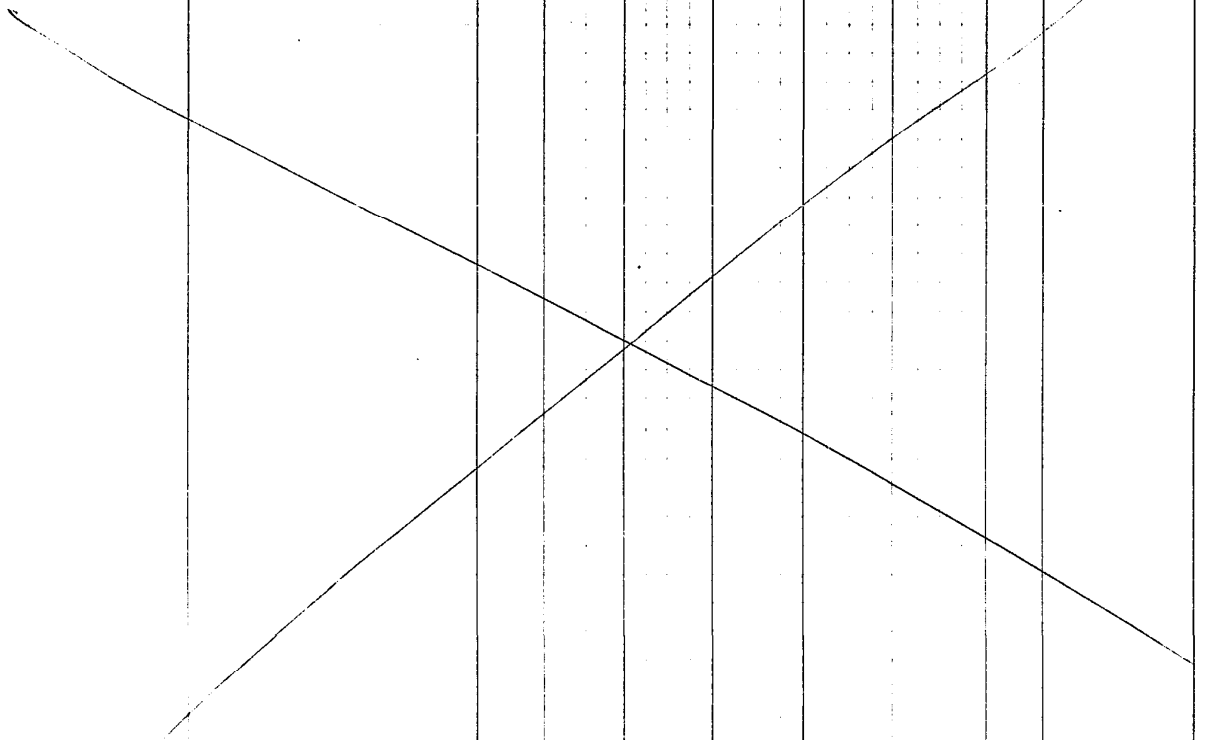
SW 1/4 NE 1/4 _____ SW 1/4 NW 1/4 _____ SW 1/4 SW 1/4 _____ SW 1/4 SE 1/4 _____

SE 1/4 NE 1/4 _____ SE 1/4 NW 1/4 _____ SE 1/4 SW 1/4 _____ SE 1/4 SE 1/4 _____

SARPY COUNTY
NEBRASKA 352

TIMES=Partition, Nebraska

GRANTOR	GRANTEE	KIND OF INSTRUMENT	RECORD		N.E. QUARTER		N.W. QUARTER		S.W. QUARTER		S.E. QUARTER		ACRES	REMARKS	DATE
			BOOK	PAGE	N.E.N.W.S.W.E.E.	N.E.N.W.S.W.E.E.	N.E.N.W.S.W.E.E.	N.E.N.W.S.W.E.E.							
Walter W Sandy	Albert C Neacock	WD	50	34							4				
Albert C Neacock	Walter W Sandy	WD	31	302							3			Can 37339	
Christian A Peterson + wf	Willage of Gnetra	WD	49	263										Can 37340	
Mary Koch + hus	William Sniekatter	WD	50	230											
John Ruff	CH Connor	WD	50	369										Can lot 1772	
Walter F Davis	CH Connor	WD	50	370										E 2nd lot 1772	
CH Connor + wf	Walter F Davis	WD	50	371										W 2nd " 1772	
CH Connor + wf	Martin J Connor	WD	50	372										E 2nd " 1772+1772	
John H Langdon + wf	Eugene Kendeibien	WD	50	374											
Patrick J Langdon	Elijah L H Langdon	WD	50	445										Tax lot	
John H Langdon et al	Jerry S Miles	WD	50	477										7-28-30-40	
Thomas V Langdon + wf	Hans Wilhelm Hansen	WD	50	478											
Christian Mowling	Marcus Mowling	WD	50	500										connected to 27-74	
Carl E Hughes + hus	James V Heffley	WD	50	581										Tax lot B 4	
J H Langdon	The Public	Patte	49	549											
In Matter of Estate of	Jessie Helling	decree		289											
Wesbke Helling	Hans Helling	WD	52	8										2nd 1/2	
Everest Zimm	Katherine R McEvay	WD	52	37										Tax lot B 3	
A F Mangold	Farmers + Merchants Bk	Asgt	35	375										Connected 8-30-71	
A F Mangold	Farmers + Merchants Bk	Asgt	35	376										Connected 8-30-71	
Farmers + Merchant Bk	A F Mangold	Rel	35	377										Connected 8-30-71	
M Fox	Whom it may concern	aff		395											
Sarah C Figg	Estate of	Dece	5	419										Tax lot 1 + 6	
ET Hughes + wf	Cora E Hughes	WD	51	277										Tax lot 8 + 9	
Ben Ruff + Anna Ruff	Henry Rinken	mlg	36	54										Canon Margin	
Fred Hartmann	John P Fleck + wf	Release	35	549										Tax lot A	
John P Fleck + wf	John Severus	mlg	36	55										Can 37339	



LOT NOS.

LOT NOS.

LOT NOS.

LOT NOS.

SEC. 36 TWP. 14 R. 10

NE 1/4 NE 1/4 _____
 NW 1/4 NE 1/4 _____
 SW 1/4 NE 1/4 _____
 SE 1/4 NE 1/4 _____

NE 1/4 NW 1/4 _____
 NW 1/4 NW 1/4 _____
 SW 1/4 NW 1/4 _____
 SE 1/4 NW 1/4 _____

NE 1/4 SW 1/4 _____
 NW 1/4 SW 1/4 _____
 SW 1/4 SW 1/4 _____
 SE 1/4 SW 1/4 _____

NE 1/4 SE 1/4 _____
 NW 1/4 SE 1/4 _____
 SW 1/4 SE 1/4 _____
 SE 1/4 SE 1/4 _____

SARPY COUNTY
 NEBRASKA 354

TIMES - Partition, Nebraska

GRANTOR	GRANTEE	KIND OF INSTRUMENT	RECORD		QUARTERS				ACRES	REMARKS	DATE
			BOOK	PAGE	N.E. QUARTER	N.W. QUARTER	S.W. QUARTER	S.E. QUARTER			
Ben Kuff + wif	Henry Runkel	Mfg	36	278						part of Jals 46 543	
Bank of Gretna	James V Heffley & wif	Rel	41	1476						of 40-372	
Mary Gertrude Gillespie	W Harold Connor	2/D	55	94						Jan 26 48	
New England Trust Co Trustee	Chicago Burlington Quincy RR	Rel	41	559						of H 351-369	
Charles E Perkins Marryll Grant	Omaha & North Platte RR Co	Rel	41	562						of H 313-391	
In matter of Estate of	Marion J Connor Decd	decret	10	1816						Pt of ml + 172	
The Omaha trust Co	St Patricks Church of Gretna	Rel	41	2016						of 38 612	
Bank of Gretna	Sven Swenson	Rel	41	632						Jan 26 R-	
John A Martins + wif	Bank of Gretna	Mfg	40	433						of 40-375	
Albert C Heacock + wif	Fargus Investment Co	1716 agmt direct	42	283						Jan 26 "7"	
John Severin, Admin	Elizabeth Severin	55	400							of 37-639	
Louis Fugg, et al	Ethel Fugg Boeke	2/D	55	570						Jan 26 74+16	
Ethel Fugg Boeke + hus	Ora E Hauschildt + hus	WD	54	531						D' + S	
Ora E Hauschildt + hus	Ethel Fugg Boeke	Mfg	36	407						D' + S	
Taylor Jerman + wif	Continental Oil Co	Lease	7	425						D' + S Can 43-648	
S F Beckenmudge + wif	C H Connor	WD	55	560						PL of 72 pp	
In matter of Appropriation of	land for Rt of way	part of Comm	8	113						Jan 26 6102	
John W Langdon	Ella M Langdon	WD	54	582						to village of Gretna	
Equitable Life Assurance Soc	Albert C Heacock + wif	Rel	42	556						of 37-639	
C H Connor + wif	Gretna Oil Co	WD	55	605						Jan 26 6102	
John W & Elizabeth Severin	Standard Oil Co	Lease	7	175						village of Gretna	
A C Heacock + wif	The State of Nebraska	2/D	56	39							
Marquet Tilden + wif	The State of Nebraska	2/D	56	44							
Hans Holling + wif	The State of Nebraska	WD	56	45							
J H Langdon + wif	The State of Nebraska	WD	56	40							
Clara Holling + hus	The State of Nebraska	2/D	56	42							

NOP

.0127
2.58
1.57

LOT NOS. LOT NOS. LOT NOS. LOT NOS.
 NE 1/4 NE 1/4 NE 1/4 NW 1/4 NE 1/4 NE 1/4 SE 1/4
 NW 1/4 NE 1/4 NW 1/4 NW 1/4 SE 1/4 NW 1/4 SE 1/4
 SW 1/4 NE 1/4 SW 1/4 SW 1/4 SE 1/4 SW 1/4 SE 1/4
 SE 1/4 NE 1/4 SE 1/4 NW 1/4 SE 1/4 SW 1/4 SE 1/4

SEC 36 TWP 14 RNG 10

Proofed

SARPY COUNTY
NEBRASKA

356

T.M.S. - Papillon, Nebraska

GRANTOR	GRANTEE	KIND OF INSTRUMENT	RECORD		QUARTERS				ACRES	REMARKS	DATE
			BOOK	PAGE	N.E. QUARTER	N.W. QUARTER	S.W. QUARTER	S.E. QUARTER			
Mission A. Peterson + w/f	John Severin	W.D.	57	384							
Clerk of Dist. Court	Whom It May Concern	Rec'd of Sheriff	46	593	2						of 36-278
Harry Mundell, Sheriff	Pearl M. Seibold	Rec'd of Sheriff	58	630	2						
Ray C. Weath	Arthur S. Weath	W.D.	58	637							
Home Oil Co.	Mid-Continent Petroleum Corp.	Lease	10	37							
Cora E. Hughes	Edward P. Weath + w/f	Rel	46	711							of 36-551
Mary Koch	Wilhelm P. Hueck	W.D.	57	506							of 40-281 T.L. E 2 + 5'
Ora E. Hauschild + hs.	Home Owners Loan Corp.	Agreement	47	506							of 40-657
Albert C. Hecock + w/f	Frank M. Hecock, et al	W.D.	59	240							
Frank M. Hecock	Edith F. Hecock	W.D.	59	258							Und. 1/2 Int.
Home Owners Loan Corp. vs Ora E. Hauschild + hs.		Lease	10	377							
D. W. Culbertson + w/f	William Hemphill et al	W.D.	59	319							Und. 1/2 Int.
Eugene Kindbeiter + w/f	Ernest Kindbeiter	W.D.	59	537							
Ernest Kindbeiter + w/f	Eugene Kindbeiter + w/f	W.D.	59	539							
H. W. Habeline, Clk. of Dist. Court	Whom It May Concern	Rec'd of Sheriff	49	356							of 40-557 B' + Q
Harry Mundell, Sheriff	Home Owners Loan Corp.	Rec'd of Sheriff	60	290							D' + Q
In Matter of Estate of	William W. Hemphill et al	Rec'd of Sheriff	11	297							1/2 Int. 0'-02"
In Matter of Estate of	Catherine B. McEvoy, Dec'd	Decree	11	305							T.L. B-3
In Matter of Estate of	Henry T. Truelson, dec'd	Decree	11	309							
Rose M. Trueson, et al	Herbert H. Truelson	W.D.	62	373							
Mary H. Gillespie	William Gerald Connor	W.D.	60	575							T.L. 4A-3
In Matter of Estate of	Budget Morrison, Dec'd	Decree	11	564							T.L. B 3
Margha V. O. A. Borde, Exec.	William Siekkoetter	Rel	50	240							of 45-344
Harry Mundell, Sheriff	Hubert A. Hughes	Rec'd of Sheriff	62	651							T.L. G 2
In Matter of Estate of	Harold A. Morrison, Dec'd	Decree	11	640							Und. 1/2 Int. T.L. B-3
Ellen Heffley	Whom It May Concern	Rel	11	643							T.L. B 3
Mary E. Morrison, Sdn.	Anthony Melia	Rec'd of Sheriff	61	61							Und. 1/2 Int. T.L. B 3
Margaret Kay, et al	Anthony F. Melia	W.D.	61	62							T.L. B 3
Anthony F. Melia + w/f	Farmers State Bank of Miami	Mtg	50	420							Can. 56-457 T.L. B 3
Margaret Sloud	Katherine Schmitt	DC	61	142							Pt. T.L. G
Mrs Pearl Hemphill	Petroleum Corp.	Lease	12	61							T.L. 0'-02"
Hubert A. Hughes	Ben H. Ehlers, et al	W.D.	62	200							of 36-54
Philip Seibold, Exec	Ben Ruff + w/f	Rel	36	54	2						
Pearl M. Seibold + hs.	Paul Stark + w/f	W.D.	62	243	2						
Paul Stark + w/f	Henry A. Scheff	Mtg	50	622	2						
Christina Cordes	John Severin	Rel	52	5							Can on margin of 42-637
In Matter of Estate of	Edna M. Sangdon, Dec'd	Decree	12	181							
In Matter of Estate of	Maggie Nelson, Dec'd	Decree	12	224							
Catherine Waterman	Charles H. Connor	Q.C.S.	61	364							
William Monohan + w/f	Charles H. Connor	Q.C.S.	61	365							

LOT NOS.

LOT NOS.

LOT NOS.

LOT NOS.

SEC. 36 TWP. 14 RING. 10

Proofread

NE 1/4 NE 1/4
NW 1/4 NE 1/4
SW 1/4 NE 1/4
SE 1/4 NE 1/4

NE 1/4 NW 1/4
NW 1/4 NW 1/4
SW 1/4 NW 1/4
SE 1/4 NW 1/4

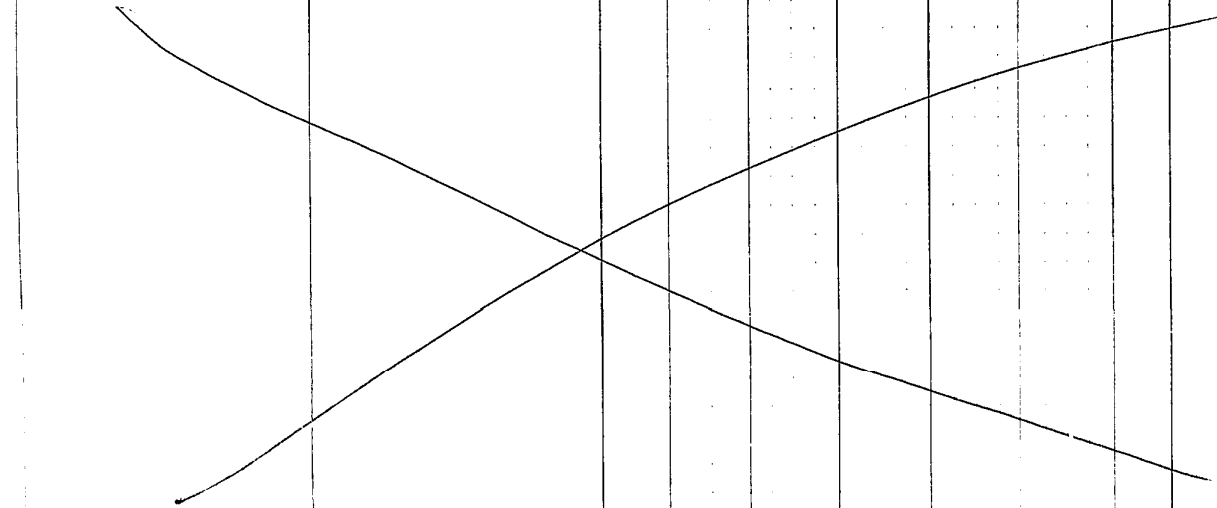
NE 1/4 SW 1/4
NW 1/4 SW 1/4
SW 1/4 SW 1/4
SE 1/4 SW 1/4

NE 1/4 SE 1/4
NW 1/4 SE 1/4
SW 1/4 SE 1/4
SE 1/4 SE 1/4

SARPY COUNTY
NEBRASKA 358

TIMES - Papillion - Nebraska

GRANTOR	GRANTEE	KIND OF INSTRUMENT	RECORD		N.E. QUARTER			N.W. QUARTER			S.W. QUARTER			S.E. QUARTER			ACRES	REMARKS	DATE
			BOOK	PAGE	N.	E.	N.W.	E.	N.	E.	N.W.	E.	N.	E.	N.W.	E.			
Maynard Smith + wf	Leonard F. Drenlich	W.S.	66	449															
Dr. Frank W. Dvorak	Fred E. Bloemer, etal	Rel.	59	275															
Gretna Motor Co.	Madeline G. Dunicko	W.S.	67	316															
Madeline G. Dunicko + Hs.	Live Stock Natl. Bank	Mtg.	59	317															
Henry A. Scheef	Paul Stark + wf	Mtg.	50	622															
Paul Stark + wf	Henry A. Scheef	Mtg.	58	703															
H. W. Hanson	Archie Potter, etal	W.S.	68	543															
Henry C. Woodring, etal	Carl Eggers + wf.	W.S.	67	512															
Carl Eggers + wf.	Hulac Inc.	Mtg.	61	272															
Henry C. Woodring, etal	Hulac Inc.	W.S.	67	514															
Frank M. Heacock, etal	Cort F. Tangeman + wf	W.S.	69	13															
Frank M. Heacock - Gdn.	Cort F. Tangeman, etal	Lease	14	359															
Cort F. Tangeman + wf.	Frank M. Heacock, etal	W.S.	68	326															
Home Owners Loan Corp.	Margaret E. Ward	Deed	67	575															
Margaret E. Ward + Hs.	Farmers + Mech. Natl. Bk.	Mtg.	61	466															
Carl Eggers, etal	Hulac Inc.	Exec. mts	14	377															
Wilhelm P. Heuck + wf.	Wilhelm P. Heuck, etal	W.S.	69	419															
Howard C. Krambeck + wf.	Grove Nelson	W.S.	69	525															
Grove Nelson + wf.	Howard C. Krambeck	W.S.	69	526															
Archie Potter + wf.	Ralph D. Zimmerman + wf	W.S.	69	594															
C. F. Tangeman, etal	Standard Oil Co.	Lease	15	108															
Ralph D. Zimmerman + wf	Warren Nelson, etal	W.S.	70	290															
Warren Nelson, etal	William D. Meyers + wf.	W.S.	70	342															
William D. Meyers + wf.	J. F. Murphy Jr.	Mtg.	64	662															
Hulac, Inc.	Carl Eggers, etal	Rel.	64	783															
Carl Eggers + wf	Donald H. Truelson + wf	W.S.	71	225															
Donald H. Truelson + wf	Herman Huff, etal	Mtg.	65	13															
Hulac Inc.	Village of Gretna	W.S.	70	385															
Hulac Inc.	Village of Gretna	Exec. mnt	15	284															
Paul Stark + wf.	Farmers + Mutual Ins. Co.	Mtg.	65	73															
Henry A. Scheef	Paul Stark, etal	Rel.	65	60															
William D. Meyers + wf.	J. F. Murphy Jr.	Mtg.	65	348															
Live Stock Natl. Bk.	Madeline G. Dunicko + Hs.	Rel.	65	398															
Pearl Hemphill	Pearl Hemphill, etal	W.S.	72	335															
Arthur L. Wleeth + wf	Arthur L. Wleeth + wf	W.S.	73	18															
Wallace Scheef	Paul Stark + wf	Lease	17	123															
Margaret E. Ward + Hs.	Margaret E. Ward + Hs.	W.S.	74	409															
Charles E. Miles + wf.	School District #37	W.S.	76	204															
Joseph Koke + wf	Adolph Schnack, etal	Agre	19	145															
Joseph Koke + wf	Adolph Schnack + wf	W.S.	78	48															
Farmers + Mech. Natl. Bk.	Margaret Ward + Hs.	Rel.	76	269															



Proposed

LOT NOS.	LOT NOS.	LOT NOS.	LOT NOS.
NE 1/4 NE 1/4	NE 1/4 NW 1/4	NE 1/4 SW 1/4	NE 1/4 SE 1/4
NW 1/4 NE 1/4	NW 1/4 NW 1/4	NW 1/4 SW 1/4	NW 1/4 SE 1/4
SW 1/4 NE 1/4	SW 1/4 NW 1/4	SW 1/4 SW 1/4	SW 1/4 SE 1/4
SE 1/4 NE 1/4	SE 1/4 NW 1/4	SE 1/4 SW 1/4	SE 1/4 SE 1/4

SEC. 36 TWP. 14 RING 10

SARPY COUNTY NEBRASKA 359

DATE	GRANTOR	GRANTEE	KIND OF INSTRUMENT	RECORD		N.E. QUARTER		N.W. QUARTER		S.W. QUARTER		S.E. QUARTER		ACRES	REMARKS
				BOOK	PAGE	N.E. N.W. S.W. S.E.	N.E. N.W. S.W. S.E.	N.E. N.W. S.W. S.E.	N.E. N.W. S.W. S.E.						
	Margaret E. Ward + hus.	Farmers + Merchants Natl. Bk.	Mortg	76	270										Rel. 88-239
	William M. Meyers + wf	Stock Yds. Natl. Bank	Mortg	78	133									8	T.L. D + Q
	J. F. Murphy, Jr.	William M. Meyers + wf	Release	78	347										Rel. 88-307
	Oliver J. Matens	In the Matter of the Estate of	Exec	80	108										of 65-348
	Hulac, Inc.	Robert V. Krenge + wf	W.S.	80	224										T.L. "F"
	Frank Hulac	Whom It May Concern	Aff	80	275										T.L.C
	Robert V. Krenge + wf	Metropolitan Life Ins. Co.	Mortg	80	61										T.L.C
	Joseph Koke + wf	Elizabeth Schneck	W.S.	81	21										Pt. T.L. P1
	E. F. Dingman + wf	Standard Oil Co.	Lease	81	143										assigned 27-381
	Elizabeth Severn	Dolan Christensen	Lease	81	449										T.L. 6A 2
	Leola Hauschild, et al	Whom It May Concern	Lease	81	14										T.L. 10
	School District # 37	Village of Getna	Ease	81	150										T.L.S P2 + 16
	Harry D. Inare + wf	Village of Getna	Ease	81	142										Pt. T.L. "H"
	Mrs. Pearl Hemphill	Village of Getna	Ease	81	137										T.L. G. 2
	Mrs. Pearl Hemphill	Village of Getna	Ease	81	179										T.L. P2
	Edward P. Weath + wf	Village of Getna	Ease	81	177										T.L. 0' + 0'
	Frank M. Neacock + wf	Frank M. Neacock + wf	W.S.	85	144										T.L. 8
	State of Nebraska	Whom It May Concern	App	85	310A										T.L. 6A + N
	State of Nebraska	Whom It May Concern	App	85	310A										misc record 22-14
	State of Nebraska	Frances S. Koke, hus.	Condemnation	85	311										T.L. P2 - 16
	State of Nebraska	Frances S. Koke + hus.	Condemnation	85	311										
	State of Nebraska	Frances S. Koke + hus.	Condemnation	85	311										
	Margaret E. Ward + hus.	Mary Marist Dubbles	Mortg	88	136										Rel. 91-181
	Farmers + Merchants Natl. Bk.	Margaret E. Ward + hus.	Rel	88	239										T.L. D1 + D2
	Stock Yds. Natl. Bank	William M. Meyers + wf	Rel	88	307										of 78-133
	William M. Meyers + wf	Stock Yds. Natl. Bank	Mortg	88	306										Rel. 185-289
	Theresa Spethman	Sarpy County	cut of award	88	374										Rel. 101-328
	Harry Schief + wf	State of Nebraska	W.S.	86	454										T.L. B 2
	Paul Stark + wf	State of Nebraska	W.S.	86	458										nop
	Farmers + Merchants Natl. Bk.	Paul Stark + wf	Rel	89	280										of 65-73
	Frank M. Neacock, et al	State of Nebraska	W.S.	86	460										
	Paul Stark + wf	Belbert Green + wf	agree-ment	87	116										
	Ruth A. Snodgrass	Belbert Green + wf	bill of sale	87	126										
	Elizabeth M. Severin	State of Nebraska	W.S.	87	147										T.L. 2A-2B-104B
	Howard C. Krambeck + wf	State of Nebraska	W.S.	87	304										
	Harry Schief + wf	School Dist. of Getna	W.S.	87	296										
	Mary Marist Dubbles	Margaret E. Ward + hus.	Rel	91	181										Tax 88-01A
	Village of Getna	Whom It May Concern	Rel	91	53										of 88-136
	Village of Getna	Whom It May Concern	Rel	91	56										School Addl
	Village of Getna	Whom It May Concern	Rel	91	56										corrected 3-3-69
	Hugo M. Schneck + wf	Margaret E. Ward + hus.	Mortg	93	49										see instrument
	Margaret E. Ward + hus.	Hugo M. Schneck + wf	W.S.	90	75										Rel. 117-205

page 133

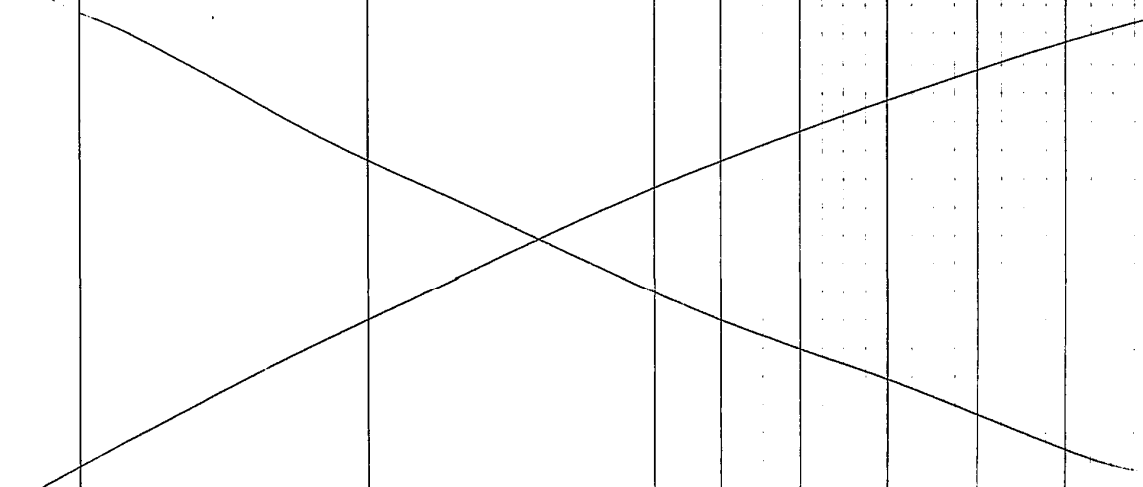
page 133

+

S-

+

S-



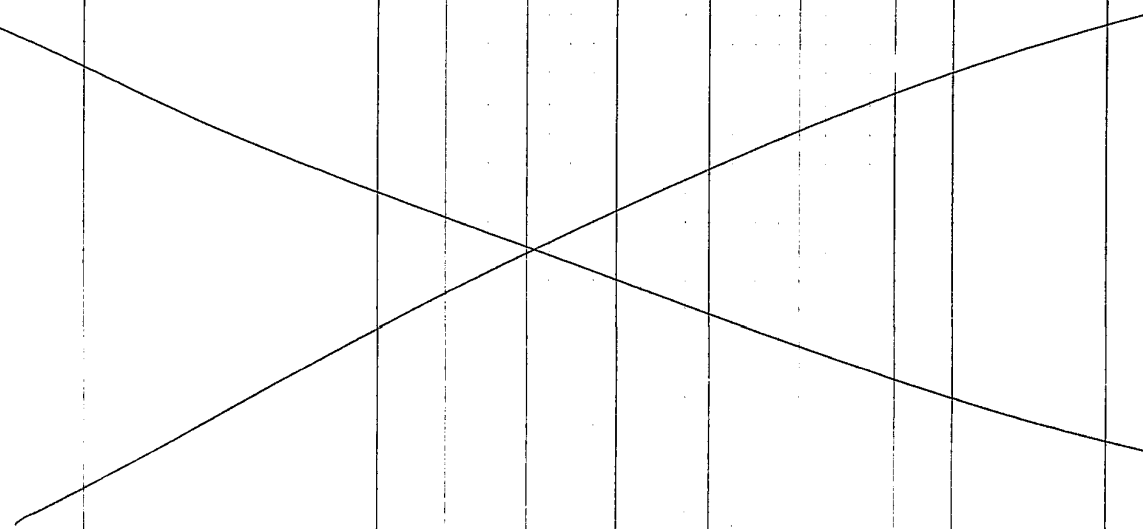
LOT NOS. _____ LOT NOS. _____ *copy of General in eye board* LOT NOS. _____
 NE 1/4 NE 1/4 _____ NW 1/4 NW 1/4 _____ NE 1/4 SW 1/4 _____ NE 1/4 SE 1/4 _____
 NW 1/4 NE 1/4 _____ NW 1/4 NW 1/4 _____ NW 1/4 SW 1/4 _____ NW 1/4 SE 1/4 _____
 SW 1/4 NE 1/4 _____ SW 1/4 NW 1/4 _____ SW 1/4 SW 1/4 _____ SW 1/4 SE 1/4 _____
 SE 1/4 NE 1/4 _____ SE 1/4 NW 1/4 _____ SE 1/4 SW 1/4 _____ SE 1/4 SE 1/4 _____

SEC. 36 TWP. 14 RNG. 10
 SARP COUNTY
 NEBRASKA 360

Proceed

TILES = Pavilion, Nebraska

GRANTOR	GRANTEE	KIND OF INSTRUMENT	RECORD		N.E. QUARTER		N.W. QUARTER		S.W. QUARTER		S.E. QUARTER		ACRES	REMARKS	DATE
			BOOK	PAGE	N.E.N.W.S.W.E.E.	N.E.N.W.S.W.E.E.	N.E.N.W.S.W.E.E.	N.E.N.W.S.W.E.E.							
Delbert M. Green	Maion Green	Rec. of Sale	24	141											
Robert Kranzer	U.S. Dept. of Agriculture	Agreement	95	458											
Harold Hamey	U.S. Dept. of Agriculture	Agreement	95	381										Rel. 136-471	
Delbert P. Fleck	Whom It May Concern	Off. note	24	248										Pl. of T.L. 48	
Elizabeth Severin	Whom It May Concern	Off. note	24	269										T.L. A1, T.L. 2A, 2B-10	
Harry W. Snare + w/f	Rebr. Masonic Home Corp.	W.S. Agreement	91	40										T.L. G-2	
Rebr. Masonic Home	Lief A. Foged + w/f	W.S.	91	106										T.L. G-2	
Paul Stark + w/f	Westgate Properties, Inc.	W.S.	91	129											
Elizabeth Severin	Westgate Sub-division, Inc.	W.S.	91	127										2A-25-10-A1	
Farmers Mutual Ins. Co.	Paul Stark + w/f	Rel.	97	6										of 65-73	
Westgate Properties, Inc.	Paul Stark + w/f	Mtg.	97	1										Rel. 115-82	
Westgate Sub-division, Inc.	Elizabeth M. Severin	Mtg.	97	140										Rel. 124-5	
S - School Addition	Whom It May Concern	Plat #2	93											T.L. 2A, 2B-4B, 10-A1	
Franklin Rogers, et al	Whom It May Concern	Plat #3	91	418										"School Addition" Computed 3-3-68 see	
Eugene V. Jacobsen + w/f	United States Natl. Bk. of Omaha	Mtg. note	97	413										"West Plains Add."	
Glenn E. Spethmann + w/f	Delbert M. Green	Plat #2	24	455										Rel. 111-575	
Hugo M. Schmack + w/f	Whom It May Concern	Plat #3	3	106										T.L. P2-16	
Westgate Sub-division, Inc.	Whom It May Concern	Plat #3	3	501										3.68 Assign. 25-324	
The Nebraska Masonic Home	Lief Foged + w/f	W.S.	93	441										Fair Haven Sub. Add.	
Theresa F. Spethman	In the Matter of Estate of Dr. Orms Production Credit	W.S. will + decree	25	228										West Plains, S. 107-149	
Lief C. Foged + w/f	Dr. Orms Production Credit	Mtg. Receipt of Cash	101	357										T.L. B2	
Robert Eby, County Treasurer	Theresa Spethman + Estate	Receipt of Cash	101	328										Rel. 118-48	
Howard C. Krimbeck + w/f	Federal Land Bank of Omaha	Mtg. note	101	483										T.L. B2 of 88-374	
Delbert M. Green	Delbert M. Green + w/f	2nd Mtg. note	25	324										Rel. 162-8	
Glenn E. Spethmann + w/f	Delbert Myron Green + w/f	W.S.	95	100										of Divic. 24-455	
Delbert Myron Green + w/f	C.E. Walshmer + et al	Mtg. note	103	445										T.L. B2	
School Dist. #37	Temple Baptist Church	W.S.	96	411										Rel. 170-495	
Robert V. Kranzer + w/f	Farmers Home Administration	Mtg. note	106	340										T.L. "K"	
School Dist. #37, Sarpy Co.	Gutna Medical Assn. Inc.	W.S.	97	300										T.L.C-Rel. 117-595	
Maurice F. Langdon + w/f	James W. Warren + w/f	W.S.	99	263										T.L. F	
School Dist. of Gutna	Gutna Medical Assn. Inc.	Rel.	99	345										T.L. A2, A3, A4	
Gutna Medical Assn. Inc.	John W. Eckberg	W.S.	99	487										T.L. J	
United States Natl. Bk. of Omaha	Eugene V. Jacobsen + w/f	Rel.	111	575										T.L. J	
Paul Stark + w/f	Westgate Properties, Inc.	Rel.	115	82										of 97-413	
Clara E. McDec + hab.	Robert R. McDec, et al	W.S.	101	35										of 97-1	
W.A. Snare	Whom It May Concern	Off. note	27	278										Individual 2 Int.	
Stark, Paul + Anna	Westgate Properties, Inc.	Plat #2	105	456										T.L. J	
Stark Paul + Anna	Westgate Properties, Inc.	Plat #2	106	504										of 97-1	10-30-59
														of 97-1	12-10-59



Propped

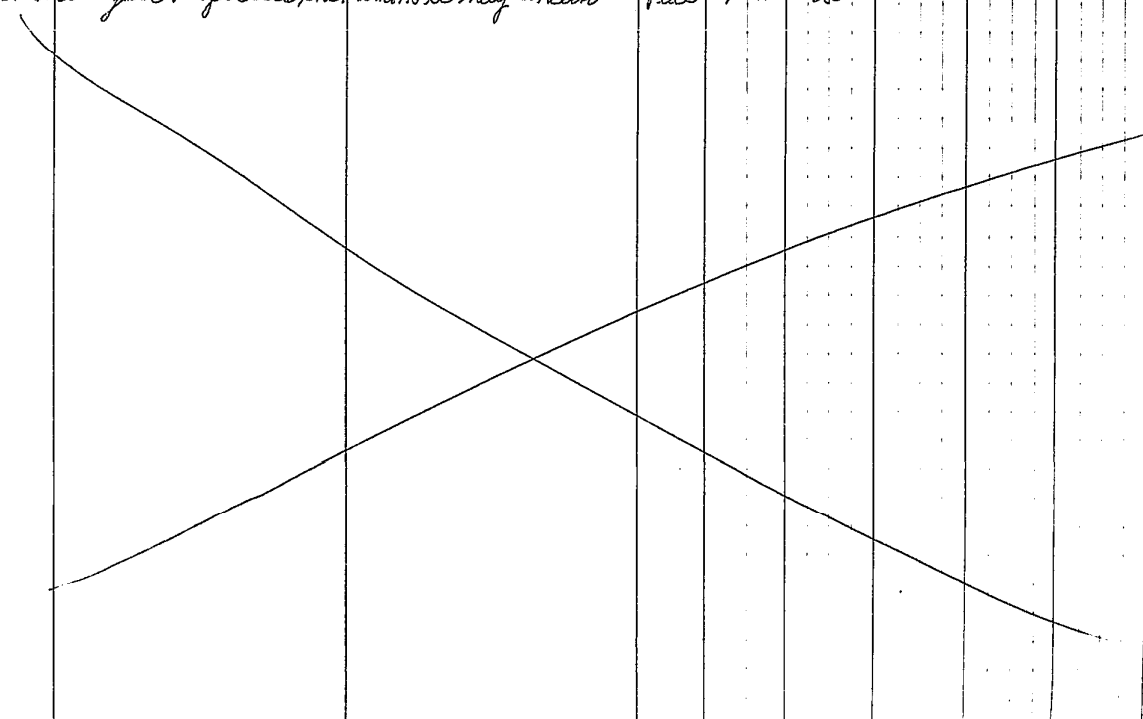
LOT NOS.		LOT NOS.		LOT NOS.		LOT NOS.	
NE1/4NE1/4	NE1/4NW1/4	NE1/4SW1/4	NE1/4SE1/4	NE1/4NE1/4	NE1/4NW1/4	NE1/4SW1/4	NE1/4SE1/4
NW1/4NE1/4	NW1/4NW1/4	NW1/4SW1/4	NW1/4SE1/4	SW1/4NE1/4	SW1/4NW1/4	SW1/4SW1/4	SW1/4SE1/4
SE1/4NE1/4	SE1/4NW1/4	SE1/4SW1/4	SE1/4SE1/4				

SEC. 36 TWP. 14 RNG. 10

SARPY COUNTY NEBRASKA 361

YIMES-Partition, Nebraska

DATE	GRANTOR	GRANTEE	KIND OF INSTRUMENT	RECORD		N.E. QUARTER		N.W. QUARTER		S.W. QUARTER		S.E. QUARTER		ACRES	REMARKS
				BOOK	PAGE	N.E.N.W.S.W.E.S.	N.E.N.W.S.W.E.S.	N.E.N.W.S.W.E.S.	N.E.N.W.S.W.E.S.						
	Robert U. Krenzer & wf.	Federal Land Bank of Omaha	Mtg	117	141										Rel. 129-158
	John Ward & wf.	Hugo Schnack & wf.	Rel	117	205										of 93-49
	Hugo M. Schnack & wf.	William H. Grimm & wf.	WSS	101	583										of 21-143
	Standard Oil Company	The American Oil Company	assign of mch	27	381										of 80-61
	Metropolitan Life Insurance	Robert U. Krenzer & wf.	Rel	117	441										T.L. 01-02-Q
	Village of Iretna	Whom It May Concern	misc	27	444										of 106-340
	Farmers Home Adm.	Robert U. Krenzer & wf.	Rel.	117	595										of 101-337
	So. Omaha Production Credit	Lief C. Fogel & wf.	Rel	149	48										T.L. DIA3, Q24-T
	Hugo Schnack & wf.	Hugo Schnack, etal	WSS	102	190										T.L. DIA3, Q22-T
	Hugo M. Schnack, etal	First Fed. Savings Loan	Mtg	18	207										T.L. DIA3, Q22-T
	Hugo Schnack, etal	First Federal Savings Loan	Mtg	118	209										T.L. DIA3, Q22-T
	Rachel Secord	Thelma Secord Collins	WSS	102	333										T.L. I
	James W. Warren & wf.	Whom It May Concern	WSS	94	483										Warren Add
	Temple Baptist Church	Marguerite A. Cunningham	WSS	3	156										T.L. A1, A3, A4
1-1-61	Westgate Subdivision, Inc.	James W. Warren & wf.	Mtg	121	434										T.L.K. Rel. 146-574
8-4-61	In Matter of Estate	Edward P. Weesh	WSS	103	688										So. 50' of T.L. A1
8-31-61	C. F. Tangman & wf.	American Oil Co.	will & devise	28	453										pt. of T.L. B1A
10-20-61	Dist. Court of Sarpy County	Westgate Properties, Inc.	Seize	28	540										T.L. 8 & T.L. 9
11-1-61	Arthur Mangold	Whom It May Concern	misc	29	1										P.T.L. 6A2
	Louis Figg & wf.	James Curley	Mtg	29	34										"West Plains"
	Rachel Secord	Whom It May Concern	WSS	105	690										
	Gerald E. Collins.	Ralph A. Burgett	WSS	106	148										
	Ralph A. Burgett	Home State Bank	Mtg	105	680										Release 144-195
	In The Matter of Estate	Thelma E. Collins	Devise	misc	112										
	Howard C. Krankeck & wf.	Elmer G. Hansen, etal	Agree	29	232										
	Frances S. Koke & wf.	Harry R. Saunders & wf.	WSS	106	392										
	Harry R. Saunders & wf.	Omaha National Bank	Mtg	126	613										
	Robert U. Krenzer & wf.	Henry Harder	Mtg	127	82										
	Federal Land Bank of Omaha	Robert U. Krenzer & wf.	Rel	127	158										
	William Harold Cornett	Ronald E. Frederick	WSS	107	6										
2-7-62	Village of Iretna	Whom It May Concern	WSS	104	319										
	Frances S. Koke & hus.	Hansen Brothers, Inc.	WSS	107	209										
	Ronald E. Frederick	Whom It May Concern	WSS	94	501										
	Elizabeth M. Severin	Westgate Sub. Inc.	Rel	129	5										
	Leonard F. Zrenlich & wf.	Wesph. of Road & Dringation, Neb	R.O.W	29	494										
	In the matter of Estate	Mary Koch	will & devise	29	577										
10-20-61	Ronald Frederick, etal	Hansen Brothers	Exec.	29	596										
	Westgate Properties, Inc.	Whom it May Concern	plat	4	11										



LOT NOS. LOT NOS. LOT NOS. LOT NOS.

NE 1/4 NE 1/4 NE 1/4 NW 1/4 NE 1/4 SW 1/4 NE 1/4 SE 1/4

NW 1/4 NE 1/4 NW 1/4 NW 1/4 NW 1/4 SW 1/4 NW 1/4 SE 1/4

SW 1/4 NE 1/4 SW 1/4 NW 1/4 SW 1/4 SW 1/4 SW 1/4 SE 1/4

SE 1/4 NE 1/4 SE 1/4 NW 1/4 SE 1/4 SW 1/4 SE 1/4 SE 1/4

SEC. 36 TWP. 14 RNG. 10

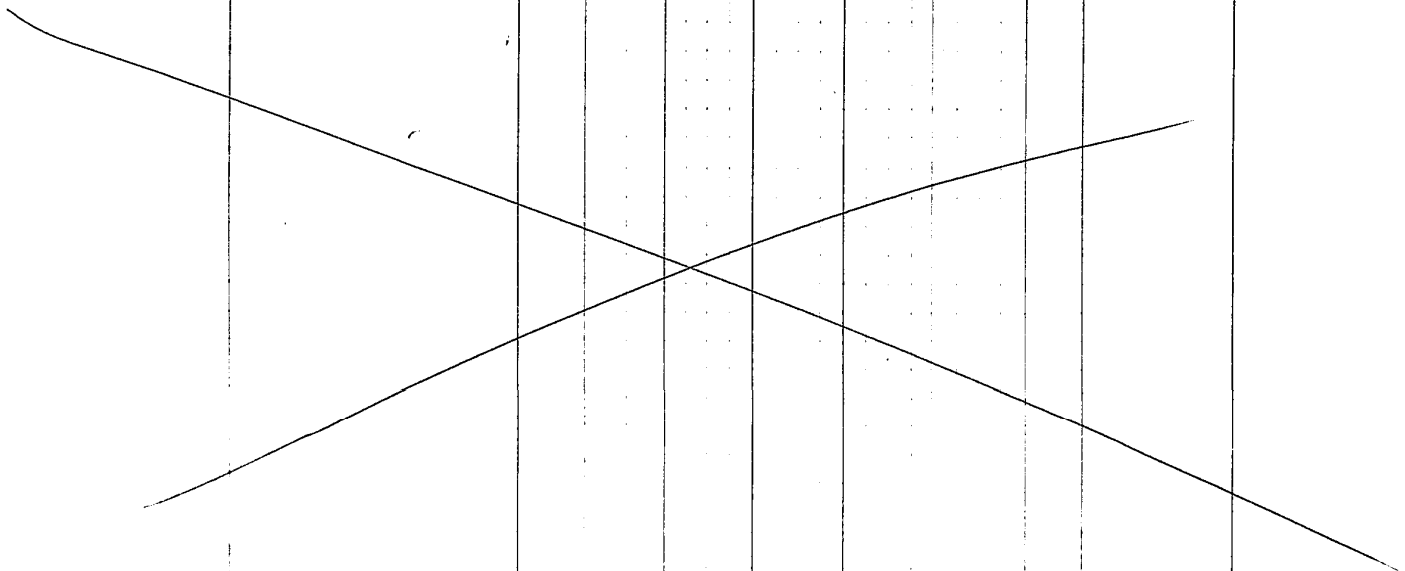
Proofread

SARPY COUNTY
NEBRASKA

362

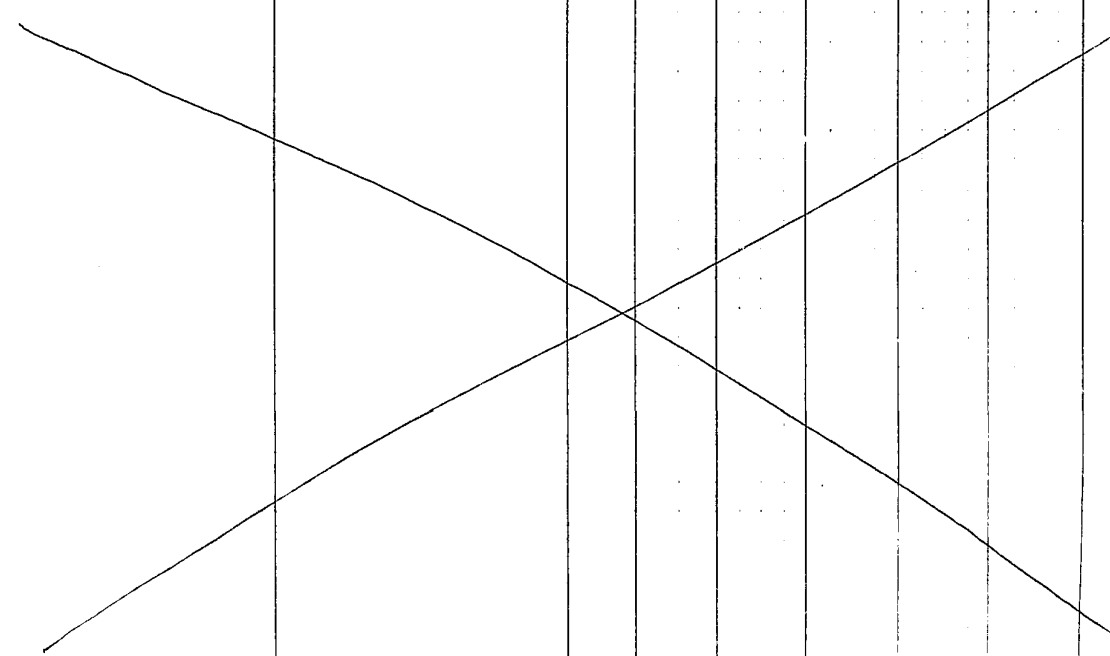
TIMES-Papillion, Nebraska

GRANTOR	GRANTEE	KIND OF INSTRUMENT	RECORD		QUARTERS				ACRES	REMARKS	DATE
			BOOK	PAGE	N.E. QUARTER	N.W. QUARTER	S.W. QUARTER	S.E. QUARTER			
				N.E.	N.W.	S.W.	S.E.				
Village of Dietna	Whom It May Concern	Ord.	1107	30							
Hansen Inc.	Whom It May Concern	Plat	83	83							
Village of Dietna	Whom It May Concern	Ord.	1107	30							
Hugo M. Schmuck, et al	Whom It May Concern	Plat	44	32							
First Federal Savings & Loan	Hugo Schmuck + w/f et al	Rel.	133	27							
Commodity Credit Corporation	Harold Harvey	License-Rel	136	471							
Howard C. Krambeck + w/f	State of Nebraska	W.S.	111	553					.30		
Herman Huff	Olson H. Truelson + w/f	Rel.	138	124							
Hansen Brothers Inc.	Farmers State Bank of Millard	Ord	138	222							
Arthur D. Weeth + w/f	Edward P. Weeth	W.S.	114	507							
Hansen Brothers, Inc.	Northern Natural Gas Co.	Ease.	32	280					77.21		
Orable M. Weeth	Whom It May Concern	Off.	32	286							
Veda D. Weeth	Krambeck Elevator Co.	W.S.	115	114							
Frances S. Koke + Hus.	Adolph Schmuck + w/f	Q.C.S.	115	159							
Frances S. Koke + Hus.	Elizabeth Schmuck	Q.C.S.	115	160							
Home State Bank	Ralph A. Burgett	Rel.	144	195							
Ralph A. Burgett	Ruff, Ben + w/f	Mtg	144	204							
Schmack, Hugo M + w/f	Northern Natural Gas Co.	Ease	32	555							
In the Matter of Estate of	Weeth, Edward P.	Dece	32	551							
Cunningham, Marquette W.	Temple Baptist Church, Palaton	Rel.	146	54							
Hansen Harold C. (Sec.)	Whom It May Concern	Off.	33	490							
Hansen Brothers, Inc.	Dietna, Village of	Q.C.S.	118	210							
Temple Baptist Church	Schram, Agnes	W.S.	118	356							
Drum, William H. + w/f	Wahoo State Bank	Mtg	151	46							
Ruff, Ben + w/f	Burgett, Ralph A. + w/f	Rel.	151	332							
Burgett, Ralph A. + w/f	Medie, Edward R. + w/f	W.S.	120	115							
Lilligan, Marie (Executrix)	Lilligan, Marie G.	Exec. Deed	120	248							
Jeskeina Rose, et al	Lilligan, Marie G.	Q.C.S.	120	304							
Hescock, Frank M. + w/f	Hescock, Jack M. et al	W.S.	120	377							
Stark Mrs Anna	Scheef, Wallace H. + w/f	option to purchase	35	65							
Frederick, Donald E.	Schmack, Hugo M + w/f	W.S.	121	707							
Stark, Anna	Scheef, Wallace H. + w/f	W.S.	123	298							
Scheef, Wallace H. + w/f	Phillips Petroleum Company	Lease	35	492							
Scheef, Wallace H. + w/f	Phillips Petroleum Company	Mtg	157	230							
Krambeck Elevator Co.	Dietna State Bank	Mtg	157	531							
Omaha National Bank	Saunders, Harry R + w/f	Rel	157	552							
Saunders, Harry R + w/f	Walsh, Albert C. + w/f	W.S.	123	423							



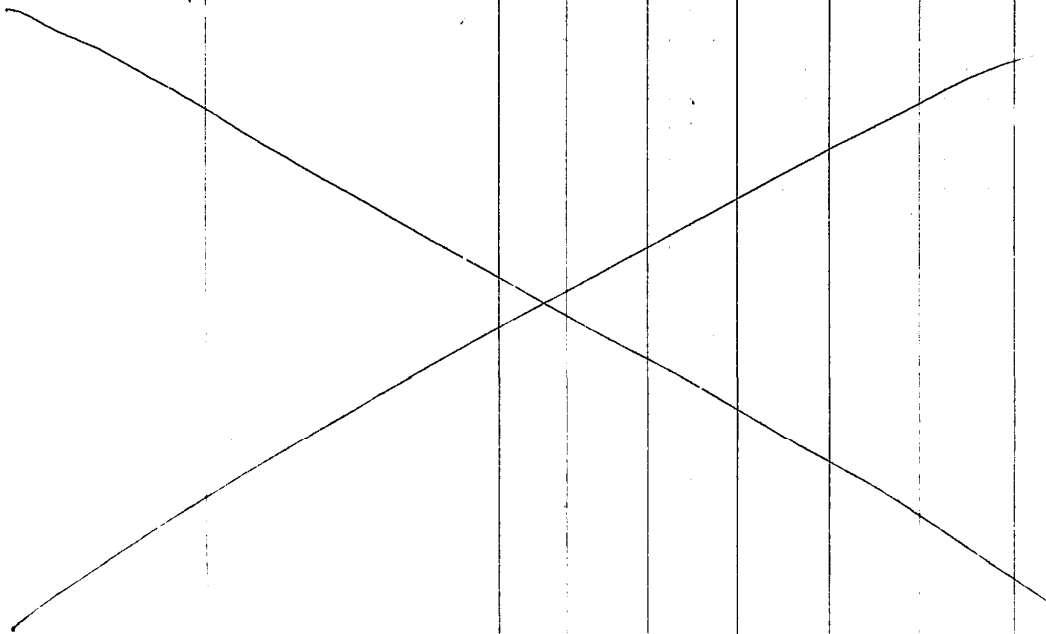
7
Prof No. 2

DATE	GRANTOR	GRANTEE	KIND OF INSTRUMENT	RECORD		N.E. QUARTER				N.W. QUARTER				S.W. QUARTER				S.E. QUARTER				ACRES	REMARKS
				BOOK	PAGE	N.E.	N.W.	E.W.	S.E.	N.W.	N.E.	S.E.	S.W.	S.W.	S.E.	E.W.	N.E.	S.E.	S.W.	N.E.	N.W.		
8-21-67	Ward, Margaret L.	Stank, Gerald J. & wife	WD	132	612																	7. D3	
8-21-67	Stank, Margaret L. & wife	Ward, Margaret L.	WD	172	651																	Rel 193-453	
1-19-68	Schramm, Agnes C. & George C.	Ch. Omaha Production Credit Assn	WD	176	287																	(P.L.K.) Rel 193-256	
2-20-68	Christna Village of	Whom it may concern	WD	37	485																	to annex T. 5 S. R. 14 W. 1/4	
2-23-68	Christna Village of	Whom it may concern	WD	119	571																	to annex	
3-27-68	In Matter of Estate of	Stank, Paul (N.M.)	WD	39	677																	Pl. 72.17	
6-18-68	Melcher, Robert & Son Melcher	Rogers, Richard D.	WD	294																		Rel 19-573	
7-10-68	Christna Village Board	Ward, John & wife	WD	40	228																	to annex	
8-21-68	Melcher, Sam & Sons	Rogers, Richard D.	WD	513																		to annex	
11-5-68	In Matter of Estate	Hearcock, Jack M.	WD	40	536																	Rel 19-484	
11-19-68	Stank, Anna	Stank, Richard D. & wife	WD	40	618																	Rel 19-681-N	
2-6-69	Hansen, Hans Wilhelm	Hansen, Reinhard A. et al	WD	140	178																	TL 74	
4-7-69	St. Patrick's Catholic Church	Whom it may concern	WD	15	28																	TL 61	
4-8-69	Sedlacek Bros, Inc	Sedlacek Bros, Inc	WD	140	613																	TL 3 Willam ad.	
4-8-69	Sedlacek Bros, Inc	Krajicek, Inc	WD	184	237																	See 205-113	
4-11-69	St. Patrick's Catholic Church	Whom it may concern	WD	25	29																		
4-23-69	Turner, C. H.	Whom it may concern	WD	91	198																	Cherokee drive	
4-28-69	Thomlich, Leonard F. et al	Brey, Wilhelm H. & wife	WD	141	94																	TL 51-02-13	
5-2-69	Schnack, Herman	Christna State Bank	WD	154	493																	Rel 191-615	
5-19-69	Schuy, Harry	Christna School District #37	WD	141	283																	Rel 190-4077	
6-13-69	Lo. Omaha Stockyard	Meyers, William L. & wife	WD	185	284																	(affid attached)	
7-8-69	Hansen Brothers Inc	American Oil Co.	WD	41	341																	TL 18-74-19	
7-18-69	Meyers, William L. & wife	Scheep, Harry	WD	142	140																	of 88-206	
7-29-69	Brey, Wilhelm H. & wife	Vickers, Rufus G. & wife	WD	186	137																	cancel 55-758	
10-10-69	Nebr State Row Director	McNelson, Margaret & Lida	WD	41	591																	TL 12	
10-10-69	Nebr State Row Director	McNelson, Harry & Clara	WD	41	593																	in Rel 194-1933	
10-10-69	Nebr State Row Director	McNelson, Frank M. et al	WD	41	595																	Pl. Rel 191-1768	
11-24-69	Scheep, Harry	Catdick, Robert H. & wife	WD	143	591																	Rel 56-45 "	
11-24-69	Catdick, Robert H. & wife	Larmer's Home Administration	WD	188	256																	80-454 "	
12-22-69	In Matter of Estate	Melchior, Edward R.	WD	42	94																	86-460 "	
12-22-69	Christna, Village of	Whom it may concern	WD	42	97																	TL 7	
12-22-69	Christna, Village of	Whom it may concern	WD	42	99																	Rel 205-11246	
1-9-70	Deitz, Eva & husband	Deitz, Adolph B. & wife	WD	145	54																	TL I	
1-20-70	Scheep, Harry	Colonial Manor of Christna, Inc	WD	43	19																	annexation	
3-2-70	Scheep, Harry	Colonial Manor of Christna, Inc	WD	43	82																	to annex Willam ad.	
3-9-70	Foged, Leif C. & wife	Foged, Ramona & wife	WD	145	355																	TL 74 E1	
3-26-70	Hughea, Hubert A.	Whom it may concern	WD	43	135																	TL 682	
4-1-70	Dunington Northern Inc.	Morgan Chem. Co. of N.Y. Trust	WD	189	482																	"	



TIMES-Pavilion, Nebraska

GRANTOR	GRANTEE	KIND OF INSTRUMENT	RECORD		N.E. QUARTER		N.W. QUARTER		S.W. QUARTER		S.E. QUARTER		ACRES	REMARKS	DATE
			BOOK	PAGE	N.E.	N.W.	S.W.	S.E.	N.E.	N.W.	S.W.	S.E.			
1134 Burlington Northern Inc.	First Nat'l City Bank, Lincoln	Mtg	189	783											4-1-70
1141 Burlington Northern Inc.	Morgan Guaranty Co. of N.Y. Trust Co.	Mtg	189	905											4-1-70
11821 Burlington Northern Inc.	Morgan Guaranty Co. of N.Y. Trust Co.	Student	189	1184											7-27-70
11822 Burlington Northern Inc.	First Nat'l City Bank, Lincoln	Student	189	1185											7-27-70
1162 Schief, Harry	Colonial Manor of Nebraska, Inc.	Continuance	43	327										T.L. 682	8-18-70
1165 Gr. Matter of Catate	Ryanoff, Martha Clayton & Hark	Decease	43	425									3	similar to Schief	11-9-70
1168 Schief, Harry	Colonial Manor of Nebraska, Inc.	Continuance	43	437											11-12-70
1193 Schnack, Minnie	Nebr. Equity Investor, Inc.	W.D.	145	2095											11-24-70
1194 Nebr. Equity Investor, Inc.	Nebraska State Bank	Mtg	189	2182										Rel 190-4290	11-24-70
1195 Nebraska State Bank	Schnack, Minnie	Rel	189	2183										of 184-493	11-24-70
1207 Jacobson, Eugene D. & wf	Jacobson Investment Co.	W.D.	145	2137									4.85±	T.L. 15°	12-3-70
1208 Jacobson, Eugene D. & wf	Jacobson Investment Co.	W.D.	145	2138										T.L. P. 2	12-3-70
1209 Grey, Wilhelm H. Cal	Shambach Leonard F.	Mtg	189	2254										at 191-4992	12-5-70
1268 Omaha Nat'l Bank	Nebr. City Land Inv. & Loan Co.	Assign	190	29										at 191-1525	1-11-71
1295 Willard, Bank of	Hansen Brothers, Inc.	Rel	190	301										at 193-491	2-10-71
1304 Nebraska State Bank	Kranbeck Elevator Co.	St. Rel	190	348										of 157-531	2-17-71
1305 Kranbeck Elevator Co.	Cockrell Fertilizer, Inc.	W.D.	146	239										T. Lot B1A	2-17-71
1329 Schnack, Minnie	Kranbeck, Howard C.	W.D.	146	337										Plots D1A3A	3-4-71
1351 Schief, Harry	Colonial Manor of Nebraska, Inc.	W.D.	44	125										Pl D1A	3-16-71
1384 Hansen Brothers, Inc.	Smith, Charles H. & Nellie M.	W.D.	146	498										T.L. 682	3-30-71
1385 Smith, Charles H. & wf	Hansen Brothers, Inc.	Mtg	190	665											3-30-71 Rel 191-678
1394 Kranbeck, Howard C.	Dickinson, Russell B. et al	W.D.	146	638										at T.L. D1A	4-19-71
1399 Smith, Charles H. et al	Whom It May Concern	Plat	5	44										"North Park"	4-26-71
1407 Burlington Northern Inc.	Morgan Guaranty Co. of N.Y. Trust Co.	Student	190	958											4-26-71
1408 Burlington Northern Inc.	First Nat'l City Bank Trust Co.	Student	190	959											4-26-71
1432 Dickinson, Russell B.	Webster, Charles C. & Wanda L.	W.D.	146	699										at T.L. D1A	4-28-71
1433 Webster, Charles C. & wf	Western Securities Co.	Mtg	190	1001										assign 190-1401	4-28-71
1450 Spitzer, Lawrence H.	Western Securities Co.	Mtg	190	1068										Rel 190-1230	5-4-71
14815 Western Securities Co.	Norfolk Bldg. & Loan Assn	Assign	190	1401										of 190-1001	6-2-71
14874 Schnack, Minnie	Nebr. Equity Investment Co.	W.D.	146	1119										Contractive	6-21-71
14927 Nebraska Village of	Whom It May Concern	Plat	44	395										Assign at T.L. 18	8-10-71
14978 Western Securities Co.	Spitzer, Lawrence H. & wf	Rel	190	2423										of 190-1068	8-11-71
15025 Schief, Harry H. & wf	Colonial Manor of Nebraska, Inc.	W.D.	146	1688										T.L. 682	8-24-71
15060 Colonial Manor of Nebraska, Inc.	School Dist of Nebraska (Dist #37)	W.D.	146	1735										at T.L. 682	8-27-71
15061 School Dist of Nebraska	Colonial Manor of Nebraska, Inc.	W.D.	146	1736										at T.L. 18	8-27-71 nop
15062 Schnack, Hugo M., et al	Whom It May Concern	Plat	44	126										Frank Hansen Subd.	8-30-71
15063 Commissioners, Sarpy County	Whom it May Concern	Resolution	44	435										Platote R.	9-8-71
15065 Spathman, Adolphus & wf	Schnack, Wilhelm P.	W.D.	146	2068										T.L. E 2 = 528' E'	9-29-71
15074 Commissioners, Sarpy County	Whom It May Concern	Resolution	44	487										Correction of main 44-435	10-15-71



LOT NOS. LOT NOS. LOT NOS. LOT NOS.

NE1/4NE1/4 NE1/4NW1/4 NE1/4SW1/4 NE1/4SE1/4

NW1/4NE1/4 NW1/4NW1/4 NW1/4SW1/4 NW1/4SE1/4

SW1/4NE1/4 SW1/4NW1/4 SW1/4SW1/4 SW1/4SE1/4

SE1/4NE1/4 SE1/4NW1/4 SE1/4SW1/4 SE1/4SE1/4

SEC. 36 TWP. 14 RANG. 10

SARPY COUNTY, NEBRASKA

367

GRANTOR	GRANTEE	KIND OF INSTRUMENT	RECORD		QUARTERS				ACRES	REMARKS	DATE
			BOOK	PAGE	N.E. QUARTER	N.W. QUARTER	S.W. QUARTER	S.E. QUARTER			
					N.E.N.W.S.W.S.E.	N.E.N.W.S.W.S.E.	N.E.N.W.S.W.S.E.	N.E.N.W.S.W.S.E.			
1251 School Dist. of Beatna	St. Patrick's Church of Beatna	W.D.	148	2945					Tax lots 7 & 5		11-23-73
12517 Drabing, Joss E. Jr. exec	Whom it May Concern	Offic. Rec.	46	698					" "		11-23-73
12518 Hayes, Louis H.	Whom it May Concern	Private	46	699					" "		11-23-73
13327 Caldwell, Margie L.	Whom it May Concern	Q.C.D.	148	856					Tax lots 2, 2, 1, 1, 1, 1		11-23-73
13342 Colonial Manor of Beatna	Beatna State Bank et al	2nd Mtg.	193	49					Rel 204-2830		1-4-74
13607 Burlington Northern Inc.	Wagon Drar. Trust Co. of Beatna	Suppl. Note	193	198							1-18-74
13608 Burlington Northern Inc.	First Natl City Bank, Trustee	Suppl. Note	193	199							1-18-74
14165 Omaha Prod. Credit Assn	Latham, George R. & Agnes C.	Rel.	193	256							1-25-74
14185 Schewartz, Raymond, Exec.	Parkert, Derlad J. & wf	Rel.	193	453							2-13-74
15031 Paulsen, Donald H. & wf	Bodle, John R. & wf	W.D.	149	581					T.L. 848		3-22-74
15040 Bodle, John R. & wf	First Nat. Sav. Loan Assn of Beatna	Mtg.	193	870					Rel 208-2361		3-22-74
17171 Paulsen, Herbert H. & wf	Paulsen, Donald H. & wf	Q.C.D.	149	1552					(Rel 7-8-84)		7-11-74
18186 Hander, Henry	Kroner, Robert V. & wf	Rel.	193	2530							7-17-74
18187 Paulsen, Donald H. & wf	Kroner, Robert V. & wf	W.D.	149	1446							7-17-74
18277 Kroner, Robert V. & wf	Butchard, Kenneth W. & wf	W.D.	149	1499					T.L. C 9A, 84		7-20-74
18278 Butchard, Kenneth W. & wf	Wahos Fed. Sav. & Loan Assn.	Mtg.	193	244					Rel 201-1714		7-24-74
41534 Wab. City Fed. Sav. & Loan Assn	Walsh, Albert C. & wf	Rel.	149	411							12-10-74
41600 Carmstrong, Laura J.	Anderson, Robert L. & wf	W.D.	149	795					T.L. 84A		12-12-74
43157 Weeth, Verda D.	Cookerill Fertilizer, Inc.	W.D.	150	368							3-5-75
4476 Kongerman, Maxine	Dedacac Bros, Inc.	Rel.	194	125					T.L. 818		6-20-75
4475 J. & L. Co. Bros, Inc.	Wahos Fed. Sav. & Loan Assn.	Mtg.	194	826					of 172-84		1-2-75
1525 Drey, Donald L. & wf	Beatna State Bank	Mtg.	194	935					Rel 90-00172		6-24-75
1523 Ucker Petroleum Corp	Drey, William H. & wf	Rel.	194	133					Rel 205-3051		6-24-75
1524 Schmick, Leonard J.	Drey, Wilhelm H. & wf	Rel.	194	134					7-19-77 (9m)		6-24-75
17354 Reynolds, William L.	Whom it May Concern	Charter	48	553					of 186-73		6-27-75
17376 Warren, J. W.	Whom it May Concern	Offic. Rec.	48	559					of 189-2254		10-17-75
17440 Burlington Northern Inc.	First Natl City Bank Trustee	Suppl. Note	194	314							10-17-75
17441 Burlington Northern Inc.	Wagon Drar. Trust Co. of Beatna	Suppl. Note	194	315							10-23-75
17902 Judd, Platte County	Anderson, Robin Anne	Case	48	571					T.L. 681		11-7-75
18490 Walsh, Albert & wf	City of Beatna	Case	48	641					23rd Comp. 2d Sub.		12-4-75
1879 Paulsen, Donald H. & wf	Beatna State Bank	Mtg.	195	116							1-12-76
1821 Jackson Investment Co. & Missionary Alliance	Missionary Alliance Western Dist. of the Christian Church	W.D.	151	807					R. T.L. 15C		4-2-76
1824 Mission Dist. of the Christian Church	Jackson Investment Co.	Mtg.	195	184					Rel 188-5788		4-2-76
1820 Jackson Invest. Co.	Missionary Alliance Western Dist. of the Christian Church	Case	49	153							4-2-76
1876 W. H. H. Administration	Kroner, Robert V. & wf	Rel.	195	139							5-12-76
1839 Drey, Donald L. & wf	DeVault, Samuel C. et al	W.D.	151	1094							5-4-76
18311 DeVault, Samuel C. et al	Drey, Donald L. & wf	Mtg.	195	1707							5-4-76
18300 DeVault, Samuel C. et al	Drey, Donald L. & wf	T.C.C.	8	28					Rel 205-5854		5-4-76
1835 Jackson Investment Co. & Missionary Alliance	Western Dist. of the Christian Church	Rel.	195	300							8-27-76
1873 Missionary Alliance	Missionary Alliance Western Dist. of the Christian Church	Mtg.	195	105							8-2-74
1874 Malon, Irving W.	Whom it May Concern	Offic. Rec.	49	133							11-23-76
18209 Word of Life Alliance	Word of Life Alliance	Case	50	8					Rel 185-4005		1-5-77

DATE	GRANTOR	GRANTEE	KIND OF INSTRUMENT	RECORD		QUARTERS				ACRES	REMARKS
				BOOK	PAGE	N.E. QUARTER	N.W. QUARTER	S.W. QUARTER	S.E. QUARTER		
1-1-77	Crosbie, Edward A. et al	Davis, Phillip E. et al	W.D.	152	1157			3		3.62	T.L. B.2 6274
8-3-77	Hansen, Reinhart A. et al	Fredricks, Eric J. et al	W.D.	152	2221						T.L. B.1 6135
8-3-77	Fredricks, Leo J. et al	Mel Atholstad, In. Assn	W.D.	146	3886						Rel 200-5043 20117
9-2-77	Howard, Charles E. et al	Brady, Raymond H. et al	W.D.	50	737						T.L. L.2A 72630
9-2-77	Atch, Richard H. et al	Brady, Raymond H. et al	W.D.	50	740						72631
11-2-77	Spake, Harry	Johnson, Vilas W. et al	W.D.	152	2386						T.L. L.2 73718
12-1-77	Kennel, Vilas W. et al	Fri-Federal Land Bank	W.D.	146	6205						73719
1-6-78	Doble, John R. et al	First Federal Bank	W.D.	197	68						Rel 200-5043 20117
3-14-78	Fredricks, Donald E. et al	First Federal Bank	W.D.	153	736						73720
4-25-78	Brooks, John R. et al	First Fed Sav. & Lm. Assn	W.D.	197	185						Rel 200-5043 20117
5-25-78	Schnack, Elizabeth	Dietze, Robert J. et al	W.D.	153	1354						(T.L. P.4) 4391
5-31-78	Farkes, Harold J. et al	Farmers Union	W.D.	163	1403						T.L. D.3 4581
6-2-78	W. L. Spake et al	Lepp Bros Inc	W.D.	153	1357						T.L. L.2E 440
6-24-78	W. L. Spake et al	Dietze, Adolph Bernard	W.D.	153	1166						T.L. E.1 5791
6-30-78	Dietze, Eva	Dietze, Eva et al	W.D.	153	1198						T.L. E.1 5810
7-10-78	Burlington Northern Inc	Organizational Trust Co	W.D.	197	3439						6094
7-10-78	Burlington Northern Inc	Central Bank of Nebraska	W.D.	197	3440						6100
7-10-78	Farmers Union Co	Omaha Bank for Cooperatives	W.D.	197	3435						Rel 200-5043 20117
7-10-78	Farmers Union Co	Omaha Bank for Cooperatives	W.D.	996							6109
8-14-78	Rogers, Katha V. Mrs	Rogers, Richard D. et al	W.D.	R 226							7677
8-28-78	Rogers, Katha V.	Whom it May Concern	W.D.	R 243							882
9-6-78	Lin Federal Sav. & Lm. Assn	The State of Nebraska	W.D.	153	232						8628
9-6-78	Lin Federal Sav. & Lm. Assn	The State of Nebraska	W.D.	61	592						8629
10-3-78	Fredricks, Donald E. et al	Omaha Public Records	W.D.	51	668						9856
10-20-78	In matter of Estate	Heacock, Marysnes	W.D.	51	716						under 14int. 10043
11-28-78	Uttrua, City of	Whom it May Concern	W.D.	51	716						12088
1-23-79	Central Bank, D. H. Quater	Whom it May Concern	W.D.	52	49						468
1-23-79	Fredricks, Donald E. et al	Nebraska State of	W.D.	154	209						76
1-24-79	Fredricks, Donald E. et al	Nebraska State of	W.D.	52	51						767
1-24-79	Smith, John J. Co-trustee	Nebraska State of	W.D.	154	210						768
1-30-79	Fri-Federal Sav. & Lm. Assn	Fredricks, Donald E. et al	W.D.	52	61						934
2-1-79	Fredricks, Donald E.	Uttrua State Bank	W.D.	154	287						Rel 200-5043 20117
2-4-79	Schnack, Elizabeth	Dietze, Robert J. et al	W.D.	154	358						T.L. B.2 1238
2-6-79	Ruzoff, Albert	Ruzoff, Jania et al	W.D.	154	447						T.L. N 1598
3-9-79	Heacock, J. M. et al	Heacock, J. M. et al	W.D.	154	574						T.L. G.1, 4, N. 1928
3-9-79	Heacock, J. M.	Whom it May Concern	W.D.	52	124						1230
3-9-79	Hensler, Dale D.	Whom it May Concern	W.D.	52	125						1927
3-12-79	Rogers, Katha V.	Rogers, Richard D. et al	W.D.	5	84						Rel 200-5043 20117
3-12-79	Ruzoff, Jania et al	Carl, John E. et al	W.D.	154	592						T.L. N 01981
3-12-79	Carl, John E. et al	Fri Fed Sav. & Lm. Assn	W.D.	198	1064						Rel 200-5043 20117
3-13-79	Webb, Rodney et al	Fed's Land Bank of Omaha	W.D.	198	1087						T.L. S. 6.1, 4, I. 20
3-13-79	Ruzoff, Jania et al	Webb, Rodney et al	W.D.	154	606						T.L. S. 6.1, 4, I. 20
3-17-79	Webber, Charles E. et al	Hull, John R. et al	W.D.	154	647						Rel 200-5043 20117
3-17-79	Hull, John R. et al	Federal Land Bank of Omaha	W.D.	198	1156						2157
3-20-79	Houser, Charles et al	Carl, John E. et al	W.D.	52	148						Rel 200-5043 20117
3-20-79	Carl, John E. et al	Houser, Charles et al	W.D.	5	2149						T.L. N 2190
3-23-79	Webber, Charles E. et al	Webber, Charles E. et al	W.D.	198	130						T.L. N 2191
3-29-79	Uttrua, City of	Whom it May Concern	W.D.	52	175						Rel 200-5043 20117

LOT NOS. LOT NOS. LOT NOS. LOT NOS.
 NE1/4NE1/4 NW1/4NE1/4 SW1/4NE1/4 SE1/4NE1/4
 NE1/4NW1/4 NW1/4NW1/4 SW1/4NW1/4 SE1/4NW1/4
 NE1/4SW1/4 NW1/4SW1/4 SW1/4SW1/4 SE1/4SW1/4
 NE1/4SE1/4 NW1/4SE1/4 SW1/4SE1/4 SE1/4SE1/4

SEC. 36 TWP. 14 RING 10

SARPY COUNTY NEBRASKA 370

TIMES-Pullman, Nebraska

DATE	GRANTOR	GRANTEE	KIND OF INSTRUMENT	RECORD				ACRES	REMARKS
				BOOK	PAGE	N.E. QUARTER	N.W. QUARTER		
10-17-83	Newcast Mortgage, Inc.	First Wisconsin Trust Co	Assign.	202	625				1/2 REC-3077
10-17-83	Koke, Prange & Co.	Koke, Prange	Q.C.D.	158	3021				1/2 REC-3077
10-27-83	Underwood, Robert L. & wife	Underwood, Jr, Charles & Family	Deed	202	624				1/2 REC-3077
10-27-83	First Fed. Sav. & Loan Assn.	Delacruz Bros. et al	Deed	56	705				1/2 REC-3077
12-15-83	Wachler, Ernest et al & wife	Wachler, Herbert et al	W.D.	158	260				1/2 REC-3077
12-22-83	Midland State Bank	Delacruz, Donald H. & wife	Rel.	202	705				1/2 REC-3077
1-4-84	Sarpy County Savings Co.	Anderson, Robert L. & wife	Rel.	203	72				1/2 REC-3077
1-6-84	Miller, James G. & wife	Erner, Char. Fed. Sav. & Loan	Deed	203	77				1/2 REC-3077
3-15-84	Fogarty, Roy Perry et al	Miller, Angeline P.	Deed	57	149				1/2 REC-3077
6-14-84	Catholic of Koke, et al et al	Newcast Bank Co. - S. M. H.	Rel.	203	366				1/2 REC-3077
6-28-84	In Matter of Estate of	Schnack, Adolph	Deed	57	438				1/2 REC-3077
6-28-84	Schnack, Marcus C. et al	Schnack, Marcus C. et al	Deed	15	165				1/2 REC-3077
6-28-84	Schnack, Marcus C. et al	Kracht, Arnold & wife	W.D.	159	68				1/2 REC-3077
6-28-84	Kracht, Arnold R. & wife	Hagan, III, Dennis P. Trustee	Deed	203	394				1/2 REC-3077
6-29-84	Melin, Hazel P., Sumner Reg.	Melin, Hazel P.	Deed	159	702				1/2 REC-3077
12-10-84	Schramm, George R.	Schramm, Agnes C.	Q.C.D.	159	342				1/2 REC-3077
12-24-84	Savies, Phillip E. et al	Springfield State Bank	Deed	203	798				1/2 REC-3077
1-8-85	Schramm, Agnes C.	Schramm, Agnes et al	Q.C.D.	160	72				1/2 REC-3077
1-28-85	In Matter of Estate of	Schnack, Mayme F.	Deed	58	357				1/2 REC-3077
3-20-85	Wachler, Herbert	Whom it May Concern	Lat	8	68				1/2 REC-3077
3-25-85	Stamm, William H. et al	Stamm, Bernice J.	W.D.	160	45				1/2 REC-3077
4-1-85	Arff, Lois M.	Whom it May Concern	W.D.	160	552				1/2 REC-3077
4-17-85	In Matter of Estate of	Martens, Charlotte	Deed	58	671				1/2 REC-3077
4-24-85	Luman Bros, Inc.	Gretna State Bank	Deed	204	236				1/2 REC-3077
5-14-85	Gretna State Bank	Colonial Mowers & Gretna	Rel.	204	230				1/2 REC-3077
6-7-85	Carl, John E. & wife	Gretna Area Develop. Corp.	W.D.	160	131				1/2 REC-3077
6-7-85	Gretna Area Develop. Corp.	Gretna State Bank	Mtg	204	234				1/2 REC-3077
7-1-85	Amaha Bank for Cooperatives	Farmers Union Cooperative	Q.C.C.	11	92				1/2 REC-3077
7-2-85	First Fed. Sav. & Loan Assn.	Carl, John E. & wife	Rel.	204	285				1/2 REC-3077
8-14-85	Carl, John E. & wife	Schramm, James R. & wife	W.D.	160	289				1/2 REC-3077
8-16-85	Schramm, James R. & wife	Gretna State Bank	Deed	204	234				1/2 REC-3077
10-28-85	First Fed. Sav. & Loan Assn.	Delacruz Bros. et al	Deed	58	239				1/2 REC-3077
11-4-85	Hansen Bros, Inc.	Scope Cable Television, Inc.	Case	58	249				1/2 REC-3077
11-12-85	Hansen Brothers, Inc.	Scope Cable Television, Inc.	W.D.	160	317				1/2 REC-3077
11-12-85	Scope Cable Television, Inc.	Atkinson Cable Communications, et al	W.D.	160	318				1/2 REC-3077
11-12-85	In Matter of Estate of	Hansen Bros., Inc.	Rel.	204	487				1/2 REC-3077
11-12-85	Karis, Phillip E. & wife	Moehy, Dr. Robert L. & wife	W.D.	160	323				1/2 REC-3077
11-12-85	Moehy, Dr. Robert L. & wife	Protein Financing, Inc.	Deed	58	245				1/2 REC-3077
11-12-85	Moehy, Dr. Robert L. & wife	Protein Financing, Inc.	Deed	58	248				1/2 REC-3077
11-14-85	Springfield State Bank	Harris, Philip J. et al	Deed	204	157				1/2 REC-3077
12-2-85	Schramm, James R. & wife	River City Natl Bank	Deed	204	275				1/2 REC-3077
12-23-85	Mutton, Harold et al	Lockman, Jeffrey W. et al	Deed	160	357				1/2 REC-3077
12-23-85	Lockman, Jeffrey W. & wife	First Fed. Sav. & Loan Assn.	Deed	58	279				1/2 REC-3077
12-23-85	Lockman, Jeffrey W. & wife	First Fed. Sav. & Loan Assn.	Deed	58	284				1/2 REC-3077
12-23-85	First Fed. Sav. & Loan Assn.	The Great Sav. & Loan Assn.	Deed	204	275				1/2 REC-3077
12-30-85	Spapp Bros, Inc.	Phillips Petroleum Company	Deed	58	282				1/2 REC-3077
1-2-86	Hartman, Inc.	Phillips Petroleum Company	Deed	58	282				1/2 REC-3077
1-2-86	Hartman, Inc.	Phillips Petroleum Company	Deed	58	282				1/2 REC-3077

LOT NOS. LOT NOS. LOT NOS. LOT NOS. LOT NOS.

NE 1/4 NE 1/4 NW 1/4 NE 1/4 SW 1/4 NE 1/4 SE 1/4
 NW 1/4 NE 1/4 NW 1/4 SW 1/4 NW 1/4 SE 1/4
 SW 1/4 NE 1/4 SW 1/4 SW 1/4 SE 1/4
 SE 1/4 NE 1/4 SE 1/4 SW 1/4 SE 1/4 SE 1/4

SEC. 36 TWP. 14 R. 10

SARPY COUNTY
 NEBRASKA 371

TIMES-Papillon, Nebraska

GRANTOR	GRANTEE	KIND OF INSTRUMENT	RECORD		QUARTERS				ACRES	REMARKS	DATE
			BOOK	PAGE	N.E. QUARTER	N.W. QUARTER	S.W. QUARTER	S.E. QUARTER			
143 Bayler, Randall & wife	C.F.S. Mortgage Corp.	Rel.	205	103						Deed 205-103	1-10-86
144 Bayler, Randall & wife	C.F.S. Mortgage Corp.	Rel.	205	64						Deed 205-64	1-10-86
145 Metzger, Iva. et al	Bayler, Randall & wife	W.D.	161	74						Deed 161-74	1-10-86
146 Laake Bros, Inc.	Springfield State Bank	Rel.	205	343						Deed 205-343	1-21-86
147 Laake, Lois	Wichita State Bank	Rel.	59	54						Deed 59-54	1-27-86
148 192 Gestina State Bank	Lehman, James R. et al	Rel.	205	100						Deed 205-100	2-27-86
149 Schimmritz, William J.	Cattano, Terry et al	Rel.	161	444						Deed 161-444	3-3-86
150 Cattano, Terry et al	Amer. Char. Homeown. Soc.	Rel.	59	426						Deed 59-426	3-3-86
151 Cattano, Terry et al	Amer. Char. Homeown. Soc.	Rel.	205	1007						Deed 205-1007	3-3-86
152 Publicop Limited Inc.	Commerce Bank of N.C.	Rel.	205	1007						Deed 205-1007	3-5-86
153 Publicop Limited Inc.	Commerce Bank of N.C.	Rel.	205	1007						Deed 205-1007	3-5-86
154 197 Schiefel, Sarpy County	Springfield State Bank	Rel.	161	548						Deed 161-548	3-17-86
155 190 Farmers Home Admin.	Schimmritz, William J. et al	Rel.	205	475						Deed 205-475	3-17-86
156 191 Pack, Friedl Co.	Frederick Bros. Inc.	Rel.	59	504						Deed 59-504	4-15-86
157 192 Schimmritz, James R. et al	Wichita State Bank	Rel.	205	344						Deed 205-344	5-13-86
158 193 State State Bank	Bay, Ronald T. et al	Rel.	205	325						Deed 205-325	5-20-86
159 194 Farmers Union Coop.	Bank of the Midlands	Rel.	59	1318						Deed 59-1318	5-20-86
160 194 Farmers Union Coop.	Bank of the Midlands	Rel.	205	3976						Deed 205-3976	5-20-86
161 Metzger, Robert J. et al	Metzger, Alan J. et al	W.D.	161	1216						Deed 161-1216	6-3-86
162 Metzger, Alan J. et al	Citicorp Homeowners Soc.	Rel.	59	1360						Deed 59-1360	6-3-86
163 Metzger, Alan J. et al	Citicorp Homeowners Soc.	Rel.	205	1008						Deed 205-1008	6-3-86
164 195 Omaha Bank for Cooperative	Farmers Union Coop. Assn. of Sarpy Co.	Rel.	205	4677						Deed 205-4677	6-17-86
165 194 Omaha Bank for Cooperative	Farmers Union Coop. Assn. of Sarpy Co.	Rel.	205	4648						Deed 205-4648	6-17-86
166 194 Omaha Bank for Cooperative	Farmers Union Coop. Assn. of Sarpy Co.	Rel.	11	92						Deed 11-92	6-18-86
167 192 Brubaker, Herbert A.	W.D. # 55, Sarpy Co. Nebr.	Rel.	59	176						Deed 59-176	6-26-86
168 191 Kennel, V.W. et al	Ken Masters Corp.	Rel.	205	3478						Deed 205-3478	7-7-86
169 1955 Bay, Donald T. et al	De Vault, Samuel C. et al	Rel.	205	5954						Deed 205-5954	7-17-86
170 1956 Bankers Trust Company	Scheff, Wallace W. et al	Rel.	205	3446						Deed 205-3446	7-30-86
171 195 Campbell, Henry M.	Campbell, Nancy A.	W.D.	161	1952						Deed 161-1952	8-1-86
172 197 Spickard, Herbert H.	Spickard, Bruce K. et al	W.D.	161	243						Deed 161-243	9-2-86
173 197 Spickard, James L. et al	First Nat. Bank of Sarpy Co.	Rel.	205	9359						Deed 205-9359	9-20-86
174 190 Fogel, Wolf et al	Blowman, David A. et al	Rel.	59	3015						Deed 59-3015	10-2-86
175 1983 Kake, Frances L. et al	Johnson, Mark A. et al	W.D.	161	2918						Deed 161-2918	10-8-86
176 1985 Johnson, Mark A. et al	Johnson, Shirley M. et al	W.D.	205	465						Deed 205-465	10-8-86
177 1984 Johnson, Mark A. et al	Johnson, Shirley M. et al	W.D.	59	3134						Deed 59-3134	10-10-86
178 1940 De Vault, Samuel C. et al	Lehman, James R.	W.D.	161	3442						Deed 161-3442	10-10-86
179 1982 American Char. Fed	Spickard, James L. et al	Rel.	205	10176						Deed 205-10176	10-21-86
180 1988 Oetdick, Robert H. et al	Catholic Workman	Rel.	205	10184						Deed 205-10184	10-21-86
181 1983 First Fed. Sav. & Lm. Assn.	Creative Financing Inc.	Rel.	205	1065						Deed 205-1065	10-20-86
182 1985 Farmers Home Admin.	Oetdick, Robert H. et al	Rel.	205	1171						Deed 205-1171	11-12-86
183 1985 Johnson, George R. et al	Bank of the Midlands	Rel.	205	1236						Deed 205-1236	12-10-86
184 1984 First Fed. Sav. & Lm. Assn.	Frederick Bros, Inc.	Rel.	59	4065						Deed 59-4065	12-26-86
185 194 Citicorp Homeowners Soc.	Citicorp Homeowners Soc.	Rel.	206	31						Deed 206-31	1-2-87

LOT NOS. NE 1/4 NE 1/4, NW 1/4 NE 1/4, SW 1/4 NE 1/4, SE 1/4 NE 1/4, NE 1/4 NW 1/4, NW 1/4 NW 1/4, SW 1/4 NW 1/4, SE 1/4 NW 1/4, NE 1/4 SW 1/4, NW 1/4 SW 1/4, SW 1/4 SW 1/4, SE 1/4 SW 1/4, NE 1/4 SE 1/4, NW 1/4 SE 1/4, SW 1/4 SE 1/4, SE 1/4 SE 1/4

SEC. 36 TWP. 14 RING 10

SARBY COUNTY NEBRASKA 372

1166-Parillon, Nebraska

DATE	GRANTOR	GRANTEE	KIND OF INSTRUMENT	RECORD		QUARTERS				ACRES	REMARKS
				BOOK	PAGE	N.E. QUARTER	N.W. QUARTER	S.W. QUARTER	S.E. QUARTER		
1-22-87	Wm. M. Long & Son	James, James L. & wife	Rel	206	656						202-2017 1152
1-23-87	Peper & Wierman Trust Co.	H. M. A. C. Mfg. Corp of Omaha	W.D.	206	794						202-3077 1214
2-24-87	Carl, John E. & Joan D.	Electric Area Development Corp.	W.D.	162	440						2952
2-24-87	Carl, John E. & Joan D.	Electric Area Development Corp.	W.D.	162	441						2953
4-12-87	Shadlock Bros. Inc.	Hood, Thelma L. et al	Rel	206	610						10186
6-12-87	First Nat. Sav. & L. Assn. of	Shadlock Bros. Inc.	Rel.	206	609						2018-5194 10187
6-29-87	Anderson, Robert L. & wife	Centra State Bank	Acct	60	2141						1234
6-29-87	Anderson, Robert L. & wife	Centra State Bank	Deed	206	6748						11233
7-6-87	Waeth, Rodney et al	Bank of Papillion	Deed	206	2211						1160
7-6-87	Waeth, Rodney et al	W. Lynn & M. J. Conner	Deed	206	2214						1163
7-6-87	Waeth, Rodney et al	Bank of Papillion	Deed	206	2213						1162
7-6-87	Federal Land Bank of Omaha	Waeth, Rodney et al	Rel	206	2214						1164
7-17-87	Ottobick, Robert H. & wife	First Nat. Sav. & L. Assn.	Rel	206	7453						198-1087 1167
7-27-87	Koke, Francis L. Jr.	Standy, Inc.	W.D.	162	2079						1213
7-27-87	Sederstrom, Jr. Charles V.	Anderson, Robert L. & wife	Deed	206	7197						12847
7-27-87	Farmers Home Adm.	Armstrong, Roger W. et al	Rel	206	7515						12941
8-13-87	Kracht, Arnold & wife	Centra State Bank	Acct	60	2591						12940
8-13-87	Kracht, Arnold & wife	Centra State Bank	Deed	206	2524						14024
8-18-87	Hogan III, Dennis P., Tr.	Kracht, Arnold R. & wife	Deed	206	2518						14025
8-31-87	Creative Financing, Inc.	Standard Federal Sav. & L. Assn.	Rel	206	2975						15226
9-10-87	Hogan III, Dennis P., Tr.	Kracht, Arnold R. & wife	Deed	206	2441						15227
9-22-87	Harris, David L. & wife	Centra State Bank	Rel	60	2937						10131
9-22-87	Harris, David L. & wife	Centra State Bank	Deed	206	4609						16132
9-24-87	St. of NE Dept. of Roads	Smith, John J. et al, Tr.	Q.C.D.	162	2725						16244
10-16-87	Creative Financing, Inc.	Standard Fed. Sav. & L. Assn.	Rel	206	10283						17280
10-20-87	Centra State Bank	Kreeters, James Lee, et al	W.D.	162	2949						17445
11-3-87	Catholic Workman	Skudlarek, Joseph J., Tr.	Subst. Mortg.	206	10104						18116
11-13-87	Mick, Merifred C.	Judke, Roger D. & wife	W.D.	162	3168						15109
11-13-87	Judke, Roger D. & wife	American Natl. Bank	Deed	206	11053						15110
11-13-87	Judke, Roger D. & wife	American Natl. Bank	Deed	206	11054						15111
11-18-87	McGuire, Bonifac R., Tr.	Johnson, Mark A., et al	Deed	206	1139						18241
12-4-87	Loester, James Lee et al	Centra State Bank	Deed	206	3555						18447
12-4-87	Kreeters, James Lee et al	Centra State Bank	Deed	206	1148						19447

Numerical Land Index, Sarpy County, Nebraska

LOT NOS.	LOT NOS.	LOT NOS.	LOT NOS.
NE ¹ / ₄ NE ¹ / ₄ _____	NE ¹ / ₄ NW ¹ / ₄ _____	NE ¹ / ₄ SW ¹ / ₄ _____	NE ¹ / ₄ SE ¹ / ₄ _____
NW ¹ / ₄ NE ¹ / ₄ _____	NW ¹ / ₄ NW ¹ / ₄ _____	NW ¹ / ₄ SW ¹ / ₄ _____	NW ¹ / ₄ SE ¹ / ₄ _____
SW ¹ / ₄ NE ¹ / ₄ _____	SW ¹ / ₄ NW ¹ / ₄ _____	SW ¹ / ₄ SW ¹ / ₄ _____	SW ¹ / ₄ SE ¹ / ₄ _____
SE ¹ / ₄ NE ¹ / ₄ _____	SE ¹ / ₄ NW ¹ / ₄ _____	SE ¹ / ₄ SW ¹ / ₄ _____	SE ¹ / ₄ SE ¹ / ₄ _____

SEC. 36 TWP. 14 RANG. 10

SARPY COUNTY
NEBRASKA 373

DATE	GRANTOR	GRANTEE	KIND OF INSTRUMENT	RECORD INSTRUMENT NUMBER	N.E. QUARTER				N.W. QUARTER				S.W. QUARTER				S.E. QUARTER				ACRES	REMARKS
					N.E.	N.W.	S.E.	S.W.	N.E.	N.W.	S.E.	S.W.	N.E.	N.W.	S.E.	S.W.	N.E.	N.W.	S.E.	S.W.		
1-4-88	In Matter of Estate of F.S. Mfg. Corp.	Eikberg, John W.	Pending	88-00031																		
1-27-88	Dietz, Robert J. & P. Rep.	First Farm Mfg. Corp of Neb	Lease	88-10044																		
2-2-88	Dietz, Robert J. & P. Rep.	Frederick, Donald E. et al	Lease	88-01319																		
2-7-88	Griffin, Ethel A. Bank	Frederick, Donald E. et al	Rel.	88-02539																		
3-7-88	Lehman, James R. et al	Whom it may concern	Acq.	88-02577																		
3-7-88	Gehring, James B. & Wf	River City National Bank	Deed	88-02578																		
3-21-88	Dehnen, James R. et al	River City Nat. Bank	Lease	88-02214																		
3-21-88	Dehnen, James R. et al	James & Nettleton Co.	Acq.	88-02244																		
5-11-88	Hansen Bros. Inc.	Hansen Bros. Inc.	Rel.	88-02524																		
5-11-88	Hansen Bros. Inc.	Detna State Bank	Acq.	88-02525																		
5-17-88	Wick, Wayne J. & Wf	Detna State Bank	Deed	88-02521																		
5-17-88	Wick, Wayne J. & Wf	Wick, Wayne J. & Wf	Rel.	88-02225																		
5-17-88	Millander Mfg. Co.	Millander Mfg. Co.	Mfg.	88-02206																		
6-9-88	Wick, Wayne J. & Wf	United Nat. Corp.	Acq.	88-02267																		
6-9-88	Wick, Wayne J. & Wf	Wick, Wayne J. & Wf	Rel.	88-02265																		
6-14-88	Frederick, Donald E. et al	Detna State Bank	Acq.	88-02266																		
6-14-88	Frederick, Donald E. et al	Detna State Bank	Trust Deed	88-07991																		
6-21-88	Hastings, James Lee et al	Detna State Bank	Acq.	88-08276																		
6-21-88	Hastings, James Lee et al	Detna State Bank	Deed	88-08277																		
8-4-88	Campbell, Nancy D.	Paulsen, Gene R. et al	Rel.	88-10792																		
8-4-88	Paulsen, Gene R. & Wf	Amer. Char. Sec. Sav. & Loan	Trust	88-10793																		
8-16-88	Wick, Wayne J. & Wf	Wick, Wayne J. & Wf	Rel.	88-11261																		
8-16-88	Wick, Wayne J. & Wf	Wick, Wayne J. & Wf	Trust	88-11262																		
9-12-88	Carl J. Brown & Co.	James Mfg. U.S.A., Inc.	Design.	88-12511																		
9-19-88	Springfield State Bank	Supp. Bros. Inc.	Deed	88-13534																		
9-19-88	Supp. Bros. Inc.	Supp. Bros. Petroleum, Inc.	Rel.	88-13535																		
9-26-88	Griffin, Ethel A. Bank	Campbell, Nancy D. et al	Rel.	88-13978																		
9-30-88	Bethesda Foundation	M.T.C. West, Inc.	WD	88-14256																		
9-30-88	M.T.C. West, Inc.	Whom it may concern	Acq.	88-14257																		
9-30-88	M.T.C. West, Inc.	Fidelity Bank, N.A.	Trust	88-14258																		
9-30-88	Bethesda Care Center	Fidelity Bank N.A. et al	UCC	88-14259																		
9-30-88	M.T.C. West, Inc.	Fidelity Bank, N.A. et al	UCC	88-14260																		
10-7-88	Supp. Bros. Petroleum, Inc.	Detna State Bank	Acq.	88-14634																		
10-7-88	Supp. Bros. Petroleum, Inc.	Detna State Bank	Trust Deed	88-14635																		
10-14-88	Amer. Char. Sec. Sav. & Loan	Carl J. Brown & Co.	Acq.	88-14908																		
10-27-88	Mosby, Robert L. Sr. & Wf	Detna State Bank	Acq.	88-15623																		
10-27-88	Mosby, Robert L. Sr. & Wf	Detna State Bank	Trust Deed	88-15624																		
11-14-88	Kate, Frances L.	Kate, John J. et al	Acq.	88-16502																		
11-30-88	Frederick, Donald E. et al	Detna State Bank	Acq.	88-17283																		
11-30-88	Frederick, Donald E. et al	Detna State Bank	Trust Deed	88-17284																		
12-12-88	Carl, John E. et al	Detna Area Develop. Corp.	UCC	88-17842																		
2-23-89	Equitable Fed. Sav. Bank	Colonial Museum of Detna	Rel.	89-02256																		
3-17-89	Wright, Rodney et al	Detna Area Dev. Corp.	Case	89-03085																		
3-17-89	Dehnen, James R. et al	Detna Area Dev. Corp.	Case	89-03086																		
3-17-89	Detna Area Dev. Corp.	Whom it may concern	Rel.	89-03084																		
5-9-89	Dehnen, James R. et al	River City Nat. Bank	Acq.	89-05402																		
5-9-89	Dehnen, James R. et al	River City Nat. Bank	Trust Deed	89-05403																		
5-9-89	Dehnen, James R. et al	River City Nat. Bank	Rel.	89-05404																		
6-23-89	Cattano, Terry D. & Wf	Amer. Char. Sec. Sav. & Loan	Trust	89-07789																		

Numerical Land Index, Sarpy County, Nebraska

LOT NOS. _____ LOT NOS. _____ LOT NOS. _____ LOT NOS. _____
 NE 1/4 NE 1/4 _____ NE 1/4 NW 1/4 _____ NE 1/4 SW 1/4 _____ NE 1/4 SE 1/4 _____
 NW 1/4 NE 1/4 _____ NW 1/4 NW 1/4 _____ NW 1/4 SW 1/4 _____ NW 1/4 SE 1/4 _____
 SW 1/4 NE 1/4 _____ SW 1/4 NW 1/4 _____ SW 1/4 SW 1/4 _____ SW 1/4 SE 1/4 _____
 SE 1/4 NE 1/4 _____ SE 1/4 NW 1/4 _____ SE 1/4 SW 1/4 _____ SE 1/4 SE 1/4 _____

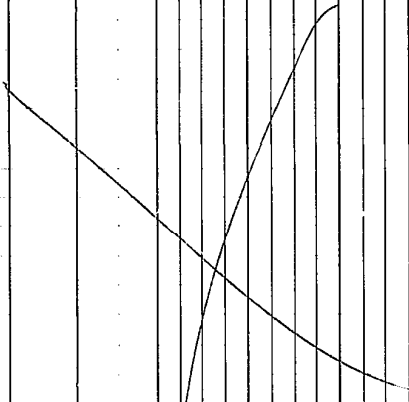
SEC 36 TWP. 14 RNG. 10

SARPY COUNTY
NEBRASKA 374

GRANTOR	GRANTEE	KIND OF INSTRUMENT	RECORD INSTRUMENT NUMBER	N.E. QUARTER				N.W. QUARTER				S.W. QUARTER				S.E. QUARTER				ACRES	REMARKS	DATE	
				N.	E.	S.	W.	N.	E.	S.	W.	N.	E.	S.	W.	N.	E.	S.	W.				
Melby, Hazel P.	Russette, Robert E. et al.	Rel	89-0825																			(52 ⁵⁰) T.L. 8-3	6-27-89
Russette, Robert E. et al.	Melby, Hazel P.	Rel	89-0825																				6-28-89
Johnson, Mark H. & wife	Dyke, Jeffrey et al	Rel	89-0926																			T.L. P101	7-27-89
Dyke, Jeffrey et al	Smith, M. Corp.	Rel	89-0926																				7-27-89
Alderson, Robert A. et al	Debra State Bank	UCC	89-0946																			120102.	7-26-89
River City Nat. Bank	Debraken, James R. et al	UCC	89-0997																			89-08-03214	8-3-89
River City Nat. Bank et al	Debraken, James R. et al	UCC	89-0997																			89-08-02578	8-3-89
River City Nat. Bank, Tr.	Debraken, James R. et al	UCC	89-0997																			89-05-3464	8-3-89
River City Nat. Bank, Tr.	Debraken, James R. et al	UCC	89-0997																			89-04-5295	8-3-89
River City Nat. Bank, Tr.	Debraken, James R. et al	UCC	89-0997																			89-05-403	8-3-89
Debraken, James R. & wife	Alderson, Robert A. et al	Rel	89-10323																			4240102	8-8-89
Alderson, Robert A. & wife	Debra State Bank	UCC	89-10324																				8-8-89
Alderson, Robert A. & wife	Debra State Bank	UCC	89-10325																				8-8-89
River City Nat. Bank	Debraken, James R. et al	UCC	89-10326																			89-05-404	8-8-89
Waven, James E. & wife	Waven, James E. & Patricia	WD	89-11994																			Ex. 2 (F.L. 200)	9-6-89
Waven, James E. & wife	Debra State Bank	UCC	89-11995																				9-6-89
Waven, James E. & wife	Debra State Bank	UCC	89-11996																			Indy Rec. 20-0586	9-6-89
City of Debra	Debra State Bank	UCC	89-12113																				9-8-89
City of Debra	Whom it may Concern	Rel	89-12486																				9-15-89
City of Debra	Whom it may Concern	Rel	89-12487																				9-15-89
Debra State Bank	Debra State Bank	Rel	89-12803																			rel.	9-21-89
Anderson, Phyllis	Debra State Bank	UCC	89-13767																				10-5-89
Anderson, Robert A. & wife	Debra State Bank	UCC	89-13768																				10-5-89
Outdick, Robert H. et al	Forewest Bank N.A.	UCC	90-00234																			T.L. 7	1-4-90
Outdick, Robert H. et al	Forewest Bank N.A.	UCC	90-00235																				1-4-90
Koenig, J. Ernest & wife	Whom it may Concern	Rel	90-00289																			Rel. Spec. 7	1-5-90
Outdick, Robert H. et al	Debra State Bank	UCC	90-02172																			7.194.1826	2-16-90
Debra State Bank, Tr.	Warren, James E. & wife	UCC	90-05816																			89-11996	5-3-90
Kramer, Robert V. & wife	Cookville Realty, Inc.	WD	90-06443																			(123 ⁰⁰)	5-9-90
Bohman, Jeffrey W. et al	First Nat. Bank of Omaha	UCC	90-07797																			T.L. 8-9	6-12-90
Conservative Sav. Bank	Conservative Sav. Bank	Rel	90-08409																			89-11996	6-20-90
Jacobson Investment	Daniel's, Dwight et al	UCC	90-09051																			7.13 P3, 16.1501	7-20-90
Daniel's, Dwight & wife	Jacobson Investment Co.	UCC	90-09052																				7-2-90
Daniel's, Dwight & wife	Jacobson Investment Co.	UCC	90-09053																				7-2-90
First Nat. Bank of Omaha	Bohman, Jeffrey W. & wife	UCC	90-09674																			88-11262	7-13-90
Kennel, Viola W. & wife	Kennel Family Trust	UCC	90-10285																			(6.17)	7-23-90
Wirth, Rodney et al	Bank of Papillion	UCC	90-10285																				8-2-90
Conservative Sav. Bank	Fredrick, Leo J. et al	Rel	90-11207																			89-116-3686	8-9-90
Sindy, Inc.	Bank Bennett L. & Phillips	WD	90-13675																			(118 ⁵⁰) T.L. P1A	9-21-90
Muelken, Herbert H.	First Nat. Bank of Omaha	UCC	90-15792																			Lot 8423	10-24-90
MTC West, Inc.	Fidelity Nat. Bank N.A.	UCC	90-15780																			Re: 88-14258	10-29-90

Computer Indexed as of September 1, 1990

36-14-10



Search Criteria = Section 36 Township 14 Range 10 and ((SwqSwq = 'X' or SwqSwq = 'P')) Quarter - Quarter of the Quarter

NE	NW	SW	SE	Instr #	Filed Date	Type	Grantor	Grantee	Remarks	SEC	TWP	RNG	Lots
**** nop	****	**pp	****	198814256	9/30/1988	DEED	BETHESDA FOUNDATION	MTC WEST INC		36	14	10	TXLT 6B2 & TXLT 18B
****	****	**pp	****	198814257	9/30/1988	ACK	MTC WEST INC	WHOM IT MAY CONCERN		36	14	10	TXLT 6B2 & TXLT 18B
**** nop	****	**pp	****	198814258	9/30/1988	DOT	MTC WEST INC	FIDELITY BANK ETAL		36	14	10	TXLT 6B2 & TXLT 18B
**** nop	****	**pp	****	198814259	9/30/1988	UCC	MTC WEST INC	FIDELITY BANK		36	14	10	TXLT 6B2 & TXLT 18B
**** nop	****	**pp	****	198814260	9/30/1988	UCC	MTC WEST INC	FIDELITY BANK		36	14	10	TXLT 6B2 & TXLT 18B
****	****	**pp	****	198902156	2/23/1989	REL	EQUITABLE FED SAVINGS BANK	COLONIAL MANOR OF GRETN A INC	BK 191 PG 1329	36	14	10	PTXLT 6B2
**** nop	****	**pp	****	199015760	10/29/1990	CADOT	MTC WEST INC	FIDELITY NATL BANK	RE 88-14258 (5)	36	14	10	
**** nop	****	*pp*	****	199108660	6/17/1991	WD	SHAMROCK CONCRETE CO INC	SHAMROCK TRUCKING ETAL	TAX LOT D1A2 & TAX LOT 19	36	14	10	
**** "	****	*pp*	****	199108815	6/19/1991	WD	THOMPSEN RICHARD E ETAL	SHAMROCK TRUCKING SERVICES	TL D1A2 & TL 19	36	14	10	
**** "	****	**pp	**p*	199227444	12/10/1992	WD	WEETH RODNEY ETAL	GOTTSCH EN TERPRISES	T LTS 1 6A1 6B1 & 18A2 CORR T LTS FJR 12-21-92	36	14	10	
**** "	****	**pp	**p*	199300499	1/8/1993	WD	WEETH RODNEY ETAL	GOTTSCH EN TERPRISES	CORRECTIVE DEED	36	14	10	6A1/18A2/1
**** "	****	**pp	****	199322168	9/2/1993	UCC	BETHESDA CARE CENTER	FIRST FIDELITY BANK	RE 88-14259	36	14	10	6B2A & 18B
****	****	**pp	****	199322169	9/2/1993	UCCC	FIRST FIDELITY BANK	MTS WEST INC	RE 88-14260	36	14	10	TXLTS 6B2A & 18B
**** "	****	**pp	****	199333252	12/30/1993	WD	MTC WEST INC	COMMUNITY CARE OF NEBRASKA INC		36	14	10	18B & 6B2A
**** "	****	**pp	****	199333253	12/30/1993	DOT	COMMUNITY CARE OF NEBRASKA INC	HEALTH & REHAB PROPERTIES TRUST ETAL		36	14	10	
**** "	****	**pp	****	199333254	12/30/1993	UCC	COMMUNITY	HEALTH &		36	14	10	

							CARE OF AMERICA INC	REHAB PROPERTIES TRUST					
****	****	**pp	****	199333255	12/30/1993	UCC	COMMUNITY CARE OF AMER AT GRETNA ETAL	HEALTH & REHAB PROPERTIES TRUST	36	14	10		
nop													
****	****	**pp	****	199333256	12/30/1993	UCC	COMMUNITY CARE OF NEBRASKA INC	HEALTH & REHAB PROPERTIES TRUST	36	14	10		
****	****	**pp	****	199413460	6/15/1994	MEMO	COMMUNITY CARE OF NEBRASKA INC	HEALTH & REHAB PROPERTIES TRUST	TAX LOTS 6B2 & 18B	36	14	10	
****	****	**pp	****	199416966	7/27/1994	WAI	HEALTH & RETIREMENT PROPERTIES TRUST	WHOM IT MAY CONCERN	OF ----- TAX LOTS 18B & 6B2A	36	14	10	
+	****	**p*	****	199500267	1/9/1995	ROW	GRETNA SCHOOL DISTRICT OF ETAL	GRETNA CITY OF	4PGS AKA SCHOOL DISTRICT #37 OF SARPY CTY	36	14	10	PT 18A1
****	****	**pp	****	199512886	8/10/1995	DOT	COMMUNITY CARE OF NEBRASKA INC	HEALTH & RETIREMENT PROP TRUST ETAL	36	14	10	18B & 6B2A	
****	****	**pp	****	199517375	10/5/1995	DOR	FIRST FIDELITY BANK TR	MTC WEST INC	OF 88-14258	36	14	10	
****	****	**pp	****	199601894	2/2/1996	CL	R L FAUSS BUILDERS INC	COMMUNITY CARE OF NEBRASKA INC	36	14	10	6B2A & 18B	
****	****	**pp	****	199603791	2/29/1996	RCL	R L FAUSS BUILDERS INC	WHOM IT MAY CONCERN	OF 96-01894	36	14	10	6B2A & 18B
****	****	**pp	****	199616453	8/14/1996	ADOT	COMMUNITY CARE OF NEBRASKA INC	HEALTH & RETIREMENT PROP TRUST ETAL	36	14	10		
****	****	**pp	****	199715776	7/25/1997	DOT	COMMUNITY CARE OF NE INC	IHS FINANCIAL HOLDINGS INC ETAL	36	14	10		
****	****	**pp	****	199722345	10/6/1997	DOT	COMMUNITY CARE OF NEBRASKA INC	HEALTH RETIREMENT PROP TRUST ETAL	36	14	10	6B2A/18B	
****	****	**pp	****	199912657	4/28/1999	UCCC	HRPT PROPERTIES	COMMUNITY CARE OF	RE 93-33254	36	14	10	TXLTS 6B2A & 18B

							TRUST	AMERICA GRETNA ETAL					
****	****	**pp	****	199912658	4/28/1999	UCCC	HRPT PROPERTIES TRUST	COMMUNITY CARE OF AMERICA GRETNA ETAL	RE 93-33256	36	14	10	TXLTS 6B2A & 18B
nop													
****	****	**pp	****	199912659	4/28/1999	UCCC	HRPT PROPERTIES TRUST	COMMUNITY CARE OF AMERICA GRETNA ETAL	RE 93-33255	36	14	10	TXLTS 6B2A & 18B
****	****	**pp	****	199931299	10/7/1999	AM	HRPT PROPERTIES TRUST	SPTIHS PROPERTIES TRUST	OF 93-33253	36	14	10	
****	****	**pp	****	199931300	10/7/1999	UCCA	HRPT PROPERTIES TRUST	SPTIHS PROPERTIES TRUST	OF 99-12659 PT TL6B2 & TL18B	36	14	10	
****	****	**pp	****	199931301	10/7/1999	UCCA	HRPT PROPERTIES TRUST	SPTIHS PROPERTIES TRUST	OF 99-12657 PT TL 6B2 & TL 18B	36	14	10	
****	****	**pp	****	199931302	10/7/1999	UCCA	HRPT PROPERTIES TRUST	SPTIHS PROPERTIES TRUST	OF 99-12658 PT TL6B2 & TL 18B	36	14	10	
****	****	**pp	**p*	200008008	4/7/2000	WD	GOTTSCH BRETT A TR	GOTTSCH FAMILY FARMS		36	14	10	
****	****	**pp	**p*	200008009	4/7/2000	WD	GOTTSCH EN TERPRISES	GOTTSCH BRETT A TR		36	14	10	
****	****	**pp	****	200017526	7/21/2000	QCD	COMMUNITY CARE OF NE INC	SHOPCO NE LLC	BANKRUPTCY ATTACHED	36	14	10	
****	****	**p*	****	200112276	5/3/2001	WD	GRETNA PUBLIC SCHOOLS CORP	NE DEPT OF ROADS	SEE INST FOR PART RESOLUTION ATTACHED	36	14	10	PT TL 18A1
****	****	**pp*	****	200124606	8/6/2001	WD	SHAMROCK TRUCKING SVCS	LYMAN RICHEY CORP		36	14	10	DIA2 & 19
****	****	**pp*	****	200124608	8/6/2001	QCD	SHAMROCK TRUCKING SVCS	LYMAN RICHEY CORP		36	14	10	
****	****	**pp	****	200126486	8/20/2001	WD	GOTTSCH FAMILY FARMS	NE DEPT OF ROADS		36	14	10	
****	****	**pp	****	200213320	4/11/2002	WD	SHOPCO NE LLC	NE DEPT OF ROADS		36	14	10	PT TL 18B & 6B2A
****	****	**pp	****	200213321	4/11/2002	PDOR	FIRST AMERICAN TITLE INS CO	COMMUNITY CARE OF NEBRASKA	OF 93-33253	36	14	10	PT TL 18B & 6B2A

							TR	INC					
****	****	**pp	****	200216578	5/3/2002	WD	FIVE STAR QUALITY CARE NE	SPTIHS PROPERTIES TRUST	36	14	10	TL 6B2A TL 18B	
nop													
****	****	**p*	****	200310972	3/3/2003	EASE	GRETNA PUBLIC SCHOOL DISTRICT	GRETNA CITY OF	36	14	10	TL 18A1	
****	****	**pp	****	200342380	7/30/2003	DOT	BOCKMAN JEFFREY W ETAL	U S BANK NATL ASSN ETAL	36	14	10	TXLTS 8 & 9	
****	****	**pp	****	200415323	4/29/2004	WD	GOTTSCH FAMILY FARMS	STANDING STONE LLC	36	14	10	tl 18A2 & 6A1A	
****	****	**pp	****	200415324	4/29/2004	DOT	STANDING STONE LLC	NEBRASKA STATE BANK OF OMAHA ETAL	36	14	10	TL 18A2 & 6A1A	
****	****	**pp	****	200415325	4/29/2004	NOC	STANDING STONE LLC	WHOM IT MAY CONCERN	DURATION 12 MONTHS	36	14	10	TL 18A2 & 6A1A
****	****	**pp	****	200428383	7/26/2004	SID	SID #251	WHOM IT MAY CONCERN	36	14	10	TL 18A2 TL6B1 TL 6A1	
****	****	**pp	****	200433274	8/27/2004	AM	STANDING STONE LLC	MID CITY BANK	36	14	10	TL 18A2 & 6A1A	
****	****	**pp	****	200441256	10/27/2004	PLAT	STANDING STONE LLC ETAL	WHOM IT MAY CONCERN	REPLAT PT SW1/4 36-14-10 & PT NW1/4 1-13-10 & OL1 GRINPAI NKA LTS 1-112 & OL A-C STANDING STONE	36	14	10	TXLTS 6A1 6B1 18A2
****	****	**pp	****	200521725	6/29/2005	UCC	FIVE STAR QUALITY CARE NE LLC	ELLCOTT CITY LAND I LLC	SEE INST FOR ADDITIONAL SECURED PARTIES	36	14	10	TL 6B2A & 18B
****	****	**p*	****	200636527	10/25/2006	DEED	LYMAN RICHEY CORP	GRETNA CITY OF	36	14	10	PTXLT 19	
****	****	**p*	****	200636528	10/25/2006	DEED	LYMAN RICHEY CORP	GRETNA CITY OF	36	14	10	PTXLT 19	
****	****	**pp	****	200929599	9/9/2009	ROW	SCHOOL DISTRICT 37	GRETNA CITY OF	36	14	10	TXLT 6B2B	
****	****	**pp	****	201013634	6/1/2010	UCCC	FIVE STAR QUALITY	SPTIHS PROPERTIES	2005-21725	36	14	10	TXLTS 6B2 & 18B

							CARE NE LLC	TRUST						
****	****	**pp	****	201215668	5/29/2012	ST	U S BANK NA	U S BANK NA TR	2003-42380	36	14	10	TXLTS 8 & 9	
****	****	**pp	****	201215669	5/29/2012	DOR	U S BANK NA TR	BOCKMAN JEFFREY W ETAL	2003-42380	36	14	10	TXLTS 8 & 9	
****	****	**pp	****	201236944	11/27/2012	DOT	BOCKMAN JEFFREY W ETAL	FIRST NATL BANK OF OMAHA ETAL		36	14	10	TXLTS 8 & 9	
****	****	*pp*	****	201325220	8/7/2013	EASE	UNITED STATES DISTRICT COURT ETAL	QWEST COMMUNICATION S INTL INC ETAL	4:11 CV 3211 AKA GR LTS 2-4 BLK 3 SL5 & GR LTS 2-9 BLK 3 SL3	36	14	10	TXLT D	
****	****	**pp	****	201510497	5/11/2015	DOR	FIRST AMERICAN TITLE INS CO TR	COMMUNITY CARE OF NE INC	1997-15776	36	14	10	PT TXLT 6B2 & TXLTS 18B & 6B2A	
****	****	**pp	****	201515027	6/25/2015	UCCC	SPTIHS PROPERTIES TRUST ETAL	FIVE STAR QUALITY CARE NE LLC	2005-21725 CHECK METES & BOUNDS FOR TXLT 18B	36	14	10	TXLTS 6B2A & 18B	
****	****	**pp	****	201721182	9/1/2017	DOR	FIRST NATL BANK OF OMAHA TR	BOCKMAN JEFFREY W ETAL	2012-36944	36	14	10	TXLT 8 & 9	
****	****	**pp	****	201724031	10/3/2017	AGR	SARPY COUNTY SCHOOL DISTRICT #37	GRETNA CITY OF		36	14	10	TXLT 6B2B & 18A1	
****	****	*pp	PPP*	201729596	12/7/2017	CERT	GRETNA CITY OF	WHOM IT MAY CONCERN	ORDINANCE 2004	36	14	10		