

BK 2082 PG 101



DEED 1998001619

REC

FEB 11 2 04 PM '98

RICHARD H. TAKECHI
REGISTER OF DEEDS
DOUGLAS COUNTY, NE

**THIS PAGE INCLUDED FOR INDEXING
PAGE DOWN FOR BALANCE OF INSTRUMENT**

011619 47-30724
FEE 39.00 FB 01-60000 old
BKP 1-14-92 C/O COMP MB
DEL SCAN dc FV

PINK INDUSTRIAL PARK

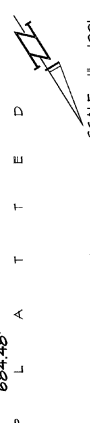
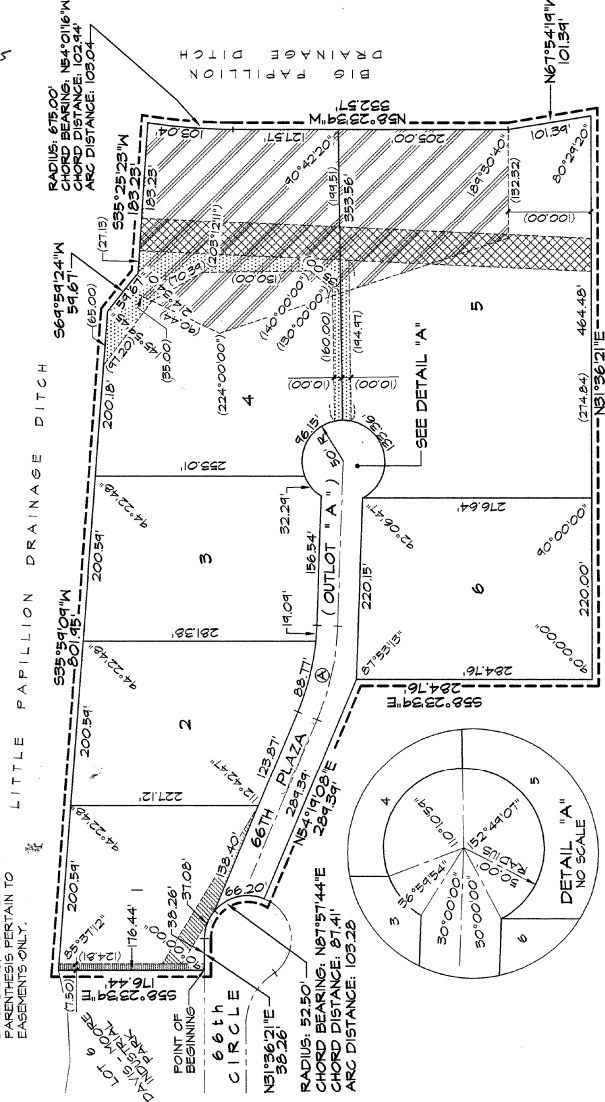
A CLUSTER SUBDIVISION

LOTS 1 THRU 6, INCLUSIVE, AND OUTLOT "A"

BEING A FLATTING OF PART OF THE EAST 1/2 OF THE SW 1/4 OF SECTION 1, TIAN RIDE OF THE 6th P.M., DOUGLAS COUNTY, NEBRASKA, TOGETHER WITH PART OF THE ABANDONED MISSOURI PACIFIC RAILROAD RIGHT-OF-WAY LYING WITHIN SAID EAST 1/2.

CENTERLINE CURVE "A"
 RADIUS: 675.00'
 CHORD BEARING: N54°01'16"W
 CHORD DISTANCE: 1023.44'
 TANGENT: 516.02' | ARC: 116.25'

NOTE
 DIMENSIONS AND ANGLES IN PARENTHESES PERTAIN TO EASEMENTS ONLY.

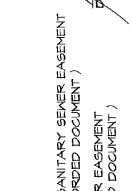


APPROVAL OF OMAHA CITY COUNCIL
 THIS FLAT OF PINK INDUSTRIAL PARK WAS APPROVED AND ACCEPTED BY THE OMAHA CITY COUNCIL ON THIS 27th DAY OF February, 1991.

David ...
 CLERK

REVIEW BY DOUGLAS COUNTY ENGINEER
 THIS FLAT OF PINK INDUSTRIAL PARK WAS REVIEWED BY THE DOUGLAS COUNTY ENGINEER'S OFFICE THIS 9th DAY OF February, 1991.

John ...
 COUNTY ENGINEER



- 18 FOOT WIDE SANITARY SEWER EASEMENT (SEE RECORDED DOCUMENT)
- SANITARY SEWER EASEMENT (SEE RECORDED DOCUMENT)
- STORM SEWER AND DRAINAGE EASEMENT (SEE RECORDED DOCUMENT)
- 40' WIDE SANITARY SEWER EASEMENT (SEE RECORDED DOCUMENT)
- EASEMENT FOR PAVILION GREEK AND PAVILION DRIVEWAY, AS SHOWN AT PAGE 226 OF THE DOUGLAS COUNTY RECORDS.

APPROVAL OF CITY PLANNING BOARD
 THIS FLAT OF PINK INDUSTRIAL PARK WAS APPROVED BY THE CITY PLANNING BOARD OF THE CITY OF OMAHA THIS 31st DAY OF February, 1991.

Richard ...
 CHAIRMAN

APPROVAL OF CITY ENGINEER
 I HEREBY APPROVE THIS FLAT OF PINK INDUSTRIAL PARK ON THIS 5th DAY OF February, 1991.

John ...
 CITY ENGINEER

COUNTY TREASURER'S CERTIFICATE
 I DO NOT OWE ANY SPECIAL TAXES, DIE OR DELINQUENT AGAINST THE PROPERTY DESCRIBED IN THE SURVEYOR'S CERTIFICATE AND EMBRACED IN THIS FLAT, AS SHOWN BY THE RECORDS OF THIS OFFICE, THIS 27th DAY OF February, 1991.

John ...
 COUNTY TREASURER

APPROVAL OF CITY ENGINEER
 I HEREBY CERTIFY THAT ADEQUATE PROVISIONS HAVE BEEN MADE FOR COMPLIANCE WITH CHAPTER 55 OF THE OMAHA MUNICIPAL CODE.

February 9, 1991
 DATE
John ...
 CITY ENGINEER

APPROVAL OF CITY ENGINEER
 I HEREBY CERTIFY THAT I HAVE MADE A BOUNDARY SURVEY OF THE SUBDIVISION HEREIN DESCRIBED AND THAT PERMANENT MARKERS HAVE BEEN FOUND OR SET AT THE CORNERS OF THE LOTS AND THAT PERMANENT MARKERS WILL BE SET AT THE LOT CORNERS TO INSURE THAT PERMANENT MARKERS WILL BE SET AT THE CORNERS OF THE LOTS AND THAT PERMANENT MARKERS WILL BE SET AT THE CORNERS OF THE LOTS AND THAT PERMANENT MARKERS WILL BE SET AT THE CORNERS OF THE LOTS.

DAVID H. NEEF
 NEBRASKA RLS 475

DEDICATION
 I HEREBY CERTIFY THAT I HAVE MADE A BOUNDARY SURVEY OF THE SUBDIVISION HEREIN DESCRIBED AND THAT PERMANENT MARKERS HAVE BEEN FOUND OR SET AT THE CORNERS OF THE LOTS AND THAT PERMANENT MARKERS WILL BE SET AT THE LOT CORNERS TO INSURE THAT PERMANENT MARKERS WILL BE SET AT THE CORNERS OF THE LOTS.

DAVID H. NEEF
 NEBRASKA RLS 475

SURVEYOR'S CERTIFICATION
 I HEREBY CERTIFY THAT I HAVE MADE A BOUNDARY SURVEY OF THE SUBDIVISION HEREIN DESCRIBED AND THAT PERMANENT MARKERS HAVE BEEN FOUND OR SET AT THE CORNERS OF THE LOTS AND THAT PERMANENT MARKERS WILL BE SET AT THE LOT CORNERS TO INSURE THAT PERMANENT MARKERS WILL BE SET AT THE CORNERS OF THE LOTS.

DAVID H. NEEF
 NEBRASKA RLS 475

SCALE: AS SHOWN

DATE: JAN 2, 1991

CHECKED BY: DHM

DRAWN BY: JAZ

REVISIONS:

FINAL PLAT

PINK INDUSTRIAL PARK

10258 OLD MILL ROAD
 OMAHA, NE 68134
 (402) 390-8660

THOMPSON ENGINEERS & SURVEYORS

1042-101

AG 42501ADPWS