



2094 446 DEED



05011 58 445-470

RICHARD W. TAKECHI  
REGISTER OF DEEDS  
DOUGLAS COUNTY, NE

98 JUL -8 PM 3:28

RECEIVED

THIS PAGE INCLUDED FOR INDEXING  
PAGE DOWN FOR BALANCE OF INSTRUMENT

NEBRASKA DOCUMENTARY  
STAMP TAX  
Date 7-8-98  
\$ 244.87

9011 y MI-00502 (new)  
01-60000 old

FEE 00 FB \_\_\_\_\_  
BKP 55/15-11 C/C \_\_\_\_\_ COMP MB  
DEL PN SCAN dc FY \_\_\_\_\_





# ALTECH BUSINESS PARK

## A CLUSTER SUBDIVISION

LOTS 1 THRU 50, INCLUSIVE & OUTLOTS A, B, C AND D  
 BEING A PLATING OF PART OF THE EAST 1/2 OF SECTION 35, T15N, R11E OF THE 8TH PM, DOUGLAS COUNTY, NEBRASKA,  
 LYING SOUTHWESTERLY OF THE MINNAPACIFIC RAILROAD COMPANY RIGHT-OF-WAY TOGETHER WITH PART OF THE NW 1/4  
 OF SAID SECTION 35; TOGETHER WITH PART OF THE NE 1/4 OF THE SW 1/4 OF SAID SECTION 35.

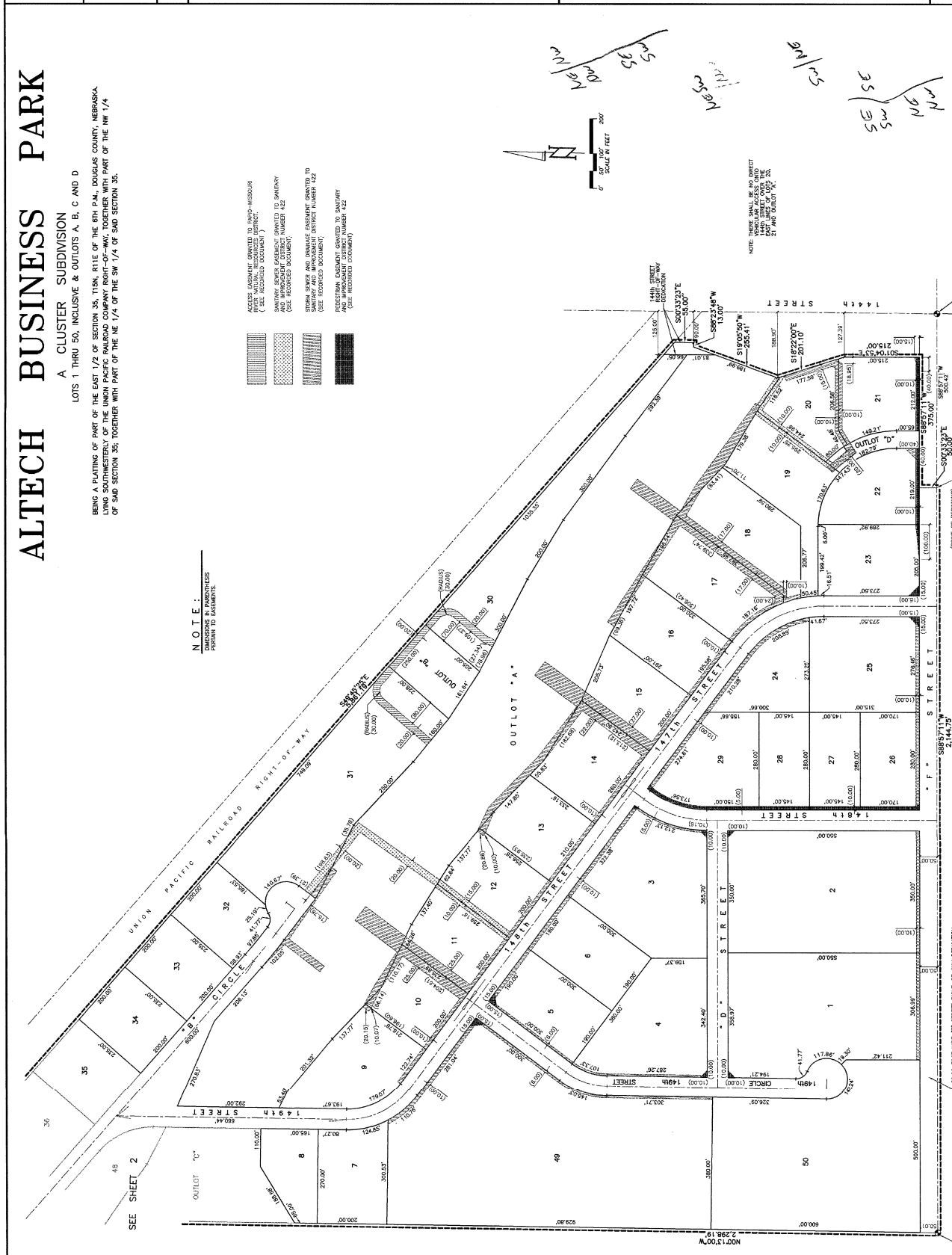
**NOTE:**  
 DIMENSIONS IN PARENTHESES  
 REFER TO CENTERLINE

- ACCESS EASEMENT GRANTED TO SMOG-ABSORBING WATER TREATMENT PLANT (SEE RECORDED DOCUMENT)
- ACCESS EASEMENT GRANTED TO 144th STREET (SEE RECORDED DOCUMENT)
- STORM SEWER AND DRAINAGE EASEMENT GRANTED TO SANITARY AND IMPROVEMENT DISTRICT NUMBER 22 (SEE RECORDED DOCUMENT)
- STORM SEWER AND DRAINAGE EASEMENT GRANTED TO SANITARY AND IMPROVEMENT DISTRICT NUMBER 22 (SEE RECORDED DOCUMENT)
- PROVISIONAL EASEMENT GRANTED TO SANITARY AND IMPROVEMENT DISTRICT NUMBER 22 (SEE RECORDED DOCUMENT)

**R<sup>2</sup>**  
**THOMPSON, DRESSSEN & DORNER, INC.**  
 Consulting Engineers & Land Surveyors  
 10836 OLD MILL ROAD  
 OMAHA, NE 68154  
 (402) 330 - 8860

423-122

SHEET 3 of 4



NOTE: THERE SHALL BE NO DIRECT ACCESS TO THE 1/2 SECTION 35, T15N, R11E OF THE 8TH PM, DOUGLAS COUNTY, NEBRASKA, (COMMERCIAL FRONT)

NOTE: THERE SHALL BE NO DIRECT ACCESS TO THE 1/2 SECTION 35, T15N, R11E OF THE 8TH PM, DOUGLAS COUNTY, NEBRASKA, (COMMERCIAL FRONT)

650.00' FOOT WIDE STREET RIGHT-OF-WAY EDUCATION

BY CORNER OF THE SE 1/4 OF SECTION 35, T15N, R11E OF THE 8TH PM, DOUGLAS COUNTY, NEBRASKA.

U N P L A T T E R

# ALTECH BUSINESS PARK

LOTS 1 THRU 50, INCLUSIVE & OUTLOTS A, B, C AND D  
 BEING A PLATING OF PART OF THE EAST 1/2 OF SECTION 35, T15N, R11E OF THE 6TH P.M., DOUGLASS COUNTY, NEBRASKA,  
 LYING SOUTHWESTERLY OF THE UNION PACIFIC RAILROAD COMPANY RIGHT-OF-WAY, TOGETHER WITH PART OF THE NW 1/4 OF  
 SAID SECTION 35, TOGETHER WITH PART OF THE NE 1/4 OF THE SW 1/4 OF SAID SECTION 35.

DATE	AS SHOWN
DATE	JAN. 22, 1998
BY	RUB
CHKD BY	CHN
APPROVED	

ALTECH BUSINESS PARK

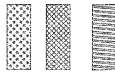
FINAL PLAT

**R<sup>2</sup> THOMPSON, DRESSSEN & DORNER, INC.**  
 Consulting Engineers & Land Surveyors  
 10826 OLD MILL ROAD  
 OMAHA, NE 68134  
 (402) 330 - 8869

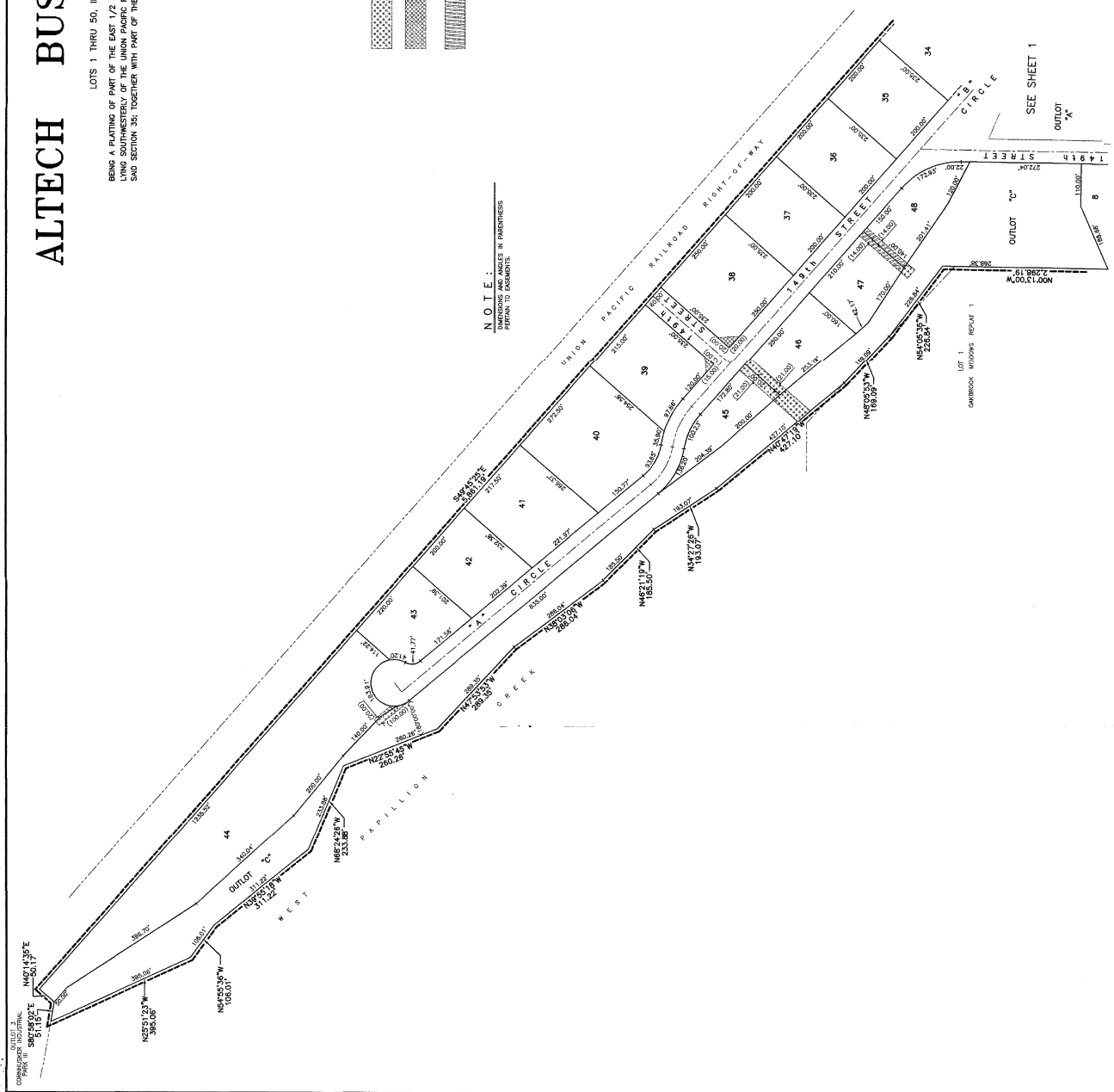
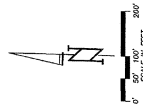
423-122

SHEET 4 of 4

- STORM SEWER AND FINANCE EASEMENT GRANTED TO THE CITY OF OMAHA (SEE RECORDED DOCUMENT)
- CELESTIAL EASEMENT GRANTED TO THE CITY OF OMAHA (SEE RECORDED DOCUMENT)
- STORM SEWER AND FINANCE EASEMENT GRANTED TO SAUKNET AND IMPROVEMENT DISTRICT NUMBER 422 (SEE RECORDED DOCUMENT)



**NOTE:**  
 DIMENSIONS AND ANGLES IN PARENTHESES  
 Pertain to Easements.



AKS3125K.DWG