

**PARKER'S FIRST ADDITION
TO THE
CITY OF CRETE, NEBRASKA
PLAT**

SCALE 1"=100'



STATEMENT AND DEDICATION

The foregoing subdivision of a part of the west one-half (W 1/2) of Section 35 Township 8 North, Range 4 East of the 6th Principal Meridian, in Saline County, Nebraska, as appears on this plat and described as follows:

Beginning at a point sixty four (64) feet north and six hundred thirty seven (637) feet east of the northeast corner of lot one (1), block two hundred forty three (243) in the Original Town of Crete, Nebraska; thence north one hundred fifty (150) feet; thence east seven hundred thirty three and fifty two hundredths (733.52) feet; thence north four hundred eighty three and eighty six hundredths (483.86) feet; thence east three hundred forty three and fifty two hundredths (343.52) feet; thence south six hundred ninety three and eighty six hundredths (693.86) feet; thence west one thousand fifty five and four hundredths (1055.04) feet; thence north sixty (60) feet; thence west twenty two (22) feet to the point of beginning, and the platting of the same as "PARKER'S FIRST ADDITION to the City of Crete, Nebraska" is made with the free consent and in accordance with the desire of the undersigned owners and proprietors. The streets shown hereon are dedicated to the public.

Witness our hands this 13th day of May, 1961.

PARKER AND JACOBSEN LUMBER COMPANY, a Corporation

Attest Paul M. Parker by Paul M. Parker
Secretary of Parker & Jacobsen Lumber Co. President of Parker & Jacobsen Lumber Co.

Attest J. E. Callett by Donald M. Typer
Secretary of Doane College President of Doane College

CORPORATE ACKNOWLEDGEMENTS

State of Nebraska } ss. On this 13th day of May, 1961, before me, the undersigned, a Notary Public, duly commissioned, qualified for and residing in said County, personally came Paul M. Parker, President of Parker and Jacobsen Lumber Company, a corporation, and Donald M. Typer, President of Doane College, a corporation, to me known to be such Presidents and the identical persons who signed the within STATEMENT AND DEDICATION and, respectively, they acknowledged the execution thereof to be their voluntary act and deed as such officer and the voluntary act and deed of such corporation and that its corporate seal was thereunto affixed by its authority.

Witness my hand and Notarial Seal at the City of Crete, in said County, the day and year last above written.

My commission expires Oct. 10, 1963
Gerald J. Hallstead
Notary Public

SURVEYOR'S CERTIFICATE

I hereby certify that I have surveyed and staked "PARKER'S FIRST ADDITION to the City of Crete, Nebraska" as the same appears on this plat. Iron pipe markers are set at all corners marked thus: Signed this 4th day of May, 1961.

Clifford S. Allen
L.S. 78 - Neb.

APPROVAL

Approved and accepted by the City Council of the City of Crete, Saline County, Nebraska by Ordinance No. 404 passed the 13 day of May, 1961.

Gerald J. Hallstead
City Clerk

INDIVIDUAL ACKNOWLEDGEMENTS

State of Nebraska } ss. On this 13th day of May, 1961, before me, the undersigned, a Notary Public, duly commissioned, qualified for and residing in said County, personally came Elvin C. Schultz and Dorothy M. Schultz, husband and wife; Leonard J. Sinkule and Betty Sinkule, husband and wife; William F. Schultz and Nora Schultz, husband and wife; and Edna E. Kruse, a widow, to me personally known to be the identical persons who signed the within STATEMENT AND DEDICATION and they acknowledged the execution thereof to be their voluntary act and deed.

Witness my hand and Notarial Seal at the City of Crete, Saline County, the day and year last above written.

My commission expires Oct. 10, 1963
Gerald J. Hallstead
Notary Public

(See Ordinance No. 404 on p. 200 of the Plat Book No. 24, Page 400)

Notary Seal: GERALD J. HALLSTEAD, Notary Public, Saline County, Nebraska. Commission Expires Oct. 10, 1963.

Notary Seal: CLIFFORD S. ALLEN, Surveyor, Saline County, Nebraska. Commission Expires Oct. 10, 1963.

Notary Seal: J. E. CALLETT, Notary Public, Saline County, Nebraska. Commission Expires Oct. 10, 1963.

Notary Seal: DONALD M. TYPER, Notary Public, Saline County, Nebraska. Commission Expires Oct. 10, 1963.

Notary Seal: EDNA E. KRUSE, Notary Public, Saline County, Nebraska. Commission Expires Oct. 10, 1963.

Notary Seal: WILLIAM F. SCHULTZ, Notary Public, Saline County, Nebraska. Commission Expires Oct. 10, 1963.

Notary Seal: NORA SCHULTZ, Notary Public, Saline County, Nebraska. Commission Expires Oct. 10, 1963.

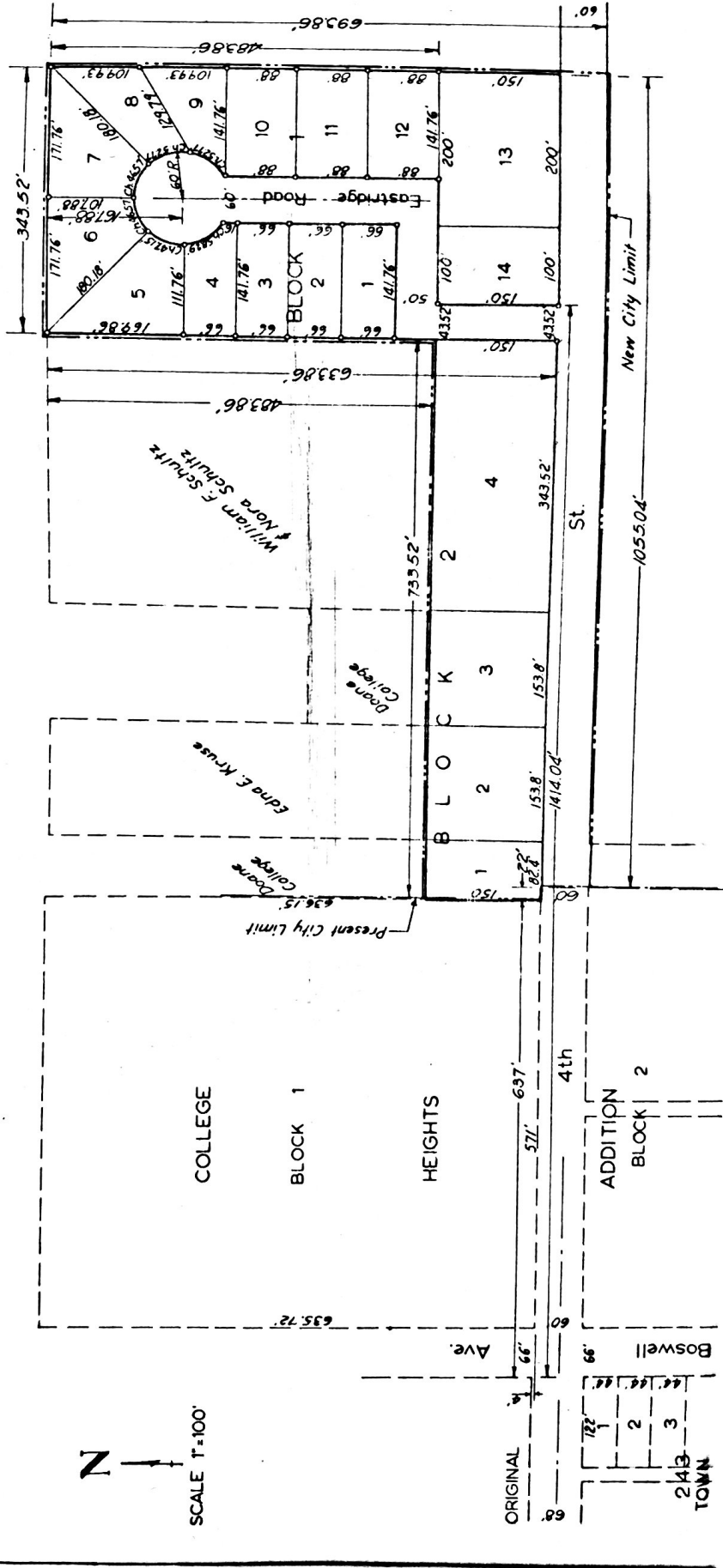
Notary Seal: BETTY SINKULE, Notary Public, Saline County, Nebraska. Commission Expires Oct. 10, 1963.

Notary Seal: LEONARD J. SINKULE, Notary Public, Saline County, Nebraska. Commission Expires Oct. 10, 1963.

Notary Seal: ELVIN C. SCHULTZ, Notary Public, Saline County, Nebraska. Commission Expires Oct. 10, 1963.

Notary Seal: DOROTHY M. SCHULTZ, Notary Public, Saline County, Nebraska. Commission Expires Oct. 10, 1963.

PARKER'S FIRST ADDITION
TO THE
CITY OF CRETE, NEBRASKA
PLAT



CORPORATE ACKNOWLEDGEMENTS

State of Nebraska } s.s. On this 19th day of May 1961, before me,
 Saline County } the undersigned, a Notary Public, duly commissioned, qualified for
 and residing in said County, personally came Paul M. Parker, Pres-
 ident of Parker and Jacobsen Lumber Company, a corporation,
 and Donald M. Typer, President of Doane College, a corp-
 oration, to me known to be such Presidents and the identical
 persons who signed the within STATEMENT AND DEDICATION, and,
 respectively, they acknowledged the execution thereof to be their
 voluntary act and deed as such officer and the voluntary act and deed
 of such corporation and that its corporate seal was thereto affixed
 by its authority.

Witness my hand and Notarial Seal at the City of Crete, in
 said County, the day and year last above written.

My Commission expires Oct 10, 1963 *Gerald J. Hallstead*
 Notary Public



SURVEYOR'S CERTIFICATE

I hereby certify that I have surveyed and staked "PARKER'S FIRST
 ADDITION to the City of Crete, Nebraska" as the same appears on this
 plat and iron pipe markers are set at all corners marked thus o.
 Signed this 4th day of May, 1961

Clifford A. [Signature]
 L.S. 78 - Nebr.



APPROVAL

Approved and accepted by the City Council of the City of Crete,
 Saline County, Nebraska by Ordinance No. 404 passed the
10th day of May 1961

Gerald [Signature]
 City Clerk



STATEMENT AND DEDICATION

The foregoing subdivision of a part of the west one-half (W 1/2) of Section 35, Township 8 North, Range 4 East of the 6th Principal Meridian, in Saline County, Nebraska "as appears on this plat" and described as follows:

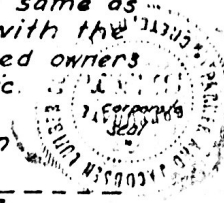
Beginning at a point sixty four (64) feet north and six hundred thirty seven (637) feet east of the northeast corner of lot one (1), block two hundred forty three (243) in the Original Town of Crete, Nebraska; thence north one hundred fifty (150) feet; thence east seven hundred thirty three and fifty two hundredths (733.52) feet; thence north four hundred eighty three and eighty six hundredths (483.86) feet; thence east three hundred forty three and fifty two hundredths (343.52) feet; thence south six hundred ninety three and eighty six hundredths (693.86) feet; thence west one thousand fifty five and four hundredths (1055.04) feet; thence north sixty (60) feet; thence west twenty two (22) feet to the point of beginning, and the platting of the same as "PARKER'S FIRST ADDITION to the City of Crete, Nebraska" is made with the free consent and in accordance with the desire of the undersigned owners and proprietors. The streets shown hereon are dedicated to the public.

Witness our hands this 13th day of May 1961.

PARKER AND JACOBSEN LUMBER COMPANY, a Corporation

Attest Melvin E. Parker
 Secy. Treas. of Parker & Jacobsen Lumber Co.

by Paul M. Parker
 President of Parker & Jacobsen Lumber Co.



Attest J. E. Pallett
 Secretary of Doane College

DOANE COLLEGE, a Corporation

by Ronald W. Lippert
 President of Doane College

Corporate Seal

INDIVIDUAL ACKNOWLEDGEMENTS

State of Nebraska }
 Saline County } s.s. On this 13th day of May, 1961, before me, the undersigned, a Notary Public duly commissioned, qualified for and residing in said County, personally came Elvin C. Schultz and Dorothy M. Schultz, husband and wife; Leonard J. Sinkule and Betty Sinkule, husband and wife; William F. Schultz and Nora Schultz, husband and wife; and Edna E. Kruse, a widow, to me personally known to be the identical persons who signed the within STATEMENT AND DEDICATION, and they acknowledged the execution thereof to be their voluntary act and deed.

Elvin C. Schultz
Dorothy M. Schultz
Leonard Sinkule
Betty Sinkule
William F. Schultz
Nora Schultz
Edna E. Kruse

THE STATE OF NEBRASKA }
 SALINE COUNTY }

Entered in numerical index and filed for record in the County Clerk's Office of said County the 22nd day of May 1961 at 4 o'clock P.M. and recorded in Book 104 of Deeds on page 77.

Witness my hand and Notarial Seal at the City of Crete, Saline County, the day and year last above written.
 My commission expires Oct. 10, 1963.

Gerald J. Hallstead
 Notary Public

(See Ordinance No. 4 of 1961, see Misc. 24 Page 400)