



2155 003 DEED



08124 00 003-003

Nebr Doc
Stamp Tax

6.1500

Date

\$ 48.00

By LFO

RICHARD W. TAYLOR
REGISTER OF DEEDS
DOUGLAS COUNTY, NE

00 JUN 15 PM 3:37

RECEIVED

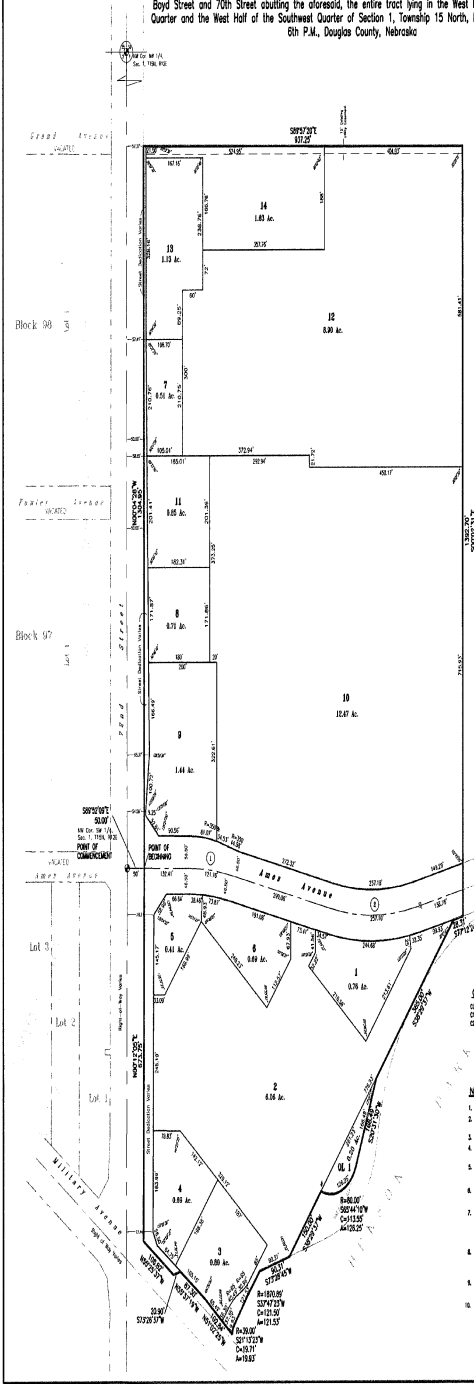
**THIS PAGE INCLUDED FOR INDEXING
PAGE DOWN FOR BALANCE OF INSTRUMENT**

Del 7
 25

FEE	FB	NEW # 43-03445
	DEED # 43-07880	
BRP	CO	43-03445
	COMP	
DEL	SCAN	FV

BENSON PARK PLAZA

Lots 1 through 14, inclusive, AND Outlot 1, being a replatting of part of Lot 2, BLOCK 88; AND Lot 2, BLOCK 89; AND Lot 2, BLOCK 90; AND Lot 2, EXCEPT that part taken for road right of way and Lot 1, BLOCK 92; AND Lots 2, 3 and 4, EXCEPT that part taken for road rights of way, and Lot 1, BLOCK 93; AND part of Lot 2, BLOCK 94; all in the ORIGINAL CITY OF BENSON, now a part of the City of Omaha, Nebraska, as surveyed, plotted and recorded in Douglas County, Nebraska, AND ALSO Lots 1 and 2, BENSON REPLAT II, TOGETHER WITH Grand Avenue lying north of and abutting the aforesaid, a subdivision, as surveyed, plotted and recorded in Douglas County, Nebraska, TOGETHER WITH Vested Grand Avenue, Fowler Avenue, Ames Avenue, Boyd Street and 70th Street abutting the aforesaid, the entire tract lying in the West Half of the Northwest Quarter and the West Half of the Southwest Quarter of Section 1, Township 15 North, Range 12 East of the 6th P.M., Douglas County, Nebraska



USE SURVEY CERTIFICATE

I HEREBY CERTIFY that I have made a boundary survey of the subdivision herein and that permanent monuments have been placed at all corners, single points and end of lines on the boundary of the lot and that a deed has been prepared with the City of Omaha, Nebraska, in order to assure that permanent monuments will be placed at all corners, single points and end of lines of all lots and that the subdivision is shown on the original plan filed in the office of the County Clerk of Douglas County, Nebraska, on the 15th day of January, 1980, and that I am a duly sworn and duly qualified surveyor in the State of Nebraska. I have made and approved the following plat and survey of the original plan filed in the office of the County Clerk of Douglas County, Nebraska, on the 15th day of January, 1980, and that I am a duly sworn and duly qualified surveyor in the State of Nebraska.

Date: Jan 4, 1980
 Surveyor:
 Seal:

CONTRACT

I, the undersigned, hereby certify that the above described plat and survey were made and approved by me, the undersigned, on the 15th day of January, 1980, and that I am a duly sworn and duly qualified surveyor in the State of Nebraska. I have made and approved the following plat and survey of the original plan filed in the office of the County Clerk of Douglas County, Nebraska, on the 15th day of January, 1980, and that I am a duly sworn and duly qualified surveyor in the State of Nebraska.

ENDORSEMENT

I, the undersigned, hereby certify that the above described plat and survey were made and approved by me, the undersigned, on the 15th day of January, 1980, and that I am a duly sworn and duly qualified surveyor in the State of Nebraska. I have made and approved the following plat and survey of the original plan filed in the office of the County Clerk of Douglas County, Nebraska, on the 15th day of January, 1980, and that I am a duly sworn and duly qualified surveyor in the State of Nebraska.

ENDORSEMENT

I, the undersigned, hereby certify that the above described plat and survey were made and approved by me, the undersigned, on the 15th day of January, 1980, and that I am a duly sworn and duly qualified surveyor in the State of Nebraska. I have made and approved the following plat and survey of the original plan filed in the office of the County Clerk of Douglas County, Nebraska, on the 15th day of January, 1980, and that I am a duly sworn and duly qualified surveyor in the State of Nebraska.

ENDORSEMENT

I, the undersigned, hereby certify that the above described plat and survey were made and approved by me, the undersigned, on the 15th day of January, 1980, and that I am a duly sworn and duly qualified surveyor in the State of Nebraska. I have made and approved the following plat and survey of the original plan filed in the office of the County Clerk of Douglas County, Nebraska, on the 15th day of January, 1980, and that I am a duly sworn and duly qualified surveyor in the State of Nebraska.

CURVE	BEARINGS	ARC LENGTH	CHORD LENGTH	BEAV. ANGLE
1	S81°20'00"W	120.00'	115.50'	118°20'00"
2	S81°20'00"W	120.00'	115.50'	118°20'00"

- NOTES**
- ALL DIMENSIONS SHOWN IN DECA FEET.
 - ALL DIMENSIONS SHOWN ALONG CURVES ARE NOT DIMENSIONS OF CURVE DIMENSIONS.
 - ALL DIMENSIONS ARE TO BE MAINTAINED THROUGHOUT THE PROJECT.
 - ALL DIMENSIONS ARE TO BE MAINTAINED THROUGHOUT THE PROJECT.
 - ALL DIMENSIONS ARE TO BE MAINTAINED THROUGHOUT THE PROJECT.
 - ALL DIMENSIONS ARE TO BE MAINTAINED THROUGHOUT THE PROJECT.
 - ALL DIMENSIONS ARE TO BE MAINTAINED THROUGHOUT THE PROJECT.
 - ALL DIMENSIONS ARE TO BE MAINTAINED THROUGHOUT THE PROJECT.
 - ALL DIMENSIONS ARE TO BE MAINTAINED THROUGHOUT THE PROJECT.
 - ALL DIMENSIONS ARE TO BE MAINTAINED THROUGHOUT THE PROJECT.
 - ALL DIMENSIONS ARE TO BE MAINTAINED THROUGHOUT THE PROJECT.
 - ALL DIMENSIONS ARE TO BE MAINTAINED THROUGHOUT THE PROJECT.
 - ALL DIMENSIONS ARE TO BE MAINTAINED THROUGHOUT THE PROJECT.
 - ALL DIMENSIONS ARE TO BE MAINTAINED THROUGHOUT THE PROJECT.
 - ALL DIMENSIONS ARE TO BE MAINTAINED THROUGHOUT THE PROJECT.
 - ALL DIMENSIONS ARE TO BE MAINTAINED THROUGHOUT THE PROJECT.

drawn by
 designed by
 reviewed by
 revisions
 0-21-2009-005

part #/name
 0875819701

reference
 none

lamp, r.ynearson & associates, inc.
 1425 S. 12th Street, Omaha, NE 68102
 402-466-8760
 FAX: 402-466-8769

BENSON PARK PLAZA
 DOUGLAS COUNTY, NEBRASKA

JOAN D. WELSON
 COUNTY CLERK OF DOUGLAS COUNTY, NEBRASKA

RECEIVED
 JAN 15 1980

DOUGLAS COUNTY, NEBRASKA

SEAL
 COUNTY CLERK
 DOUGLAS COUNTY, NEBRASKA

RECEIVED
 JAN 15 1980

DOUGLAS COUNTY, NEBRASKA

FINAL
 PLAT

job number-plate
 08758197-003

book
 page

date
 DEC 21, 1999

sheet
 1 of 1