



BK 2242 PG 058-066



DEED 2003 06852

Nebr L Stamp Tax
5-13-03
Date \$ Ex #4
By <i>JDS</i>

WARD H. JAMES  
REGISTER OF DEEDS  
DELAWARE COUNTY, NE

03 MAY 13 AM 9:36

RECEIVED

**THIS PAGE INCLUDED FOR INDEXING  
PAGE DOWN FOR BALANCE OF INSTRUMENT**

*Deed D*

FEE 46.50 FB new - MI - 22273  
old MI - 22271

9 ~~3~~ BKP \_\_\_\_\_ C/O \_\_\_\_\_ COMP \_\_\_\_\_  
 DEL PN SCAN UK FV \_\_\_\_\_

3 BKP Jan 5-13

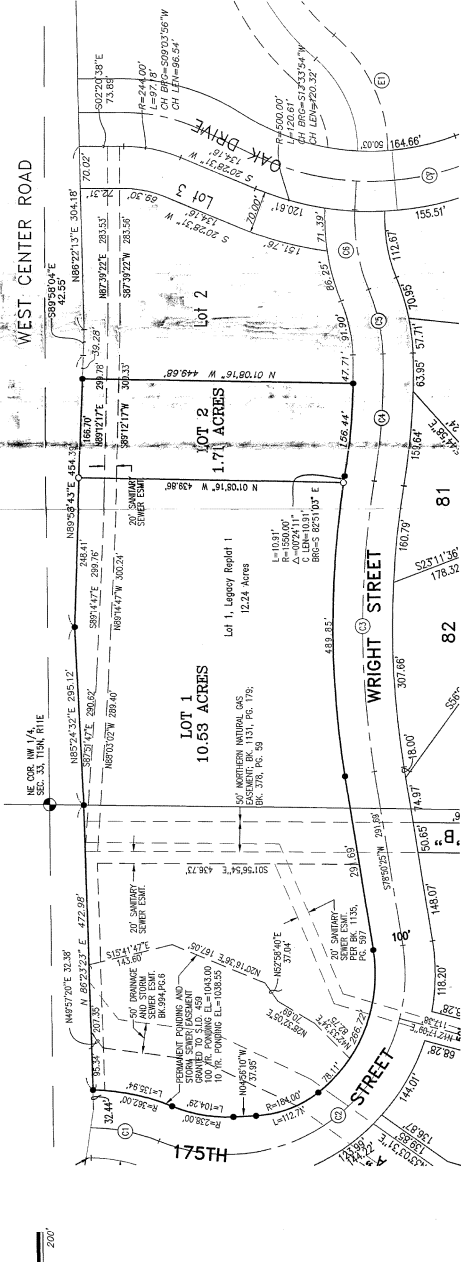
Temp. 12.4:01

5484.

# LEGACY REPLAT 3

(LOTS 1 AND 2, INCLUSIVE)  
BEING A REPLAT OF LOT 1, LEGACY REPLAT 1,  
DOUGLAS COUNTY, NEBRASKA

- NOTES**
1. NO ACCESS WILL BE ALLOWED TO WEST CENTER ROAD FROM LOTS 1 AND 2.
  2. ALL EASEMENTS WILL BE GRANTED TO S.I.D. 459.



**LEGAL DESCRIPTION**  
LOT 1, LEGACY REPLAT 1 A PARTED AND RECORDED SUBDIVISION BEING PART OF THE NW/4 OF SECTION 33, 15TH RANGE OF THE 6TH P.M., DOUGLAS COUNTY, NEBRASKA.

**SURVEYOR'S CERTIFICATE**  
I, CHAD B. WELLS, A REGISTERED LAND SURVEYOR IN THE STATE OF NEBRASKA, HEREBY CERTIFY THAT LEGACY REPLAT 3 WAS SURVEYED ACCORDING TO THE BEST OF MY KNOWLEDGE AND BELIEF.



**S. CURVE DATA**

- (1) R=300.00' L=116.92' CH=489.49292' 116.16
- (2) R=300.00' L=634.34' CH=540.35107' 322.00
- (3) R=1500.00' L=482.50' CH=188503.43' 464.35
- (4) R=1100.00' L=413.87' CH=598115.01' 213.34
- (5) R=300.00' L=110.28' CH=75949.48' 108.86
- (6) R=300.00' L=132.85' CH=77463.51' 131.37

**APPROVAL OF CITY ENGINEER OF OMAHA**  
ALL REQUIRED PUBLIC IMPROVEMENTS HAVE BEEN COMPLETED, REQUESTED AND APPROVED BY THE PUBLIC WORKS DEPARTMENT.

DATED THIS 25<sup>th</sup> DAY OF APRIL 2003  
*Chad B. Wells*  
CITY ENGINEER

**COUNTY TREASURER'S CERTIFICATE**

THIS IS TO CERTIFY THAT THIS MAP REPLICATES THE ORIGINAL RECORDS ON FILE IN THE OFFICE OF THE COUNTY ENGINEER OF DOUGLAS COUNTY, NEBRASKA, AND IS CORRECTLY SHOWN BY THE RECORDS OF THIS OFFICE.

DATED THIS 24<sup>th</sup> DAY OF APRIL 2003  
*Paul J. Paster*  
COUNTY TREASURER

**APPROVAL OF CITY PLANNING DIRECTOR**  
APPROVED AS A SUBDIVISION OF LOT 1, LEGACY REPLAT 3, IN CONFORMANCE WITH SECTION 53-10 (3), OMAHA MUNICIPAL CODE, WITH PLAT REQUIREMENTS WAVED PER SECTION 73-6, HOME RULE CHARTER OF THE CITY OF OMAHA.

DATED THIS 24<sup>th</sup> DAY OF APRIL 2003  
*Chad B. Wells*  
CITY PLANNING DIRECTOR

**DEDICATION**

KNOW ALL MEN BY THESE PRESENTS, THAT WE, THE UNDERSIGNED, HAVE HEREBY DEVOTED AND CONVEYED TO THE PUBLIC OF THE STATE OF NEBRASKA, FOR THE USE AND BENEFIT OF THE PEOPLE OF SAID STATE, THE TRACT OF LAND HEREIN DESCRIBED, TOGETHER WITH ALL THE RIGHTS AND INTERESTS THEREIN, TO BE USED AS A PUBLIC HIGHWAY, AND TO BE KNOWN AS WEST CENTER ROAD, BEING A REPLAT OF LOT 1, LEGACY REPLAT 1, DOUGLAS COUNTY, NEBRASKA, AS SHOWN ON THE PLAT HEREIN, AND AS THE SAID TRACT OF LAND IS NOW BEING USED AS A PUBLIC HIGHWAY, WE HEREBY CERTIFY THAT WE HAVE COMPLIED WITH ALL THE REQUIREMENTS OF SECTION 73-6, HOME RULE CHARTER OF THE CITY OF OMAHA, NEBRASKA, AND WE HEREBY CERTIFY THAT WE HAVE COMPLIED WITH ALL THE REQUIREMENTS OF SECTION 53-10 (3), OMAHA MUNICIPAL CODE, WITH PLAT REQUIREMENTS WAVED PER SECTION 73-6, HOME RULE CHARTER OF THE CITY OF OMAHA, NEBRASKA.

WITNESSED WHEREOF, WE DO HEREBY SET OUR HANDS THIS 14<sup>th</sup> DAY OF APRIL 2003, A.D.

BY: *Tim Wingo*  
TIM WINGO, PRESIDENT  
WINGO, INC., A SOUTH DAKOTA CORPORATION, MANAGER

BY: *Tim Wingo*  
TIM WINGO, PRESIDENT  
HAMILTON DEVELOPMENT CO., L.L.C., A NEBRASKA LIMITED LIABILITY COMPANY, MANAGER

BY: *Tim Wingo*  
TIM WINGO, PRESIDENT  
188 CENTER, L.L.C., A NEBRASKA LIMITED LIABILITY COMPANY, MANAGER

BY: *Tim Wingo*  
TIM WINGO, PRESIDENT  
188 CENTER, L.L.C., A NEBRASKA LIMITED LIABILITY COMPANY, MANAGER

BY: *Kevin Irish*  
KEVIN IRISH, OWNER

**CORPORATIONAL ACKNOWLEDGEMENT**

STATE OF NEBRASKA }  
COUNTY OF DOUGLAS }  
ON THIS 14<sup>th</sup> DAY OF APRIL 2003, I, PAMELLA A. BUCKNER, COUNTY CLERK OF SAID COUNTY, DOUGLAS COUNTY, NEBRASKA, DO HEREBY CERTIFY THAT THE FOREGOING INSTRUMENT HAS BEEN FILED FOR RECORD IN THE OFFICE OF THE COUNTY CLERK OF SAID COUNTY, NEBRASKA, AND THAT THE SAID INSTRUMENT IS CORRECTLY SHOWN BY THE RECORDS OF THIS OFFICE.

BY: *Pamela A. Buckner*  
PAMELLA A. BUCKNER  
COUNTY CLERK

BY COMMISSION EXPIRES ON THE 14<sup>th</sup> DAY OF MAY 2004, A.D.

**CORPORATIONAL ACKNOWLEDGEMENT**

STATE OF NEBRASKA }  
COUNTY OF DOUGLAS }  
ON THIS 14<sup>th</sup> DAY OF APRIL 2003, I, PAMELLA A. BUCKNER, COUNTY CLERK OF SAID COUNTY, DOUGLAS COUNTY, NEBRASKA, DO HEREBY CERTIFY THAT THE FOREGOING INSTRUMENT HAS BEEN FILED FOR RECORD IN THE OFFICE OF THE COUNTY CLERK OF SAID COUNTY, NEBRASKA, AND THAT THE SAID INSTRUMENT IS CORRECTLY SHOWN BY THE RECORDS OF THIS OFFICE.

BY: *Pamela A. Buckner*  
PAMELLA A. BUCKNER  
COUNTY CLERK

BY COMMISSION EXPIRES ON THE 14<sup>th</sup> DAY OF MAY 2004, A.D.

**CORPORATIONAL ACKNOWLEDGEMENT**

STATE OF NEBRASKA }  
COUNTY OF DOUGLAS }  
ON THIS 14<sup>th</sup> DAY OF APRIL 2003, I, PAMELLA A. BUCKNER, COUNTY CLERK OF SAID COUNTY, DOUGLAS COUNTY, NEBRASKA, DO HEREBY CERTIFY THAT THE FOREGOING INSTRUMENT HAS BEEN FILED FOR RECORD IN THE OFFICE OF THE COUNTY CLERK OF SAID COUNTY, NEBRASKA, AND THAT THE SAID INSTRUMENT IS CORRECTLY SHOWN BY THE RECORDS OF THIS OFFICE.

BY: *Pamela A. Buckner*  
PAMELLA A. BUCKNER  
COUNTY CLERK

BY COMMISSION EXPIRES ON THE 14<sup>th</sup> DAY OF MAY 2004, A.D.

MA 4262