

2013-04561

ZAPATA

LOTS 1 AND 2

BEING A PLATTING OF TAX LOT 4A1A1 TOGETHER WITH TAX LOT 4A2 IN THE SW 1/4 OF SECTION 26, T14N, R11E OF THE 8TH P.M., SARY COUNTY, NEBRASKA.

FILED SARY COUNTY, NEBRASKA
INSTRUMENT NUMBER
2013-04561
02/19/2013 09:35:10 AM
Prof. J. P. Doolittle
REGISTER OF DEEDS

COUNTER: 100
FEE: 34.00
ON: 10/10/12
REFUND: 0.00
CREDIT: 0.00

SWIN INVESTMENTS NO. 1
SWIN INVESTMENTS NO. 2
SWIN INVESTMENTS NO. 3
SWIN INVESTMENTS NO. 4
SWIN INVESTMENTS NO. 5
SWIN INVESTMENTS NO. 6
SWIN INVESTMENTS NO. 7

SWIN INVESTMENTS NO. 8
SWIN INVESTMENTS NO. 9
SWIN INVESTMENTS NO. 10
SWIN INVESTMENTS NO. 11
SWIN INVESTMENTS NO. 12
SWIN INVESTMENTS NO. 13
SWIN INVESTMENTS NO. 14
SWIN INVESTMENTS NO. 15
SWIN INVESTMENTS NO. 16
SWIN INVESTMENTS NO. 17
SWIN INVESTMENTS NO. 18
SWIN INVESTMENTS NO. 19
SWIN INVESTMENTS NO. 20

SURVEYOR'S CERTIFICATE
I, THE UNDERSIGNED, SURVEYOR OF THE SUBDIVISION DESCRIBED HEREIN, HAVE BEEN PROVIDED WITH ALL NECESSARY INFORMATION AND THAT PERMANENT MARKERS HAVE BEEN PLACED AT ALL CORNERS OF SAID BOUNDARY AND AT ALL LOT CORNERS WITHIN SAID SUBDIVISION. I HAVE RECONCILED THE SURVEY WITH THE ORIGINAL PLAT AND THE RECORDS OF THE PUBLIC RECORDS OF THE COUNTY OF SARY, NEBRASKA, AND I HEREBY CERTIFY THAT THE PLAT IS A TRUE AND CORRECT REPRESENTATION OF THE SURVEY. THE PLAT IS BEING FILED FOR RECORD IN THE PUBLIC RECORDS OF THE COUNTY OF SARY, NEBRASKA, AND I HEREBY CERTIFY THAT THE PLAT IS A TRUE AND CORRECT REPRESENTATION OF THE SURVEY. THE PLAT IS BEING FILED FOR RECORD IN THE PUBLIC RECORDS OF THE COUNTY OF SARY, NEBRASKA, AND I HEREBY CERTIFY THAT THE PLAT IS A TRUE AND CORRECT REPRESENTATION OF THE SURVEY.

NOTES
1. DIMENSIONS IN PARENTHESIS PERTAIN TO EASEMENTS.
2. ANGLES SHOWN ADJACENT TO CURVES ARE MEASURED TO THE CHORD LINE.

SARY COUNTY TREASURER'S CERTIFICATE
THIS IS TO CERTIFY THAT I FIND NO REGULAR OR SPECIAL TAXES DUE OR DELINQUENT AGAINST THE PROPERTY DESCRIBED IN THE SURVEYOR'S CERTIFICATE AND EMPLOYED WITHIN THIS PLAT AS SHOWN ON THE RECORDS OF THIS OFFICE THIS 11th DAY OF FEBRUARY, 2013.

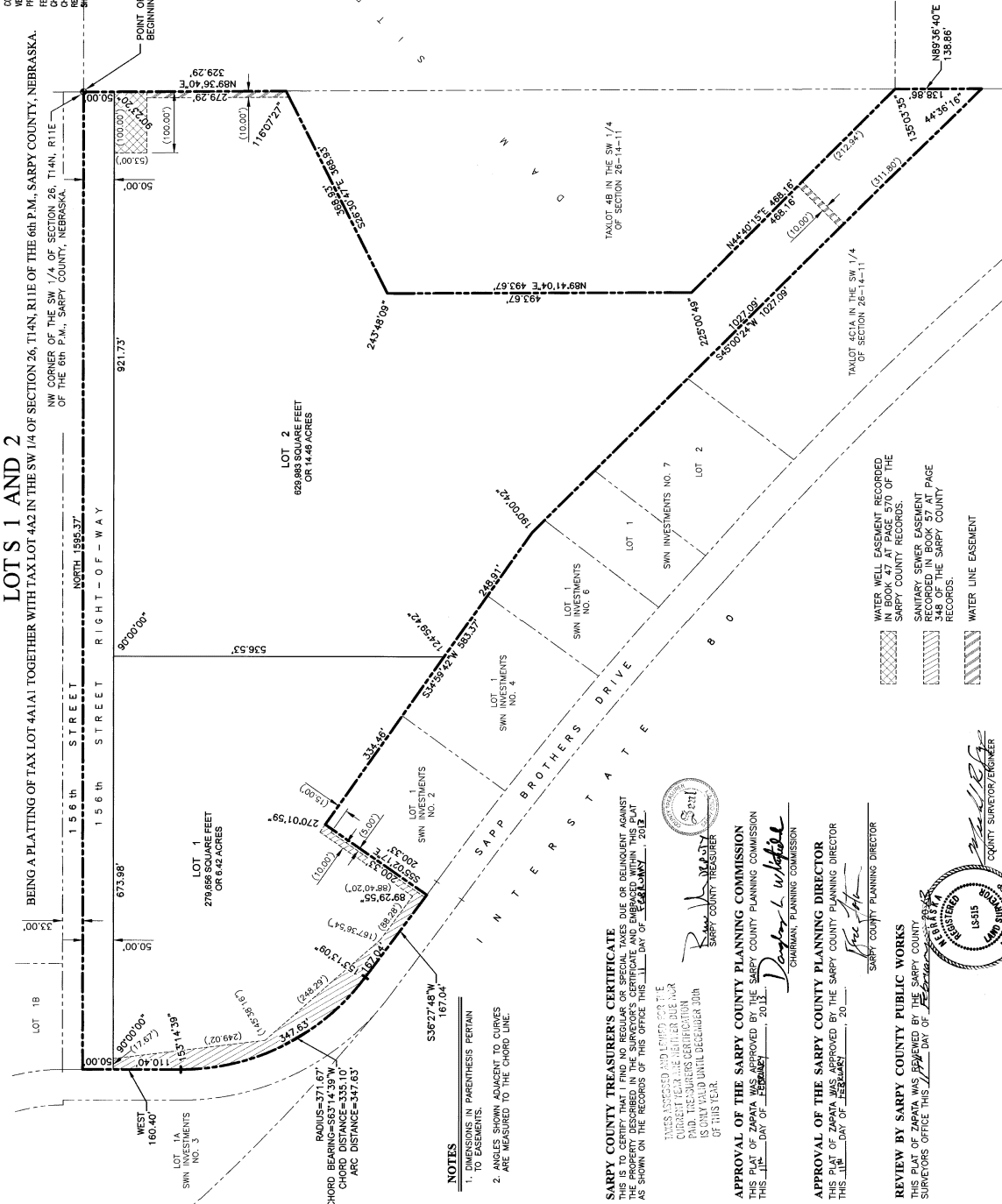
APPROVAL OF THE SARY COUNTY PLANNING COMMISSION
THIS PLAT OF ZAPATA WAS APPROVED BY THE SARY COUNTY PLANNING COMMISSION THIS 11th DAY OF FEBRUARY, 2013.

APPROVAL OF THE SARY COUNTY PUBLIC WORKS
THIS PLAT OF ZAPATA WAS APPROVED BY THE SARY COUNTY PUBLIC WORKS SURVEYORS OFFICE THIS 11th DAY OF FEBRUARY, 2013.

APPROVAL OF THE SARY COUNTY BOARD OF COMMISSIONERS
THIS PLAT OF ZAPATA WAS APPROVED BY THE SARY COUNTY BOARD OF COMMISSIONERS THIS 11th DAY OF FEBRUARY, 2013.

ACKNOWLEDGEMENT OF NOTARY
STATE OF NEBRASKA
I, the undersigned, do hereby certify that I am a Notary Public in and for the State of Nebraska, and that I am duly qualified to perform the duties of a Notary Public in and for the State of Nebraska.

DEDICATION
KNOW ALL MEN BY THESE PRESENTS, THAT WE, SWIN INVESTMENTS, LLC, BEING THE OWNERS OF THE LAND DESCRIBED WITHIN THE SURVEYOR'S CERTIFICATE AND EMPLOYED WITHIN THIS PLAT, DO HEREBY GRANT AND CONVEY TO THE PUBLIC, TO BE HEREINAFTER KNOWN AS ZAPATA, AND WE DO HEREBY RATIFY AND CONFIRM THE SAME. WE HEREBY GRANT A PERPETUAL EASEMENT TO THE OMAHA PUBLIC POWER AND LIGHT COMPANY, TO BE HEREINAFTER KNOWN AS OMAHA PUBLIC POWER AND LIGHT COMPANY, TO INSTALL, MAINTAIN, OPERATE, REPAIR, REPLACE, IMPROVE, ENLARGE, ALTER, MOVE, REMOVE, AND RELOCATE OVERHEAD POWER LINES, CABLES, CONDUITS AND OTHER RELATED SERVICES, AND TO INSTALL UNDERGROUND Wires OF CABLES FOR THE CARRYING AND TRANSMISSION OF ELECTRICITY AND SIGNALS OF ALL KINDS AND THE RECEPTION THEREOF, INCLUDING SIGNALS PROVIDED BY A CABLE TELEVISION SYSTEM AND THEIR RECEPTION, ON, OVER, AND THROUGH THE LAND DESCRIBED WITHIN THIS PLAT, AND A STRIP OF LAND ABUTTING THE REAR LOT LINES, NO PERMANENT BUILDINGS, TREES, RETAINING WALLS, DRIVEWAYS AND OTHER PURPOSES THAT DO NOT THEN OR LATER INTERFERE WITH THE AFORESAID USES OR RIGHTS HEREBY GRANTED.



TDE2
engineering & surveying
Hanson, Creasler & Gerner, Inc.
Omaha, NE 68154
P: 402.330.0860 F: 402.330.8666
www.tde2.com

ZAPATA
LOTS 1 AND 2



Revision	Date	Description	MAR-DDY
1			
2			
3			
4			
5			

U&A No. 14488-162-1A
Drawn By: RJR
Reviewed By: DHN
Date: NOVEMBER 12, 2012
Book:
Page:

SWIN INVESTMENTS, LLC.
BY: [Signature]
LEE SAPP, MANAGING MEMBER

SWIN INVESTMENTS, LLC.
BY: [Signature]
LEE SAPP, MANAGING MEMBER

APPROVAL OF THE SARY COUNTY BOARD OF COMMISSIONERS
THIS PLAT OF ZAPATA WAS APPROVED BY THE SARY COUNTY BOARD OF COMMISSIONERS THIS 11th DAY OF FEBRUARY, 2013.

APPROVAL OF THE SARY COUNTY BOARD OF COMMISSIONERS
THIS PLAT OF ZAPATA WAS APPROVED BY THE SARY COUNTY BOARD OF COMMISSIONERS THIS 11th DAY OF FEBRUARY, 2013.

APPROVAL OF THE SARY COUNTY BOARD OF COMMISSIONERS
THIS PLAT OF ZAPATA WAS APPROVED BY THE SARY COUNTY BOARD OF COMMISSIONERS THIS 11th DAY OF FEBRUARY, 2013.

APPROVAL OF THE SARY COUNTY BOARD OF COMMISSIONERS
THIS PLAT OF ZAPATA WAS APPROVED BY THE SARY COUNTY BOARD OF COMMISSIONERS THIS 11th DAY OF FEBRUARY, 2013.

APPROVAL OF THE SARY COUNTY BOARD OF COMMISSIONERS
THIS PLAT OF ZAPATA WAS APPROVED BY THE SARY COUNTY BOARD OF COMMISSIONERS THIS 11th DAY OF FEBRUARY, 2013.

APPROVAL OF THE SARY COUNTY BOARD OF COMMISSIONERS
THIS PLAT OF ZAPATA WAS APPROVED BY THE SARY COUNTY BOARD OF COMMISSIONERS THIS 11th DAY OF FEBRUARY, 2013.

APPROVAL OF THE SARY COUNTY BOARD OF COMMISSIONERS
THIS PLAT OF ZAPATA WAS APPROVED BY THE SARY COUNTY BOARD OF COMMISSIONERS THIS 11th DAY OF FEBRUARY, 2013.

APPROVAL OF THE SARY COUNTY BOARD OF COMMISSIONERS
THIS PLAT OF ZAPATA WAS APPROVED BY THE SARY COUNTY BOARD OF COMMISSIONERS THIS 11th DAY OF FEBRUARY, 2013.

SARY COUNTY PLANNING COMMISSION
CHAIRMAN, PLANNING COMMISSION
[Signature]

SARY COUNTY PLANNING DIRECTOR
[Signature]

SARY COUNTY PUBLIC WORKS SURVEYORS OFFICE
[Signature]

SARY COUNTY BOARD OF COMMISSIONERS
CHAIRMAN, SARY COUNTY BOARD OF COMMISSIONERS
[Signature]

COUNTY CLERK
[Signature]

SEAL

2013-04561