

FILED SARPY CO. NE.
INSTRUMENT NUMBER
2006-03062

2006 JAN 31 A 8:23 AM

Lloyd J. Dowding

REGISTER OF DEEDS

COUNTER P C.E. AR
VERIFY W M D.E. AR
PROOF _____
FEES \$ 10.50
CHECK# _____
CHG _____ CASH 20.00
REFUND 9.50CA CREDIT _____
SMART _____ NFR _____



**THIS PAGE ADDED
FOR RECORDING
INFORMATION.**

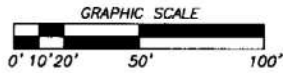
**DOCUMENT STARTS ON
NEXT PAGE.**

LLOYD J. DOWDING

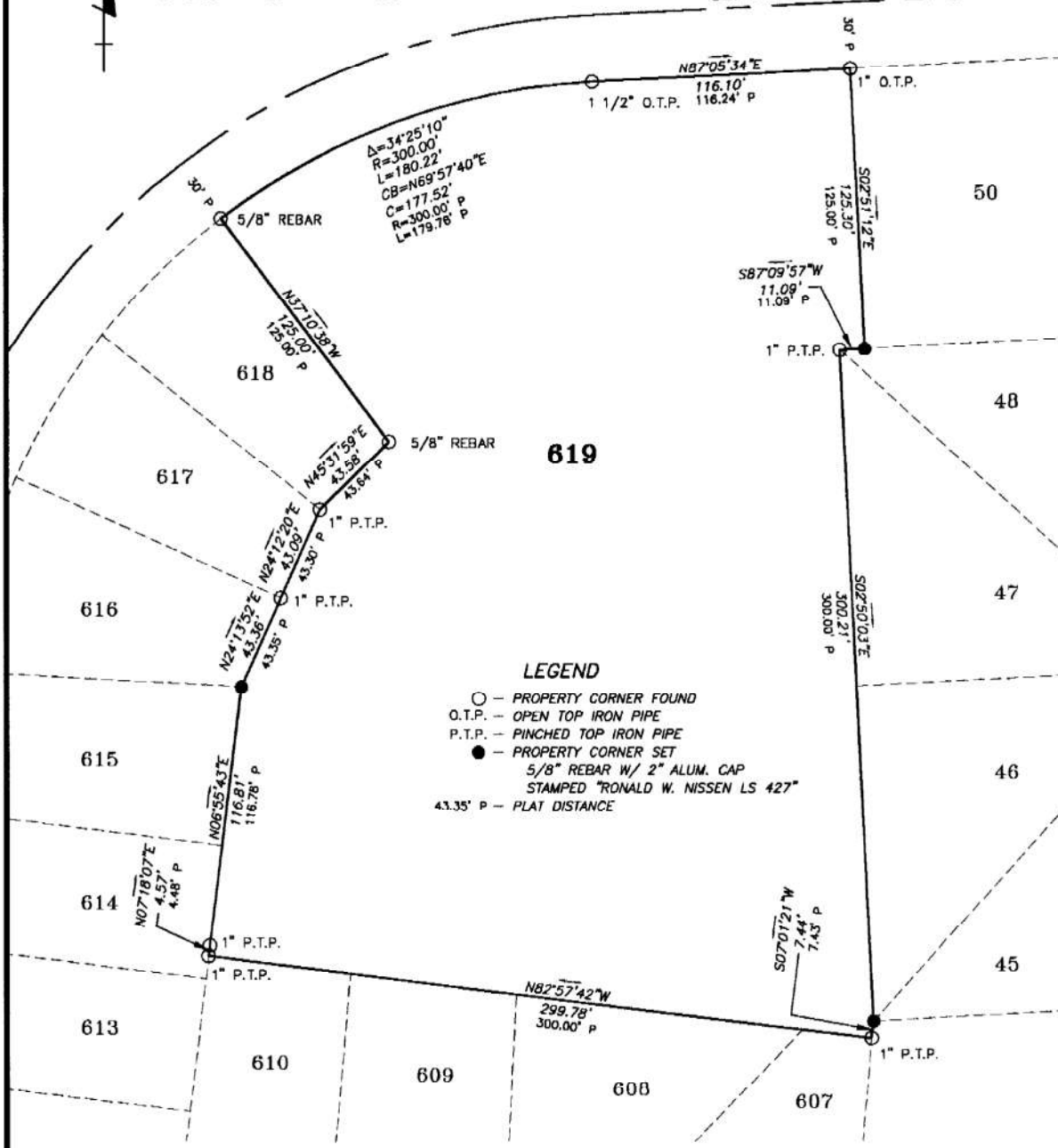
SARPY COUNTY REGISTER OF DEEDS
1210 GOLDEN GATE DRIVE, STE 1109
PAPILLION, NE 68046-2895
402-593-5773

*R+R
HWS Consulting
Group
10844 Old Mill Rd
Ste 1
Omaha, NE 68154*

LAND SURVEY RECORD, LOT 619, PARK VIEW HEIGHTS REPLAT III, CITY OF LAVISTA, SARPY COUNTY, NEBRASKA



CENTERLINE OF PARK VIEW ROAD



LEGEND

- — PROPERTY CORNER FOUND
- O.T.P. — OPEN TOP IRON PIPE
- P.T.P. — PINCHED TOP IRON PIPE
- — PROPERTY CORNER SET
- 5/8" REBAR W/ 2" ALUM. CAP
STAMPED "RONALD W. NISSEN LS 427"
- 43.35' P — PLAT DISTANCE

I, RONALD W. NISSEN, A PROFESSIONAL REGISTERED LAND SURVEYOR UNDER THE LAWS OF THE STATE OF NEBRASKA, CERTIFY THAT THE SURVEY REPRESENTED ON THIS LAND SURVEY RECORD WAS PERFORMED BY ME OR UNDER MY DIRECT SUPERVISION AND COMPLETED ON NOVEMBER 11TH, 2005. THE MONUMENTS AND DISTANCES SHOWN ARE CORRECT TO THE BEST OF MY KNOWLEDGE AND BELIEF. PERMANENT MONUMENTS WERE FOUND OR ESTABLISHED AS DESCRIBED ON THIS SURVEY RECORD. ALL DISTANCES SHOWN ARE REPRESENTED IN FEET AND DECIMALS OF A FOOT.



03062

F:\SURVEY\361132\BOUNDARY\DWG\LOT619.DWG

JUDSON BAPTIST CHURCH OF LAVISTA
8609 PARKVIEW BLVD. LAVISTA, NEBRASKA



OMAHA OFFICE
 10044 OLD MILL ROAD, SUITE 1
 OMAHA, NE 68154-2051
 (402) 333-5782
 www.hws.com

DATE: NOV. 2005
 JOB NO.: 55-36-1132

SHEET NO. 1/1