

DEED 2008076489
 AUG 04 2008 08:36 P 6

49-38822 NEW
 DEED 3230 FB 49-38780-01d
 U/LG C/O COMP. 6w
 DEL SCAN FV

TOWER PLAZA REPLAT 9

LOT 1

BEING A REPLATTING OF PART OF LOT 1, ALL OF LOTS 5, 6 AND 7, BLOCK 1, TOWER PLAZA, A SUBDIVISION IN DOUGLAS COUNTY, NEBRASKA, TOGETHER WITH PART OF THE EASTERLY 15.00 FEET OF 80th STREET ADJACENT TO SAID LOTS 5, 6 AND 7.

Received - DIANE L. BATTIATO
 Register of Deeds, Douglas County, NE
 8/4/2008 08:36:20.58
 2008076489

SURVEYOR'S CERTIFICATE

I HEREBY CERTIFY THAT A BOUNDARY SURVEY WAS MADE UNDER MY DIRECT SUPERVISION FOR THE SUBDIVISION DESCRIBED HEREIN AND THAT PERMANENT MARKERS HAVE BEEN FOUND OR SET AT ALL CORNERS OF SAID BOUNDARY AND AT ALL LOT CORNERS AND ANGLE POINTS WITHIN SAID SUBDIVISION TO BE KNOWN AS TOWER PLAZA REPLAT 9, LOT 1, BEING A REPLATTING OF PART OF LOT 1, ALL OF LOTS 5, 6 AND 7, BLOCK 1, TOWER PLAZA, A SUBDIVISION IN DOUGLAS COUNTY, NEBRASKA, TOGETHER WITH PART OF THE EASTERLY 15.00 FEET OF 80TH STREET ADJACENT TO SAID LOTS 5, 6 AND 7, ALL MORE PARTICULARLY DESCRIBED AS FOLLOWS, BEGINNING AT THE SW CORNER OF SAID LOT 7;

THENCE N27°37'47"E (ASSUMING THE SOUTH LINE OF SAID LOT 1 TO BEAR EAST AND WEST) 7.00 FEET ON THE WEST LINE OF SAID LOT 7;
 THENCE N62°36'30"W 15.00 FEET;
 THENCE N27°37'47"E 264.79 FEET ON A LINE 15.00 FEET WEST OF AND PARALLEL WITH THE WEST LINES OF SAID LOTS 5, 6 AND 7 TO A POINT ON THE WESTERLY EXTENSION OF THE NORTH LINE OF SAID LOT 5;
 THENCE S62°31'33"E 145.34 FEET ON THE NORTH LINE OF SAID LOT 5 AND ON THE SOUTH LINE OF DAVENPORT STREET;
 THENCE S85°55'26"E 414.90 FEET (RECORD) 414.20 FEET (MEASURED) ON THE SOUTH LINE OF DAVENPORT STREET;
 THENCE S24°57'27"E 201.00 FEET (RECORD) 199.99 FEET MEASURED TO THE SOUTH LINE OF SAID LOT 1;
 THENCE WEST 682.40 FEET (RECORD) 681.10 FEET (MEASURED) ON THE SOUTH LINES OF SAID LOTS 1 AND 7 TO AN ANGLE POINT ON THE SOUTH LINE OF SAID LOT 7;
 THENCE N62°36'30"W 65.45 FEET ON THE SOUTH LINE OF SAID LOT 7 TO THE POINT OF BEGINNING.

JANUARY 25, 2007
 DATE:

APPROVAL OF OMAHA CITY COUNCIL

THIS PLAT OF TOWER PLAZA REPLAT 9 WAS APPROVED AND ACCEPTED BY THE OMAHA CITY COUNCIL THIS 22 DAY OF APRIL, 2007.

Miss Jolley
 MAYOR

Don Ahlstrom
 PRESIDENT



JAMES D. WARNER,
 NEBRASKA RLS 308

DEPUTY

APPROVAL OF CITY ENGINEER

I HEREBY APPROVE THIS PLAT OF TOWER PLAZA REPLAT 9 ON THIS 22 DAY OF APRIL, 2007.

Charles K. Bunger
 CITY ENGINEER

I HEREBY CERTIFY THAT ADEQUATE PROVISIONS HAVE BEEN MADE FOR COMPLIANCE WITH CHAPTER 53 OF THE OMAHA MUNICIPAL CODE.

AUGUST 15, 2008
 DATE:

Charles K. Bunger
 CITY ENGINEER

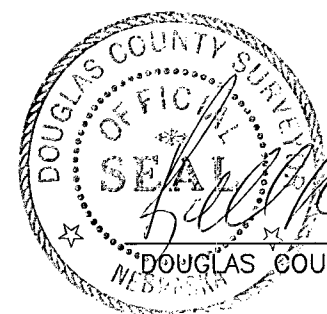
APPROVAL OF OMAHA CITY PLANNING BOARD

THIS PLAT OF TOWER PLAZA REPLAT 9 WAS APPROVED BY THE OMAHA CITY PLANNING BOARD THIS 7th DAY OF March, 2007.

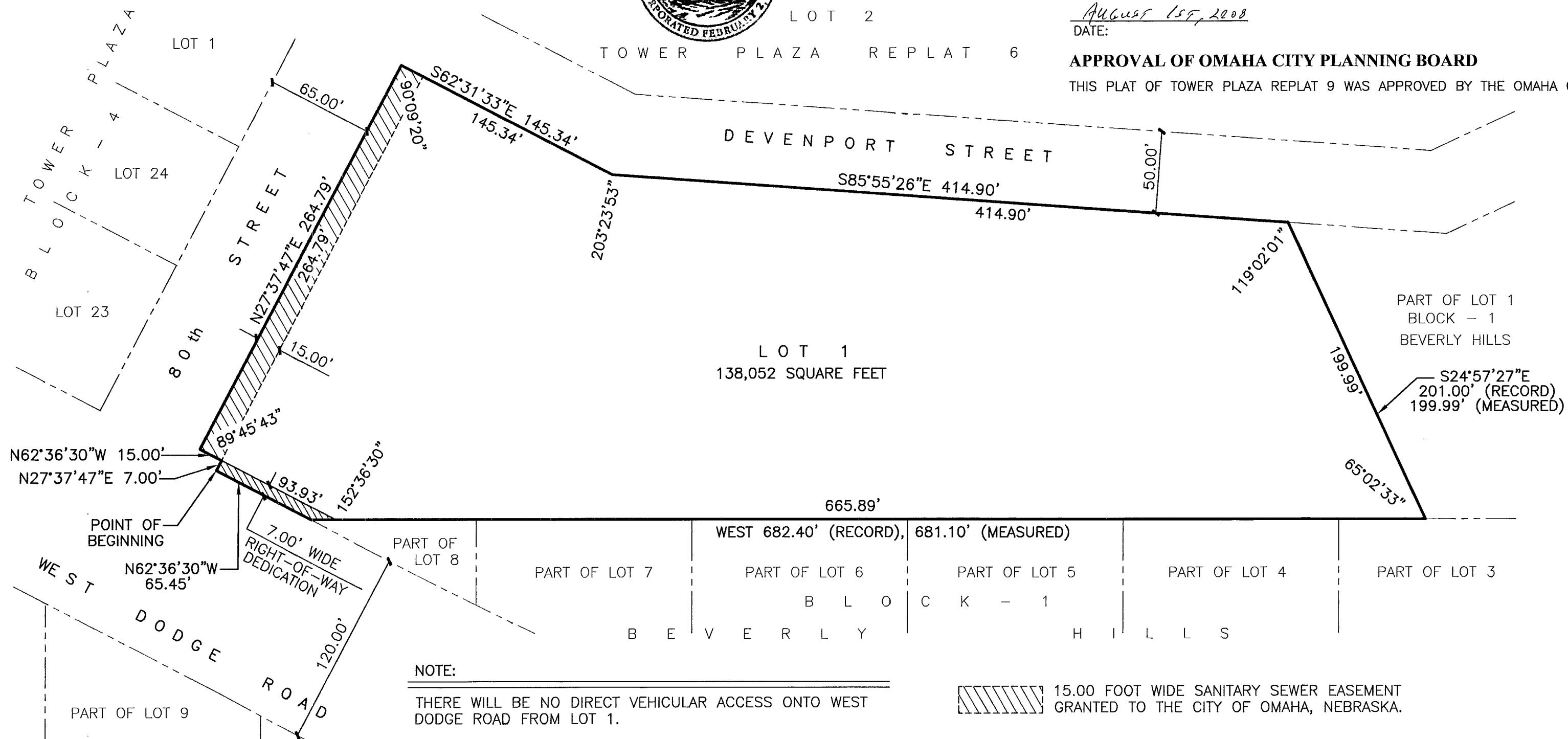
John J. ...
 CHAIRMAN

REVIEW BY DOUGLAS COUNTY ENGINEER
 THIS PLAT OF TOWER PLAZA REPLAT 9 WAS REVIEWED BY THE DOUGLAS COUNTY ENGINEER'S OFFICE.

2/9/2007
 DATE:

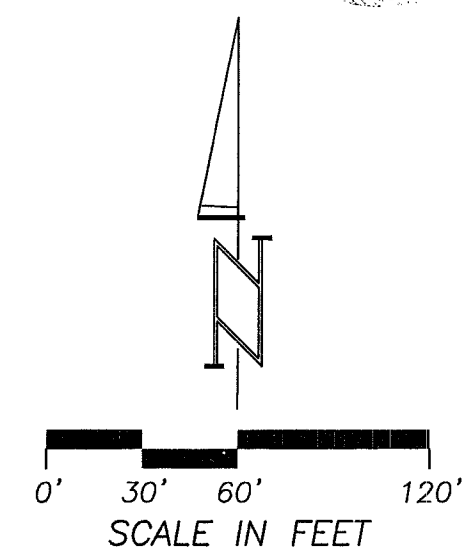


Bill Jolley
 DOUGLAS COUNTY ENGINEER



NOTE:
 THERE WILL BE NO DIRECT VEHICULAR ACCESS ONTO WEST DODGE ROAD FROM LOT 1.

15.00 FOOT WIDE SANITARY SEWER EASEMENT GRANTED TO THE CITY OF OMAHA, NEBRASKA.



SCALE:	1" = 60'
DATE:	FEB. 7, 2007
DRAWN BY:	RJR
CHECKED BY:	JDW
REVISION:	

TOWER PLAZA REPLAT 9
 FINAL PLAT

2 THOMPSON, DRESSEN & DORNER, INC.
 Consulting Engineers & Land Surveyors
 10836 OLD MILL ROAD OMAHA, NEBRASKA 68164
 PHONE: 402.330.8860 FAX: 402.330.5866 EMAIL: TD2MAIL@TD2CO.COM
 WEBSITE: WWW.TD2CO.COM

748-256-1
 A7482561A.DWG