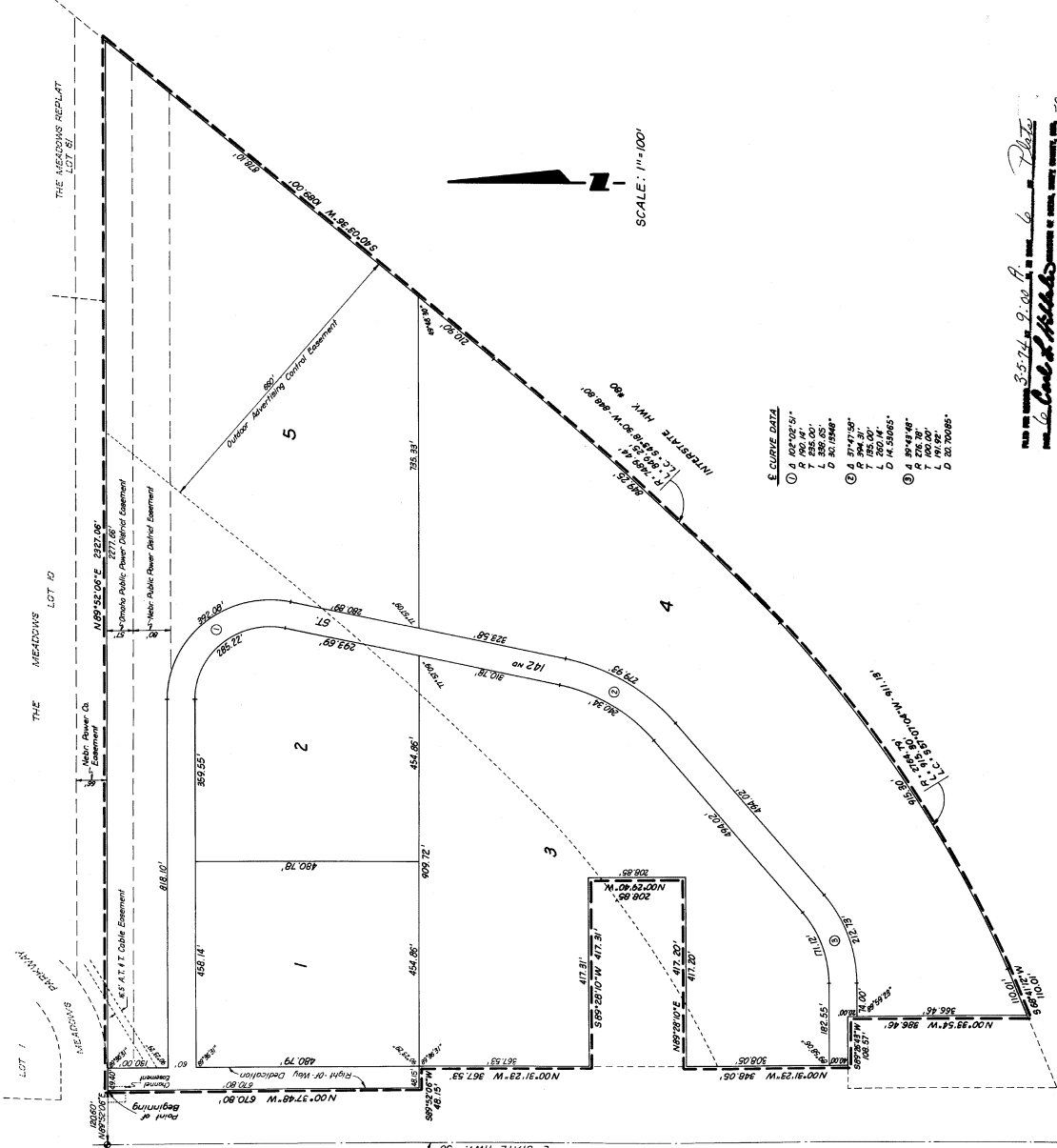


# THE MEADOWS II

A PART OF TAX LOTS 14 & 12, LOCATED IN THE SW 1/4  
OF SEC. 24, T14N, R11E OF THE 6TH PM.,  
SARPY COUNTY, NEBR.



## DRAWER'S CERTIFICATE

I hereby certify that I have surveyed the property shown on this plat and that the same is in accordance with the laws of Nebraska and that I, the surveyor, have not been guilty of any negligence or fraud in the execution of my duty and that I have complied with the provisions of the laws of Nebraska in all particulars as required by law.

Commissioner at the bottom center of said Sec 24, Town 14 North, Range 11 East, 6th Principal Meridian, Sarpy County, Nebraska. (Seal and signature of Surveyor)

Surveyor  
2-14-74

Witness my hand and seal at Omaha, Nebraska, this 24th day of February, 1974.

Surveyor

Witness my hand and seal at Omaha, Nebraska, this 24th day of February, 1974.

Surveyor

Witness my hand and seal at Omaha, Nebraska, this 24th day of February, 1974.

Surveyor

Witness my hand and seal at Omaha, Nebraska, this 24th day of February, 1974.

Surveyor

Witness my hand and seal at Omaha, Nebraska, this 24th day of February, 1974.

Surveyor

Witness my hand and seal at Omaha, Nebraska, this 24th day of February, 1974.

Surveyor

Witness my hand and seal at Omaha, Nebraska, this 24th day of February, 1974.

Surveyor

Witness my hand and seal at Omaha, Nebraska, this 24th day of February, 1974.

Surveyor

Witness my hand and seal at Omaha, Nebraska, this 24th day of February, 1974.

Surveyor

#7249

Elliott & Black

180 WEST CENTER ROAD  
OMAHA, NEBRASKA 68102

PLAT NO. 034572

3.50