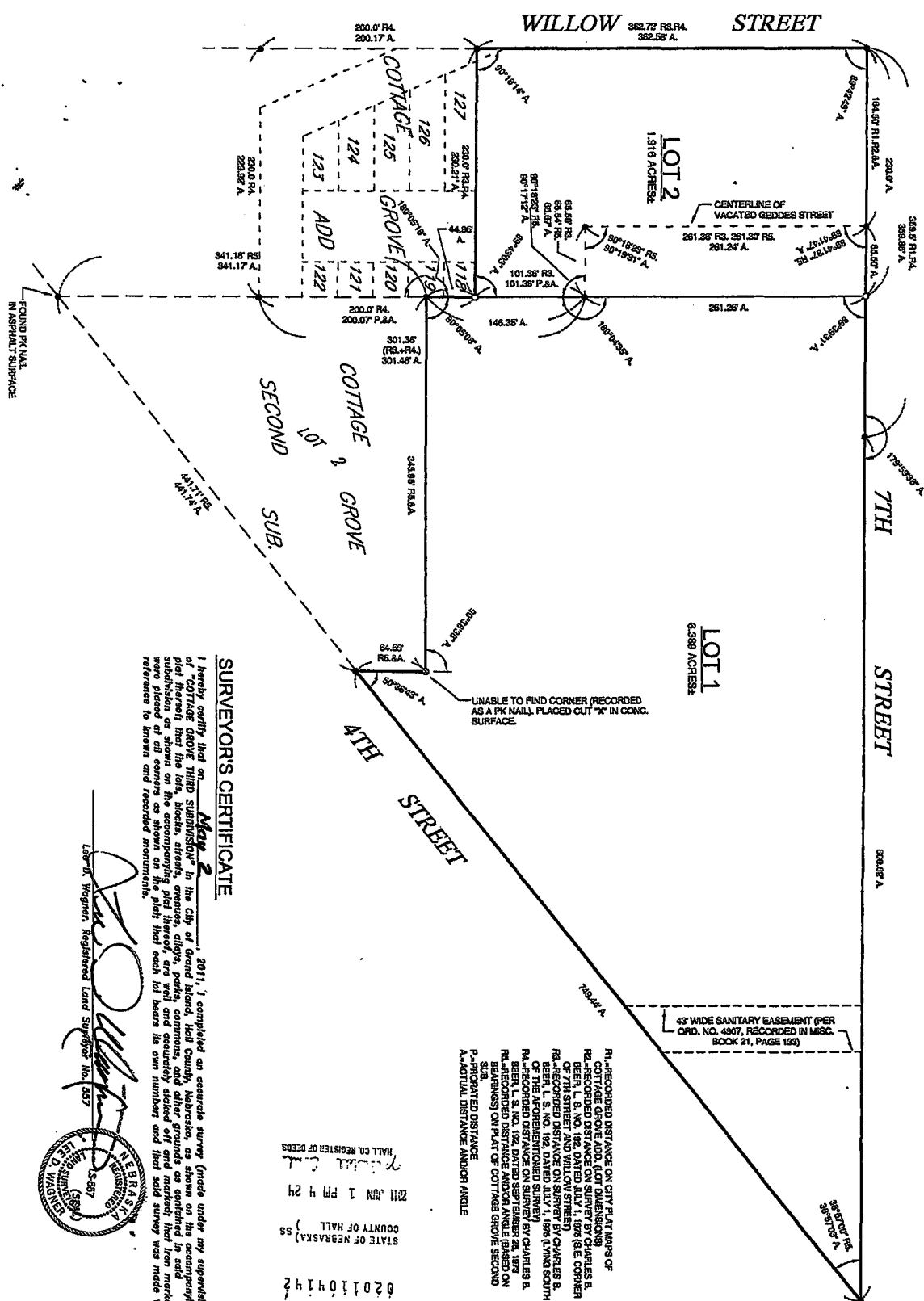


• INDICATES 1/2" IRON PIPE FOUND UNLESS NOTED OTHERWISE.  
• INDICATES 1/2" IRON PIPE WITH CAP PLACED CAP IS STRIPPED 1.5' DEEP.

SCALE 1"=60'



SURVEYOR'S CERTIFICATE

I hereby certify that on May 2, 2011, I completed an accurate survey (made under my supervision) of "COTTAGE GROVE THIRD SUBDIVISION" in the City of Grand Island, Hall County, Nebraska, as shown on the accompanying plat hereto, that the lots, blocks, streets, avenues, alleys, paths, commons, and other grounds as contained in said subdivision as shown on the accompanying plat hereto, are well and accurately staked off and marked that iron markers are placed in the corners as shown on the plat that each lot bears its own number and that said survey was made with reference to known and recorded monuments.

Lawrence D. Wiegman, Registered Land Surveyor No. 257  
NEBRASKA  
HALL COUNTY  
JUL 1 2011  
WIEGMAN

ENTERED AS INSTRUMENT NO. 6201104142  
COUNTY OF HALL  
JUL 1 PM 4 29  
HALL CO. REGISTER OF DEEDS

COTTAGE GROVE THIRD SUBDIVISION

IN THE CITY OF GRAND ISLAND, HALL COUNTY, NEBRASKA  
BENJAMIN & ASSOCIATES, INC. - ENGINEERS & SURVEYORS - GRAND ISLAND, NEBRASKA



