

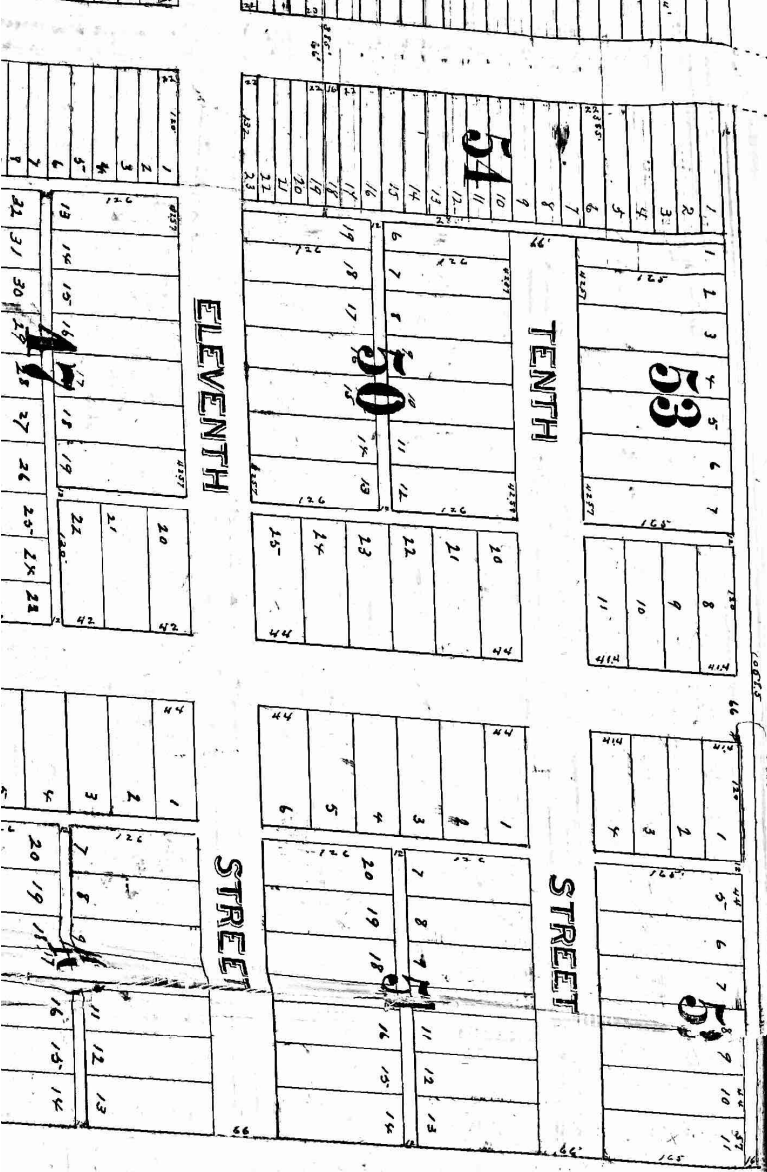
# Joyful AN Addition to A & E



## SOUTH SIOUX CITY, NEBRASKA.

AN Addition to

STATE OF NEBRASKA  
 Published on the  
 day of  
 at  
 and recorded in book  
 of page



I, Jim Lewis Civil Engineer of Sioux City Iowa hereby certify that I have surveyed the plat of the annexed part of Joy Place and adjacent to South Sioux City Nebraska and the same is located upon and comprises the 6th 21/2m (except 1/4m strip) 100 feet wide across the north end of said tract. This strip containing 76.91 acres more or less and that the plat upon the margin of which this is written is an accurate description thereof. The NW corner of lot 1, 2, 4, 9, 10, 11, 12, 13, 14, 15, 16, 17, 18, 19, 20, 21, 22, 23, 24, 25, 26, 27, 28, 29, 30, 31 all lots, streets and wells are of the dimensions marked upon the plat. Oak stakes are driven at all lot corners and stones placed in the ground at points indicated on the plat by the word 'STONE'.

— Jim Lewis —

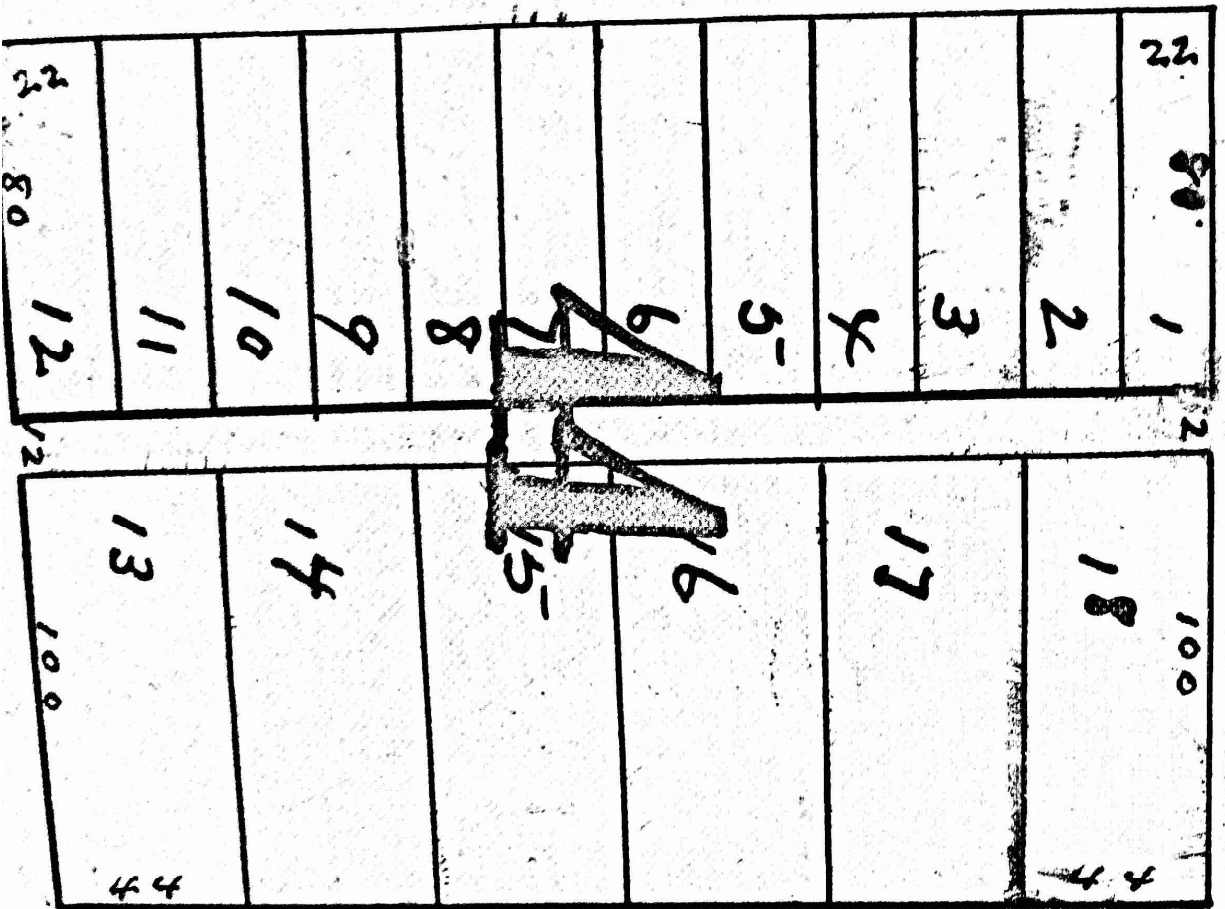
Witness my hand and seal this 1st day of August 1901.



HUSBAND AND WIFE OF M  
 THAT PART OF THE W  
 PM (MORE PARTICULAR  
 ICATE) TO BE SURVEYED  
 AND ALLEYS AS IS A  
 ANNEXED PLAT AND  
 EER WHO SURVEYED,  
 CALLED "JOY PARK"  
 THAT THE SUB-DIVIS  
 PLAT IS WITH OUR F  
 AS SOLE OWNERS  
 IN WITNESS  
 THIS 18 DAY OF

STATE OF Iowa  
 Woodbury County  
 H.D. 1890 Before  
 County, a Joy  
 EUTED THE S  
 TO BE 37TH  
 EXPRESSED.  
 AND RECEIVED  
 ON THE DATE

AVENUE



PARK AVENUE

TWELFTH

Joy Park  
 Private Pa

PLANNING